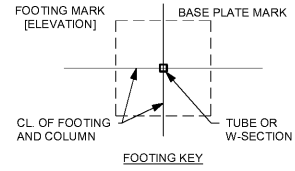
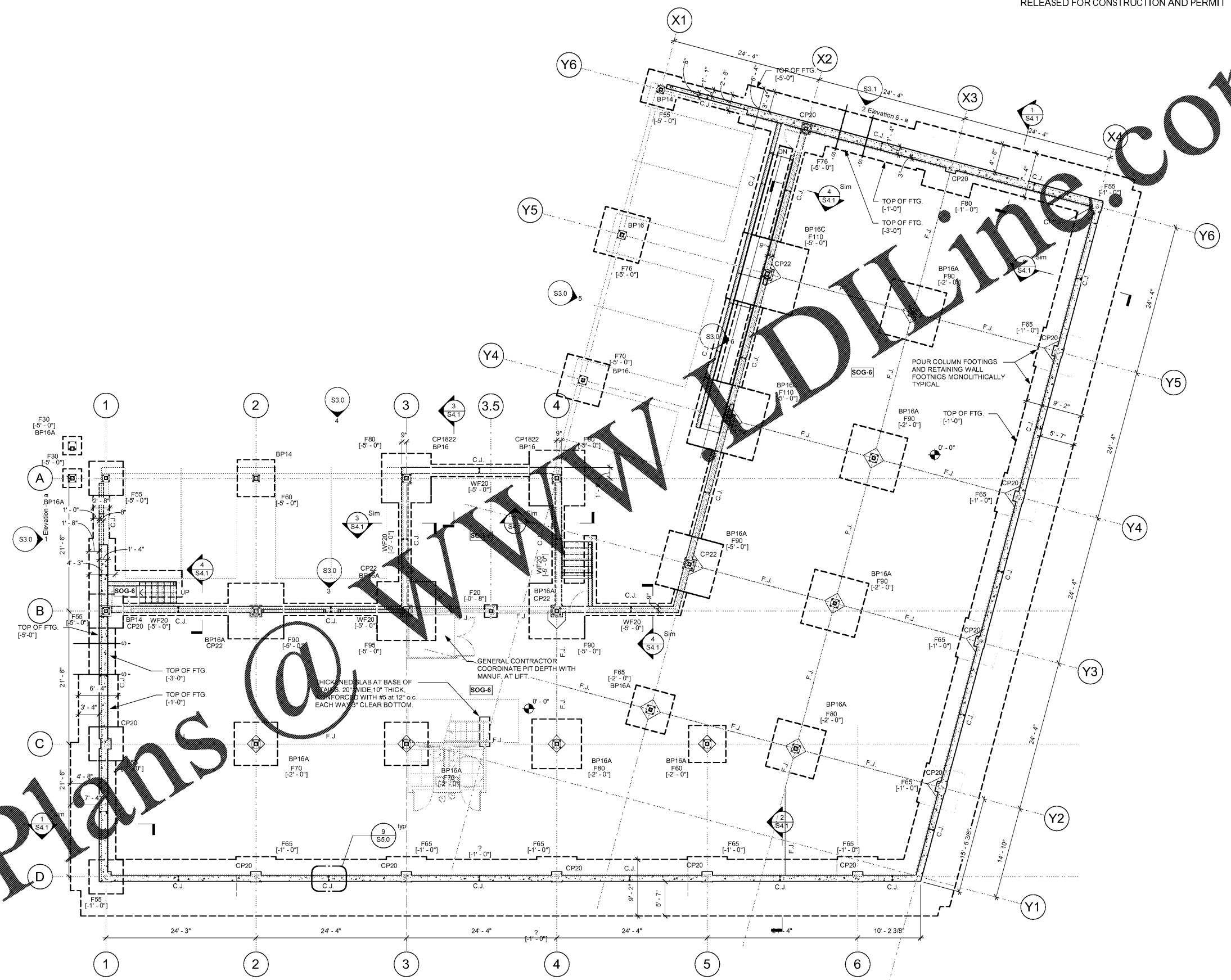


FOUNDATION PLAN NOTES



- ⊗ INDICATES TO SLOPE SLAB. SEE ARCHITECTURAL FOR AMOUNT OF SLOPE AND EXACT LOCATION.
- [0'-0"] INDICATES ELEVATION OF FINISH FLOOR SLAB. SEE CIVIL DRAWINGS FOR DATUM.
- [] NUMBER INSIDE OF BRACKETS INDICATES TOP OF FOOTING ELEVATION.
- 0- INDICATES A STEP IN FOOTING. SEE GENERAL NOTES FOR CRITERIA.
- D.J.: INDICATES A DUMMY JOINT IN THE SLAB ON GRADE. SEE TYPICAL DUMMY JOINT DETAIL.
- F.J.: INDICATES A FLOOR JOINT. USE 24 GAUGE KEYED TYPE. DISCONTINUE MESH AT JOINT. SEE TYPICAL CONTROL JOINT DETAIL AND SPECIFICATIONS.
- C.J.: INDICATES A CONTROL JOINT IN THE SLAB ON GRADE. SEE TYPICAL CONTROL JOINT DETAIL.
- NOTE: CONTRACTOR SHALL COORDINATE EXACT LOCATIONS OF ALL FLOOR JOINTS AND DUMMY JOINTS WITH THE ARCHITECTURAL JOINTS IN FINISHES. ALL FLOOR JOINTS SHOULD COINCIDE DIRECTLY UNDER A JOINT IN THE ARCHITECTURAL FINISH ABOVE. SEE ARCHITECTURAL DRAWINGS.
- NOTE: WHERE ROOF DRAIN PIPES ARE LOCATED OVER A COLUMN OR A WALL FOOTING, DROP TOP OF FOOTING TO [-2'-0"] BELOW FINISH FLOOR SLAB ELEVATION [0'-0"] AND PROVIDE A CONCRETE PIER AT COLUMN.
- NOTE: AT THE BASE OF ALL STAIRS, PROVIDE A THICKENED SLAB 10" THICK & 20" WIDE REINF. WITH 2 #5 CONT.
- NOTE: FOOTINGS HAVE NOT BEEN DROPPED FOR CIVIL PLUMBING OR ELECTRICAL LINES. SEE GENERAL NOTES FOR CRITERIA.
- NOTE: SEE TYPICAL DETAIL AT BASE OF STEEL COLUMNS. WHERE CONCRETE PIERS ARE NOT SPECIFICALLY DETAILED, PROVIDE A PIER AS NOTED ON DETAIL.
- NOTE: UNLESS NOTED OTHERWISE ON PLANS, TOP OF FOOTINGS AT ALL EXTERIOR FOOTINGS SHALL BE [-2'-0"] BELOW FINISH FLOOR SLAB.
- NOTE: UNLESS NOTED OTHERWISE ON PLANS, TOP OF FOOTINGS AT ALL INTERIOR FOOTINGS SHALL BE [0'-8"] BELOW FINISH FLOOR SLAB.
- NOTE: MAXIMUM SPACING OF VERTICAL CONTROL JOINTS IN EXTERIOR MASONRY VENEER IS 16'-0" FROM CORNERS AND 32'-0" FOR INTERMEDIATE VERTICAL JOINTS. SEE ARCHITECT FOR EXACT LOCATIONS.
- NOTE: FOR ISOLATION JOINT AT COLUMN BASES, SEE TYPICAL DETAIL.
- NOTE: FOUNDATION SLAB IS 4" CONCRETE SLAB ON A POLYETHYLENE VAPOR BARRIER (SEE ARCHITECT) ON 4" GRAVEL ON GRADE REINFORCED WITH W.W.F. 6x6-W2.9xW2.9.
- NOTE: MAXIMUM EARTH DIFFERENTIAL WHEN BACKFILLING SHOULD NOT EXCEED 2'-0".
- NOTE: ALL ELEVATIONS SHOWN ARE TOP OF FOOTING ELEVATION.
- NOTE: FOOTINGS UNDER DIAGONAL BRACES SHALL BE THE SCHEDULED THICKNESS, BUT NOT LESS THAN 24" THICK. PROVIDE SCHEDULED BOTTOM STEEL REINFORCEMENT IN EACH DIRECTION 3' CLEAR. IN ADDITION PROVIDE #4 AT 18" o.c. EACH WAY TOP 2' CLEAR.



1 Basement Plan

1/8" = 1'-0"
NOTE: ABOVE MENTIONED WASHER DIMENSIONS ARE MINIMUM.

REVISIONS	NO.	DATE	COMMENTS
	01.15.19		Permit Set

RETAIL DEVELOPMENT
POP'S WINE & SPIRITS
 2-1764 TR A-B MCFARLAND 400 IND PARK
 MCFARLAND PKWY ALPHARETTA GA 30004

Foundation Plan
 PROJ. NO: 201812
 DATE: 01-15-19
 © 2019 ARCHPLAN DESIGN GROUP INC

S2.0

Order Plans @

WWW.ArchPlan.com