

2 EXTERIOR ELEVATION @ REAR
SCALE 1/8" = 1'-0"

EXTERIOR MATERIALS

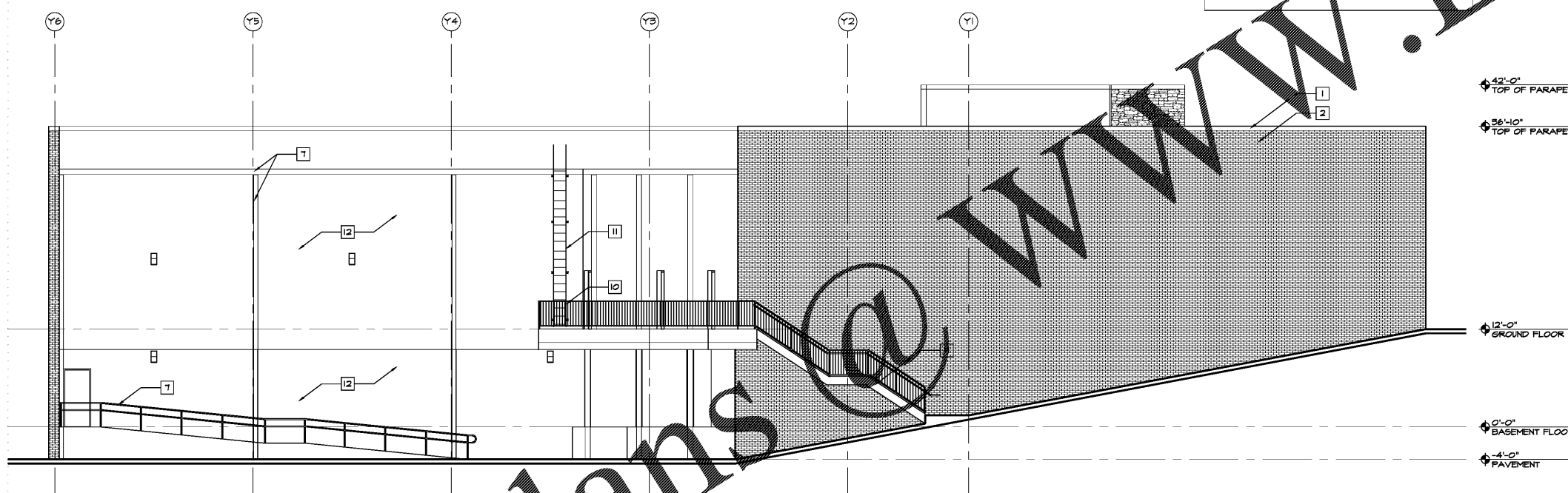
REAR FACADE AREA
TOTAL 2684 SF
STUCCO 2684 SF

EXTERIOR LEGEND

- PRE-FINISHED COPING
- BRICK RUNNING BOND - EARTH TONE COLOR TO BE SELECTED BY OWNER
- PRE-FINISHED COLORED ARCHITECTURAL MASONRY WITH ROUGH-Hewn TEXTURE - EARTH TONE COLOR TO BE SELECTED BY OWNER
- FUTURE LOCATION OF TENANT SIGNAGE - ELECTRICAL FOR JUNCTION BOX LOCATION
- ALUMINUM STOREFRONT SYSTEM
- EXTERIOR LIGHT FIXTURE TO ELECTRICAL
- PRE-FINISHED GUTTER AND DOWN SPOUT
- METAL CANOPY
- CONCRETE METAL PANELS EXPOSED
- METAL SKYLIGHT
- STAIR ACCESS LADDER
- STAIR

EXTERIOR MATERIALS FOR ENTIRE FACADE

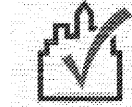
TOTAL 18,524 SF - 100 %
BRICK 10,746 SF - 58.0 %
GLASS 1,815 SF - 9.8 %
STONE 1,028 SF - 4.9 %
STUCCO 5,008 SF - 27.0 %



1 EXTERIOR ELEVATION @ REAR
SCALE 1/8" = 1'-0"

EXTERIOR MATERIALS

REAR FACADE AREA
TOTAL 2,324 SF
STUCCO 2,324 SF



COMcheck Software Version 4.1.1.0
Envelope Compliance Certificate

Section 1: Project Information

Energy Code: 2009 IECC
Project Title: POP'S WINE AND SPIRITS
Project Type: New Construction

Construction Site: 3175A-AV MCFARLAND PARK, ALPHARETTA, GA 30004
Owner/Agent: BOMCHIS SPIRIT POP'S & SODA PARTNERS, LLC, 46 BRUNN LANDING DR, SUITE 202A, SUWANEE, GA 30067, 770-303-0795, bomchisspi@outlook.com
Designer/Contractor: TONY KIM ARCHITECTURAL DESIGN GROUP, INC, 1143 GATE LITE BLVD, SUITE 202A, SUWANEE, GA 30067, 404-641-8119, tonykimarchitect.com

Building Location (for weather data): Suwanee, Georgia
Climate Zone: 3a
Vertical Clipping Method: Avg. Pct.
Building Use, Activity, Type(s): 1-Retail (Retail), Nonresidential

Floor Area: 29483

Section 2: Envelope Assemblies and Requirements Checklist

Envelope Assemblies:

Component Name/Description	Gross Area or Perimeter	Req. R-Value	Actual R-Value	Req. U-Factor	Actual U-Factor
Roof 1: Insulated Single-Axis A-frame Roof, High-Axis Roof Required, (Bldg. Use 1 - Retail)	10552	---	2.0	0.508	0.508
Exterior Wall 1: Brick/Parapet, 12" o.c. (Bldg. Use 1 - Retail)	10709	13.0	13.0	0.139	0.094
Window 1: Metal-Framed, Thermal Break, Fixed, Pier Spaced Product (2) (FG, 30x36x41.5, SH-00-035, (Bldg. Use 1 - Retail)) (4)	4828	---	---	0.100	0.653
Door 1: Glass (70% glazing)/Metal Frame, Entrance Door, Perf. Spaced Product (2) (FG, 30x36x41.5, SH-00-035, (Bldg. Use 1 - Retail)) (4)	183	---	---	0.300	0.909
Door 2: Insulated Metal, Swinging, (Bldg. Use 1 - Retail)	126	---	---	0.700	0.709
Door 3: Insulated Metal, Non-Swinging, (Bldg. Use 1 - Retail)	90	---	---	0.700	1.450
Basement Wall 1: Solid Concrete (12" Thickness, Horizontal Dimple), Furring, Non-Ins. (12.0, Densf. 15.0, (Bldg. Use 1 - Retail))	1889	---	1.9	0.291	0.679

- (A) Budget U-factors are used for systems baseline calculations. U-Factors are not code requirements.
(B) Penetration product performance must be certified in accordance with NFRC and include supporting documentation.
- Air Leakage, Component Certification, and Vapor Retarder Requirements:**
- All doors and penetrations are caulked, gasketed or otherwise sealed to meet the air-leakage requirements (insulated in accordance with the manufacturer's installation instructions).
 - Windows, doors, and roof penetrations are installed in accordance with the manufacturer's installation instructions.
 - Component R-values & U-factors are listed as certified.
 - No gaps in insulation or air-barriers are installed or left with voids between ceiling panels.
 - Other components have supporting documentation for required U-Factors.
 - Penetration installed according to manufacturer's instructions, in substantial conformance with the air-leakage requirements, and in a manner that achieves the rated R-value without compromising the insulation.
 - Shaft, elevator shaft, vents, and other outdoor air intake and exhaust openings in the building envelope are equipped with motorized dampers.
 - Cargo doors and loading dock doors are weather sealed.
 - Recessed lighting fixtures installed in the building envelope are Type IC rated or meeting NFPA 703, and sealed with gasket or gully.
 - Building entrance doors have a vestibule equipped with self-closing devices.
 - Building entrances with revolving doors.
 - Doors not intended to be used as a building entrance.
 - Doors that open directly from a space less than 5000 sq. ft. in area.
 - Doors used primarily to facilitate vehicular movement or materials handling and adjacent personnel doors.
 - Doors opening directly from a sleeping/working unit.

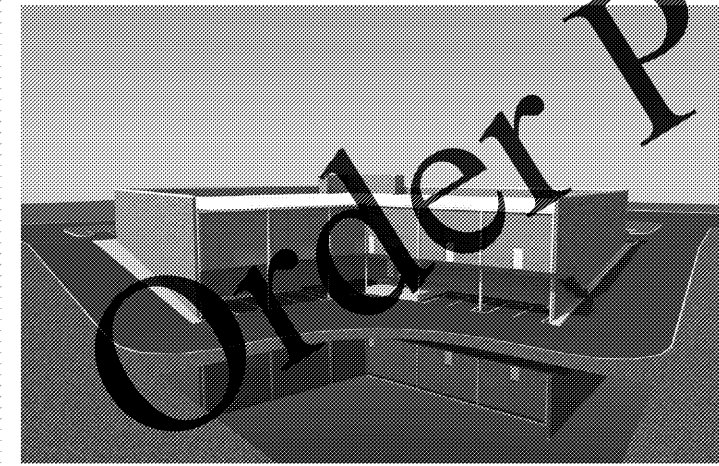
Section 3: Compliance Statement

Compliance Statement: This proposed envelope design represented in this document is consistent with the building plans, specifications and other calculations submitted with this permit application. The proposed envelope systems has been designed to meet the 2009 IECC requirements in COMcheck Version 4.1.1.0 and to comply with the mandatory requirements in the Requirements Checklist.

Tony Kim - Project Architect
Name - Title

[Signature]
Signature

1/20/2019
Date



REAR PERSPECTIVE

REVISIONS

NO.	DATE	DESCRIPTION

RETAIL DEVELOPMENT
POP'S WINE & SPIRITS
2-1764 TR A-B MCFARLAND 400 IND PARK
ALPHARETTA GA 30004

EXTERIOR ELEVATIONS
PROJ. NO: 201834
DATE: 01/20/2019