

**1 EXTERIOR ELEVATION @ MCFARLAND PKWY**  
SCALE 1/8" = 1'-0"

**EXTERIOR MATERIALS**

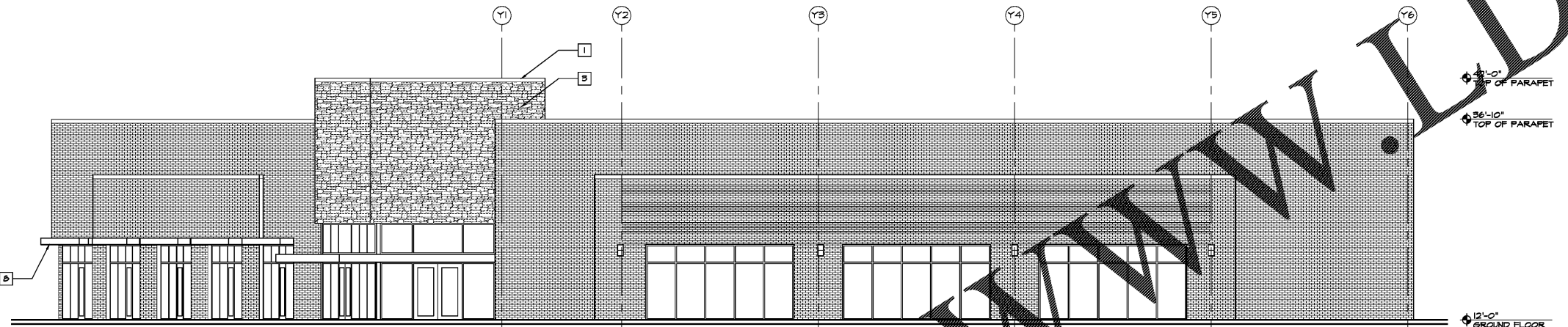
MCFARLAND PKWY FACADE AREA  
TOTAL 4,001 SF  
BRICK 2,282 SF - 57%  
GLASS 1,194 SF - 29%  
STONE 525 SF - 14%

**EXTERIOR LEGEND**

- 1 PRE-FINISHED COPING
- 2 BRICK RUNNING BOND - EARTH TONE COLOR TO BE SELECTED BY OWNER
- 3 PRE-FINISHED COLORED ARCHITECTURAL MASONRY WITH ROUGH-Hewn TEXTURE - EARTH TONE COLOR TO BE SELECTED BY OWNER
- 4 FUTURE LOCATION OF TENANT SIGNAGE - TO BE ELECTRICAL FOR JUNCTION BOX LOCATION
- 5 ALUMINUM STOREFRONT SYSTEM
- 6 EXTERIOR LIGHT FIXTURE TO BE TO ELECTRICAL
- 7 PRE-FINISHED GUTTER AND DOWN SPOUT
- 8 METAL CANOPY
- 9 CONCRETE METAL PAN SKYLIGHT WITH EXPOSED METAL FINISHING
- 10 METAL SKYLIGHT
- 11 STAIR ACCESS LADDER
- 12 STAIR

**EXTERIOR MATERIALS FOR ENTIRE FACADE**

TOTAL 18,524 SF - 100%  
BRICK 10,746 SF - 58.3%  
GLASS 1,815 SF - 9.8%  
STONE 405 SF - 4.9%  
STUCCO 5,028 SF - 27.0%



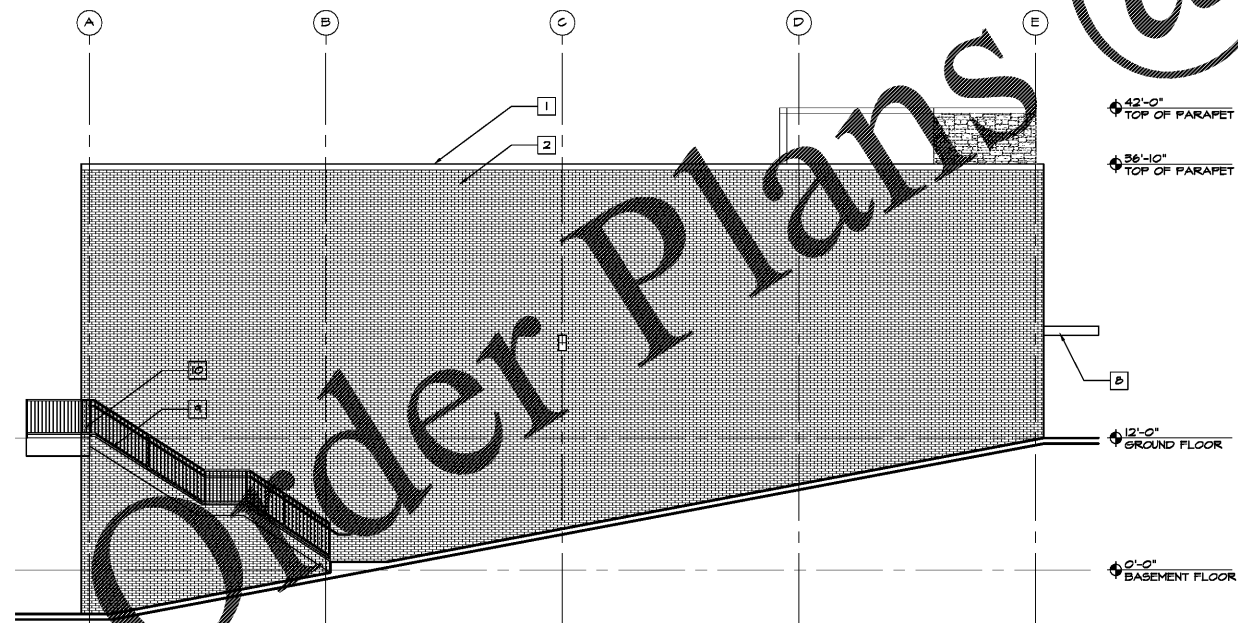
**2 EXTERIOR ELEVATION @ MCFARLAND 400 BLVD**  
SCALE 1/8" = 1'-0"

**EXTERIOR MATERIALS**

MCFARLAND 400 BLVD FACADE AREA  
TOTAL 3,518 SF  
BRICK 2,318 SF - 10%  
GLASS 675 SF - 20%  
STONE 525 SF - 10%



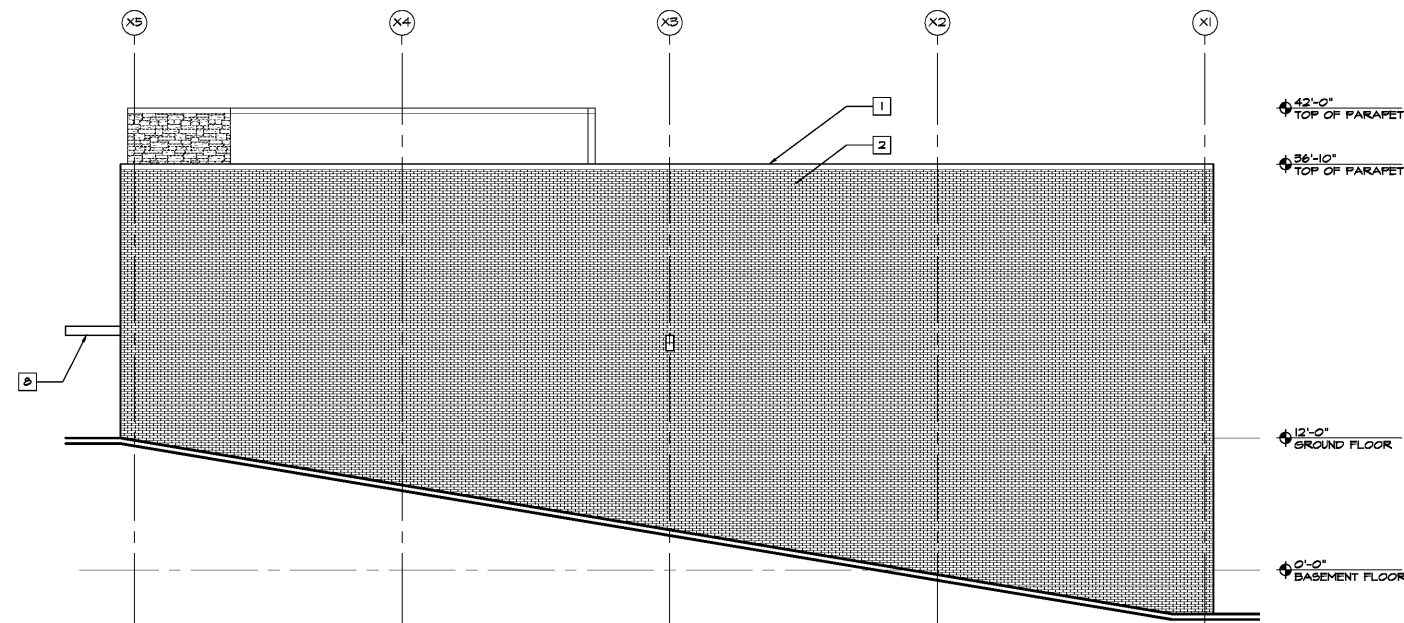
**FRONT PERSPECTIVE**



**3 EXTERIOR ELEVATION @SIDE**  
SCALE 1/8" = 1'-0"

**EXTERIOR MATERIALS**

SIDE FACADE AREA  
TOTAL 2,846 SF  
BRICK 2,846 SF



**4 EXTERIOR ELEVATION @SIDE**  
SCALE 1/8" = 1'-0"

**EXTERIOR MATERIALS**

SIDE FACADE AREA  
TOTAL 3,246 SF  
BRICK 3,246 SF

REVISIONS	NO.	DATE	DESCRIPTION

RETAIL DEVELOPMENT  
**POP'S WINE & SPIRITS**  
2-1764 TR A-B MCFARLAND 400 IND PARK  
ALPHARETTA GA 30004

EXTERIOR ELEVATIONS  
PROJ. NO: 201834  
DATE: 01/20/2019