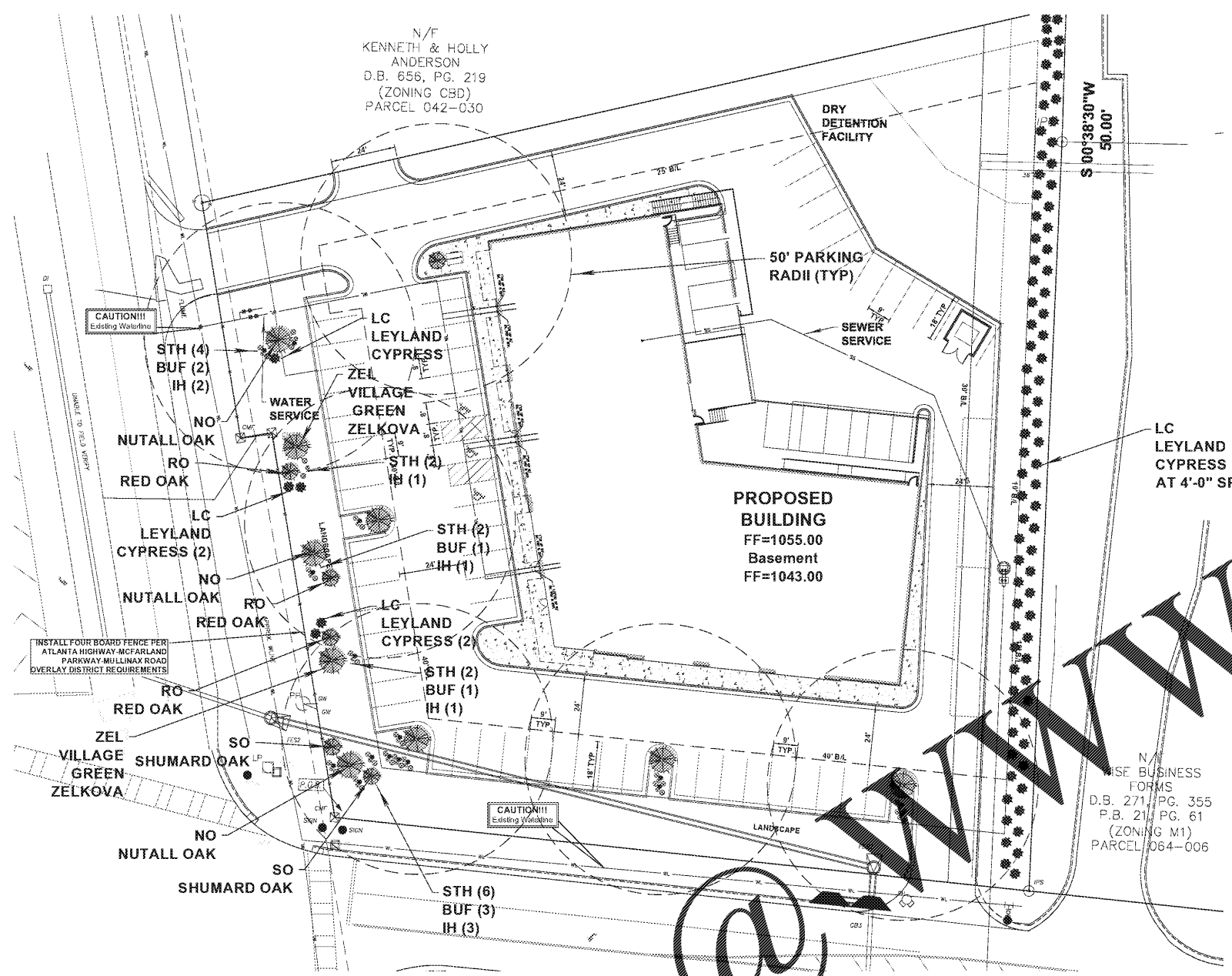
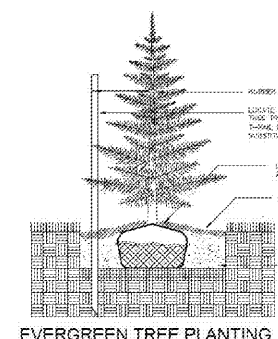
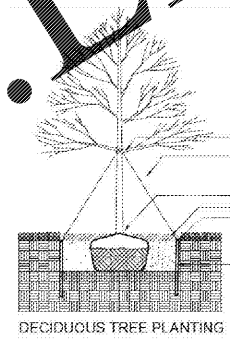
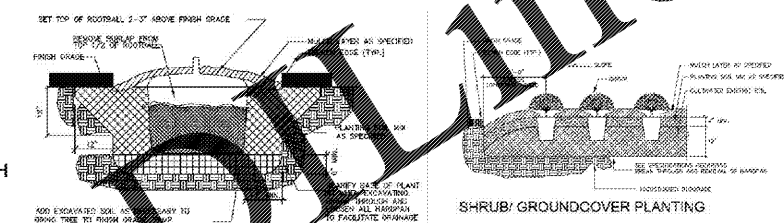
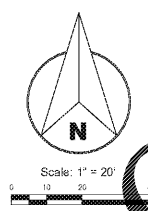


N/F  
KENNETH & HOLLY  
ANDERSON  
D.B. 656, PG. 219  
(ZONING CBD)  
PARCEL 042-030

PROJECT TITLE  
**POPS WINE & SPIRITS**  
FORSYTH COUNTY, GA



- TREE PROTECTION AND REPLACEMENT NOTES:**
- TREE PROTECTION FENCING MUST BE INSTALLED AND INSPECTED PRIOR TO OR CONCURRENT WITH ANY CLEARING, GRUBBING OR GRADING. CALL THE DEPARTMENT OF PLANNING AND DEVELOPMENT FOR AN INSPECTION.
  - TREE PROTECTION SHALL BE ENFORCED ACCORDING TO THE FORSYTH COUNTY TREE PRESERVATION AND REPLACEMENT ORDINANCE.
  - THE DENSITY REQUIREMENTS SHOWN ON THE TREE PROTECTION AND/OR REPLACEMENT PLAN MUST BE VERIFIED PRIOR TO THE ISSUANCE OF THE CERTIFICATE OF OCCUPANCY OR ACCEPTANCE OF THE FINAL PLAT. CALL THE DEPARTMENT OF PLANNING AND DEVELOPMENT FOR AN INSPECTION.
  - WITH THE EXCEPTION OF SINGLE FAMILY RESIDENTIAL DEVELOPMENTS, MAINTENANCE INSPECTION FOR TREES WILL BE PERFORMED AFTER ONE FULL GROWING SEASON FROM THE DATE OF THE FINAL SITE INSPECTION. PROJECT OWNERS AT THE TIME OF THE MAINTENANCE INSPECTION ARE RESPONSIBLE FOR SCHEDULING THIS INSPECTION.
  - ALL PLANT MATERIALS ARE TO CONFORM TO THE AMERICAN STANDARD FOR NURSERY STOCK, LATEST EDITION, AMERICAN ASSOCIATION OF NURSERMEN.
  - IRRIGATION OF ALL REPLACEMENT TREES WILL BE BY THE USE OF "GATOR BAGS".
  - ALL NON BUFFER TREES TO BE PLANTED 1F O.C.



**Table 21.6 PERFORMANCE STANDARDS**

Minimum bare root spacing	25%
Minimum bare root spacing along road right-of-way	33 feet
Minimum bare root spacing within 100 feet of road right-of-way	40 feet
Minimum bare root spacing	25 feet
Minimum bare root spacing	30 feet

Performance standards listed in Table 21.6 require the performance standards contained in USNC chapters 11 and 14 for landscape open space, landscaping and building setbacks.

LANDSCAPE PLAN

**LANDSCAPE NOTES**

- ALL LANDSCAPE PER CHAPTER 21 ARTICLE VI SECTION 21 - 65 OF THE OVERLAY DISTRICTS UNIFIED DEVELOPMENT CODE OF FORSYTH COUNTY, GEORGIA.
- MINIMUM LANDSCAPE SHALL BE A VARIETY OF OVERSTORY TREES AND UNDERSTORY SHRUBS WITH HERBACEOUS MATERIALS.
- ONE OVER STORY TREE AND FOUR SHRUBS PER 40 LF OF LANDSCAPE STRIP ADJACENT TO MCFARLAND PARKWAY.
- MINIMUM 40% EVERGREENS REQUIRED.
- FOUR BOARD FENCE ALONG ROW OF MCFARLAND PARKWAY - MINIMUM 1" THICK, 4" WIDE BOARD AND 4" POSTS EITHER TREATED WOOD, FIBER CEMENT, VINYL OR STEEL - POSTS MAY BE NATURAL STONE OR BRICK MASONRY AND SPACED NO MORE THAN 10' APART.
- 75 LEYLAND CYPRESS TO BE PLANTED IN 10' LANDSCAPE SETBACK ALONG EAST PROPERTY LINE PER ZONING.

**POPS WINE & SPIRITS PLANT LIST**

**TREES WITHIN MCFARLAND PARKWAY LANDSCAPE STRIP**

QTY	KEY	BOTANICAL NAME	COMMON NAME	HGT.	SPD.	ROOT	CHARACTER
3	NO	QUERCUS TEXANA	NUTTALL OAK	18'-20'	8'-10'	3" CAL.	FULL HEAD, STRAIGHT TRUNK
3	RO	QUERCUS RUBRA	RED OAK	18'-20'	8'-10'	3" CAL.	FULL HEAD, STRAIGHT TRUNK
2	SO	QUERCUS SHUMARDII	SHUMARD OAK	18'-20'	8'-10'	3" CAL.	FULL HEAD, STRAIGHT TRUNK
2	ZEL	ZELKOVA SERRATA 'VILLAGE GREEN'	VILLAGE GREEN ZELKOVA	14'-16'	6'-7'	3" CAL.	FULL HEAD, STRAIGHT TRUNK
5	LC	CUPRESSOCYPARIS LEYLANDII	LEYLAND CYPRESS	10'-12'	4'-6'	3" CAL.	FULL TO GROUND, DENSE

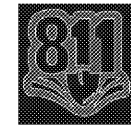
**SHRUBS WITHIN MCFARLAND PARKWAY LANDSCAPE STRIP**

QTY	KEY	BOTANICAL NAME	COMMON NAME	HGT.	SPD.	ROOT	CHARACTER
16	STH	LLEX CRENATA 'SOFT TOUCH'	SOFT TOUCH HOLLY	24"	15"-18"	3 GAL.	DENSE FORM, WELL ROOTED IN POT, GOOD COLOR
7	BUF	LPROLETARIA 'BURGUNDY'	BURGUNDY FRINGEFLOWER	24"	12"-15"	CONT.	DENSE FORM, WELL ROOTED IN POT, GOOD COLOR
8	NO	LLEX GLABRA	INKBERRY HOLLY	36"	15"	3 GAL.	DENSE FORM, WELL ROOTED IN POT, GOOD COLOR

ALL OTHER AREAS TO BE PLANTED SLAB SOD BERMUDA  
PER CHAPTER 21 OVERLAY DISTRICTS, UNIFIED DEVELOPMENT CODE OF FORSYTH COUNTY, GEORGIA  
ARTICLE VI SECTION 21-6.5

**Disclaimer**

THESE PLANS AND DIMENSIONS ARE NOT TO BE CHANGED IN ANY FORM OR MANNER WHATSOEVER WITHOUT FIRST OBTAINING THE EXPRESS WRITTEN PERMISSION AND CONSENT OF REBEL, LLC. ANY CHANGES MADE FROM THESE PLANS WITHOUT CONSENT OF REBEL, LLC ARE UNAUTHORIZED AND SHALL RELIEVE REBEL, LLC OF RESPONSIBILITY FOR ALL CONSEQUENCES ARISING OUT OF SUCH CHANGES.



IF YOU DIG GEORGIA  
CALL US FIRST!  
UTILITIES PROTECTION CENTER  
1-800-282-7411  
(404) 325-5000  
(METRO ATLANTA ONLY)  
**IT'S THE LAW**

**LANDSCAPE DEVELOPMENT**

PROJECT NO.	201902
DATE	01/15/2019

L1.01