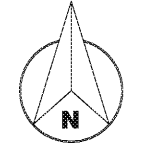
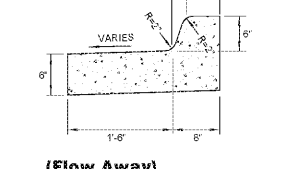
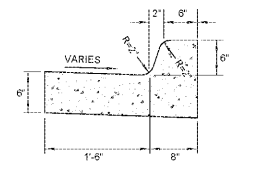
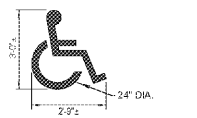
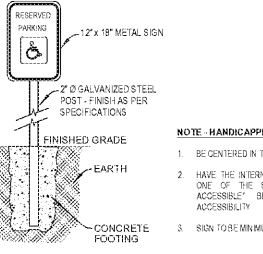
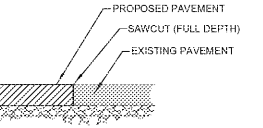
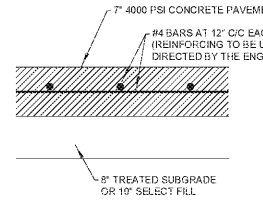
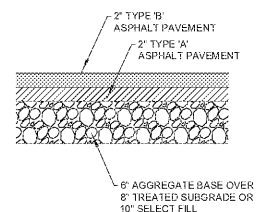
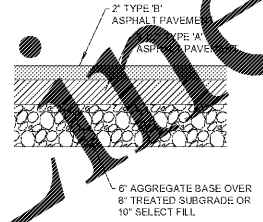


Sheet Legend

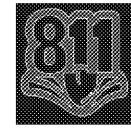
- HEAVY DUTY ASPHALT PAVEMENT (SEE DETAIL 'A' THIS SHEET)
- LIGHT DUTY ASPHALT PAVEMENT (SEE DETAIL 'B' THIS SHEET)
- CONCRETE PAVEMENT SECTION (SEE DETAIL 'C' THIS SHEET)



NOTE - PAVING SECTIONS:
 1. ALL SECTIONS SHOWN ARE TO VERIFY FIELD CONDITIONS. THE OWNER AND GEOTECHNICAL ENGINEER SHALL BE RESPONSIBLE AS REFERENCED ONLY.



- NOTE - HANDICAPPED PARKING SIGNS SHALL:**
- BE CENTERED IN THE ADA SPACE
 - HAVE THE INTERNATIONAL SYMBOL OF ACCESSIBILITY ON THEM. ONE OF THE SIGNS SHALL HAVE THE STATEMENT "WALK ACCESSIBLE" BELOW THE INTERNATIONAL SYMBOL OF ACCESSIBILITY.
 - SIGN TO BE MINIMUM OF 33 INCHES ABOVE SIDEWALK.



IF YOU DIG GEORGIA
 CALL US FIRST!
 UTILITIES PROTECTION CENTER
 1-800-282-7411
 (404) 325-5000
 (METRO ATLANTA ONLY)
IT'S THE LAW

PAVING PLAN

DATE: 2/15/2019	PROJECT NO: 201802
BY: BSR	CHECKED BY: BSR
DATE: 01/15/2019	SCALE: 1" = 20'

Order Plans @ www.LDILine.com

Disclaimer

THESE PLANS AND DRAWINGS ARE NOT TO BE CHANGED IN ANY FORM OR MANNER WHATSOEVER WITHOUT FIRST OBTAINING THE EXPRESS WRITTEN PERMISSION AND CONSENT OF RCELS, LLC. ANY CHANGES MADE FROM THESE PLANS WITHOUT CONSENT OF RCELS, LLC ARE UNAUTHORIZED, AND SHALL RELIEVE RCELS, LLC OF RESPONSIBILITY FOR ALL CONSEQUENCES ARISING OUT OF SUCH CHANGES.