



PROJECT TITLE  
**POPS WINE & SPIRITS**  
FORSYTH COUNTY, GA

EROSION CONTROL LEGEND

CODE	PRACTICE	SYMBOL
CE	CONSTRUCTION EXIT	[Symbol]
SBT-NS	SEDIMENT BARRIER TYPE 'NS'	[Symbol]
SBT	INLET SEDIMENT TRAP	[Symbol]
SB4-C	TEMPORARY SEDIMENT BASIN	[Symbol]
FC-CO	FLOCCULANTS/COAGULANTS	[Symbol]
RF-P	PERFORATED HALF-ROUND PIPE WITH STONE FILTER	[Symbol]
RM	RETAINING WALL	[Symbol]
Sa	SLOPE STABILIZATION	[Symbol]
Tac	TACKIFIER	[Symbol]

EROSION CONTROL LEGEND

CODE	PRACTICE	SYMBOL
WEA-P	CURB INLET PROTECTION - 'PIGS IN A BLANKET'	[Symbol]
DA1	STABILIZATION TEMPORARY SEEDING	[Symbol]
DA2	STABILIZATION PERMANENT VEGETATION	[Symbol]
SI	STORM UPPAN GUTLET PROTECTION	[Symbol]
FR	FILTER RING	[Symbol]

**PHASE 1 - DETENTION / TEMPORARY SEDIMENT BASIN**

Sd 4-10  
DA = 1.82 ACRES  
VOLUME REQUIRED = 1.82 ACRES X 67 CY/ACRE  
= 121.94 CY OR 3,292.38 CF

VOLUME PROVIDED  
 $V = 0.25 \text{ AC/FT} \times 10,890.00 \text{ CF} = \text{PER DETENTION POND}$   
CALCULATIONS SEE SHEET CL4-01  
SPILLWAY ELEVATION = 1031.00  
CLEANOUT VOLUME REQUIRED  
 $V_{\text{req}} = 1/3 \times 10,890.00 \text{ CF} = 3,630.00 \text{ CF}$   
CLEANOUT ELEVATION = 1027.00

MARK CLEAN OUT ELEVATION ON 4"x4" POST  
NOTE:  
NOTIFY FORSYTH COUNTY INSPECTOR 24 HOURS BEFORE THE BEGINNING PHASE OF CONSTRUCTION.  
CALL (770) 761-2106

**WETLANDS CERTIFICATION NOTES:**

THE DESIGN PROFESSIONAL, WHOSE SEAL APPEARS HEREON, CERTIFIES THE FOLLOWING: 1) THE NATIONAL MAP AND INVENTORY MAPS HAVE BEEN CONSULTED AND 2) THE APPROPRIATE PLAN SHEET DOES NOT IMPAIR AND DISTURB UNITED STATES WETLANDS AS SHOWN ON THESE MAPS.

**PHASED EROSION CONTROL PLAN AND BMP IMPLEMENTATION NOTES:**

1. A COMPREHENSIVE 3 PHASE EROSION CONTROL PLAN SHALL BE DEVELOPED TO REDUCE POLLUTANTS IN STORM WATER DISCHARGE FROM THIS SITE.
2. A COMPREHENSIVE 3 PHASE EROSION CONTROL PLAN SHALL BE IMPLEMENTED TO REDUCE POLLUTANTS IN STORM WATER DISCHARGE FROM THIS SITE. THE PLAN SHALL INCLUDE THE INSTALLATION OF TEMPORARY STORAGE AND PERMEABLE CONTROL BMP'S TO REDUCE THE RISK OF POLLUTANT TRANSPORT. TO PROVIDE REQUIRED SEDIMENT STORAGE, INSTALLATION OF TYPE 'NS' AND TYPE 'C' AND 'X' SEDIMENT TRAP TYPE 'C' AS SHOWN TO PROTECT EXISTING WATERWAY. TEMPORARY STORAGE SHALL BE INSTALLED UPON THE CONSTRUCTION OF PERMEABLE CONTROL BMP'S. PERMEABLE CONTROL BMP'S SHALL BE INSTALLED UPON CONSTRUCTION OF OTHER FURTHER FURTHER EROSION CONTROL MEASURES TO MINIMIZE SEDIMENT IN RUNOFF. THIS PHASE INCLUDES EROSION CONTROL, MULCHING AND TACKIFIER APPLICATION.
3. THE INITIAL PHASE 1 EROSION CONTROL PLAN SHALL INCLUDE INITIAL GRADING AND DRAINAGE BMP'S. BMP'S FOR PERMEABLE STORAGE AND PERMEABLE CONTROL SHALL BE IN PLACE DURING THIS PHASE. ADDITIONAL PHASE 2 EROSION CONTROL MEASURES SHALL BE INSTALLED UPON THE COMPLETION OF PERMEABLE STORAGE AND PERMEABLE CONTROL BMP'S.
4. THE INITIAL PHASE 3 EROSION CONTROL PLAN SHALL INCLUDE INITIAL GRADING AND DRAINAGE BMP'S. BMP'S FOR PERMEABLE STORAGE AND PERMEABLE CONTROL SHALL BE IN PLACE DURING THIS PHASE. ADDITIONAL PHASE 3 EROSION CONTROL MEASURES SHALL BE INSTALLED UPON THE COMPLETION OF PERMEABLE STORAGE AND PERMEABLE CONTROL BMP'S.

**ADDITIONAL EROSION CONTROL NOTES:**

1. ALL SLOPES STEEPER THAN 2:1 SHALL BE HYDROSEED AND COVERED WITH GEOT APPROVED ALL SLOPES STEEPER THAN 2:1 SHALL BE HYDROSEED AND COVERED WITH GEOT APPROVED WHEAT STRAW, WOOD FIBER MATTING OR COCOFIBER MATTING. ALL SLOPES MUST BE PROTECTED UNTIL A PERMANENT VEGETATIVE STAND IS ESTABLISHED.
2. SLOPES OVER 20 FEET IN HEIGHT SHALL BE STABILIZED IN STAGES BY MATTING AND SLOPES OVER 30 FEET IN HEIGHT SHALL BE STABILIZED IN STAGES BY MATTING AND VEGETATION. STABILIZATION MEASURES SHALL BE COMPLETED IN VERTICAL INCREMENTS NOT TO EXCEED 20 FEET IMMEDIATELY AT THE COMPLETION OF EACH 20 FOOT LEFT.
3. ALL SOIL FENCE SHALL UTILIZE TYPE 'C' FABRIC.

**GRADING NOTES:**

1. CONTRACTOR SHOULD MINIMIZE DISTURBANCE TO THE SITE BY PHASING CONSTRUCTION OF BASEMENT WALLS FROM TO REFRIGERATION MEASONS ON THE SOUTH AND WEST SIDES OF THE BUILDING.
2. THIS SITE IS LOCATED IN LAND LOT 784 OF THE 2ND DISTRICT, 1ST SECTION OF FORSYTH COUNTY, GEORGIA.
3. THE SITE ADDRESS IS: 565 MARLAND PARKWAY CUMMING, GEORGIA 30041
4. TOTAL PROPERTY AREA - 1.82 ACRES. PHASE 1 DISTURBED AREA - 1.752 ACRES.
5. THE SITE HAS ACCESS TO MARLAND PARKWAY BUT IS CURRENTLY UNDEVELOPED.
6. THE PROPOSED DEVELOPMENT IS FOR BUILDING IS 600 SQ. FT. HOTEL WITH PERIMETER AND ASSOCIATED UTILITIES. THE LIMITS OF DEVELOPMENT ARE SHOWN ON SHEET C03 OF THE PLANS.
7. RUNOFF FROM THE PROPOSED CONSTRUCTION WILL FLOW TO A PROPOSED STORM WATER MANAGEMENT FACILITY TO BE LOCATED IN THE NORTHWEST CORNER OF THE PROPERTY.
8. THE RECEIVING WATERS FOR THE AREA OF DISTURBANCE IS AN EXISTING STORM SEWER DISCHARGING TO THE EAST THAT NATURALLY FLOWS TO BIG CREEK.
9. THE SITE IS BOUNDED BY MARLAND PARKWAY TO THE WEST, DEVELOPED COMMERCIAL PROPERTIES TO THE NORTH AND EAST AND BY MARLAND 400 BOULEVARD TO THE SOUTH.
10. SITE RUNOFF DOES NOT FLOW TO A KNOWN IMPAIRED STREAM SEGMENT PER 2014 INTEGRATED 305(a)(2)(D) LIST OF IMPAIRED STREAMS IN THE STATE OF GEORGIA.
11. A COMBINATION OF SEDIMENT & EROSION CONTROL PRACTICES SHALL BE UTILIZED TO REDUCE POLLUTANTS IN STORM WATER DISCHARGE FROM THE SITE. A COMPREHENSIVE 3 PHASE EROSION CONTROL PLAN WILL BE IMPLEMENTED. THE FIRST PHASE EROSION CONTROL PLAN INCLUDES INSTALLATION OF A CONSTRUCTION EXIT, BARRIERS, SEDIMENT TRAPS, AND A SEDIMENT TRAP FOR SEDIMENT STORAGE. ADDITIONALLY, THE PLAN UTILIZES BMP'S TO CONTROL POLLUTANTS FROM WASTE DISPOSAL PRACTICES, SOIL ADDITIVES, REMEDIATION OF SPILLS AND LEAKS OF PETROLEUM PRODUCTS, CONCRETE TRUCK WASHOUTS, ETC.
12. THERE ARE NO STATE WATERS ON OR WITHIN 200 FT. OF THIS PROPERTY.
13. THE ES & N PLAN DESIGN PROFESSIONAL SHALL INSPECT THE INSTALLATION FOR THE INITIAL SEDIMENT STORAGE, FLOCCULANTS AND PERMEABLE CONTROL BMP'S WITHIN 7 DAYS AFTER INSTALLATION.
14. AMENDMENTS & REVISIONS TO THE ES & N WHICH HAVE A SIGNIFICANT EFFECT ON PARAMETERS & REVISIONS TO THE ES & N WHICH HAVE A SIGNIFICANT EFFECT ON BMP'S WITH A HYDROLOGIC COMPONENT MUST BE CERTIFIED BY A DESIGN PROFESSIONAL.
15. NO WASTE WILL BE DISPOSED OF INTO STORM WATER OUTLETS OR WATERS OF THE STATE, EXCEPT AS AUTHORIZED BY A SECTION 404 PERMIT.
16. SEDIMENT & EROSION CONTROL MEASURES AND PRACTICES TO BE INSTALLED DAILY.
17. ALL DISTURBED AREAS TO BE GRADED AS SHOWN AS CONSTRUCTION PAGES PERMIT.
18. CUT AND FILL SLOPES SHALL NOT EXCEED 5:1.
19. NO BURRY PITS ARE ALLOWED ON THE PROPERTY.

**EROSION CONTROL PLAN CERTIFICATION:**

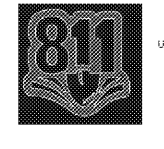
"I certify that the permittee's Erosion, Sedimentation and Pollution Control Plan provides for an appropriate and comprehensive system of best management practices required by the Georgia Water Quality Control Act and the document "Manual for Erosion and Sediment Control in Georgia" (Manual) published by the Georgia Soil and Water Conservation Commission as of January 1 of the year in which the land-disturbing activity was permitted, provides for the sampling of the receiving water(s) or the sampling of the stormwater outfalls and that the designed system of best management practices and sampling methods is expected to meet the requirements contained in the General NPDES Permit No. GAR100001."

SIGNED: \_\_\_\_\_

**SITE VISIT CERTIFICATION:**

I certify under penalty of law that this plan was prepared after a site visit to the locations described herein by myself or my authorized agent, under my supervision.

SIGNED: \_\_\_\_\_



IF YOU DIG GEORGIA  
CALL US FIRST!  
UTILITIES PROTECTION CENTER  
1-800-202-7411  
(404) 325-5000  
(METRO ATLANTA ONLY)  
**IT'S THE LAW**

**EROSION INTERMEDIATE**

PROJECT NO.	201902
DATE	01/15/2019

**CONSTRUCTION SCHEDULE**

WORK	START	END	STATUS
GRADING & EROSION CONTROL	WEEK 1	WEEK 2	COMPLETION
TEMPORARY STORAGE & PERMEABLE CONTROL BMP'S	WEEK 2	WEEK 3	COMPLETION
PERMANENT VEGETATION	WEEK 3	WEEK 4	COMPLETION

**HAZARDOUS WASTE NOTES:**

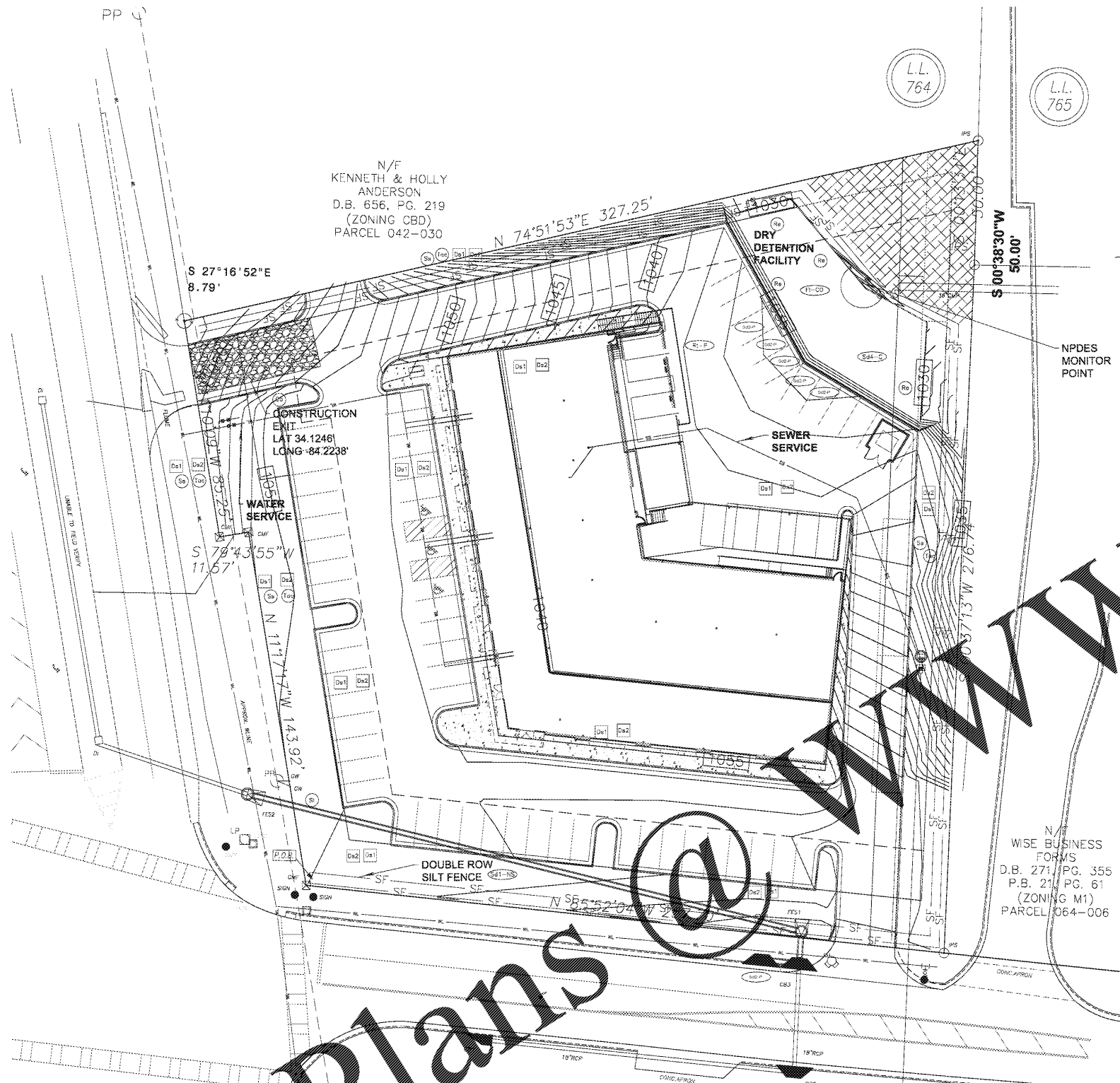
- ALL HAZARDOUS WASTE MATERIALS WILL BE DISPOSED AT THE SITE SAFELY AND IN ACCORDANCE WITH LOCAL, STATE AND FEDERAL REGULATIONS.
- PERSONNEL IN THEIR PRACTICES SHALL FOLLOW THE FOLLOWING PROCEDURES TO AVOID CONTACT WITH HAZARDOUS WASTE MATERIALS THAT IS NOT TO BE MANAGED ON SITE:
- HAZARDOUS WASTE MATERIALS WILL BE STORED IN THE IMMEDIATE AREA WHERE GENERATED AND STORED IN THE IMMEDIATE AREA WHERE GENERATED.
- HAZARDOUS WASTE MATERIALS WILL BE STORED IN THE IMMEDIATE AREA WHERE GENERATED AND STORED IN THE IMMEDIATE AREA WHERE GENERATED.
- HAZARDOUS WASTE MATERIALS WILL BE STORED IN THE IMMEDIATE AREA WHERE GENERATED AND STORED IN THE IMMEDIATE AREA WHERE GENERATED.

**SOIL CLEANUP AND SPILL CONTROL PRACTICES:**

- SOIL CLEANUP AND SPILL CONTROL PRACTICES: LOCAL, STATE AND MANUFACTURER'S RECOMMENDED METHODS FOR SPILL CLEANUP WILL BE CLEARLY POSTED AND PROCEDURES WILL BE MADE AVAILABLE TO SITE PERSONNEL.
- HAZARDOUS WASTE MATERIALS WILL BE STORED IN THE IMMEDIATE AREA WHERE GENERATED AND STORED IN THE IMMEDIATE AREA WHERE GENERATED.
- HAZARDOUS WASTE MATERIALS WILL BE STORED IN THE IMMEDIATE AREA WHERE GENERATED AND STORED IN THE IMMEDIATE AREA WHERE GENERATED.
- HAZARDOUS WASTE MATERIALS WILL BE STORED IN THE IMMEDIATE AREA WHERE GENERATED AND STORED IN THE IMMEDIATE AREA WHERE GENERATED.

**SANITARY WASTE NOTES:**

- A MINIMUM OF ONE PORTABLE SANITARY UNIT WILL BE PROVIDED FOR EVERY TEN (10) WORKERS ON THE SITE.
- ALL SANITARY WASTE WILL BE COLLECTED FROM THE PORTABLE UNITS A MINIMUM OF ONE TIME PER WEEK BY A LICENSED PORTABLE FACILITY PROVIDED IN COMPLIANCE WITH LOCAL AND STATE REGULATIONS.
- ALL SANITARY WASTE UNITS WILL BE LOCATED IN AN AREA WHERE THE LIKELIHOOD OF THE UNIT CONTRIBUTING TO STORMWATER DISCHARGE IS NEGLIGIBLE.
- ADDITIONAL CONTAINMENT BMP'S MUST BE IMPLEMENTED, SUCH AS GRAVEL BARRIERS OR SPECIALLY DESIGNED PLASTIC SKID CONTAINERS AROUND THE BASE, TO PREVENT WASTES FROM CONTRIBUTING TO STORMWATER DISCHARGE.
- THE LOCATION OF SANITARY WASTE UNITS MUST BE IDENTIFIED ON THE EROSION CONTROL PLAN GRADING PHASE SHEET C7-03, BY THE CONTRACTOR UNDER THE DIRECTION OF THIS PROJECT.
- SANITARY SEWER WILL BE PROVIDED BY THE MUNICIPAL AUTHORITY AT THE COMPLETION OF THIS PROJECT.



**Disclaimer**  
THESE PLANS AND DIMENSIONS ARE NOT TO BE CHANGED IN ANY FORM OR MANNER WHATSOEVER WITHOUT FIRST OBTAINING THE EXPRESS WRITTEN PERMISSION AND CONSENT OF ROEHL, LLC. ANY CHANGES MADE FROM THESE PLANS WITHOUT CONSENT OF ROEHL, LLC ARE UNAUTHORIZED AND SHALL RELIEVE ROEHL, LLC OF RESPONSIBILITY FOR ALL CONSEQUENCES ARISING OUT OF SUCH CHANGES.