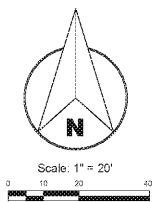


PROJECT TITLE
POPS WINE & SPIRITS
FORSYTH COUNTY, GA



EROSION CONTROL LEGEND table with columns for CODE, PRACTICE, and SYMBOL. Includes items like CONSTRUCTION EXIT, SEDIMENT BARRIER, INLET SEDIMENT TRAP, etc.

EROSION CONTROL LEGEND table with columns for CODE, PRACTICE, and SYMBOL. Includes items like DURE INLET PROTECTION, STABILIZATION MULCHING ONLY, etc.

PHASE I - DETENTION / TEMPORARY SEDIMENT BASIN

Sd 4-C
DA = 2.82 ACRES
VOLUME REQUIRED = 1.82 ACRES X 67 CY/ACRE = 121.94 CY OR 3,292.38 CF

VOLUME PROVIDED
V = 0.4 * AREA (SF) * DEPTH (FT) =
0.4 * 3,863.70 * 3 = 4,636.44 CF
SPILLWAY ELEVATION = 1028.50
CLEANOUT VOLUME REQUIRED
Vreq = 1/3 * 4,636.44 CF = 1,545.48 CF
CLEANOUT ELEVATION = 1027.00

MARK CLEAN OUT ELEVATION ON 4"x4" POST
NOTE:
NOTIFY FORSYTH COUNTY INSPECTOR 24 HOURS BEFORE THE BEGINNING PHASE OF CONSTRUCTION.
CALL (770) 781-1265

THE ESCAPE OF SEDIMENT FROM THE SITE SHALL BE PREVENTED BY THE INSTALLATION OF EROSION AND SEDIMENT CONTROL MEASURES AND PRACTICES PRIOR TO LAND DISTURBING ACTIVITIES.

EROSION CONTROL MEASURES WILL BE MAINTAINED AT ALL TIMES. IF FULL IMPLEMENTATION OF THE APPROVED PLAN DOES NOT PROVIDE FOR EFFECTIVE EROSION CONTROL, ADDITIONAL EROSION AND SEDIMENT CONTROL MEASURES SHALL BE IMPLEMENTED TO CONTROL OR TREAT THE SEDIMENT SOURCE.

ANY DISTURBED AREA LEFT EXPOSED FOR A PERIOD GREATER THAN 14 DAYS SHALL BE STABILIZED WITH MULCH OR TEMPORARY SEEDING.

PAINTS / FINISHES / SOLVENTS HANDLING NOTE: ALL PRODUCTS WILL BE STORED IN TIGHTLY SEALED ORIGINAL CONTAINERS WHEN NOT IN USE. EXCESS PRODUCT WILL NOT BE DISCHARGED TO THE STORM WATER COLLECTION SYSTEM EXCESS PRODUCT MATERIALS USED WITH THESE PRODUCTS AND PRODUCT CONTAINERS WILL BE DISPOSED OF ACCORDING TO MANUFACTURER'S SPECIFICATIONS AND RECOMMENDATIONS.

CONCRETE TRUCK WASHING NOTE: NO CONCRETE TRUCKS WILL BE ALLOWED TO WASH OUT OR DISCHARGE SOLUBLE CONCRETE OR BRUSH WASH WATER ON-SITE.

PETROLEUM PRODUCT HANDLING NOTE: CONTAINERS FOR PRODUCTS SUCH AS FUELS, LUBRICANTS AND TARS WILL BE INSPECTED DAILY FOR LEAKS AND SPILLS. THIS INCLUDES ON SITE VEHICLE AND MACHINERY DAILY INSPECTIONS AND REGULAR PREVENTATIVE MAINTENANCE OF SUCH EQUIPMENT.

FERTILIZER / HERBICIDES HANDLING NOTE: THESE PRODUCTS WILL BE APPLIED AT RATES THAT DO NOT EXCEED THE MANUFACTURER'S SPECIFICATIONS OR ABOVE GUIDELINES SET FORTH IN THE GROW ESTABLISHMENT USE BY THE GEORGIA DEPARTMENT OF AGRICULTURE & SEEDS. STORAGE OF THESE MATERIALS WILL BE UNDER LOCK AND KEYS IN SEALED CONTAINERS.

BUILDING MATERIALS HANDLING NOTE: NO BUILDING OR CONSTRUCTION MATERIALS WILL BE BURIED OR DISPOSED OF ON SITE. ALL SUCH MATERIAL WILL BE DEPOSED OF WITH PROPER WASTE DISPOSAL PROCEDURES. ALL BUILDING MATERIALS SHALL BE COVERED DURING ALL TIMES.

WASTE MATERIALS HANDLING NOTE: ALL WASTE MATERIALS WILL BE COLLECTED AND STORED IN A SECURELY LOCKED METAL DUMPSTER. THE DUMPSTER WILL BE FULLY LINED WITH 6 MIL SOLID WASTE MANAGEMENT REGULATIONS. ALL TRASH AND CONSTRUCTION DEBRIS FROM THE SITE WILL BE DEPOSITED IN THE DUMPSTER. THE DUMPSTER WILL BE EMPLOYED A MINIMUM OF ONCE A WEEK OR MORE OFTEN IF NECESSARY AND TRASH WILL BE HAULAWAY AS REQUIRED BY LOCAL REGULATIONS. NO CONSTRUCTION WASTE WILL BE BURIED ON-SITE.

ALL PERSONNEL WILL BE INSTRUCTED ON PROPER PROCEDURES FOR WASTE DISPOSAL. A NOTICE STATING THESE PROCEDURES WILL BE POSTED AT THE SITE AND THE CONTRACTOR WILL BE RESPONSIBLE FOR SEEING THAT THESE PROCEDURES ARE FOLLOWED.

RUNOFF COEFFICIENT:
WEIGHTED PRE-CONSTRUCTION CURVE NUMBER: 63.1
WEIGHTED POST-CONSTRUCTION CURVE NUMBER: 52.7
SEE HYDROLOGY REPORT FOR ADDITIONAL INFORMATION (SUBMITTED CONCURRENTLY WITH PLANS)

SITE DATA
TOTAL ACREAGE 1.82 ACRES
DISTURBED ACREAGE 1.75 ACRES

FLOOD STATEMENT
THE SUBJECT PROPERTY SHOWN ABOVE LIES WITHIN AN AREA OF MINIMAL FLOOD HAZARD - ZONE X
AS IDENTIFIED ON FIRM
COMMUNITY PANEL NUMBER 1311022002 DATUM 3/4/2013

WETLANDS CERTIFICATION NOTES:

THE DESIGN PROFESSIONAL, WHOSE SEAL APPEARS HEREON, CERTIFIES THE FOLLOWING: 1) THE NATIONAL WETLANDS AND SWAMPLANDS INVENTORY MAP HAS BEEN CONSULTED AND 2) THE APPROPRIATE PLAN SHEET SHOWS THE LOCATED AREAS UNLESS SHOWN TO BE A CORP OF EROSION, SEDIMENTATION, OR POLLUTION CONTROL PRACTICES.

PHASED EROSION CONTROL PLAN AND BMP IMPLEMENTATION NOTES:

- 1. A COMBINATION OF SEDIMENT & EROSION CONTROL PRACTICES SHALL BE INSTALLED TO REDUCE POLLUTANTS IN STORM WATER DISCHARGE FROM THE SITE. A COMPREHENSIVE 3 PHASE EROSION CONTROL PLAN SHALL BE IMPLEMENTED. THE INITIAL PHASE 1 EROSION CONTROL PLAN SHALL INCLUDE THE INSTALLATION OF THE REQUIRED PERMIT STORAGE AND PERMITTER CONTROL BMP'S WITHIN 7 DAYS AFTER INSTALLATION OF A CONSTRUCTION EXIT. NON-SENSITIVE SILT FENCES AND A SEDIMENT TRAP FOR SEDIMENT STORAGE. ADDITIONALLY, THE PLAN UTILIZES BMP'S TO CONTROL POLLUTANTS FROM WASTE DISPOSAL PRACTICES, SOIL ADDITIVES, REMEDIATION OF SPILLS AND LEAKS OF PETROLEUM PRODUCTS, CONCRETE TRUCK WASHOUT, ETC.

ADDITIONAL EROSION CONTROL NOTES:

- 1. ALL SLOPES STEEPER THAN 2:1 SHALL BE HYDROSEEDED AND COVERED WITH GOOD APPROVED ALL SLOPES STEEPER THAN 2:1 SHALL BE HYDROSEEDED AND COVERED WITH GOOD APPROVED WHEAT STRAW, WOOD FIBER MATTING OR COCONUT FIBER MATTING. ALL SLOPES MUST BE PROTECTED UNTIL A PERMANENT VEGETATIVE STAND IS ESTABLISHED.

GRADING NOTES:

- 1. THIS SITE IS LOCATED IN LAND LOT 784 OF THE 2ND DISTRICT, 1ST SECTION OF THIS SITE IS LOCATED IN LAND LOT 281 OF THE 2ND DISTRICT, 1ST SECTION OF FORSYTH COUNTY, GEORGIA.
- 2. THE SITE ADDRESS IS: 905 MCARDLAND PARKWAY CORNING, GEORGIA 30628
- 3. TOTAL PROPERTY AREA = 1.822 ACRES; PHASE 1 DISTURBED AREA = 1.752 ACRES.
- 4. THE SITE HAS ACCESS TO MCARDLAND PARKWAY BUT IS CURRENTLY UNDEVELOPED.
- 5. THE PROPOSED DEVELOPMENT IS FOR BUILDINGS 15,000 SQ. FT. HOTEL WITH PARKING AND ASSOCIATED UTILITIES. THE LIMITS OF DEVELOPMENT ARE DEPICTED ON SHEET C3 OF THE PLANS.
- 6. RUNOFF FROM THE PROPOSED CONSTRUCTION WILL FLOW TO A PROPOSED STORM WATER MANAGEMENT FACILITY TO BE LOCATED IN THE NORTHEAST PORTION OF THE PROPERTY.
- 7. THE RECEIVING WATERS FOR THE AREA OF DISTURBANCE IS AN EXISTING STORM SEWER DISCHARGING TO THE EAST THAT ULTIMATELY FLOWS TO BIG CREEK.
- 8. THE SITE IS BOUNDED BY MCARDLAND PARKWAY TO THE WEST, DEVELOPED COMMERCIAL PROPERTIES TO THE NORTH AND EAST AND MCARDLAND AVE AND BUCKLEHEAD TO THE SOUTH.
- 9. SITE RUNOFF DOES NOT FLOW TO A KNOWN IMPAIRED STREAM SEGMENT PER 2014 - SEE SWQRF DOES NOT FLOW TO A KNOWN IMPAIRED STREAM SEGMENT PER 2014 INTEGRATED 305 (b)(2)(3)(4) LIST OF IMPAIRED STREAMS IN THE STATE OF GEORGIA.
- 10. A COMBINATION OF SEDIMENT & EROSION CONTROL PRACTICES SHALL BE UTILIZED TO REDUCE POLLUTANTS IN STORM WATER DISCHARGE FROM THE SITE. A COMPREHENSIVE 3 PHASE EROSION CONTROL PLAN WILL BE IMPLEMENTED. THE FIRST PHASE EROSION CONTROL PLAN INCLUDES INSTALLATION OF A CONSTRUCTION EXIT, NON-SENSITIVE SILT FENCES, AND A SEDIMENT TRAP FOR SEDIMENT STORAGE. ADDITIONALLY, THE PLAN UTILIZES BMP'S TO CONTROL POLLUTANTS FROM WASTE DISPOSAL PRACTICES, SOIL ADDITIVES, REMEDIATION OF SPILLS AND LEAKS OF PETROLEUM PRODUCTS, CONCRETE TRUCK WASHOUT, ETC.
- 11. THERE ARE NO STATE WATERS ON OR WITHIN 100 FT. OF THIS PROPERTY.
- 12. THE ES & P PLAN DESIGN PROFESSIONAL SHALL INSTRUCT THE INSTALLATION FOR THE INITIAL SEDIMENT STORAGE REQUIREMENTS AND PERMITTER CONTROL BMP'S WITHIN 7 DAYS AFTER INSTALLATION. ANNOTATIONS A-F REFER TO THE ES & P WHICH HAVE A SIGNIFICANT EFFECT ON BMP'S WITH A HYDROLOGIC COMPONENT MUST BE CERTIFIED BY A DESIGN PROFESSIONAL.
- 13. THE LOCATION OF SANITARY WASTE UNITS MUST BE IDENTIFIED ON THE EROSION CONTROL PLAN GRADING PHASE, SHEET C7.01, BY THE CONTRACTOR ONCE THE LOCATIONS HAVE BEEN DETERMINED.
- 14. NO WASTE WILL BE DEPOSITED OR BURIED IN STORM WATER OUTLETS OR WATERS OF THE STATE, EXCEPT AS AUTHORIZED BY A SECTION 404 PERMIT.
- 15. SEDIMENT & EROSION CONTROL MEASURES AND PRACTICES SHALL BE MAINTAINED DAILY.
- 16. ALL DISTURBED AREAS TO BE GRADED AS SOON AS CONSTRUCTION PHASES PERMIT.
- 17. CUT AND FILL SLOPES SHALL NOT EXCEED 3H:1V.
- 18. NO BARE FTS ARE ALLOWED ON THE PROPERTY.

EROSION CONTROL PLAN CERTIFICATION:

I certify that the permittee's Erosion, Sedimentation and Pollution Control Plan provides for an appropriate and comprehensive system of best management practices required by the Georgia Water Quality Control Act and the document "Manual for Erosion and Sediment Control in Georgia" (Manual) published by the Georgia Soil and Water Conservation Commission as of January 1 of the year in which the land-disturbing activity was permitted, provides for the sampling of the receiving water(s) or the sampling of the stormwater outfalls and that the designed system of best management practices and sampling methods is expected to meet the requirements contained in the General NPDES Permit No. GA100001.

SIGNED: [Signature]

SITE VISIT CERTIFICATION:

I certify under penalty of law that this plan was prepared after a site visit to the locations described herein by myself or my authorized agent, under my supervision.

SIGNED: [Signature]

SANITARY WASTE NOTES:

- 1. A MINIMUM OF ONE PORTABLE SANITARY UNIT WILL BE PROVIDED FOR EVERY TEN (10) WORKERS ON THE SITE.
- 2. ALL SANITARY WASTE WILL BE COLLECTED FROM THE PORTABLE SANITARY UNITS BY THE END OF THE PERIOD OF ONE (1) HOUR PER WEEK BY A LICENSED PORTABLE FACILITY PROVIDING COMPLETE COMPLIANCE WITH LOCAL AND STATE REGULATIONS.
- 3. ALL SANITARY WASTE UNITS WILL BE LOCATED IN AN AREA WHERE THE UNDERFLOW OF THE UNIT CONTRIBUTING TO STORMWATER DISCHARGE IS NEGLECTABLE.
- 4. ADDITIONAL CONTAINMENT BMP'S MUST BE IMPLEMENTED, SUCH AS GRAVEL BARS OR SPECIALLY DESIGNED PLASTIC SKID CONTAINERS AROUND THE BASE, TO PREVENT WASTES FROM CONTRIBUTING TO STORMWATER DISCHARGE.
- 5. THE LOCATION OF SANITARY WASTE UNITS MUST BE IDENTIFIED ON THE EROSION CONTROL PLAN GRADING PHASE, SHEET C7.01, BY THE CONTRACTOR ONCE THE LOCATIONS HAVE BEEN DETERMINED.
- 6. SANITARY SEWER WILL BE PROVIDED BY THE MUNICIPAL AUTHORITY AT THE COMPLETION OF THIS PROJECT.

CONSTRUCTION SCHEDULE

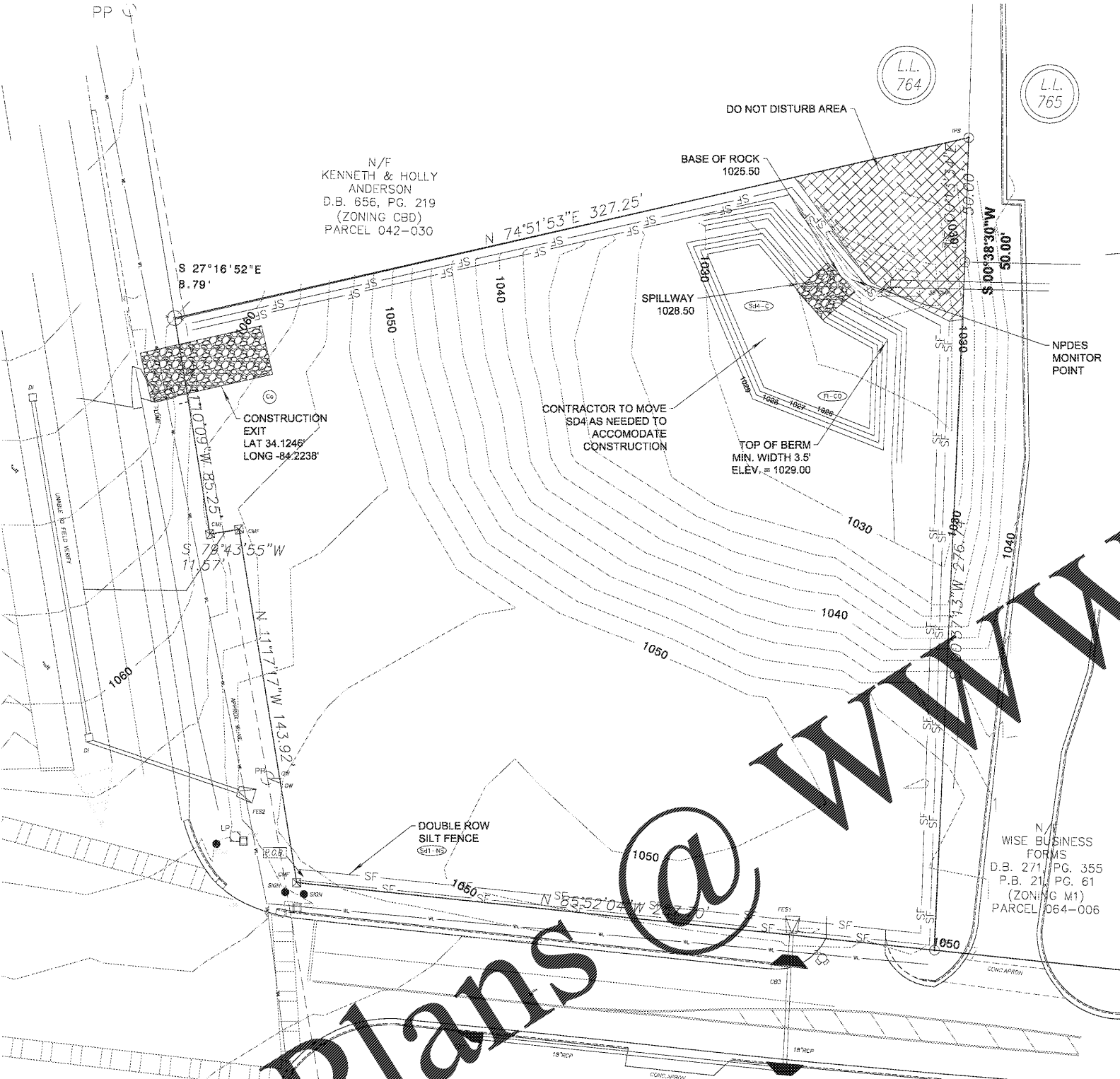
Table with columns for WEEK 1 through WEEK 6, detailing construction activities like CLEARING, CONSTRUCTION EXIT, GRADING, STORM WATER, etc.

Table with columns for MARK FENCE, PAINTING, UTILITIES, CURB, FINAL LANDSCAPING, etc.

SOIL CLEANUP AND SPILL CONTROL PRACTICES:

- 1. SOIL CLEANUP AND SPILL CONTROL PRACTICES: LOCAL, STATE AND MANUFACTURER'S RECOMMENDED METHODS FOR SPILL CLEANUP WILL BE CLEARLY POSTED AND PROCEDURES WILL BE MADE AVAILABLE TO SITE PERSONNEL.
- 2. MATERIAL AND EQUIPMENT NECESSARY FOR SPILL CLEANUP WILL BE KEPT IN THE MATERIAL STORAGE AREAS.
- 3. TYPICAL MATERIALS AND EQUIPMENT INCLUDES, BUT IS NOT LIMITED TO, BOXES, DRUMS, PUMPS, KAGS, GLOVES, GOGGLES, CAT LITTER, SAND, SAWDUST, AND PROPERLY LABELED PLASTIC AND METAL WASTE CONTAINERS.
- 4. SPILL PREVENTION PRACTICES AND PROCEDURES WILL BE REVIEWED AFTER A SPILL AND ADJUSTED AS NECESSARY TO PREVENT FUTURE SPILLS.
- 5. ALL SPILLS WILL BE CLEANED UP IMMEDIATELY UPON DISCOVERY.
- 6. ALL SPILLS WILL BE REPORTED AS REQUIRED BY LOCAL, STATE AND FEDERAL REGULATIONS.
- 7. FOR SPILLS THAT IMPACT SURFACE WATER (E.G. A SPILL ON SURFACE WATER), THE NATIONAL RESPONSE CENTER (NRC) WILL BE CONTACTED WITHIN 24 HOURS AT 1-800-426-5875.
- 8. FOR SPILLS OF AN UNKNOWN AMOUNT, THE NATIONAL RESPONSE CENTER (NRC) WILL BE CONTACTED WITHIN 24 HOURS AT 1-800-426-5875.
- 9. FOR SPILLS GREATER THAN 25 GALLONS AND NO SURFACE WATER IMPACTS OCCUR, THE GEORGIA E.P.D. WILL BE CONTACTED WITHIN 24 HOURS.
- 10. FOR SPILLS LESS THAN 25 GALLONS AND NO SURFACE WATER IMPACTS OCCUR, THE SPILL WILL BE CLEANED UP AND LOCAL AGENCIES WILL BE CONTACTED AS REQUIRED.

THE CONTRACTOR SHALL NOTIFY THE LICENSED PROFESSIONAL WHO PREPARED THIS PLAN IF MORE THAN 1,000 GALLONS OF PETROLEUM IS STORED ON-SITE. THIS INCLUDES CAPACITIES OF EQUIPMENT OR IF ANY ONE PIECE OF EQUIPMENT HAS A CAPACITY GREATER THAN 660 GALLONS. THE CONTRACTOR WILL NEED A SPILL PREVENTION CONTAINMENT AND CONTINGENCY PLAN PREPARED BY THE LICENSED PROFESSIONAL.



N/F KENNETH & HOLLY ANDERSON D.B. 656, PG. 219 (ZONING CBD) PARCEL 042-030

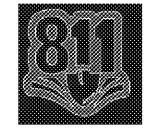
CONSTRUCTION EXIT LAT 34.1246' LONG -84.2238'

CONTRACTOR TO MOVE SD4 AS NEEDED TO ACCOMMODATE CONSTRUCTION

TOP OF BERM MIN. WIDTH 3.5' ELEV. = 1029.00

N/W WISE BUSINESS FORMS D.B. 271 PG. 355 P.B. 211 PG. 61 (ZONING M1) PARCEL 064-006

Disclaimer: THESE PLANS AND DIMENSIONS ARE NOT TO BE CHANGED IN ANY FORM OR MANNER WITHOUT FIRST OBTAINING THE WRITTEN PERMISSION AND CONSENT OF ROEHL, LLC. ANY CHANGES MADE FROM THESE PLANS WITHOUT CONSENT OF ROEHL, LLC ARE UNAUTHORIZED AND SHALL RELIEVE ROEHL, LLC OF RESPONSIBILITY FOR ALL CONSEQUENCES ARISING OUT OF SUCH CHANGES.



IF YOU DIG GEORGIA CALL US FIRST! UTILITIES PROTECTION CENTER 1-800-292-7411 (404) 325-5500 (METRO ATLANTA ONLY) IT'S THE LAW

EROSION INITIAL

Table with columns for PROJECT NO., DATE, and other tracking information.

C7.01