

1 CANOPY ELECTRICAL REFLECTED CEILING PLAN  
1/8" = 1'-0"

Lighting Fixture Schedule						
TYPE	MANUF.	CATALOG NO.	QUANT.	WATTS / LAMP	LAMPS / FIXTURE	MGT.
FD		LED - DECK MOUNT - SLOPED ADAPTOR	24	114 W	1	SURFACE

ALL LIGHT FIXTURES AND LAMPS SUPPLIED BY WAWA, INSTALLED BY G.C.  
COORDINATE FIXTURE COUNT, LOCATIONS AND LAMP OUTPUT WITH SITE LIGHTING ENGINEERING DRAWINGS

TANKS AND CANOPY CONDUIT AND CONDUCTOR NOTES:

THE GENERAL CONTRACTOR SHALL FURNISH AND INSTALL ALL GRC CONDUIT, ASSOCIATED FITTINGS AND WIRE NECESSARY TO PROVIDE A COMPLETE ELECTRICAL SYSTEM FOR THE GAS CANOPY, FUEL TANKS, MUSIC AND INTERCOM SYSTEM.

HOWEVER, THE FOLLOWING CONDUIT SHALL BE PROVIDED AND INSTALLED BY THE CONTRACTOR INDICATED BELOW.

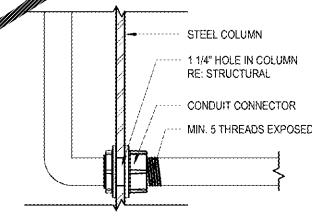
**FUEL TANKS**  
PETROLEUM CONTRACTOR SHALL FURNISH AND INSTALL THE CONDUIT FROM THE EDGE OF THE FUEL TANK CONCRETE PAD AND TERMINATE AT THE TANK EQUIPMENT.

**GAS CANOPY**  
PETROLEUM CONTRACTOR SHALL FURNISH AND INSTALL THE CONDUIT FROM THE EDGE OF THE CONCRETE CANOPY PAD TO THE BASE OF THE CANOPY COLUMNS WHERE THEY WILL MAKE A THREADED CONNECTION. (REFER TO DETAIL 4CE1) CANOPY FABRICATOR SHALL FURNISH AND INSTALL THE THREADED CONNECTOR (MIN 5 EXPOSED THREADS) AT THE BASE OF THE CANOPY COLUMN AND CONTINUE UP THROUGH THE COLUMN TO A SEAL OFF AND J-BOX AT 2'-4" THEN CONTINUE WITH RIGID CONDUIT TO THE BOTTOM OF THE CANOPY WHERE IT WILL TRANSITION INTO SEAL TIGHT CONDUIT AND TERMINATE AT THE FIRST ROW OF LIGHTS. GC SHALL CONNECT INTO THE FIRST ROW OF LIGHTS AND COMPLETE THE ELECTRICAL CANOPY LIGHTING.

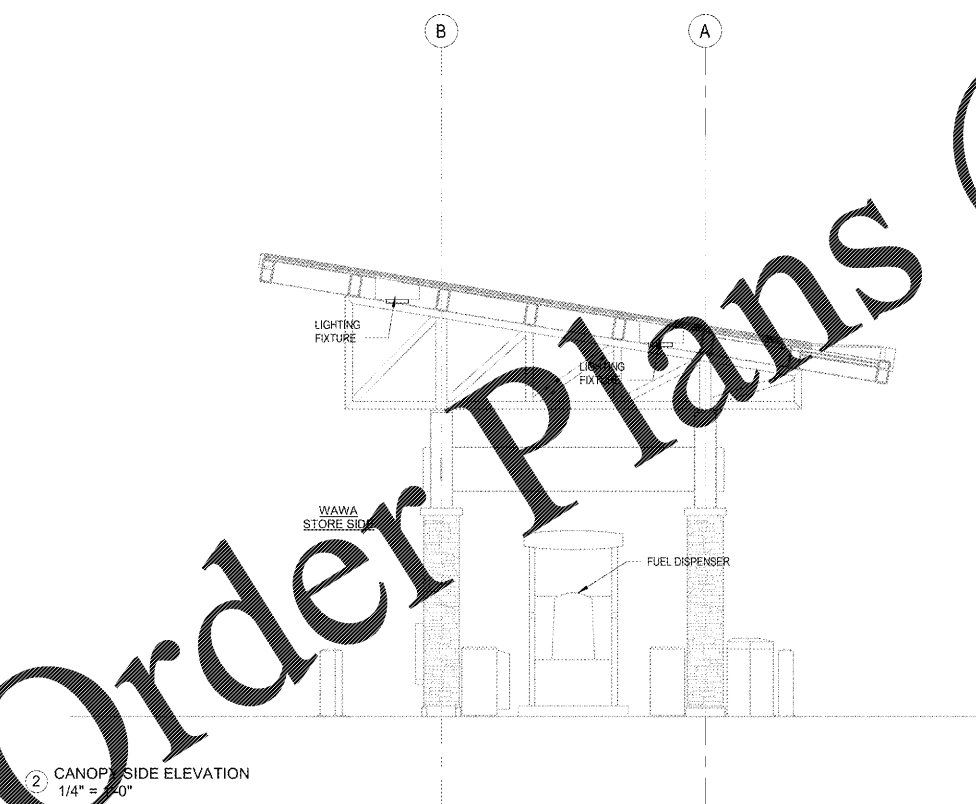
PETROLEUM CONTRACTOR SHALL ALSO INSTALL THE CONDUIT FROM THE EDGE OF THE CONCRETE CANOPY PAD TO THE TERMINATION POINT FOR THE MUSIC AND INTERCOM SYSTEMS.

ELECTRICAL NOTES

- ALL FIXTURES AND COMPONENTS SHALL BE GROUNDED BY A SEPARATE #10 GROUND WIRE.
- PETROLEUM CONTRACTOR TO PULL WIRING FOR INTERCOM AT CANOPY. PROVIDED BY OTHER.
- THE CONDUIT FOR THE 'FD' FIXTURES TO RUN ALONG THE GUTTER OF THE CANOPY TO THE FIXTURES IN THE FLUTES OF THE DECKING. NO CONDUIT SHOULD BE VISIBLE BELOW THE CANOPY.
- FOR DISPENSER DATA, VEEDER-ROOT SENSOR, AND INTERCOM MUSIC PROVIDE CONDUCTORS AND CONNECTIONS AS REQUIRED. COORDINATE WITH WAWA CONSTRUCTION MANAGER.
- USE THIS CIRCUIT TO PROVIDE POWER TO 208 VOLT ILLUMINATION SIGN AT THIS LOCATION BETWEEN CANOPY COLUMNS AT APPROXIMATELY 12' APART.
- ELECTRICAL CONTRACTOR TO COORDINATE WITH PETROLEUM CONTRACTOR AND GENERAL CONTRACTOR TO MAKE SURE ALL SEAL OFF FITTINGS AS REQUIRED ARE PROVIDED FOR CONDUITS ENTERING THE FUEL TANKS AND THAT THE ELECTRICAL INSTALLATION AT THE GAS CANOPY AND FUEL TANKS IS IN ACCORDANCE WITH NECA ARTICLE 300.100 FEET FOR BRANCH CIRCUITS OUT TO CANOPY AREA. IF CIRCUIT LENGTHS EXCEEDS 100 FEET WIRE CONDUIT MUST BE UPSIZED PER NEC TO PREVENT EXCESSIVE VOLTAGE DROP.
- LIGHT FIXTURES PROVIDED BY WAWA AND INSTALLED BY CANOPY VENDOR. E.C. RESPONSIBLE FOR CONDUIT WIRING AND FINAL CONNECTIONS. VERIFY EXACT LOCATION WITH G.C. AND ARCHITECTURAL DRAWINGS. E.C. TO RUN WIRING, CONDUIT AND CONNECT TO LOCAL CIRCUITRY.



4 THREADED CONNECTION  
3" x 1'-0"



2 CANOPY SIDE ELEVATION  
1/4" = 1'-0"

**GASOLINE CONDUIT REQUIREMENTS:**

- (1) 1" GRC TO CANOPY COLUMN FOR INTERCOMMUNICATION
- (1) 1" GRC TO CANOPY COLUMN FOR LIGHTING.
- (3) 1" GRC TO EACH DISPENSER (1 POWER, 1 DATA, 1 MUSIC)
- (1) 3/4" GRC TO EACH DISPENSER (FUEL TANK MONITOR SENSOR)
- (2) 1" GRC TO EACH TANK CONTAINMENT UNIT. F.E. PETRO POWER (1 POWER, 1 SPARE)
- (1) 3/4" GRC TO EACH TANK CONTAINMENT UNIT. (FUEL TANK MONITOR MAGNETOINDUCTIVE PROBE)
- (1) 3/4" GRC TO EACH TANK CONTAINMENT UNIT. (FUEL TANK MONITOR SENSOR)
- (1) 3/4" GRC TO EACH TANK CONTAINMENT UNIT. (FUEL TANK MONITOR MULTI-PORT FILL SUMP)
- (1) 3/4" GRC TO EACH TANK CONTAINMENT UNIT. (FUEL TANK MONITOR BRINE INTERSTITIAL RESERVOIR)
- (1) 1" GRC TO OVERFILL ALARM. (ON VENT STACK)
- (1) 1" GRC TO VENT STACK (SPARE)
- (1) 1" GRC TO CANOPY COLUMN FOR SPEAKER (PA STORE ONLY)
- (1) 1" GRC TO CANOPY COLUMN FOR SPARE

1925 Prospect Ave.  
Owensboro, KY 40301  
(407) 668-1100  
(407) 668-9101  
www.c-p.com

**Chahaci & Peterson**  
Architects Engineers Planners

CLIENT NAME  
**WAWA**  
280 W. BALTIMORE PIKE  
WAWA, PA 19083

PROJECT NAME  
**STRAIGHT 6 GAS CAN. 2018 01-MA**  
**STORE #PHM - 8647**  
PARRHAM RD. & THREE CHOFT RD.  
HENRICO VA

Revision Schedule	No.	Description	Date
		PERMIT SET	09/21/2018
		BID SET	01/28/2019

PROJECT NO. 2180133  
DATE 09-21-2018  
DRAWN M.B.  
CHECKED J.P.M.

CE1

Order Plans @ WWW.ONLINE.COM

ELECTRICAL CANOPY PLANS, DETAILS, SCHEDULES