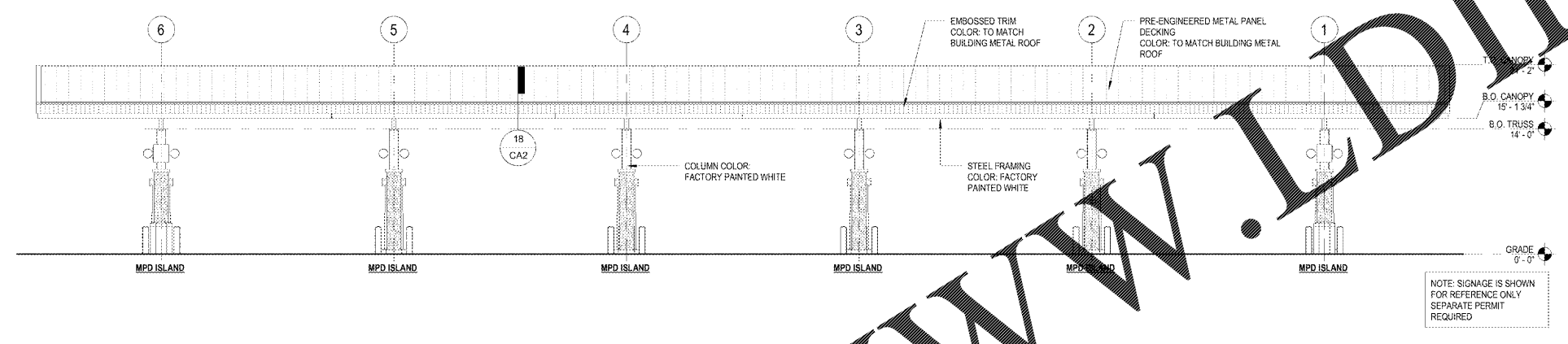
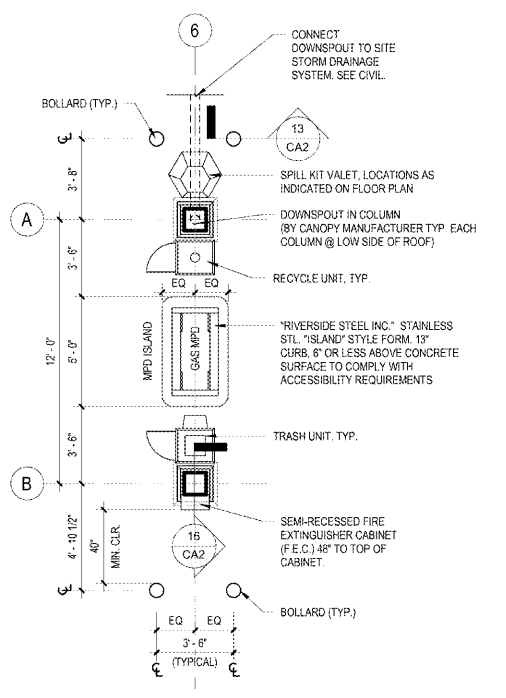


5 CANOPY FLOOR PLAN
CA1 1/8" = 1'-0"

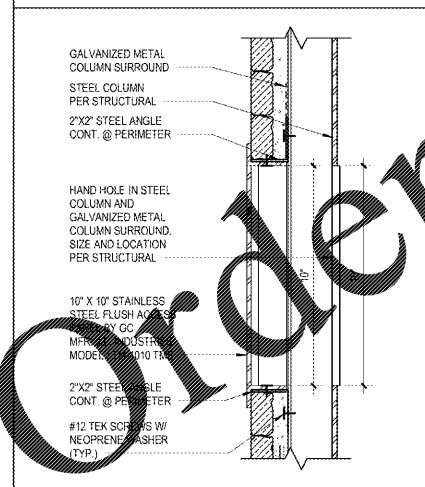


10 CANOPY ELEVATION
CA1 1/8" = 1'-0"

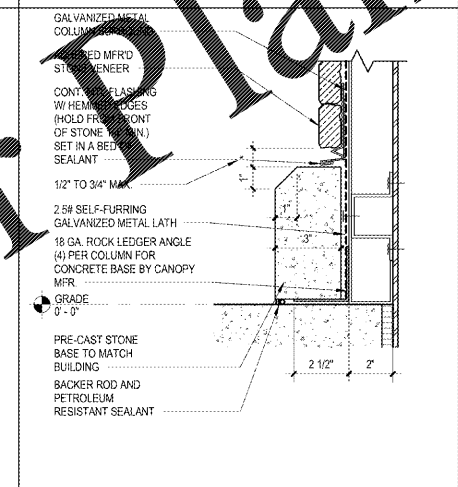


17 GAS ISLAND DETAIL
CA1 1/4" = 1'-0"

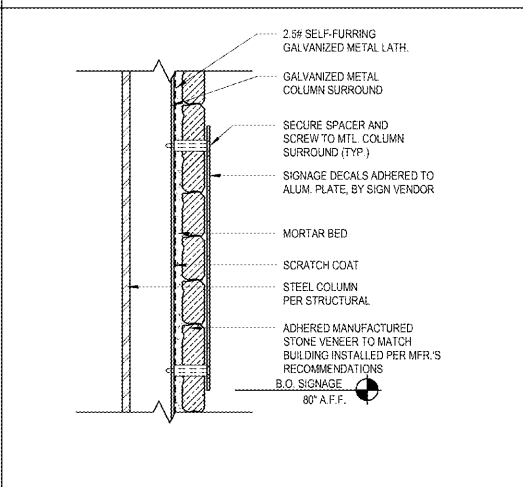
- GENERAL NOTES**
1. ALL WORK SHALL COMPLY WITH THE INTERNATIONAL BUILDING CODE (IBC) NFPA 30A CODE FOR MOTOR FUEL DISPENSING FACILITIES AND REPAIR GARAGES AND NFPA 10 STANDARD FOR PORTABLE FIRE EXTINGUISHERS. SEE COVER SHEET FOR DETAILED CODE INFORMATION.
 2. FIRE EXTINGUISHER CABINETS (F.E.C.) SHALL BE STAINLESS STEEL SURFACE MOUNTED AS MANUFACTURED BY J.L. INDUSTRIES, COSMOPOLITAN SERIES, MODEL #2033, WITH FULL CLEAR ACRYLIC GLAZING ON DOOR. FIRE EXTINGUISHER CABINETS ARE SUPPLIED BY WAWA AND INSTALLED BY GENERAL CONTRACTOR. ONE PER MPD ISLAND. SEE DETAILS CA2 SHEET FOR REQUIRED MOUNTING HEIGHTS.
 3. FIRE EXTINGUISHERS SHALL HAVE A MINIMUM UL RATING OF 4A-60-B-C (HIGH FLOW), FIRE EXTINGUISHERS TO COMPLY WITH NFPA 30A AND MEET OR EXCEED NFPA 10 CLASS B SPECIAL HAZARD FIRE PROTECTION RECOMMENDATIONS. FIRE EXTINGUISHERS ARE SUPPLIED BY WAWA AND INSTALLED BY PETROLEUM CONTRACTOR. ONE PER MPD ISLAND.
 4. FIRE EXTINGUISHER SIGNS PROVIDED AND INSTALLED BY WAWA. SEE DETAIL THIS SHEET FOR REQUIRED MOUNTING HEIGHT.
 5. WARNING SIGNS SHALL BE PROVIDED BY WAWA AND INSTALLED BY THE PETROLEUM CONTRACTOR AT EACH MPD ISLAND. WARNING SIGNS (NFPA 30A 9.2.5.4 SIGNS) SHALL INCLUDE BUT NOT BE LIMITED TO:
 - a. NO SMOKING.
 - b. STOP ENGINE.
 - c. UNLAWFUL TO DISPENSE GASOLINE INTO UNAPPROVED CONTAINERS.
 6. LOCATION OF TRASH UNITS AND RECYLE UNITS SHALL BE AS SHOWN ON FLOOR PLAN. LEVEL RECEPTACLES WITH ADJUSTABLE LEVELERS AND ANCHOR TO CONCRETE SURFACE USING (2) 3/8" X 3 1/2" WEDGE ANCHORS PER UNIT. UNITS ARE FURNISHED AND INSTALLED BY WAWA.
 7. LOCATION OF SPILL KIT VALETS SHALL BE AS SHOWN ON FLOOR PLAN. ANCHOR TO CONCRETE SURFACE WITH ANCHOR BOLTS AND WING NUT FASTENERS. SPILL KIT VALETS ARE SUPPLIED BY WAWA AND INSTALLED BY PETROLEUM CONTRACTOR.
 8. VERIFY IF MUSIC IS ACCEPTED OR REQUIRED WITH WAWA REAL-ESTATE ENGINEER AND PROJECT MANAGER. SEE SHEET CE1 ELECTRICAL CANOPY PLANS, DETAILS, AND SCHEDULES FOR MUSIC INSTALLATION REQUIREMENTS. MUSIC SHALL BE INSTALLED BY THE PETROLEUM CONTRACTOR.
 9. VERIFY CANOPY CONFIGURATION ON FINAL SITE PLAN.
 10. ALL METAL AND ALUMINUM TRIM SHALL MATCH ATAS #26 BONE WHITE UNLESS NOTED OTHERWISE (U.N.O.).



20 ACCESS PANEL DETAIL
CA1 3" = 1'-0"



19 BASE DETAIL
CA1 3" = 1'-0"



18 SIGN MOUNTING DETAIL
CA1 3" = 1'-0"

Order Plans @

WWW.LDLine.com

1925 Prospect Ave.
Owensboro, KY 40314
(407) 668-1100
(407) 668-9101
www.ld-line.com

4
Chahaci & Peterson
Architects Engineers Planners

CLIENT NAME
WAWA
280 W. BALTIMORE PIKE
WAWA, PA 19063

PROJECT NAME
STRAIGHT 6 GAS CAN, 2018 01-MA
STORE #PHM - 8647
PARRHAM RD. & THREE CHOFT RD.
HENRICHO, VA

Revision Schedule	No.	Description	Date
	A	PERMIT SET	09/11/2019
	A	REV 2018.01	01/28/2019
		BID SET	01/28/2019

PROJECT NO.
2180130
DATE
09-21-2018
DRAWN
OR
CHECKED
RS

CA1