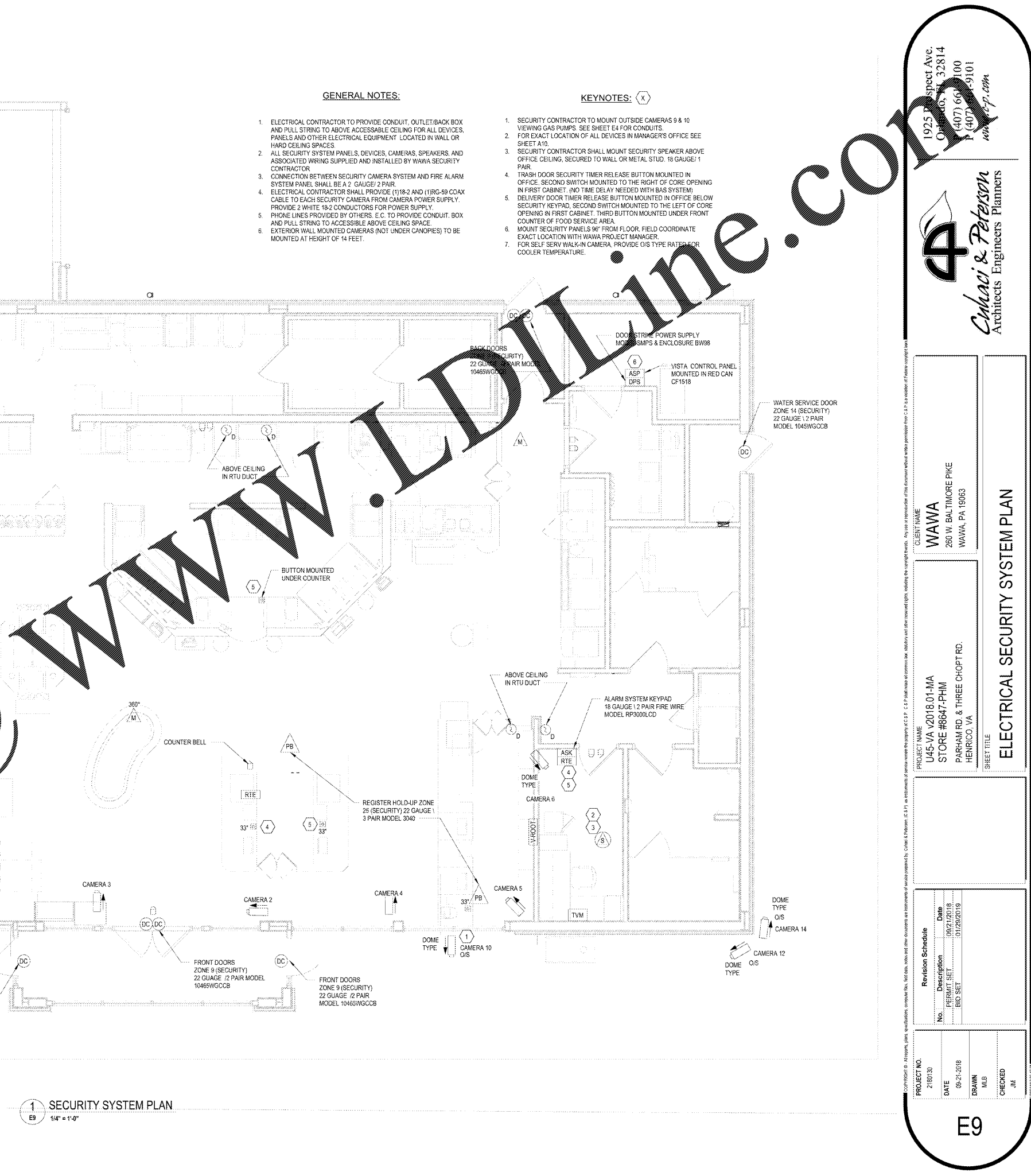


Order Plans @



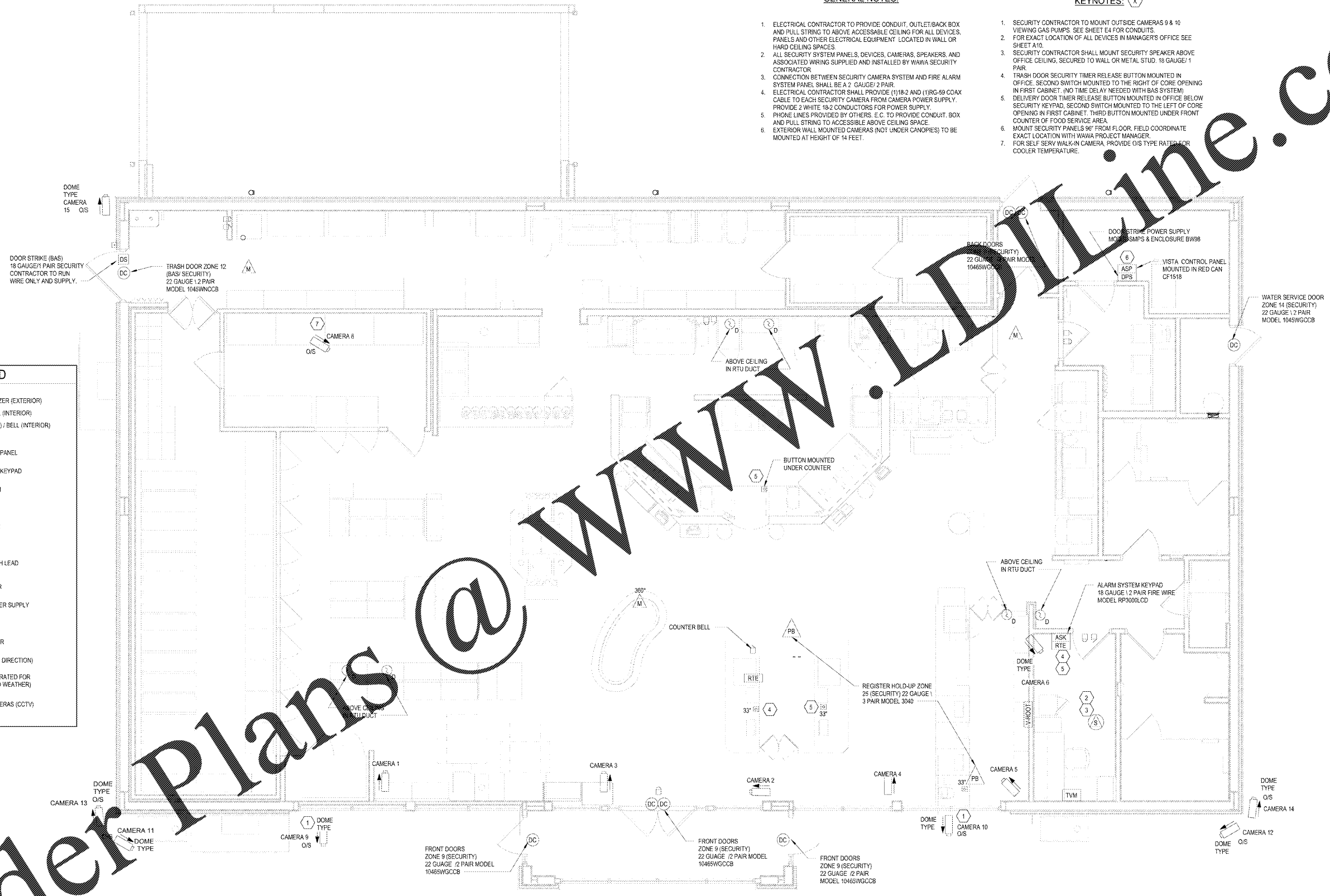
**GENERAL NOTES:**

1. ELECTRICAL CONTRACTOR TO PROVIDE CONDUIT, OUTLET/BACK BOX AND PULL STRING TO ABOVE ACCESSIBLE CEILING FOR ALL DEVICES, PANELS AND OTHER ELECTRICAL EQUIPMENT LOCATED IN WALL OR HARD CEILING SPACES.
2. ALL SECURITY SYSTEM PANELS, DEVICES, CAMERAS, SPEAKERS, AND ASSOCIATED WIRING SUPPLIED AND INSTALLED BY WAWA SECURITY CONTRACTOR.
3. CONNECTION BETWEEN SECURITY CAMERA SYSTEM AND FIRE ALARM SYSTEM PANEL SHALL BE A 2 GAUGE / 2 PAIR.
4. ELECTRICAL CONTRACTOR SHALL PROVIDE (1)18-2 AND (1)18-2 COAX CABLE TO EACH SECURITY CAMERA FROM CAMERA POWER SUPPLY. PROVIDE 2 WHITE 18-2 CONDUCTORS FOR POWER SUPPLY.
5. PHONE LINES PROVIDED BY OTHERS. E.C. TO PROVIDE CONDUIT, BOX AND PULL STRING TO ACCESSIBLE ABOVE CEILING SPACE.
6. EXTERIOR WALL MOUNTED CAMERAS (NOT UNDER CANOPIES) TO BE MOUNTED AT HEIGHT OF 14 FEET.

**KEYNOTES:** (X)

1. SECURITY CONTRACTOR TO MOUNT OUTSIDE CAMERAS 9 & 10 VIEWING GAS PUMPS. SEE SHEET E4 FOR CONDUITS.
2. FOR EXACT LOCATION OF ALL DEVICES IN MANAGER'S OFFICE SEE SHEET A10.
3. SECURITY CONTRACTOR SHALL MOUNT SECURITY SPEAKER ABOVE OFFICE CEILING, SECURED TO WALL OR METAL STUD. 18 GAUGE / 1 PAIR.
4. TRASH DOOR SECURITY TIMER RELEASE BUTTON MOUNTED IN OFFICE. SECOND SWITCH MOUNTED TO THE RIGHT OF CORE OPENING IN FIRST CABINET. (NO TIME DELAY NEEDED WITH BAS SYSTEM)
5. DELIVERY DOOR TIMER RELEASE BUTTON MOUNTED IN OFFICE BELOW SECURITY KEYPAD. SECOND SWITCH MOUNTED TO THE LEFT OF CORE OPENING IN FIRST CABINET. THIRD BUTTON MOUNTED UNDER FRONT COUNTER OF FOOD SERVICE AREA.
6. MOUNT SECURITY PANELS 96" FROM FLOOR. FIELD COORDINATE EXACT LOCATION WITH WAWA PROJECT MANAGER.
7. FOR SELF SERV WALK-IN CAMERA. PROVIDE O/S TYPE RATED FOR COOLER TEMPERATURE.

LEGEND	
(B)	PUSH BUTTON BUZZER (EXTERIOR)
(B)	PUSH BUTTON BELL (INTERIOR)
(B)	BUZZER (EXTERIOR) / BELL (INTERIOR)
(D)	CHIME
ASP	SECURITY SYSTEM PANEL
ASK	SECURITY SYSTEM KEYPAD
V-ROOT	PETROLEUM ALARM
DC	DOOR CONTACT
M	MOTION DETECTOR
PB	PANIC BUTTON
PB	PANIC BUTTON WITH LEAD
S	SECURITY SPEAKER
DPS	DOOR STRIKE POWER SUPPLY
DS	DOOR STRIKE
RTE	REQUEST TO ENTER
CAMERA	CAMERA (SHOWING DIRECTION)
CAMERA	CAMERA (OUTSIDE RATED FOR TEMPERATURE AND WEATHER)
O/S	MONITOR FOR CAMERAS (CCTV)



1 SECURITY SYSTEM PLAN  
1/4" = 1'-0"

1925 Prospect Ave.  
Owensboro, KY 40301  
(407) 668-1100  
(407) 668-9101  
www.l-d-line.com

**LD**  
**Chahaci & Peterson**  
Architects & Planners

CLIENT NAME  
**WAWA**  
280 W. BALTIMORE PIKE  
WAWA, PA 19083

PROJECT NAME  
**U45-VA V2018 01-MA**  
**STORE #6647-PIHM**  
PARRHAM RD. & THREE CHOPT RD.  
HENRICO, VA

Revision Schedule	
No.	Date
1	09/21/2018
2	01/29/2019
Description	
1	PERMIT SET
2	BID SET

PROJECT NO.	2180133
DATE	05-21-2018
DRAWN	M.B.
CHECKED	J.M.

E9