

7 GENERATOR CONNECTION BOX ELEVATION
E6 NOT TO SCALE

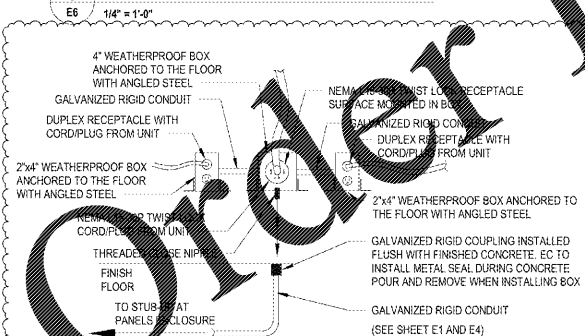
ELECTRICAL ROOM ELEVATION NOTES:

- CONDUIT LAYOUT PLAN SHOWN ON PLAN HAS PROVISIONS FOR 10 DISPENSERS. THE ACTUAL NUMBER OF CONDUITS REQUIRED WILL BE DEPENDENT ON THE CANOPY CONFIGURATION, AND ACTUAL NUMBER OF DISPENSERS INSTALLED. IF FEWER DISPENSERS ARE INSTALLED, AND THEREFORE SUFFICIENT SPACE EXISTS, THE CONDUITS ARE TO BE INSTALLED IN A SINGLE ROW.
- NOT USED.
- SERVICE CONNECT AND METER CABINET ARE SHOWN FOR ILLUSTRATIVE PURPOSES ONLY. REMOVE C.T. CABINET AS INDICATED ON SINGLE LINE DIAGRAM IS PREFERRED INSTALLATION.
- ALL SPARE CONDUITS WHICH TRAVERSE THE HAZARDOUS AREA SHOULD BE PACKED WITH MINERAL FIBER FOLLOWED WITH DUCT SEAL, AND THEN SEALED WITH A THREADED PLUG OR CAP AS APPROPRIATE FOR THE SPECIFIC CONFIGURATION AT EACH END OF THE CONDUIT.
- PANEL CC-4 AND REQUIRED CONDUIT SHALL BE PROVIDED BY BAS CONTRACTOR.
- PANEL JACE AND REQUIRED CONDUIT SHALL BE PROVIDED BY BAS CONTRACTOR.
- JUNCTION BOX, RECEPTACLES, AND ASSOCIATED CONDUIT TO HILL PHOENIX PANEL SHALL BE PROVIDED BY ELECTRICAL CONTRACTOR. JUNCTION BOX SHALL BE SURFACE MOUNTED.
- PROVIDE A LABEL ON PANELS RPD AND RFG STATING "GASOLINE EQUIPMENT ONLY. DO NOT INSTALL ANY ADDITIONAL CIRCUITS".
- PROVIDE A LABEL ON PANEL RPU STATING "EQUIPMENT ONLY. DO NOT INSTALL ANY ADDITIONAL CIRCUITS".

GASOLINE CONDUIT REQUIREMENTS:

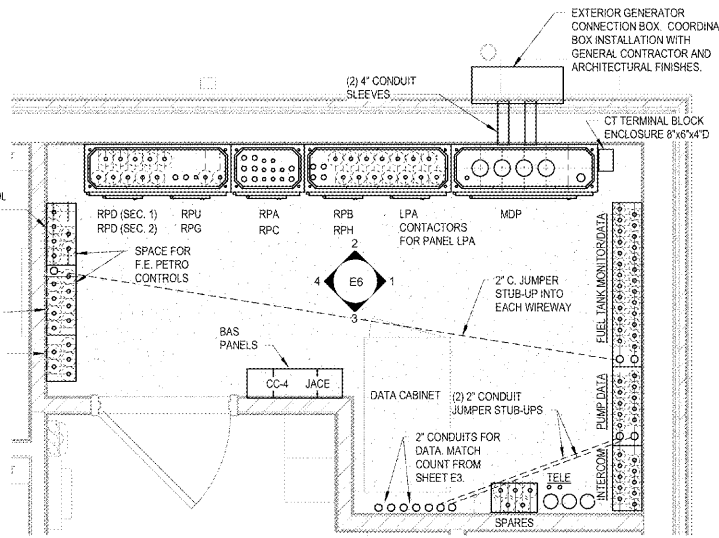
- 1" GRC TO EACH CANOPY COLUMN FOR INTERCOM/CAMERAS (COLUMN CLOSEST TO STORE)
- 1" GRC TO EACH CANOPY COLUMN FOR LIGHTING (COLUMN FURTHEST FROM STORE)
- 1" GRC TO EACH CANOPY COLUMN FOR INTERCOM/CAMERAS (COLUMN FURTHEST FROM STORE - DOUBLE STACK)
- 3/4" GRC TO EACH DISPENSER (1 POWER, 1 DATA, 1 MUSIC)
- 3/4" GRC TO EACH DISPENSER (FUEL-TANK MONITOR SENSOR)
- 1" GRC TO EACH TANK CONTAINMENT UNIT, F.E. PETRO POWER (1 POWER, 1 SPARE)
- 3/4" GRC TO EACH TANK CONTAINMENT UNIT, (FUEL-TANK MONITOR MAGNETIC PROBE)
- 3/4" GRC TO EACH TANK CONTAINMENT UNIT, (FUEL-TANK MONITOR SENSOR)
- 3/4" GRC TO EACH TANK CONTAINMENT UNIT, (FUEL-TANK MONITOR MULTI-PORT FILL SUMP)
- 3/4" GRC TO EACH TANK CONTAINMENT UNIT, (FUEL-TANK MONITOR BRINE INTERSTITIAL RESERVOIR)
- 1" GRC TO OVERFILL ALARM, (ON VENT STACK)
- 1" GRC TO VENT STACK (SPARE)

8 GASOLINE CONDUIT REQUIREMENTS
E6 1/4" = 1'-0"

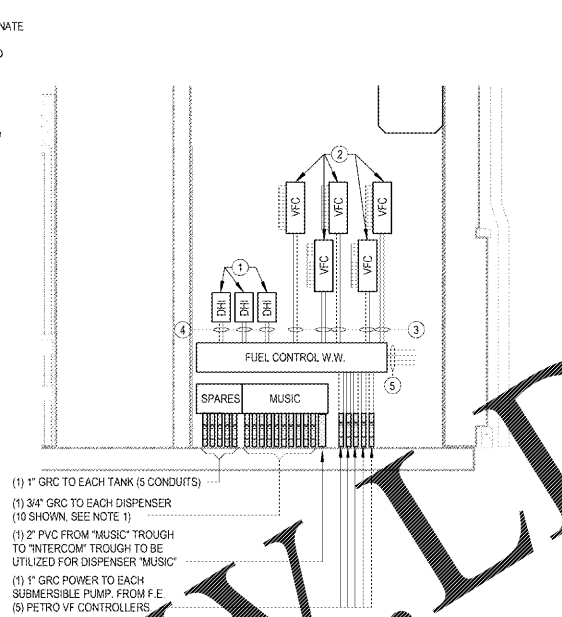


9 HOT FOOD TABLE OUTLET
E6 1/4" = 1'-0"

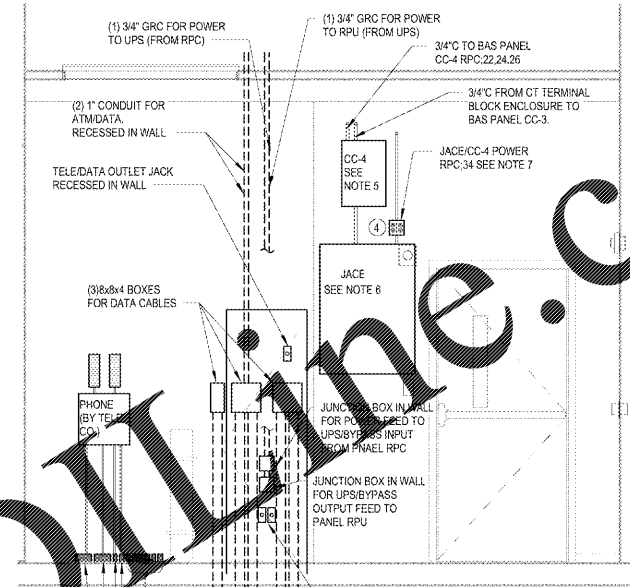
VERIFY THAT CONNECTION BOX MANUFACTURER HAS PROVIDED PER NEC 702.7(C) A SIGN INSIDE OR OUTSIDE COVER THAT STATES "WARNING: FOR A CONNECTION OF A NONSEPARATELY DERIVED (FLOATING NEUTRAL) SYSTEM ONLY". PROVIDE SIGN IF REQUIRED.



5 ELECTRICAL ROOM PLAN
E6 NOT TO SCALE



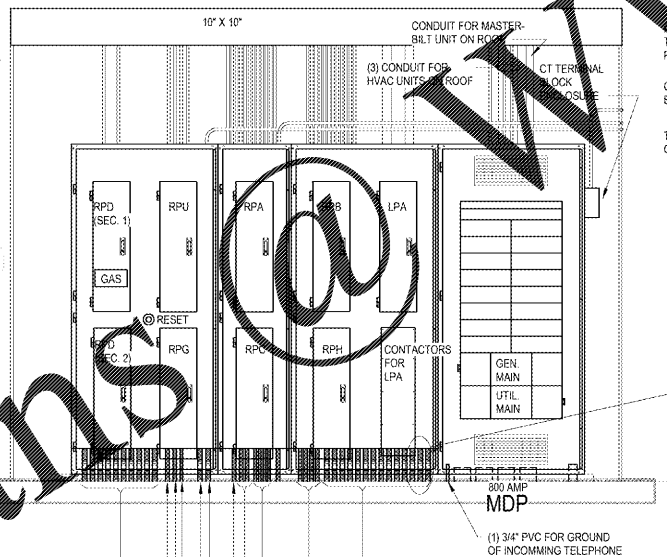
4 WEST
E6 NOT TO SCALE



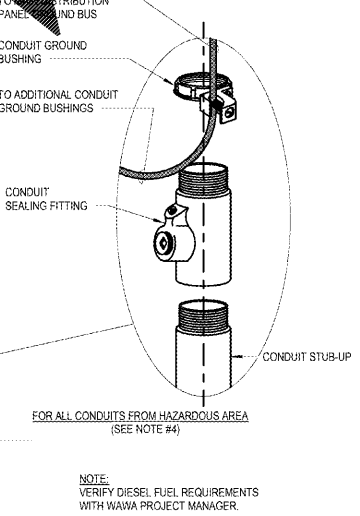
3 SOUTH
E6 NOT TO SCALE

ELEVATION FUEL NOTES NORTH & WEST:

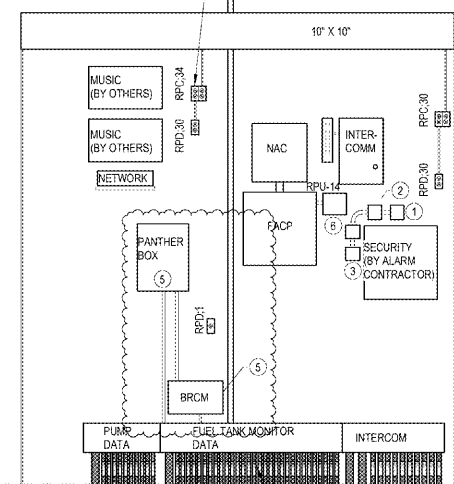
- F.E. PETRO DHI RELAYS (TYP) (BY GASOLINE CONTRACTOR)
- F.E. PETRO VF CONTROLLERS (TYP) (BY GASOLINE CONTRACTOR)
- (5) 1" POWER TO F.E. PETRO VF CONTROLLERS (FROM PANEL RFG)
- (3) 1" POWER TO F.E. PETRO DHI RELAYS (FROM PANEL RPD & SWITCH LEGS FROM DISPENSERS)
- (1) 1 1/2" C POWER TO PANEL RFG AND (1) 1 1/2" C POWER TO PANEL RPD



2 NORTH
E6 NOT TO SCALE



(TYP. FOR ELECT. RM.) ALL RECEPTACLES BY ELEC. CONTRACTOR. WAIT TO SURFACE MOUNT RECEPTACLES UNTIL EQUIPMENT IS PLACED. (COORDINATE)



NOTES EAST & SOUTH:

- DELIVERY DOOR LOCK POWER SUPPLY RPC:32.
- DOOR CHIMES XFMR RPC:32.
- E.C. TO SUPPLY POWER TO LOW VOLTAGE TRANSFORMER FOR BELLBUZZER & CHIMES (COORDINATE WITH ALARM CONTRACTOR)
- JACE POWER RPC:34 SEE NOTE 7.
- BY PETRO CONTRACTOR AS REQUIRED.
- PS3000 RECEIPT MTD ON RIGHT SIDE

- (1) 3/4" GRC TO EACH DISPENSER (10 SHOWN, SEE NOTE 1) PUMP DATA
- (1) 3/4" GRC TO EACH DISPENSER (10 SHOWN, SEE NOTE 1) FUEL TANK MONITOR DATA
- (1) 1" GRC TO ISLAND FOR INTERCOM/CAMERAS/MUSIC (10 SHOWN, SEE NOTE 1)
- (3) 2" PVC INTERCOM TO CHECKOUT
- (1) 2" PVC FROM "INTERCOM" TROUGH TO "MUSIC" TROUGH TO BE UTILIZED FOR DISPENSER "MUSIC"

ALL SEAL OFF FITTINGS TO BE 1" A.F.F. MAINTAIN 12" A.F.F. TO BOTTOM OF TROUGH AS SHOWN. FOR ALL CONDUITS RUN THROUGH HAZARDOUS AREAS BOTH ENDS OF CONDUITS MUST HAVE SEAL OFF FITTINGS INSTALLED AS FIRST FITTING ABOVE FLOOR. SEE NOTE 4, REFER TO NEC 501-5 (TYPICAL)

1 EAST
E6 NOT TO SCALE

1925 Prospect Ave.
Owensboro, KY 40301
(407) 698-4100
(407) 698-9101
www.c-p.com

4
Chauci & Peterson
Architects Engineers Planners

CLIENT NAME
WAWA
280 W. BALTIMORE PIKE
WAWA, PA 19063

PROJECT NAME
U45-VA V2018 01-NA
STORE #6647-PMH
PARRHAM RD. & THREE CHOPT RD.
HENRICO, VA

Revision	Number	Date	Description
1	PERMIT SET	09/21/2018	
2	REV V2018 01	01/28/2019	
3	BID SET	01/28/2019	

PROJECT NO. 2180133
DATE 09-21-2018
DRAWN MLB
CHECKED JIM