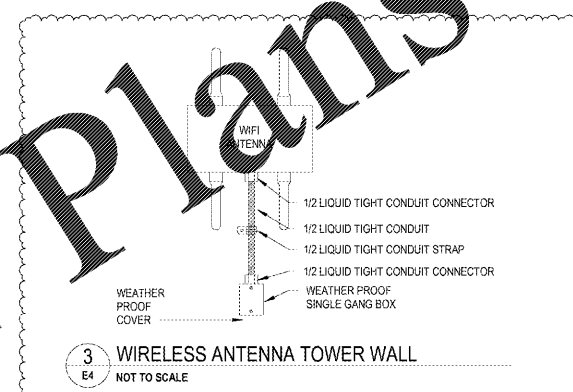
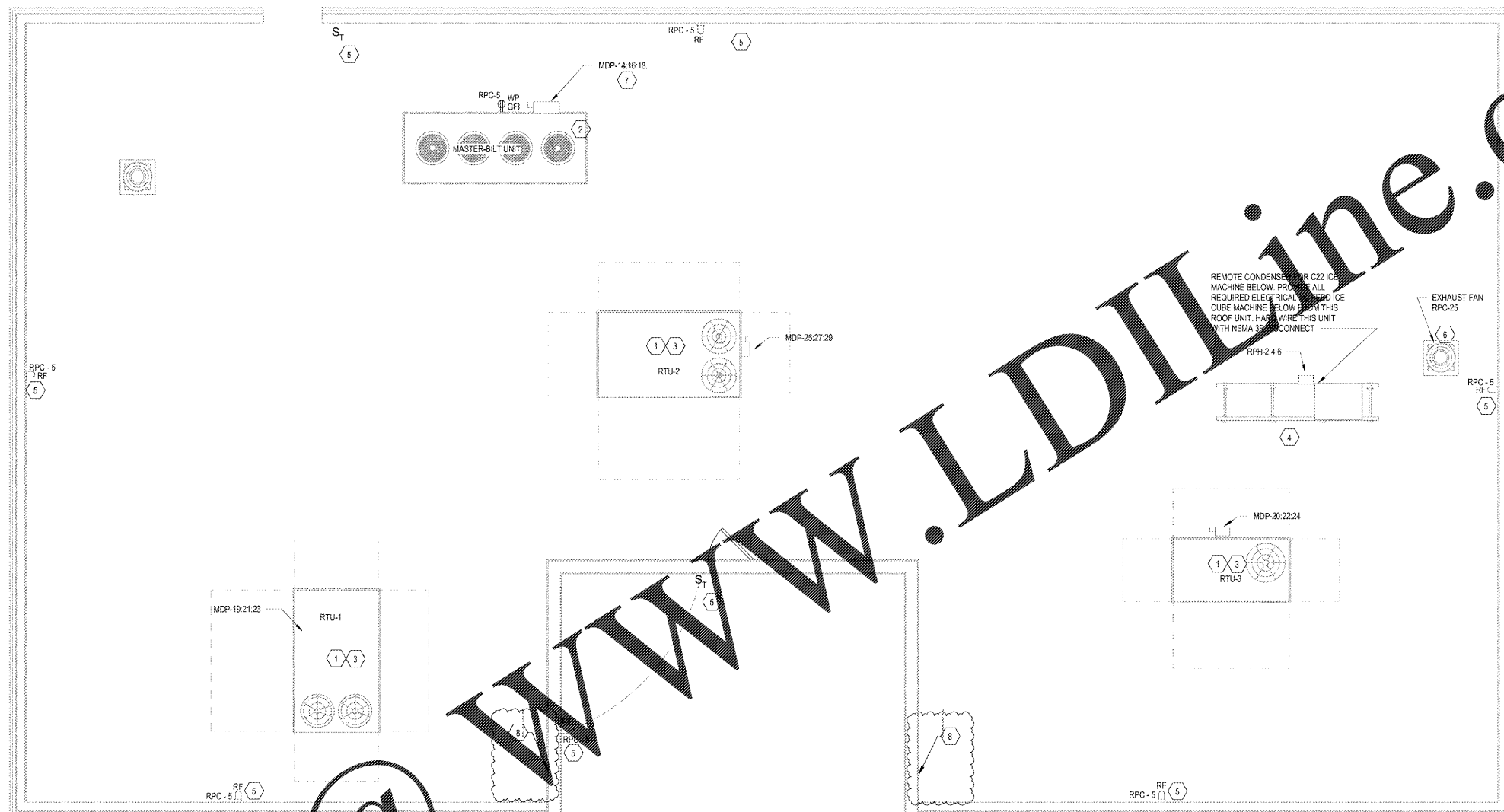


GENERAL NOTES:

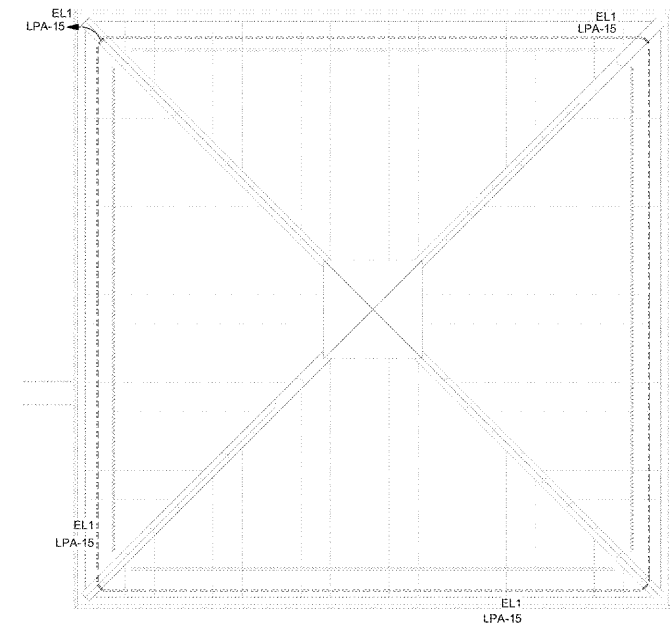
- E.C. TO LABEL EACH RECEPTACLE AND EXHAUST FAN SWITCH WITH CIRCUIT NUMBER AND INTENDED USE.
- ALL GFI RECEPTACLES SHALL BE DUPLEX RECEPTACLES U.N.O. WITH LED INDICATOR LIGHT. LEVITON #6898-W OR APPROVED EQUAL. NO FEED THRU PROTECTION PERMITTED. SEE DETAIL 2E1.
- WHERE WEATHERPROOF COVERS ARE DENOTED, PROVIDE 'WHILE-IN-USE' COVERS. ALL RECEPTACLES SHALL BE MOUNTED AT 18" AFF UNLESS OTHERWISE NOTED.
- E.C. TO COORDINATE INSTALLATION OF ALL ROOF MOUNTED LIGHTING FIXTURES WITH ROOFING CONTRACTOR TO PROVIDE A STRUCTURALLY SOUND AND WEATHERPROOF 'LEAK FREE' INSTALLATION.

KEYNOTES: (X)

- MAIN DISCONNECT PROVIDED WITH UNIT. CONVENIENCE OUTLET RECEPTACLE PROVIDED WITH UNIT. CIRCUIT OUTLET TO RPC-5.
- E.C. SHALL PROVIDE COMPLETE CONDUIT/CONDUCTOR SYSTEM FROM MDP TO UNIT VIA DISCONNECT.
- E.C. SHALL PROVIDE COMPLETE CONDUIT/CONDUCTOR SYSTEM FROM MDP TO SINGLE POINT CONNECTION AT UNIT.
- PROVIDE SUPPORT RACK ATTACHED TO UNIT AS REQUIRED TO MOUNT ELECTRICAL EQUIPMENT.
- E.C. SHALL PROVIDE (5) LIGHTING FIXTURES (BASIS OF DESIGN - VAPOLET VFN420UW-1P-PG). PROVIDE WEATHERPROOF SWITCH WITH TIMER NEAR ACCESS LADDER/DOOR. FIXTURES AND SWITCH TO BE SURFACE MOUNTED 6" BELOW TOP OF WALL OR 48" AFF IN TOWER. PROVIDE COMPLETE CONDUIT/CONDUCTOR SYSTEM FOR FIXTURES AND SWITCH BACK TO POWER PANEL IN ELECTRICAL ROOM.
- E.C. SHALL PROVIDE NEMA 3R MAIN DISCONNECT IF NOT PROVIDED WITH UNIT AND COMPLETE CONDUIT/CONDUCTOR SYSTEM FROM PANELBOARD TO THE UNIT.
- ELECTRICAL POWER TO MASTER-BILT UNIT TO RUN THROUGH PROVIDED GOOSENECK.
- NEK-1 TO UNIT, LAMP, LAMP CREASE, SEPARATE ROOF PENETRATION. ELECTRICAL CONTRACTOR SHALL REFER TO DETAIL DIES FOR INSTALLATION OF ANTENNAS ON TOWER WALL.



1 ELECTRICAL ROOF PLAN
E4 1/4" = 1'-0"



Order Plans @

WWW.LDILINE.COM

1925 Prospect Ave.
Owensboro, KY 40314
(407) 668-1100
(407) 668-9101
www.l-d-i.com

Chalaci & Peterson
Architects Engineers Planners

CLIENT NAME WAWA	280 W. BALTIMORE PIKE WAWA, PA 19083
PROJECT NAME U45-VA V2018 01-MA STORE #8647-PIHM	PARRHAM RD. & THREE CHOFT RD. HENRICO, VA

No.	Description	Date
A	PERMIT SET	09/21/2018
A	REV V2018 01	01/28/2019
A	BID SET	01/28/2019

E4