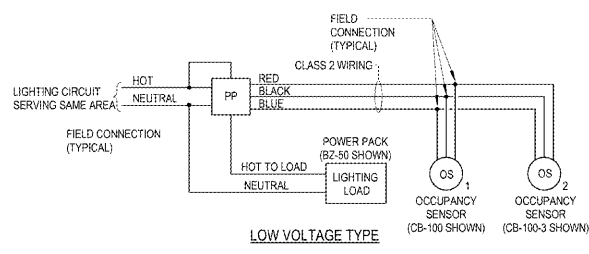


KEYNOTES:

- ALL LIGHTING BRANCH CIRCUITING SHALL BE ROUTED ABOVE CEILING. EXPOSED CONDUIT OR SEAL-TIGHT IS NOT ACCEPTED.
- E.C. TO COORDINATE EXACT LOCATION OF J-BOXES WITH SIGN INSTALLER.
- NOT USED.
- CONNECT CIRCUITING FOR TYPE "DLIE" AHEAD OF LIGHTING CONTACTOR SWITCHING.
- CIRCUITING AND CONNECTION FROM JUNCTION BOX TO EQUIPMENT LIGHTING SHALL BE THE RESPONSIBILITY OF THE GENERAL CONTRACTOR. E.C. TO LEAVE 18" COIL OF WIRE IN CEILING SPACE FOR THIS CIRCUIT.
- PROVIDE MOTION DETECTOR OCCUPANCY SENSORS WITH DETECTION DISTANCE RATINGS TO ALLOW THE SENSORS TO FUNCTION PROPERLY AT THE LOCATIONS SHOWN ON THIS PLAN.
- SWITCH TO CONTROL LIGHTS IN SELF-SERV WALK-IN COOLER.
- PROVIDE SENSOR SWITCH (IP-CRM-104-L) OCCUPANCY SENSOR.
- FIXTURE SHALL BE SECURED TO WALL AT (2) POINTS TO PREVENT MOVEMENT/ROTATION.
- PROVIDE POWER TO THE EMERGENCY BALLAST OF THIS FIXTURE AHEAD OF ANY SWITCHING, DIRECT FROM BREAKER. CIRCUIT TO NORMAL FIXTURE BALLAST THROUGH LIGHTING CONTACTOR.
- ORIENT FIXTURE WITH MIRROR SIDE TOWARD WALL.
- WALL MOUNTED LIGHTED WAWA SIGN WITH DISCONNECT SWITCH (MILBERRY #30482, SINGLE POLE, 20 AMP), DISCONNECT SWITCH TO BE LOCATED WITHIN SITE OF SIGN, TRANSFORMER TO BE MOUNTED TO WALL ABOVE CEILING. SEE DETAIL #17 ON SHEET A11.1 FOR MOUNTING OF ELECTRICAL BOX AND SIGN.

ELECTRICAL NOTES:

- ELECTRICAL CONTRACTOR SHALL INSTALL LIGHTING FIXTURES AND LAMPS FURNISHED BY WAWA.
- NO SHARED NEUTRAL BETWEEN CIRCUITS SHALL BE PERMITTED.
- REFER TO PROJECT SPECIFICATIONS FOR EXTENT OF LIGHTING PRODUCT SPECIFICATIONS.
- LIGHTING FIXTURES SUPPORTED BY CEILING GRID SHALL ALSO BE SUPPORTED BY HANGWIRES. FIXTURES WEIGHING LESS THAN 10 LBS SHALL BE SUPPORTED BY (1) 12 GAUGE WIRE CONNECTED FROM FIXTURE TO STRUCTURE ABOVE. FIXTURES WEIGHING MORE THAN 10 LBS SHALL BE SUPPORTED BY (2) 12 GAUGE WIRES CONNECTED FROM OPPOSITE CORNERS OF THE FIXTURE TO THE STRUCTURE ABOVE. HANGWIRE CONNECTIONS SHALL MEET APPROVAL OF THE AHJ.

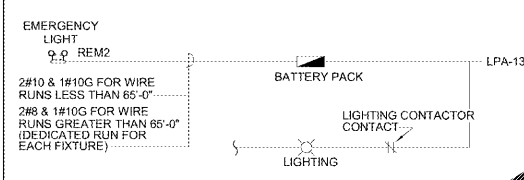


NOTES:

- KEEP CLASS 1 AND CLASS 2 WIRING SEPARATE. WHERE SEPARATION IS NOT POSSIBLE, USE A 600V INSULATED CABLE WITH A SHIELD FOR CLASS 2 WIRING. CONNECT THE SHIELD TO GROUND TO PROVIDE BETTER NOISE IMMUNITY.
- WIRE COLORS SHOWN ARE FOR REFERENCE ONLY BASED ON WATTSTOPPER OCCUPANCY SENSORS. REFER TO MANUFACTURER'S INSTRUCTION FOR ACTUAL WIRING INSTRUCTIONS.
- REFER TO LIGHTING SYMBOL LEGEND FOR OCCUPANCY SENSOR TYPES AND DESCRIPTION.
- ALL SENSORS SHALL BE INSTALLED IN THE LOCATIONS INDICATED ON LIGHTING PLAN.
- PASSIVE INFRARED SENSORS SHALL BE AIMED SO AS TO MAXIMIZE THE COVERAGE AND DETECTION OUTSIDE THE AREA TO BE CONTROLLED. ADJUST SENSITIVITY FOR INFRARED SENSORS TO MAXIMUM AND ADJUST DOWN AS NEEDED BASED ON FIELD CONDITIONS.
- WHENEVER POSSIBLE, SENSORS SHALL BE INSTALLED 6 FEET FROM AN AIR SUPPLY REGISTER AND ON A VIBRATION FREE SURFACE.
- INITIAL TIME DELAY SETTINGS FOR ALL SENSORS SHALL BE SET TO NOT LESS THAN 15 MINUTES.

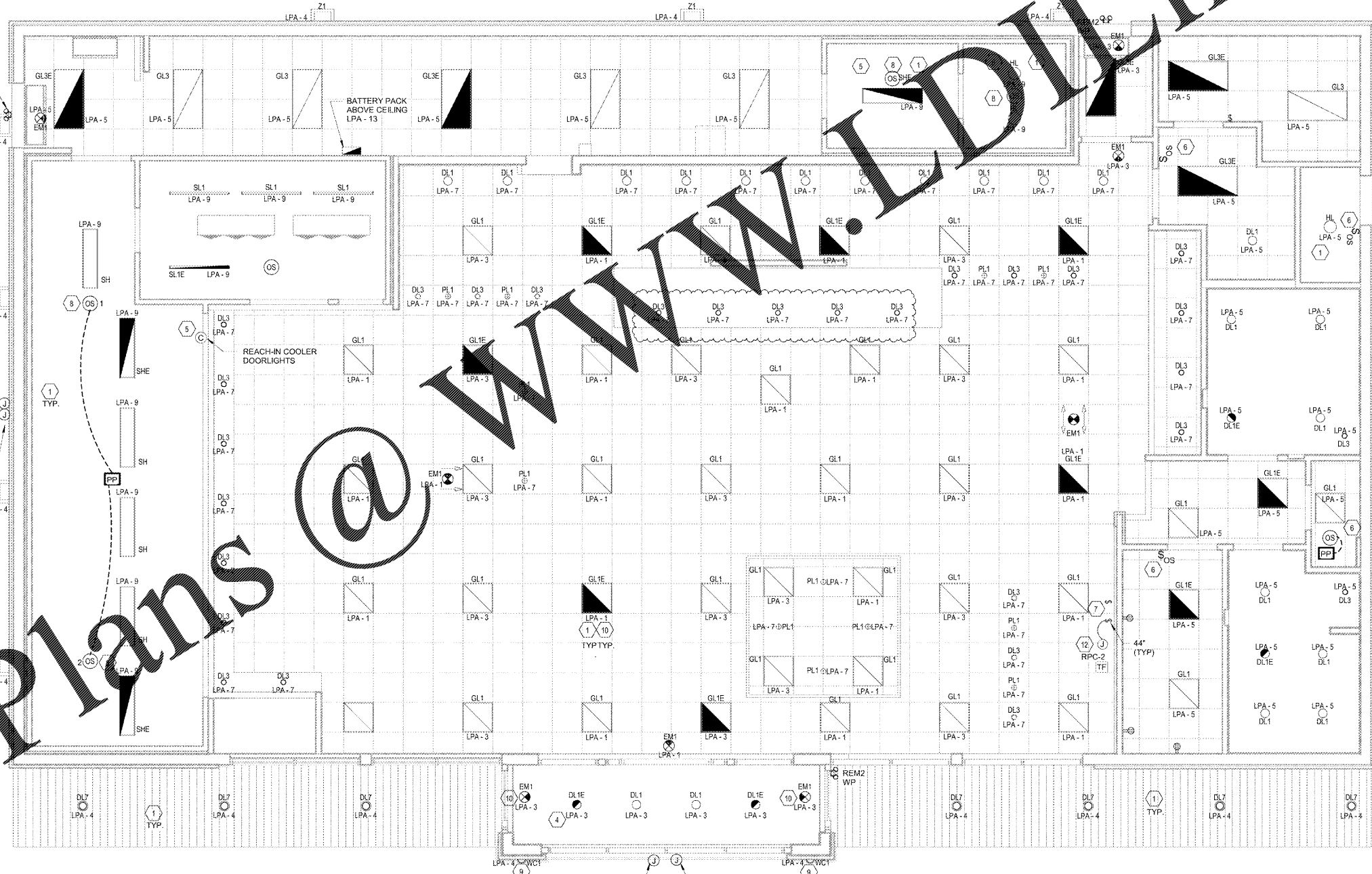
TYPE	SPECIFICATION
DL1	RECESSED 6" LED DOWNLIGHT WET LOCATION
DL1E	RECESSED 6" LED DOWNLIGHT WET LOCATION ELECTRONIC BALLAST AND EMERGENCY BALLAST
DL3	RECESSED 4" LED DOWNLIGHT WET LOCATION
DL7	RECESSED 6" LED DOWNLIGHT WET LOCATION WITH GOOF RING
EL1	WET LOCATION LED MODULES WITH REMOTE POWER SUPPLY - APPROXIMATELY 80 MODULE STRINGS
EM1	POLYCARBONATE EXIT SIGN
GL1	2X2 RECESSED LED DIRECT/INDIRECT
GL1E	2X2 RECESSED LED DIRECT/INDIRECT EMERGENCY BATTERY PACK
GL3	2X4 RECESSED LED DIRECT/INDIRECT
GL3E	2X4 RECESSED LED DIRECT/INDIRECT AND EMERGENCY POWER BATTERY
HL	LED VAPOR TIGHT JELLY JAR WITH GLASS GLOBE CAST GUARD
PL1	6" DIAMETER PENDANT WITH WHITE ACRYLIC DIFFUSER AND SCREW IN LED LAMP WITH ESCUTCHEON PLATE
REM2	WET LOCATION EMERGENCY (DUAL HEADS) FED FROM BATTERY PACK (SEE DIAGRAM THIS SHEET)
RF	WALL MTD LED WET LOCATION FIXTURE W/ GUARD (FOR USE IN ROOF POCKET, SEE DWG E4)
SH	GASKETED LED WRAP AROUND UL WET LABEL WITH LOW TEMPERATURE DRIVER
SHE	GASKETED LED WRAP AROUND UL WET LABEL WITH LOW TEMPERATURE DRIVER AND EMERGENCY BATTERY PACK
SL1	4" WET LOCATION SURFACE MOUNTED LINEAR LED
SL1E	4" WET LOCATION SURFACE MOUNTED LINEAR LED WITH BATTERY PACK
WC1	WALL MOUNTED EXTERIOR LED FIXTURE WEATHER-PROOF, UL WET LABEL
Z1	EXTERIOR WALL MOUNT LED, UL WET LABEL WALL PACK

BATTERY POWERED EMERGENCY LIGHTING DIAGRAM



SYMBOL LEGEND

- BATTERY UNIT TO MEET ALL STATE & LOCAL CODES. MOUNT TO WALL ABOVE CEILING AT LOCATION SHOWN ON PLAN.
- EXIT LIGHT - CEILING MOUNTED DOUBLE FACE
- EXIT LIGHT - CEILING MOUNTED SINGLE FACE
- EXIT LIGHT - WALL MOUNTED
- EMERGENCY REMOTE (DUAL)
- CEILING MOUNTED MOTION DETECTOR
- MOTION DETECTOR WITH OCCUPANCY SENSOR
- MOTION DETECTOR WITH OCCUPANCY SENSOR POWER PACK (WATTSTOPPER CAT# BZ-50 OR APPROX. EQUAL) (SET SENSOR TO 30 MINUTES SHUT OFF)
- WIRE COIL FOR FUTURE USE
- JUNCTION BOX, WALL MTD
- CEILING MTD
- SWITCH, 44" A/C
- 3 WAY SWITCH
- WALL MOUNTED MOTION DETECTOR
- MOTION DETECTOR WITH OCCUPANCY SENSOR (SET SENSOR TO 20 MINUTES SHUT OFF)
- SWITCH WITH TIME DELAY
- MUZAK SPEAKER WITH VOLUME CONTROL
- WALL MOUNT MUZAK SPEAKER WITH VOLUME CONTROL



1925 Prospect Ave.
Owensboro, KY 40366
(407) 668-1100
(407) 668-9101
www.e-p.com

Chalaci & Peterson
Architects Engineers Planners

CLIENT NAME
WAWA
280 W. BALTIMORE PIKE
WAWA, PA 19083

PROJECT NAME
U45-VA V2018.01-MA
STORE #8647-PHM
PARRHAM RD. & THREE CHOFT RD.
HENRICO, VA

Revision Schedule	No.	Description	Date
PERMIT SET	A	REV V2018.01	09/21/2018
BID SET	A	REV V2018.01	01/28/2019
			01/28/2019

Revision Schedule	No.	Description	Date
PERMIT SET	A	REV V2018.01	09/21/2018
BID SET	A	REV V2018.01	01/28/2019
			01/28/2019

Revision Schedule	No.	Description	Date
PERMIT SET	A	REV V2018.01	09/21/2018
BID SET	A	REV V2018.01	01/28/2019
			01/28/2019

E2