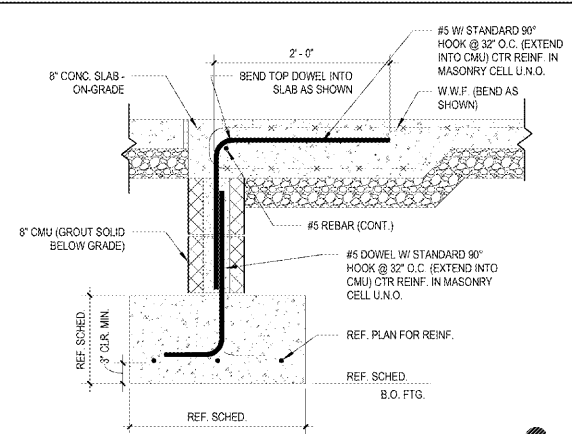
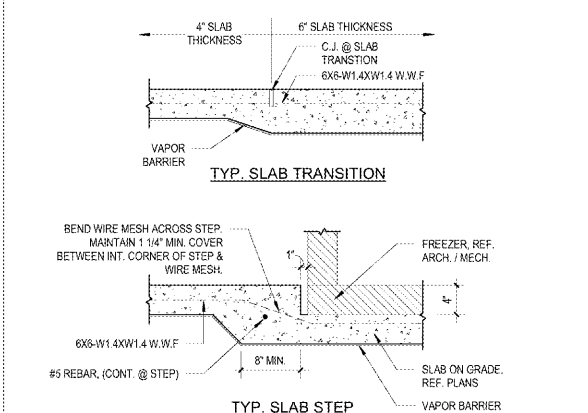


8 TYPICAL PEDESTAL
S7 3/4" = 1'-0"

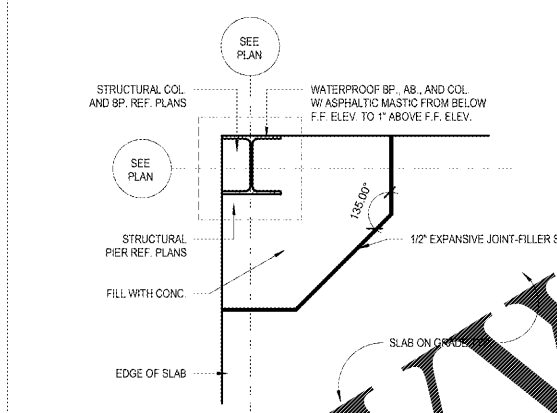


4 SLAB EDGE STOREFRONT AND DOORWAYS
S7 1" = 1'-0"

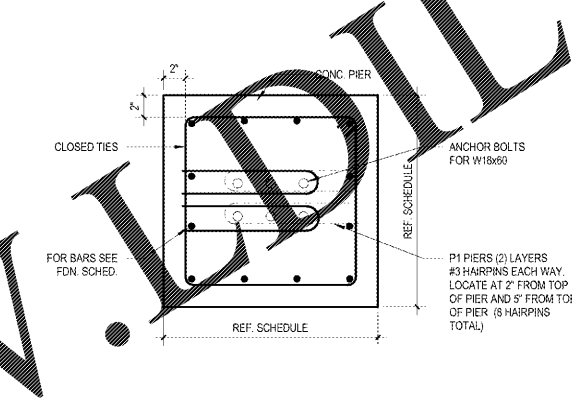
GENERAL SHEET NOTES:
1. SEE GENERAL NOTES AND SPECIFICATIONS FOR ADDITIONAL REQUIREMENTS NOT SHOWN HERE.
2. ALL CONTINUOUS REINFORCEMENT SHALL BE LAP SPICED AT CORNERS USING "L" BARS.



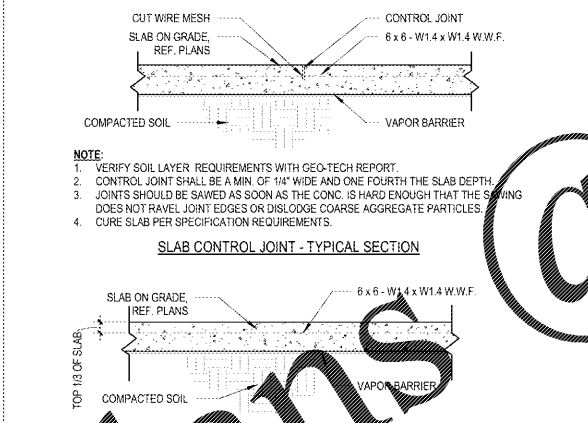
11 SLAB TRANSITION - TYPICAL
S7 1" = 1'-0"



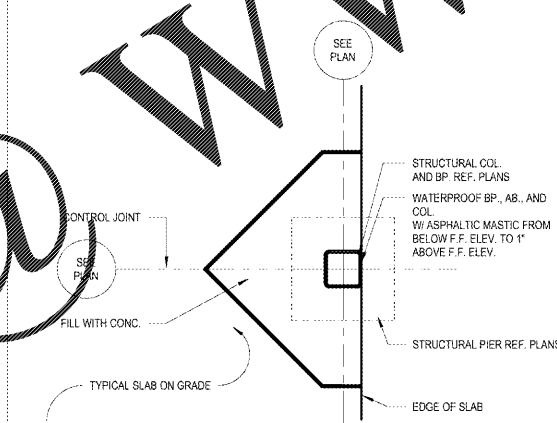
7 ISOLATION JOINT CORNER
S7 1" = 1'-0"



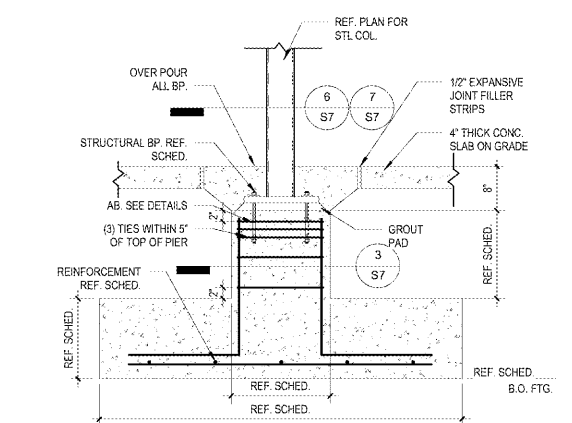
3 PIER SECTION
S7 1 1/2" = 1'-0"



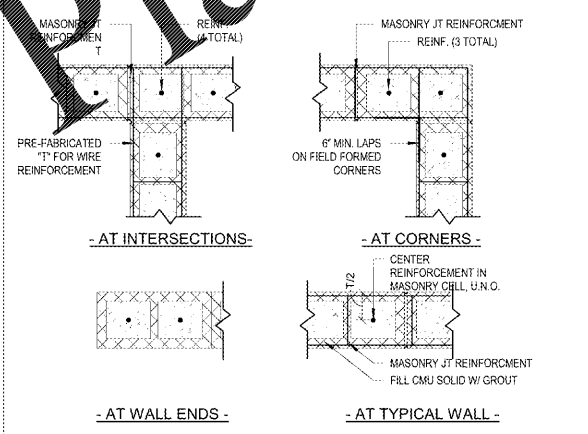
10 FOUNDATION DETAIL
S7 1" = 1'-0"



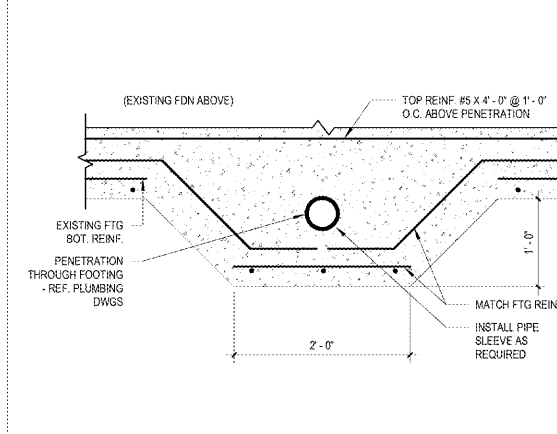
6 ISOLATION JOINT AT WALL
S7 1" = 1'-0"



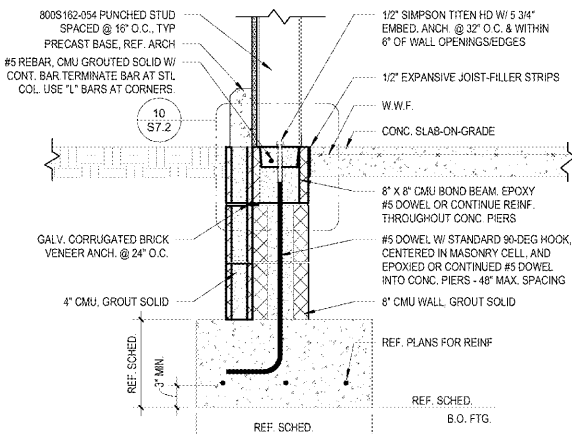
2 TYPICAL COLUMN FTG
S7 3/4" = 1'-0"



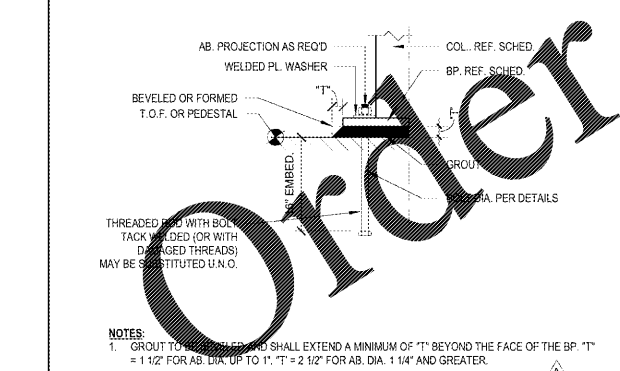
9 TYPICAL CMU DETAILS
S7 1" = 1'-0"



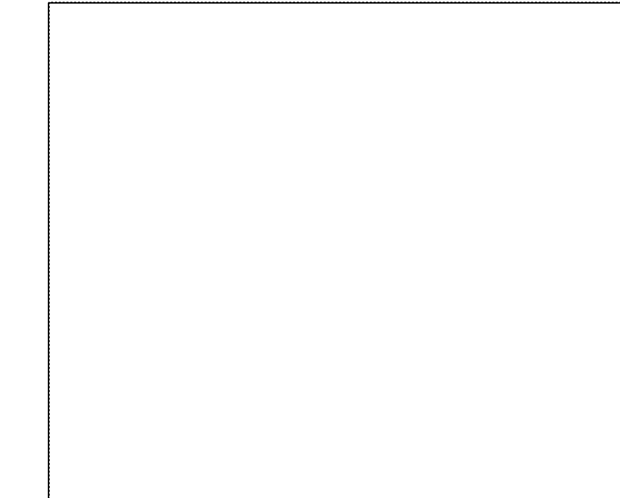
5 FOUNDATION STEP
S7 1" = 1'-0"



1 TYPICAL WALL AND FOOTING SECTION
S7 1" = 1'-0"



12 ANCHOR BOLT AND GROUT PLACEMENT DETAIL
S7 1 1/2" = 1'-0"



1925 Prospect Ave.
Owensboro, KY 40301
(407) 663-1100
(407) 663-9101
www.wall-line.com

Wall Line
Chhabri & Peterson
Architects Engineers Planners

CLIENT NAME: **WAWA**
260 W. BALTIMORE PIKE
WAWA, PA 19063

PROJECT NAME: **U45-VA v2018 01-MA STORE #6647 - PHM**
PARRAM RD & THREE CHOPT RD,
HENRICO, VA

FOUNDATION DETAILS

Revision Schedule	No.	Description	Date
2/18/13	1	PERMIT SET	09/21/2018
	A	REV. V2018.01	01/29/2019
		BID SET	01/29/2019

PROJECT NO. 7180130
DATE 09-21-2018
DRAWN RC
CHECKED JI

S7