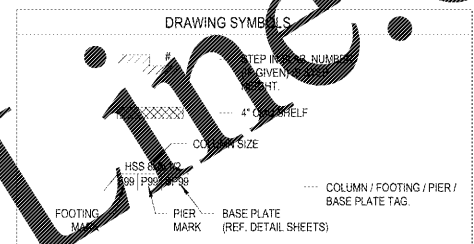


1925 Prospect Ave.  
 Oakton, VA 22124  
 (407) 663-1100  
 (407) 663-9101  
 www.c-p.com

**Chalaci & Peterson**  
 Architects Engineers Planners

- GENERAL SHEET NOTES:**
1. VERIFY FINAL LOCATIONS OF RECESSES AND THICKENED SLAB
  2. FOR ACTUAL ELEVATION (REF. ELEV. 0'-0" HEREIN)
  3. SEE GENERAL NOTES AND SPECIFICATIONS FOR SOIL, SOIL TREATMENT AND MOISTURE PROTECTION.
  4. FOR COLUMN BASE PLATES SEE DETAIL SHEETS



**FOUNDATION SCHEDULE**

MARK	LENGTH	WIDTH	THICKNESS	TOP REINF.	BOTTOM REINF.	ELEV. AT BOTTOM
F4.0	4'-0"	4'-0"	1'-6"	-	(5) #5 E.W.	-3'-6"
F8.5	8'-6"	8'-6"	2'-0"	-	(8) #7 E.W.	-4'-0"

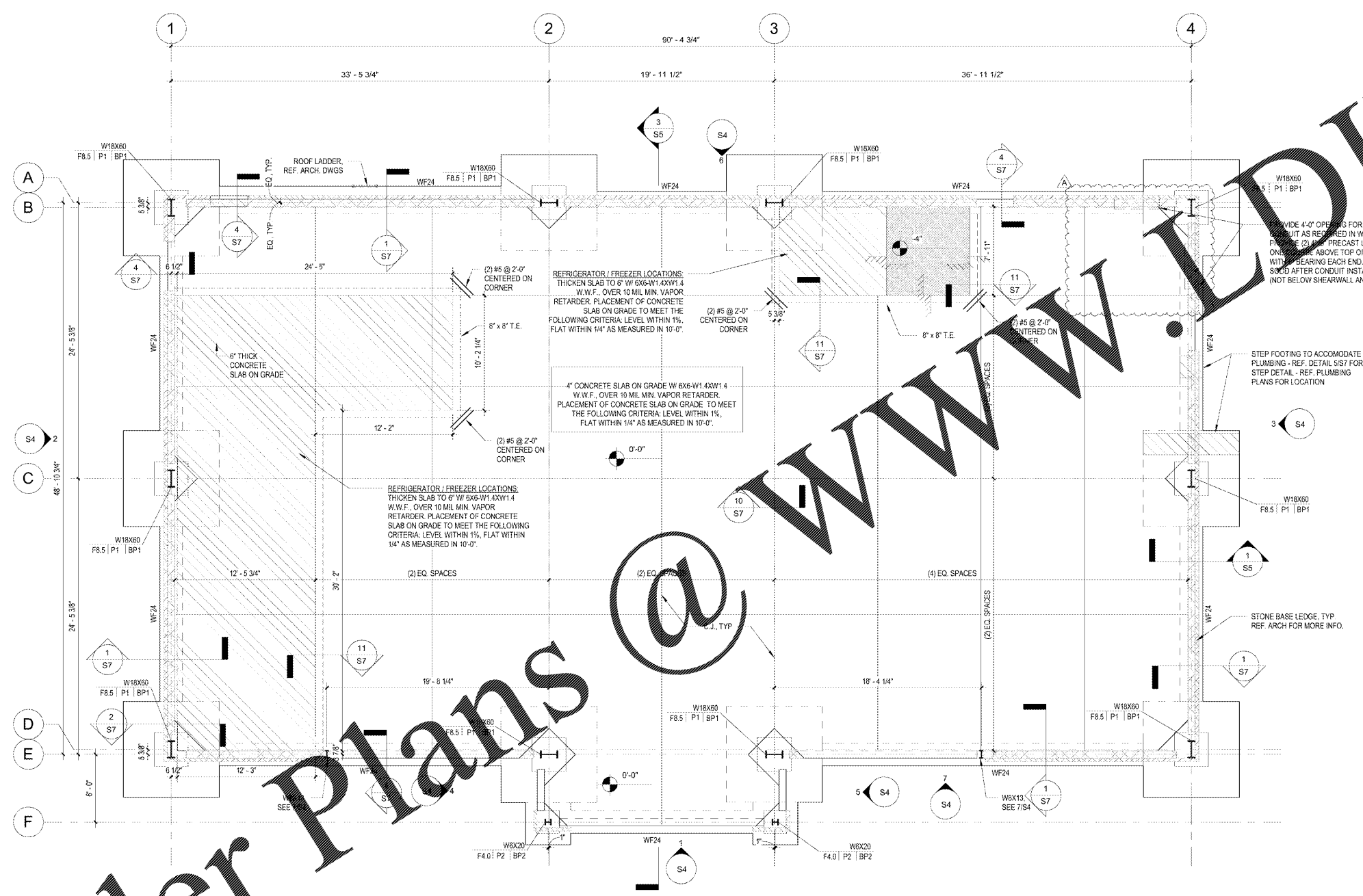
**WALL FOOTING SCHEDULE**

TYPE MARK	WIDTH	THICKNESS	REINF.	ELEV. AT BOTTOM
WF24	2'-0"	1'-6"	(3) #5 CONT. BOTTOM	-3'-8"

**CONCRETE PIER SCHEDULE**

MARK	SIZE	DEPTH	VERTICAL REINFORCEMENT	TIES
P1	36" X 36"	1'-4"	(12) #7 REBAR	#3 @ 6" O.C.
P2	24" X 24"	1'-4"	(12) #5 REBAR	#3 @ 6" O.C.

NOTE: P1 HAS (2) TIES SPACED 2' FROM TOP OF PIER. SEE SHEET S7



CLIENT NAME  
**WAWA**  
 260 W. BALTIMORE PIKE  
 WAWA, PA 19063

PROJECT NAME  
**U45-VA v2018.01-MA**  
**STORE #8647 - PHM**  
 PARHAM RD & THREE CHOPT RD,  
 HENRICO, VA

SHEET TITLE  
**FOUNDATION PLAN**

**Revision Schedule**

No.	Description	Date
1	PERMIT SET	09/21/2018
2	REV. v2018.01	01/29/2019
3	BID SET	01/29/2019

PROJECT NO.  
 2180130

DATE  
 09-21-2018

DRAWN  
 RC

CHECKED  
 JI

S2

Order Plans @ [www.wawadirect.com](http://www.wawadirect.com)