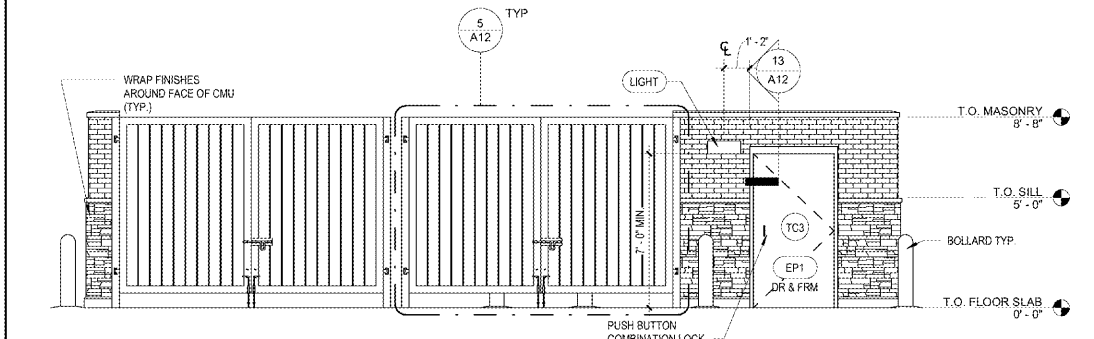
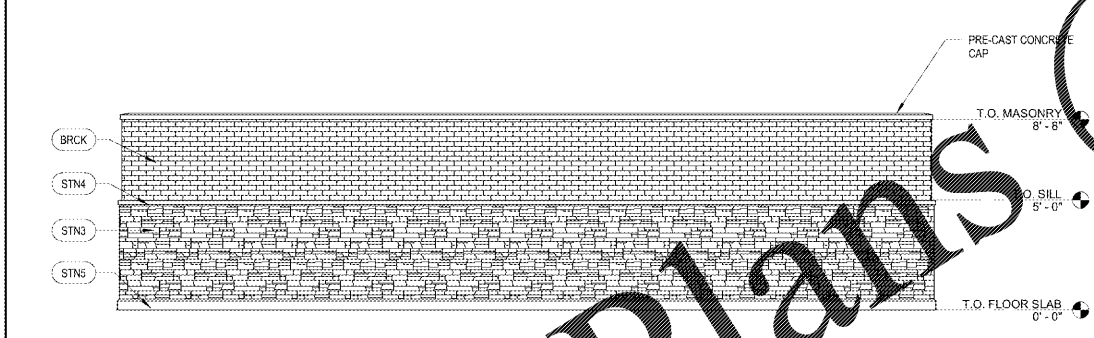


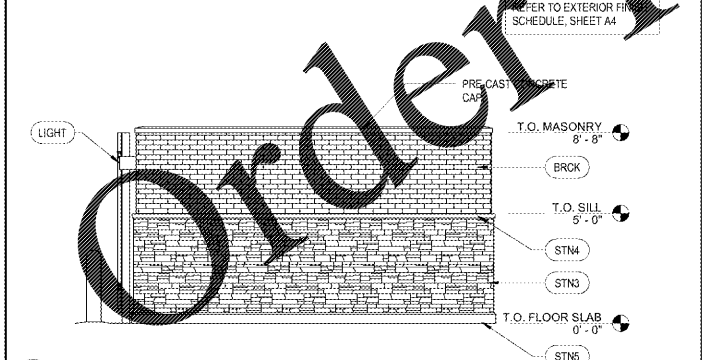
5 GATE ELEVATION  
A12 1/2" = 1'-0"



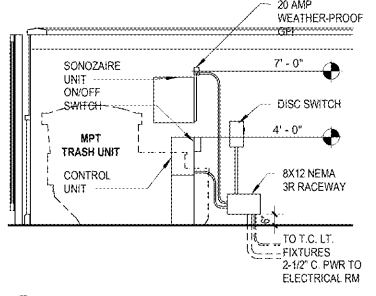
10 FRONT ELEVATION  
A12 1/4" = 1'-0"



15 REAR ELEVATION  
A12 1/4" = 1'-0"



20 SIDE ELEVATION  
A12 1/4" = 1'-0"

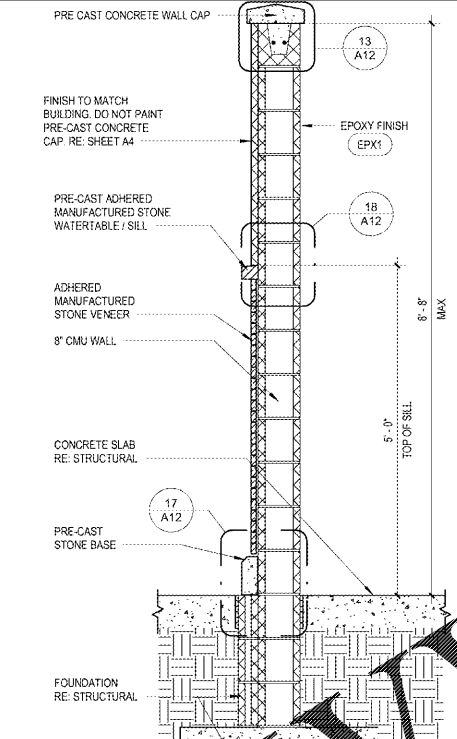


19 PARTIAL INT. ELEV.  
A12 1/4" = 1'-0"

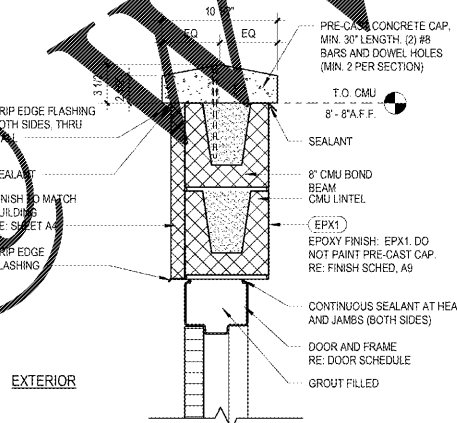
**CAUTION**  
Vehicular traffic on other side of door. Open door slowly.

NOTE:  
1. SIGN FURNISHED BY WAWA, INSTALLED BY GC.  
2. POST AT ALL GATES AND DOORS FACING TRAFFIC LANES.

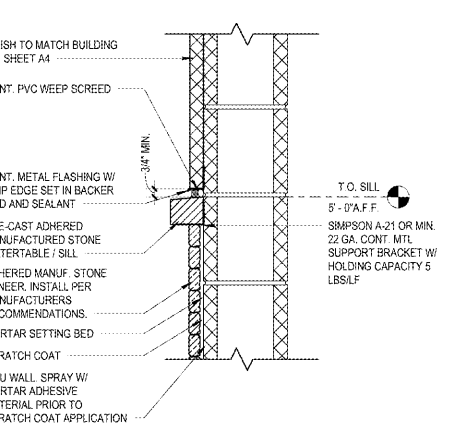
3 SIGN AT DOORS AND GATES  
A12 3/4" = 1'-0"



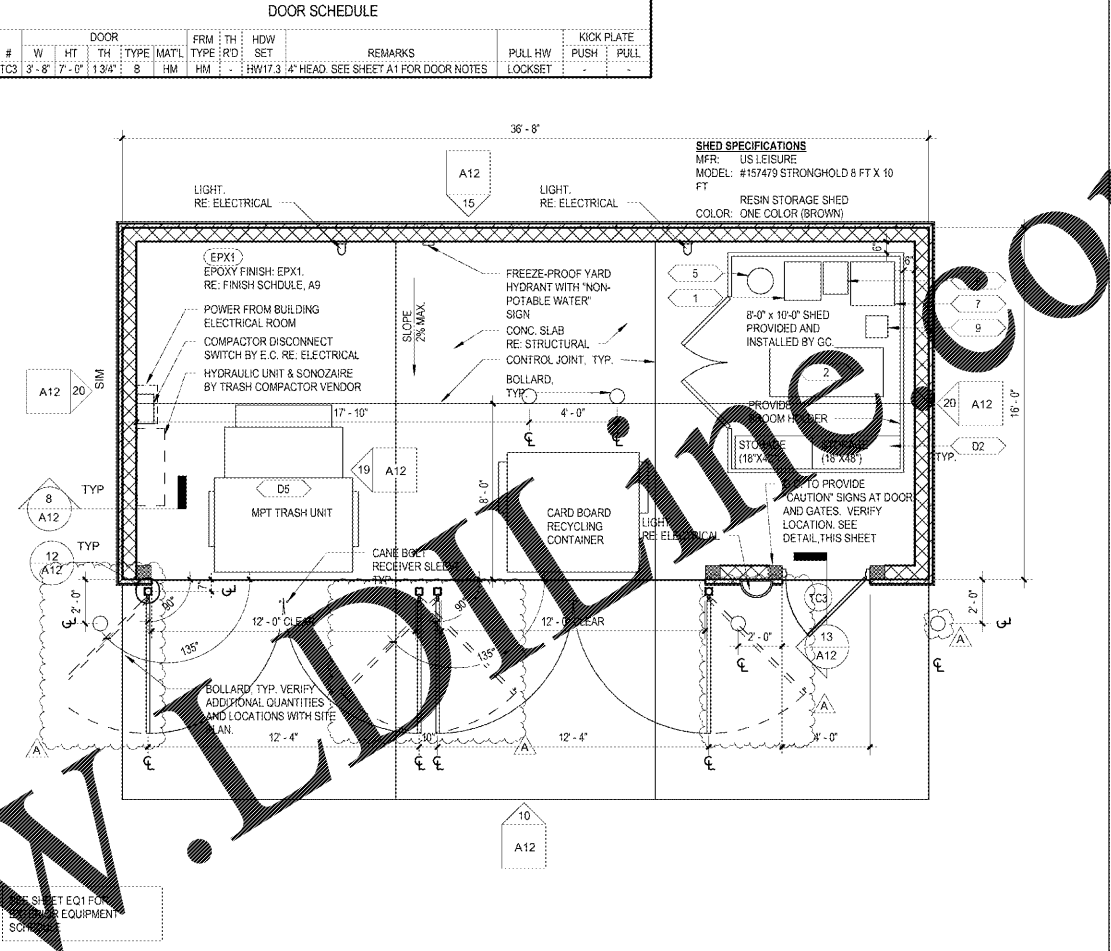
8 WALL SECTION  
A12 3/4" = 1'-0"



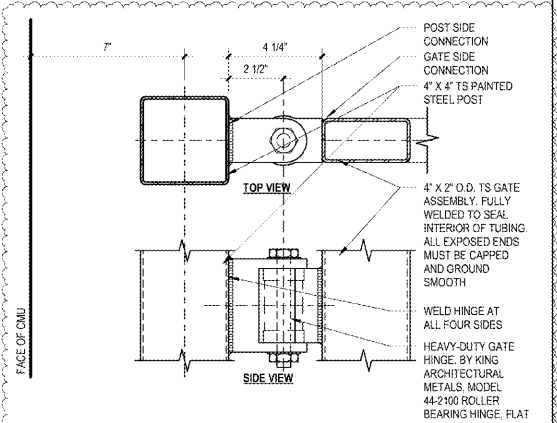
13 HEAD DETAIL  
A12 1 1/2" = 1'-0"



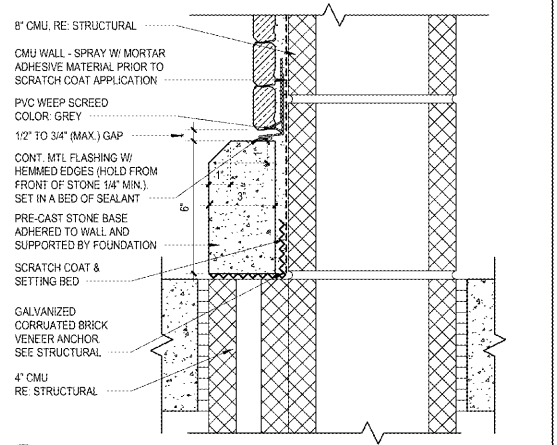
18 SILL DETAIL  
A12 1 1/2" = 1'-0"



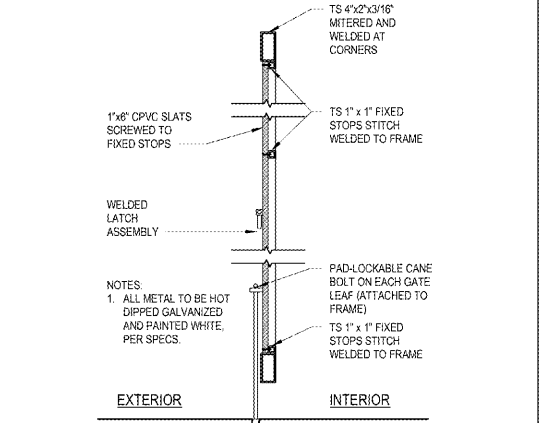
7 TRASH COMPOUND FLOOR PLAN  
A12 1/4" = 1'-0"



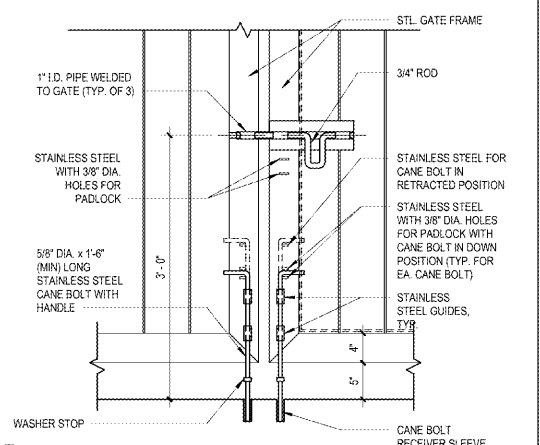
12 HINGE DETAIL  
A12 3" = 1'-0"



17 BASE DETAIL  
A12 3" = 1'-0"



11 GATE DETAIL  
A12 1" = 1'-0"



16 CANE BOLT & LATCH DETAIL  
A12 1" = 1'-0"

1925 Prospect Ave.  
Owensboro, KY 40361  
(407) 661-1100  
(407) 661-9101  
www.c-p.com

**Chhabri & Peterson**  
Architects Engineers Planners

CLIENT NAME  
**WAWA**  
260 W. BALTIMORE PIKE  
WAWA, PA 19063

PROJECT NAME  
**MARC17 2018.01-MA**  
STORE #8647 - PHM  
PARRHAM RD. & THREE CHOPT RD.  
HENRIC, VA

No.	Description	Date
PERMIT SET	09/21/2018	
REV (2018.01)	01/29/2019	
BID SET	01/29/2019	

Revision Schedule	Date
2:00 (30)	09-21-2018
DATE	09-21-2018
DRAWN	CR
CHECKED	RS

A12