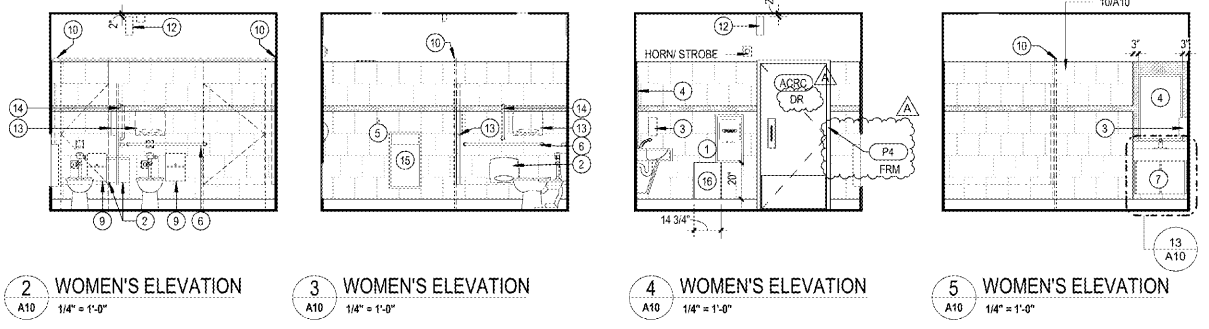
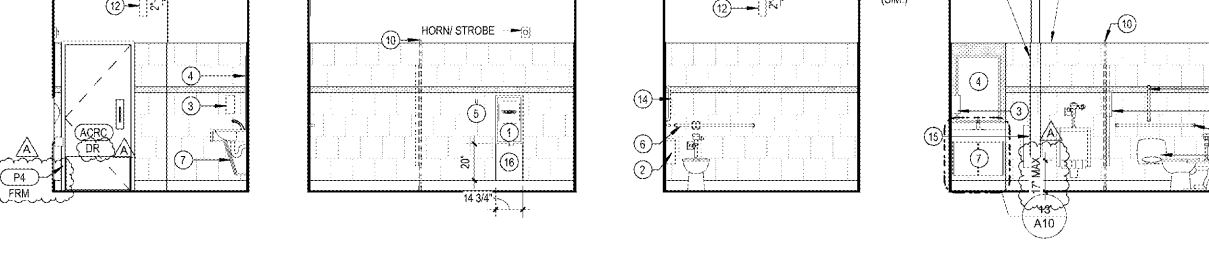


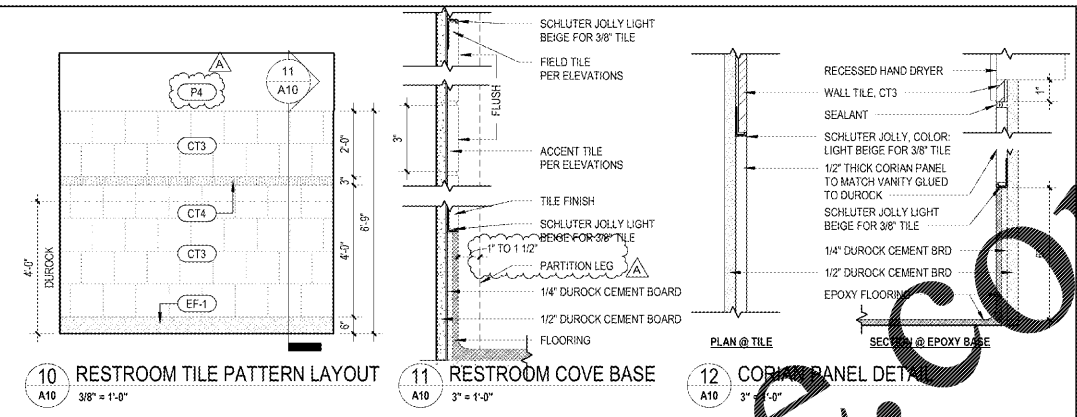
1 PUBLIC RESTROOM ACCESSORIES DIAGRAM
A10 3/8" = 1'-0"



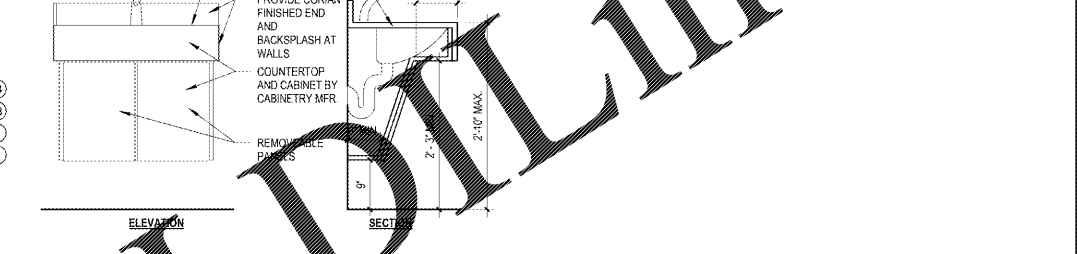
2 WOMEN'S ELEVATION A10 1/4" = 1'-0"
3 WOMEN'S ELEVATION A10 1/4" = 1'-0"
4 WOMEN'S ELEVATION A10 1/4" = 1'-0"
5 WOMEN'S ELEVATION A10 1/4" = 1'-0"



6 MEN'S ELEVATION A10 1/4" = 1'-0"
7 MEN'S ELEVATION A10 1/4" = 1'-0"
8 MEN'S ELEVATION A10 1/4" = 1'-0"
9 MEN'S ELEVATION A10 1/4" = 1'-0"

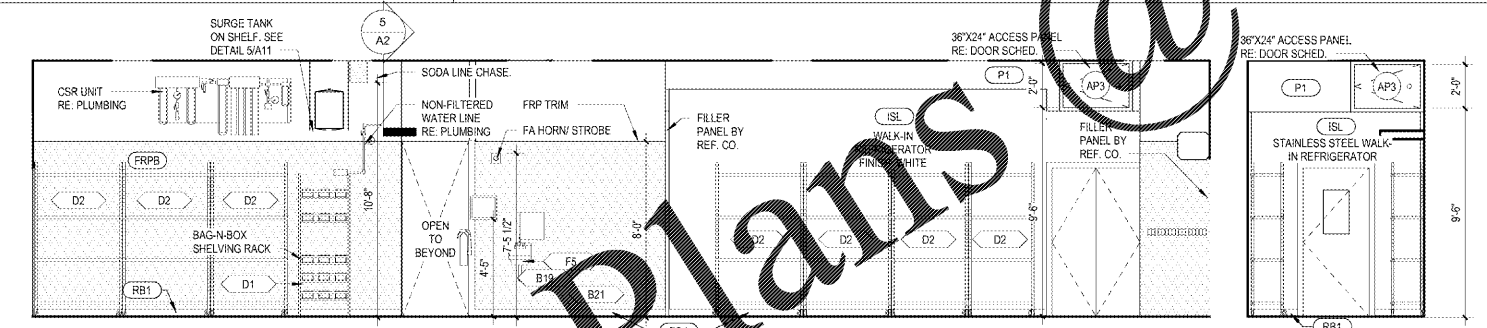


10 RESTROOM TILE PATTERN LAYOUT A10 3/8" = 1'-0"
11 RESTROOM COVE BASE A10 3" = 1'-0"

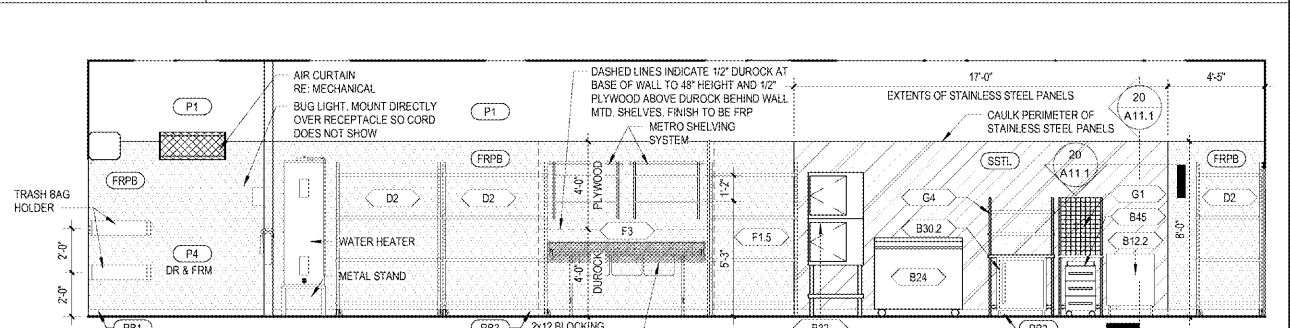


13 LAVATORY ELEVATION A10 3/4" = 1'-0"

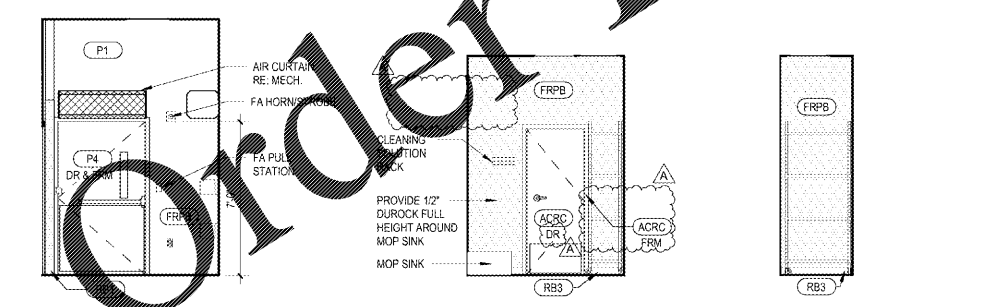
RESTROOM ACCESSORIES SCHEDULE				ALL ACCESSORIES SUPPLIED BY WAWA VENDOR, INSTALLED BY G.C. UNLESS NOTED OTHERWISE
ITEM	MANUFACTURER	MODEL #	REMARKS	SUPPLIED BY
1	EXCEL DRYER INC.	XLERATOR XL-C	CHROME ELECTRONIC HAND DRYER WITH RECESSED KIT 7" MIN. - 9" MAX. IN FRONT OF WC. SUPPLIED BY WAWA	HUC
2	YORK	571608 BLACK	TOUCHLESS ELECTRONIC SOAP DISPENSER - BATTERY OPERATED	HUC
3	BRADLEY	780-2436	24" X 36" MIRROR W/ S.S. FRAME IN SATIN FINISH. BOTTOM @ 3'-2" A.F.F.	HUC
4	BOBRICK	B-233	STAINLESS STEEL WITH SATIN FINISH MOUNT @ 46" A.F.F. PROVIDE (1) PER RESTROOM (1) IN ACCESSIBLE STALL	HUC
6	BRADLEY	812-00142	STAINLESS STEEL WITH SATIN FINISH. MOUNT HORIZ. RAILS @ 34 1/2" A.F.F. BOTH RAILS 42" IN LENGTH	HUC
7	CABINET		CABINET BELOW LAVATORY. SUPPLIED AND INSTALLED BY CABINET VENDOR, COORDINATED BY G.C.	CABINET
8	BRADLEY	BRADMAR-M244 CANYON GRANITE	SOLID PLASTIC PARTITIONS (NO SITE LINES) W/ S.S. PRIVACY SLATS. PROVIDE PULLS ON BOTH SIDES OF ADA STALL DOOR.	HUC
9	BRADLEY	4722-15	STAINLESS STEEL WITH SATIN FINISH. WOMEN'S ROOM ONLY	HUC
10	BRADLEY		MOUNT ON TOP RAIL WHERE PARTITIONS MEET WALL	HUC
12	MICROBURST 9000	401375	TWO UNITS PER RESTROOM SCREW TO WALLS. ONE NEAR DOOR AND OTHER ON OPPOSITE WALL. TOP 2" MIN. FROM CEILING	WAWA
13			TOILET SEAT COVER DISP. - FURNISHED BY WAWA, INSTALLED BY G.C.	HUC
14	BRADLEY	812-00118	STAINLESS STEEL FINISH. MOUNT BAR VERTICALLY 41" OFF BACK WALL TO CNTR. & 39" FROM FL. TO BOTTOM	HUC
15	BOBRICK	B-3644	RECESSED INTO WALL - 4" RECESS REQUIRED, 4" PROTRUDING BIN	HUC
16	DUPONT CORIAN	COLOR: COTTAGE LANE	1/2" THICK, 14 3/4" WIDE X 20" HIGH PANEL MOUNTED 6" A.F.F. LOCATED BELOW HAND DRYER. SUPPLIED BY CABINET VENDOR, INSTALLED BY G.C.	CABINET
19	HAGER	238W	FOR R.R. ENTRY DOOR. COORDINATE W/ DOOR HARDWARE. SUPPLIED BY DOOR HARDWARE VENDOR	GC
20	DUPONT CORIAN	COLOR: COTTAGE LANE	COUNTERTOP, BACKSLASH AT WALLS, HIGH GLOSS FINISH	CABINET



20 BACKROOM / WASHROOM / STAGING - SOUTH ELEVATION A10 1/4" = 1'-0"



22 BACKROOM / WASHROOM / STAGING - NORTH ELEVATION A10 1/4" = 1'-0"



23 DELIVERY STAGING ELEV. A10 1/4" = 1'-0"
24 JANITOR ELEVATION A10 1/4" = 1'-0"
25 JANITOR ELEVATION A10 1/4" = 1'-0"



26 JANITOR ELEVATION A10 1/4" = 1'-0"
27 JANITOR ELEVATION A10 1/4" = 1'-0"

WWW.LDLine.com

4
Chalaci & Peterson
Architects Engineers Planners

1925 Prospect Ave.
Owensboro, KY 40314
(407) 668-1100
(407) 668-9101
www.c&p.com

CLIENT NAME: **WAWA**
280 W. BALTIMORE PIKE
WAWA, PA 19083

PROJECT NAME: **U45-VA V2018 01-MA**
STORE #8647-PHM
PARRHAM RD. & THREE CHOPT RD.
HENRICO, VA

SHEET TITLE: **INTERIOR ELEVATIONS**

Revision Schedule	No.	Description	Date
2180330	1	PERMIT SET	09/21/2018
	A	REV V2018 01	01/28/2019
	B	BID SET	01/28/2019

PROJECT NO: 2180330
DATE: 09-21-2018
DRAWN BY: []
CHECKED BY: []
DATE: 09-21-2018

A10