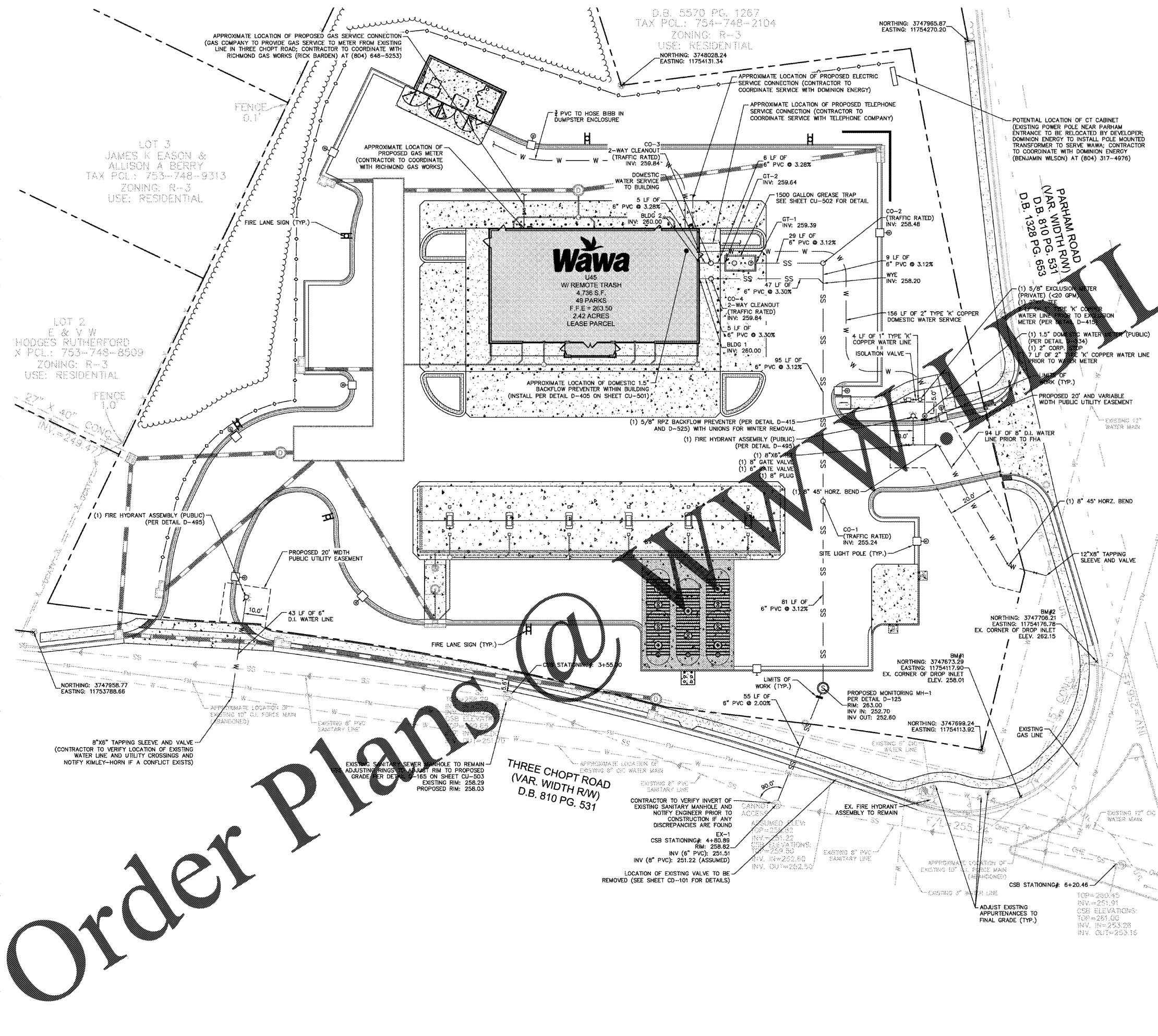


Order Plans



APPROX. WATER AND SEWER QUANTITIES

APPROXIMATE WATER QUANTITIES (PUBLIC):

6" D.I. WATER LINE	55 LF
8" D.I. WATER LINE	94 LF
8" 45° HORIZ. BENDS	2 LF
2" TYPE 'K' COPPER WATER LINE	12 LF
8"x6" TAPPING SLEEVE AND VALVE	1 EA.
12"x8" TAPPING SLEEVE AND VALVE	1 EA.
6" GATE VALVE	1 EA.
8" GATE VALVE	1 EA.
8" PLUG	1 EA.
2" CORP. STOP	1 EA.
1.5" DOMESTIC WATER METER	1 EA.
FIRE HYDRANT ASSEMBLY (FHA)	2 EA.

APPROXIMATE WATER QUANTITIES (PRIVATE):

2" TYPE 'K' COPPER WATER LINE	156 LF
1" TYPE 'K' COPPER WATER LINE	1 EA.
2"x1" TEE	1 EA.
1" ISOLATION VALVE	1 EA.
1" RPZ BACKFLOW PREVENTER (BL)	1 EA.
5/8" RPZ BACKFLOW PREVENTER	1 EA.
5" EXCLUSION METER	1 EA.

APPROXIMATE SEWER QUANTITIES (PRIVATE):

6" PVC SANITARY SEWER	332 LF
18" MONITORING MANHOLE	1 EA.
18" W-WA SANITARY CLEANOUT	2 EA.
SANITARY CLEANOUT	2 EA.
SANITARY WYE	2 EA.
1500 GALLON GREASE TRAP	1 EA.

- UTILITY NOTES
- CONTRACTOR TO VERIFY LOCATION AND DEPTH OF ALL EXISTING UTILITIES PRIOR TO START OF CONSTRUCTION AND NOTIFY KIMLEY-HORN IN ORDER TO VERIFY ADEQUATE SEPARATION BETWEEN UTILITIES CAN BE ACHIEVED AND NO CONFLICTS EXIST.
 - ALL PROPOSED UTILITIES ARE TO BE INSTALLED UNDERGROUND INCLUDING ELECTRIC, TELEPHONE, AND CATV.
 - WAWA DOMESTIC METER SERVICE PIPE SHALL BE TYPE K COPPER PIPE ON BOTH SIDES OF THE METER.
 - RPZ BACKFLOW PREVENTERS FOR DOMESTIC SERVICE LINE SHALL BE PROVIDED WITHIN BUILDING MECHANICAL ROOM. SEE HENRICO COUNTY STANDARD DETAIL D-405 ON SHEET CU-501.
 - ABOVE GROUND IRRIGATION EQUIPMENT SHALL BE COVERED BY AN ALL-WEATHER BOX OR DECORATIVE COVER.
 - ELECTRONIC MARKERS (BALL TYPE) SHALL BE INSTALLED ON ALL WATER MAINS AND SEWER GRAVITY MAINS IN ACCORDANCE WITH SPECIFICATION 2.2.05N AND 4.2.02E OF THE 2014 DPU DESIGN AND CONSTRUCTION STANDARDS.
 - REFER TO SHEET CV-101 FOR ALL EXISTING EASEMENTS.
 - REFER TO SHEET CD-101 FOR INFORMATION REGARDING ABANDONMENT OF EXISTING UTILITIES.
 - REFER TO SHEETS CU-501, CU-502, AND CU-503 FOR ALL UTILITY DETAILS.
 - ALL PROPOSED SANITARY CLEANOUTS SHALL BE TRAFFIC-RATED.
 - CONNECTIONS TO EXISTING MANHOLES WITHOUT STUBS OR BRICKED-UP OPENINGS SHALL BE THE EQUAL OF EITHER KOR-N-SEAL WITH STAINLESS STEEL EXPANDER RING OR PRESSURE SEAL WITH NYLON EXPANDER SLEEVE INSTALLED BY CORE DRILLING MANHOLE AND IN STRICT ACCORDANCE WITH MANUFACTURER'S SPECIFICATIONS.
 - FIRE LANE MARKINGS SHOWN FOR REFERENCE ONLY. CONTRACTOR SHALL COORDINATE WITH FIRE MARSHAL TO VERIFY FIRE LANE MARKING AND/OR SIGNAGE REQUIREMENTS PRIOR TO INSTALLATION. UNLESS DIRECTED OTHERWISE BY THE FIRE MARSHAL, PAVEMENT MARKINGS SHALL CONSIST OF A 4" STRIPE WITH TWO COATS OF YELLOW TRAFFIC PAINT.
 - ALL FIRE LANE SIGNS ARE TO BE DOUBLE-SIDED AND INSTALLED PERPENDICULAR TO THE CURB. SEE DETAIL ON SHEET CU-501.
 - FIRE LANES ARE MARKED AS FOLLOWS:
 - UNMARKED CURB
 - YELLOW-PAINTED CURB FOR FIRE LANE SEE DETAIL ON SHEET CU-501
 - COUNTY SURVEY MONUMENT 113A WAS USED IN THE PREPARATION OF THE SURVEY. THE MONUMENT IS LOCATED APPROXIMATELY 950 FEET TO THE SOUTH OF THE INTERSECTION OF PARHAM ROAD AND THREE CHOPT ROAD.

WAWA AT PARHAM AND THREE CHOPT PREPARED FOR REBEEKE CO. HENRICO COUNTY VIRGINIA

UTILITY PLAN

CSB/CWB 196 NE

SHEET NUMBER CU-101

DATE: 11/07/18

BY: [Signature]

REVISIONS:

1	OIL WATER SEPARATOR	11/07/18	RRP
2	OIL WATER SEPARATOR	07/02/19	RRP
3	UNDERGROUND PIPE CONNECTIONS	01/03/19	RRP
4	PHASE II EAS REVISIONS	01/14/19	RRP
5	BID SET REVISIONS	01/17/19	RRP

POD# 2018-00101 & 00196

