

Wawa at Parham and Three Chopt - Stormwater Management System - Details - 11/07/18

Proposed Layout

1844' 57.36 StormTank Module (Shallow Footprint) = 2,179.93 sq ft

1844' 57.36 StormTank Module

Estimated Gravel Volume = 1,330.45 cu yd

Estimated Geotextile Volume = 237.11 cu yd

Estimated System Storage Volume (Including Storm) = 14,876.93 cu yd

Estimated System Storage Volume (Including Storm) = 14,876.93 cu yd

****DOES NOT INCLUDE #7 BASE STONE #706040E**

Material Quantities

Item	Quantity
StormTank Module	908
36" Side Panels	276
36" Dividers	0.672
StormTank Module (Top Layer)	908
36" Side Panels	276
36" Dividers	0.672
StormTank Module (Bottom Layer)	908
36" Side Panels	276
36" Dividers	0.672
StormTank Module (Bottom Layer)	908
36" Side Panels	276
36" Dividers	0.672

Elevations

Item	Elevation
Storm Inlet	258.50
Module Invert	251.00
Top of Module	231.00
Top of Stone Backfill	258.50
Min. Finished Grade	258.00
Max. Finished Grade	262.00

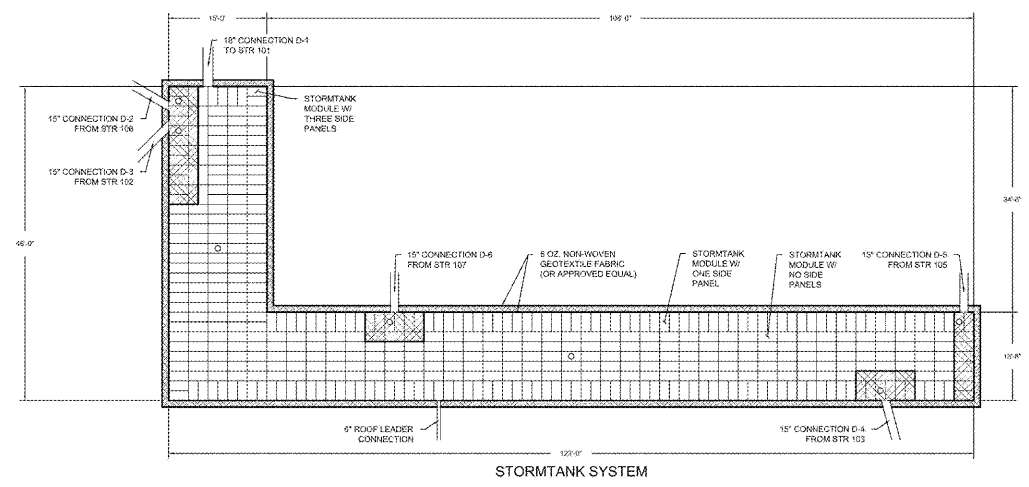
NOTES:

- REFERENCE BRENTWOOD INDUSTRIES STANDARD DRAWINGS AND NOTES FOR DETAIL D-100 FOR DETENTION DETAIL D-100.
- REFERENCE CURRENT INSTALLATION INSTRUCTIONS FOR PROPER INSTALLATION PRACTICES.
- ENGINEER OF RECORD TO VERIFY CONFORMANCE TO MANUFACTURER'S ALLOWABLE PROXIMITY TO OTHER STRUCTURES.
- ALL PIPES AND PIPE LOCATIONS AND DEPTHS BY OTHERS.
- ALL STRUCTURES AND PIPES TO BE SUPPLIED BY OTHERS.

LEGEND:

1" OBSERVATION POINT

DEBRIS ROW



BRENTWOOD
StormTank Construction Details

1844' 57.36 StormTank Module (Shallow Footprint) = 2,179.93 sq ft

1844' 57.36 StormTank Module

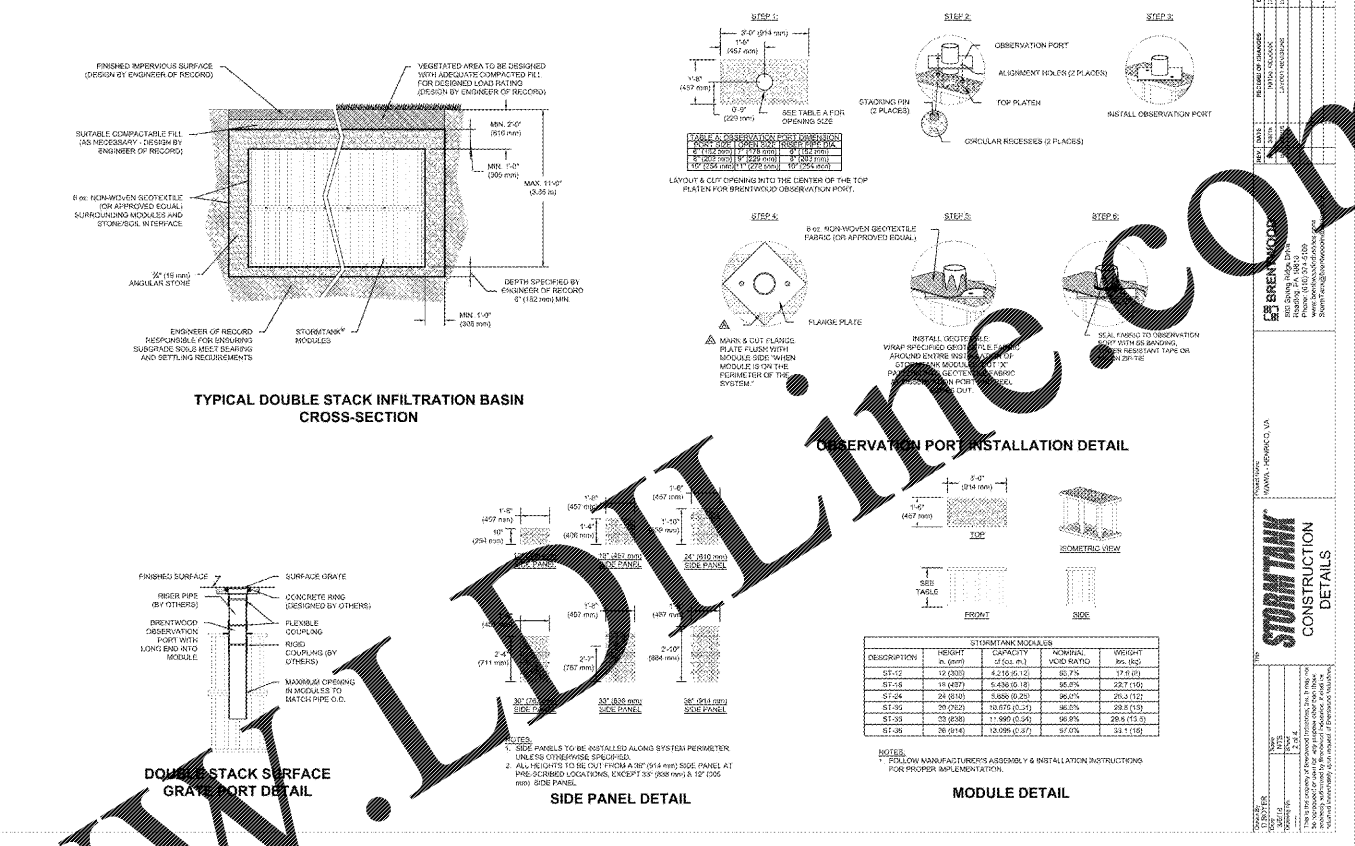
Estimated Gravel Volume = 1,330.45 cu yd

Estimated Geotextile Volume = 237.11 cu yd

Estimated System Storage Volume (Including Storm) = 14,876.93 cu yd

Estimated System Storage Volume (Including Storm) = 14,876.93 cu yd

****DOES NOT INCLUDE #7 BASE STONE #706040E**



REVISIONS

No.	DATE	REVISIONS
1	11/07/18	OIL WATER SEPARATOR REVISIONS
2	07/02/19	OIL WATER SEPARATOR REVISIONS
3	07/03/19	UNDERGROUND PIPE CONNECTIONS REVISIONS
4	01/14/19	PHASE II EAS REVISIONS
5	01/17/19	BID SET REVISIONS

DESIGNED BY: KRW
DRAWN BY: KRW
CHECKED BY: RRP

DATE: 11/07/18

BY: [Signature]

Kimley»Horn

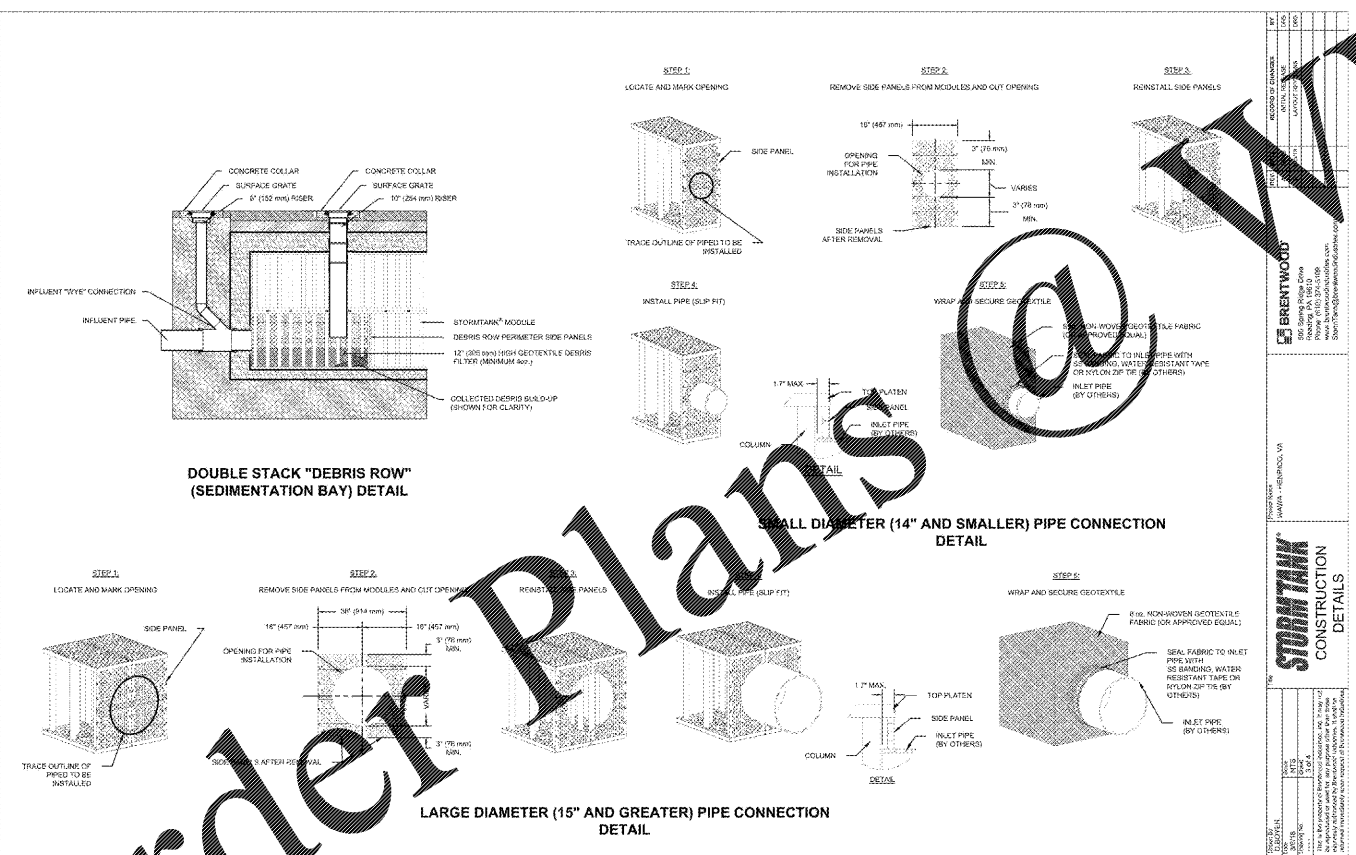
© 2018 KIMLEY-HORN AND ASSOCIATES, INC.
1700 WILLOW LANE DR., SUITE 200, RICHMOND, VA 23230
PHONE: 804-673-3822
WWW.KIMLEY-HORN.COM

WAWA AT PARHAM AND THREE CHOPT PREPARED FOR REBKEE CO. VIRGINIA

UNDERGROUND DETENTION DETAILS

CG-502

POD# 2018-00101 & 00196



BRENTWOOD
StormTank Construction Details

1844' 57.36 StormTank Module (Shallow Footprint) = 2,179.93 sq ft

1844' 57.36 StormTank Module

Estimated Gravel Volume = 1,330.45 cu yd

Estimated Geotextile Volume = 237.11 cu yd

Estimated System Storage Volume (Including Storm) = 14,876.93 cu yd

Estimated System Storage Volume (Including Storm) = 14,876.93 cu yd

****DOES NOT INCLUDE #7 BASE STONE #706040E**

GENERAL CONDITIONS

1.0 STORMTANK ASSEMBLY

2.0 BASIN EXCAVATION

3.0 SUB-GRADE REQUIREMENTS

4.0 LEVELING BED INSTALLATION

5.0 STORMTANKS MODULE PLACEMENT

6.0 SIDE BACKFILL

7.0 TOP BACKFILL (STONE)

8.0 SUITABLE COMPACTABLE FILL

ASSEMBLY INSTRUCTIONS:

- PLACE A PLATE ON A LEVEL SURFACE AND INSERT THE BENTWOOD COLUMN INTO THE PLATE RECEPTOR CURVE. FIRMLY TAP EACH COLUMN WITH A RUBBER Mallet TO SEAT THE COLUMN AS SHOWN.
- PLACE A SECOND PLATE ON A LEVEL SURFACE. FLIP THE PREVIOUSLY ASSEMBLED COMPONENTS UPSIDE DOWN ONTO THE SECOND PLATE, ALIGNING THE COLUMN INTO THE PLATE RECEPTOR CURVE. FIRMLY TAP EACH COLUMN WITH THE TOP ASSEMBLY BY ALL TERMINAL TAPS, WITH A RUBBER Mallet AT HIGH STRUCTURAL COLUMN UNTIL ALL COLUMNS ARE FIRMLY SEATED.

ORIGINAL NOTES:

- REMOVE PACKAGING MATERIAL AND CHECK FOR ANY DAMAGE. REPORT ANY DAMAGE TO BRENTWOOD INDUSTRIES AND BRENTWOOD INDUSTRIES IMMEDIATELY.
- STORMTANK COMPONENTS ARE COVERED BY A ONE YEAR WARRANTY. ANY DAMAGE TO BRENTWOOD INDUSTRIES AND BRENTWOOD INDUSTRIES IMMEDIATELY.

NOTES:

- IF CONSTRUCTION IS TO BE STOPPED FOR ANY REASON, THE STORMTANK SHOULD BE COVERED WITH A GEOTEXTILE FABRIC AND A RUBBER Mallet TO SEAT THE COLUMN AS SHOWN.
- IF CONSTRUCTION IS TO BE STOPPED FOR ANY REASON, THE STORMTANK SHOULD BE COVERED WITH A GEOTEXTILE FABRIC AND A RUBBER Mallet TO SEAT THE COLUMN AS SHOWN.

Order Plans @ WAWA

CG-502

UNDERGROUND DETENTION DETAILS

CG-502