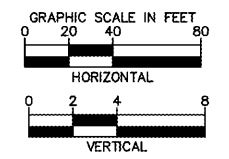
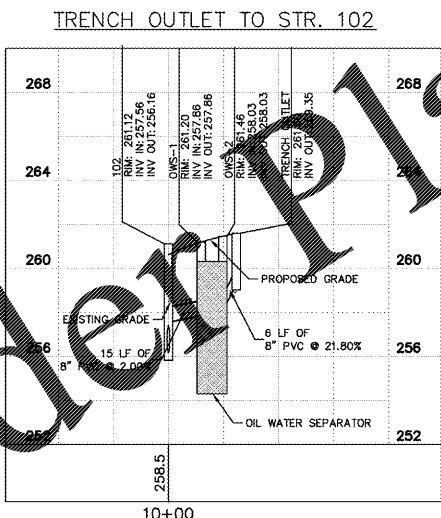
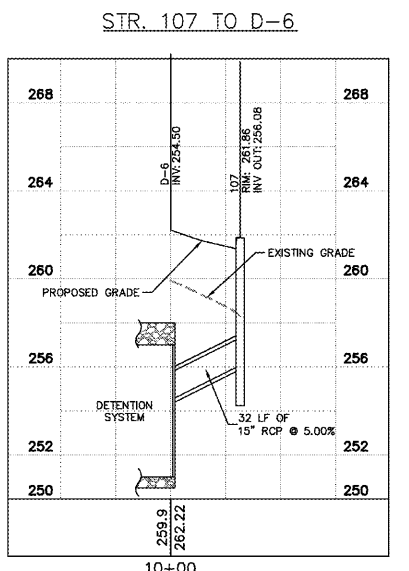
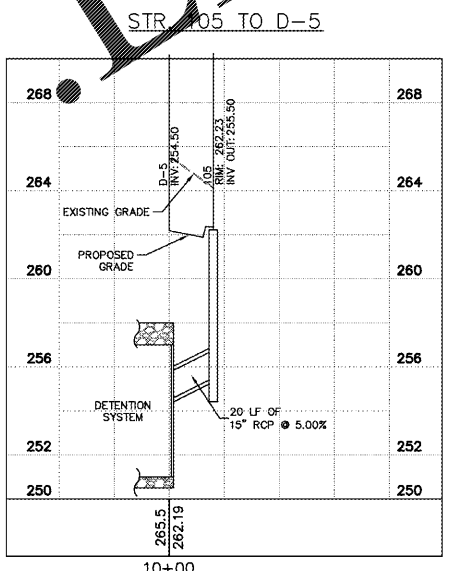
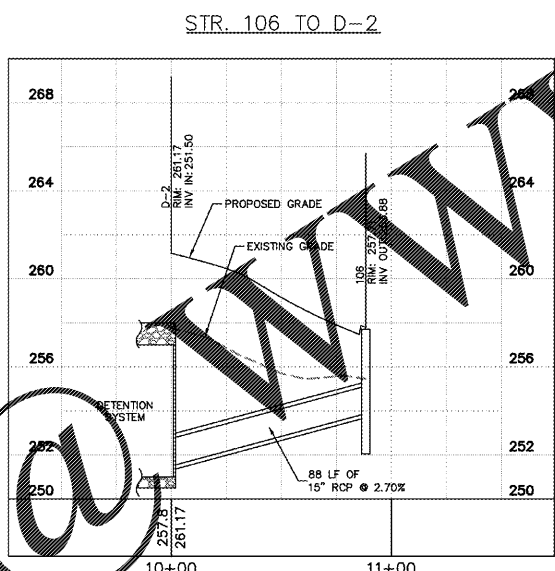
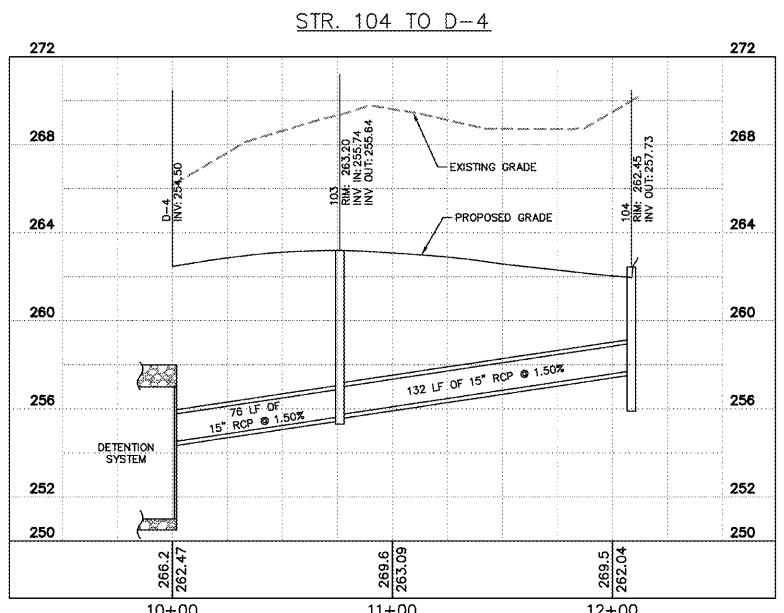
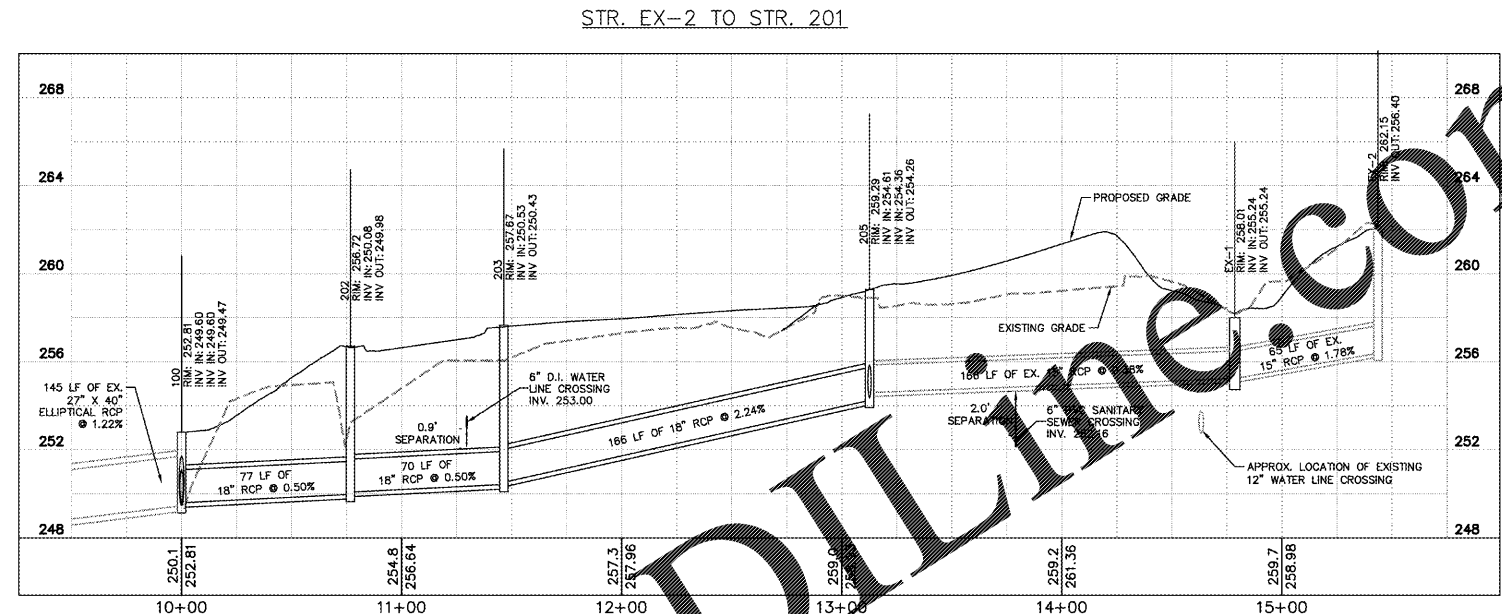
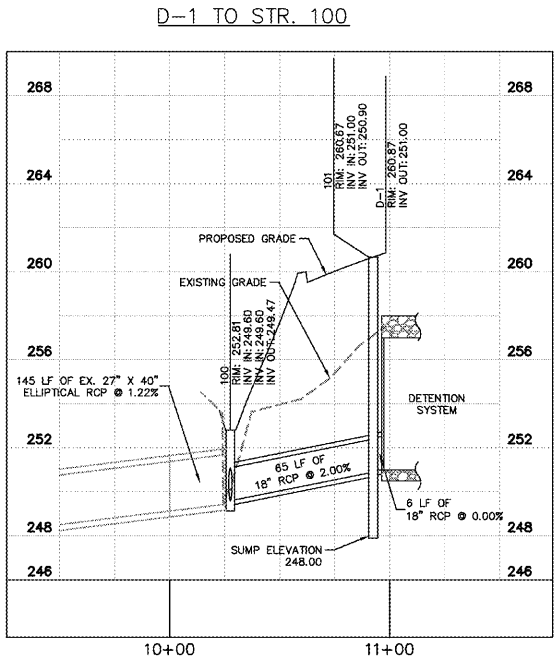
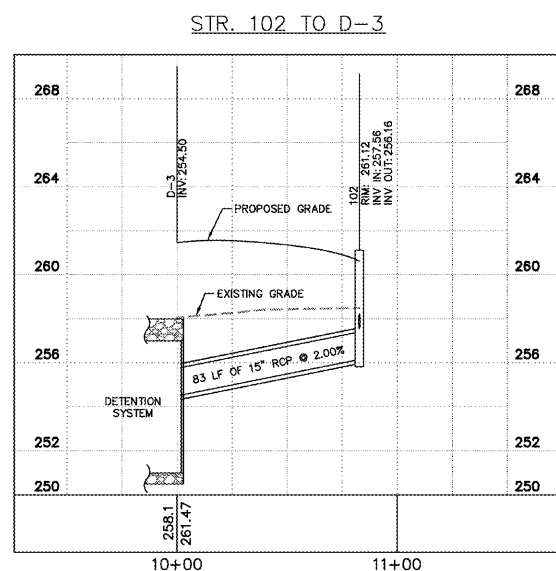


Plotted By: Westwood, Kelsey; Sheet: S&E/Plan Layout/CG-301 STORM SEWER PROFILES; January 17, 2018; 04:20:28pm; K:\VIC-DIV\131610 - Wawa - Rebekke\025 - Parham and Three Chopt - Henrico\CAD\Profiles\CG-301 STORM SEWER PROFILES.dwg  
 For information, together with the profiles and notes, the construction of this project is intended only for the specific purpose and shall not be construed as a contract document.

Order Plans



<b>Kimley»Horn</b> <small>© 2018 KIMLEY-HORN AND ASSOCIATES, INC.          1700 WILLOW LAWN DR., SUITE 200, RICHMOND, VA 23230          PHONE: 804-673-3822          WWW.KIMLEY-HORN.COM</small>	
<b>STORM SEWER PROFILES</b>	<b>WAWA AT PARHAM AND THREE CHOPT</b> PREPARED FOR <b>REBKEE CO.</b> <small>HENRICO COUNTY VIRGINIA</small>
KHA PROJECT: 113160005 DATE: 11/09/2018 SCALE: AS SHOWN DESIGNED BY: KRW DRAWN BY: KRW CHECKED BY: RRP	1. OIL WATER SEPARATOR SIGNS: 11/07/18 RRP 2. OIL WATER SEPARATOR REVISIONS: 07/02/19 RRP 3. UNDERGROUND PIPE CONNECTIONS: 01/03/19 RRP 4. PHASE II EAS REVISIONS: 01/14/19 RRP 5. BID SET REVISIONS: 07/17/19 RRP
SHEET NUMBER <b>CG-301</b>	DATE: BY:

POD# 2018-00101 & 00196