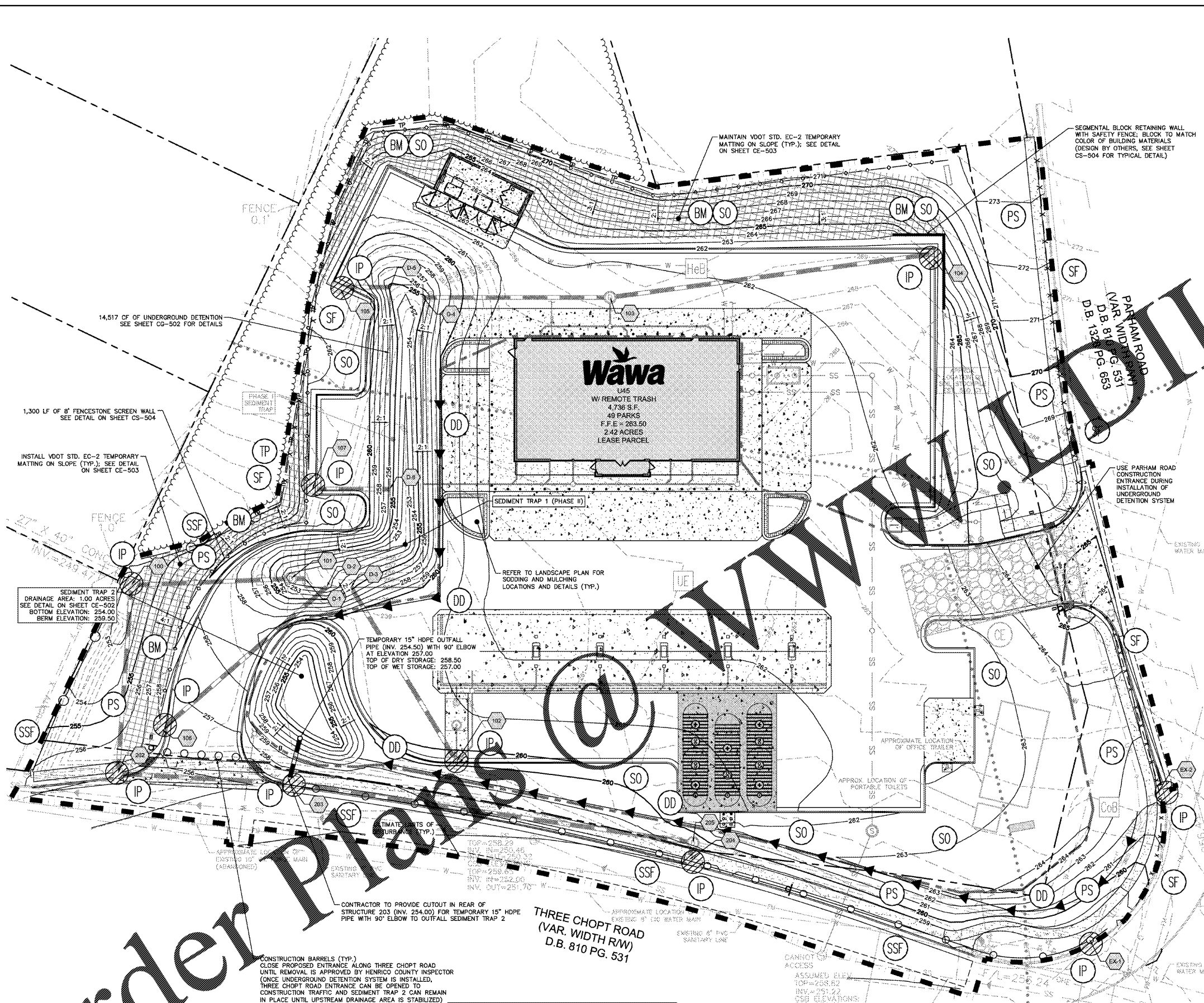


Project: WAWA E&SC PLAN PHASE II E&SC PLAN  
 Designer: KR/VP  
 Checker: RRP  
 Date: 11/09/2018  
 Scale: AS SHOWN  
 Drawing: WAWA E&SC PLAN PHASE II E&SC PLAN



VIRGINIA UNIFORM CODING SYSTEM FOR  
EROSION AND SEDIMENT CONTROL

STD. & SPEC.	MEASURE	CALLOUT	SYMBOL	QUANTITY
3.02	CONSTRUCTION ENTRANCE	CE	(Symbol)	1 EA.
3.05	SILT FENCE	SF	(Symbol)	660 LF
	SUPER SILT FENCE	SSF	(Symbol)	560 LF
3.07	INLET PROTECTION	IP	(Symbol)	11 EA.
3.08	CULVERT INLET PROTECTION	CIP	(Symbol)	1 EA.
3.09	DIVERSION DIKE	DD	(Symbol)	35 LF
3.13	SEDIMENT TRAP	ST	(Symbol)	1 EA.
3.31	TEMPORARY SEEDING	TS	(Symbol)	±0.1 AC.
3.32	PERMANENT SEEDING	PS	(Symbol)	±0.2 AC.
3.33	SODDING	SO	(Symbol)	±0.6 AC.
3.35	BLANKET MATTING	BM	(Symbol)	870 SY.
3.36	TREE PROTECTION	TP	(Symbol)	340 LF

SEDIMENT TRAP DRAINAGE BOUNDARY	(Symbol)	
PRELIMINARY LIMITS OF DISTURBANCE	(Symbol)	1.65 AC.
ULTIMATE LIMITS OF DISTURBANCE	(Symbol)	2.65 AC.

PHASE II PROBABLE CONSTRUCTION SEQUENCE

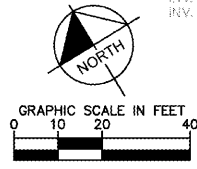
1. CONTRACTOR TO INSPECT AND MAINTAIN ALL EROSION & SEDIMENT CONTROL MEASURES AND MAKE ANY NECESSARY REPAIRS/ADDITIONS BEFORE BEGINNING PROPOSED IMPROVEMENTS.
  2. BEGIN SITE DEMOLITION AND CLEARING ACTIVITIES. MAINTAIN POSITIVE DRAINAGE TO PHASE I SEDIMENT TRAP AT ALL TIMES. ADDITIONAL DIVERSIONS AND OTHER MEASURES MUST BE ADDED AS NECESSARY TO MAINTAIN POSITIVE DRAINAGE FROM CLEARING AND DEMOLITION ACTIVITY TO PHASE I SEDIMENT TRAP.
  3. BEGIN INSTALLATION OF STORM SEWER, INLET PROTECTION AND UTILITIES. INSTALL PIPE 100 TO 202 AND STORM SEWER ALONG THREE CHOPT ROAD (STRUCTURES 202 TO 205) FIRST TO ALLOW THE PHASE I TRAP TO REMAIN IN PLACE AS LONG AS POSSIBLE. TEMPORARY PIPES ARE TO REMAIN IN PLACE UNTIL PERMANENT STRUCTURES ARE INSTALLED.
  4. INSTALL SEDIMENT TRAP 2 AND DIVERSIONS DIRECTING WATER TOWARDS THE NEW TRAP. MODIFY SEDIMENT TRAP 1 TO ALLOW INSTALLATION OF REMAINING STORM SEWER. NOTE THAT ALL DIVERSIONS, SEDIMENT TRAPS, AND STOCKPILES MUST BE SEEDED AND MULCHED IMMEDIATELY UPON CONSTRUCTION.
  5. INSTALL REMAINDER OF STORM SEWER WHILE MAINTAINING POSITIVE DRAINAGE TO THE SEDIMENT TRAPS; ENSURE INSTALLATION OF STRUCTURES 101 AND 100 IS COMPLETE BEFORE INSTALLING UPSTREAM PIPES. ENSURE ADEQUATE INLET PROTECTION IS PROVIDED.
  6. ENSURE INLET PROTECTION FOR STRUCTURES 104, 105, AND 107 IS ADEQUATE AND FUNCTIONING PROPERLY. ENSURE DIVERSION IS IN PLACE TO DIRECT THE MAJORITY OF DRAINAGE TO SEDIMENT TRAP 2 TO PREPARE FOR UNDERGROUND DETENTION INSTALLATION AND THE REMOVAL OF SEDIMENT TRAP 1. NOTE THAT THE HENRICO COUNTY ENVIRONMENTAL INSPECTOR MUST APPROVE THE REMOVAL OF SEDIMENT TRAP 1 TO ALLOW FOR INSTALLATION OF THE UNDERGROUND DETENTION SYSTEM.
  7. INSTALL PROPOSED UNDERGROUND DETENTION SYSTEM.
- REFER TO THE "SWM FACILITIES INSPECTIONS / CERTIFICATIONS" SECTION OF THE EROSION AND SEDIMENT CONTROL STANDARD NOTES SHEET (CE-501) FOR INFORMATION REGARDING INSPECTION PROTOCOL AND FREQUENCY. NOTE THAT A CONSTRUCTION AS-BUILT RECORD DRAWING AND A CERTIFICATION THAT THE STORMWATER MANAGEMENT FACILITY HAS BEEN CONSTRUCTED IN ACCORDANCE WITH THE APPROVED ENVIRONMENTAL COMPLIANCE PLAN MUST BE SUBMITTED TO THE COUNTY AND APPROVED PRIOR TO ENVIRONMENTAL COMPLIANCE BOND (ECB) RELEASE OR GENERAL CONSTRUCTION PERMIT TERMINATION. ENSURE THAT APPROPRIATE INSPECTIONS OF THE UNDERGROUND DETENTION SYSTEM ARE CONDUCTED AT CRITICAL POINTS OF CONSTRUCTION TO ACCURATELY COMPLETE THE CONSTRUCTION RECORD DRAWING WITH SUFFICIENT DETAILS. NOTE THAT ALL LAYERS OF THE SYSTEM SHOULD BE ACCURATELY SURVEYED FOR THE AS-BUILT ELEVATIONS SO THAT THESE ITEMS CAN BE OBTAINED FOR THE ORD. IT IS RECOMMENDED THAT THE HENRICO COUNTY BMP ENGINEER BE INVOLVED IN THESE INSPECTIONS.
8. ONCE UNDERGROUND DETENTION INSTALLATION IS COMPLETE AND SEDIMENT TRAP 1 IS REMOVED, PROVIDE ADEQUATE COVER TO ALLOW THE THREE CHOPT ROAD ENTRANCE TO BE OPENED TO CONSTRUCTION TRAFFIC.
  9. CONTINUE SITE GRADING TO PROPOSED FINISHED GRADES MAINTAINING POSITIVE DRAINAGE TO SEDIMENT TRAP 2. INSTALL BLANKET MATTING AND PERMANENT SEEDING ALONG NORTH CUT SLOPE AND WEST FILL SLOPE AS SHOWN. SEDIMENT TRAP 2 IS TO REMAIN IN PLACE AS LONG AS POSSIBLE DURING CONSTRUCTION. SEDIMENT TRAP 2 CANNOT BE REMOVED UNTIL AUTHORIZED BY THE HENRICO COUNTY ENVIRONMENTAL INSPECTOR.
  10. BEGIN CONSTRUCTION OF INTERNAL PARKING, CURB AND GUTTER, AND DRIVE AISLES. INSTALL STONE BASE TO ALL PARKING AREAS TO SERVE AS TEMPORARY STABILIZATION AND INSTALL TEMPORARY SEEDING IN NEWLY GRADED AREAS.
  11. CONSTRUCT PROPOSED WAWA BUILDING AND GAS CANOPY.
  12. PAVE PARKING AREAS, INSTALL PAVEMENT STRIPING, AND FULLY STABILIZE ON-SITE IMPROVEMENTS.
  13. REMOVE EROSION CONTROLS UPON FULL STABILIZATION OF ALL SITE IMPROVEMENTS AND COUNTY APPROVAL. NO EROSION AND SEDIMENT CONTROL MEASURES CAN BE REMOVED WITHOUT PERMISSION FROM THE HENRICO COUNTY ENVIRONMENTAL INSPECTOR.
  14. INSTALL FINAL LANDSCAPING AND PLANTINGS.
  15. SITE CLEANUP/DEMOLITION.

# Order Plans @ WAWA

CONTRACTOR TO PROVIDE CUTOUT IN REAR OF STRUCTURE 203 (INV. 254.00) FOR TEMPORARY 15" HOPE PIPE WITH 90° ELBOW TO OUTFALL SEDIMENT TRAP 2

SOILS LEGEND

COLFAX FINE SANDY LOAM; TYPE C/D - 0 TO 6 PERCENT SLOPES	CoB
HELENA FINE SANDY LOAM; TYPE C - 2 TO 6 PERCENT SLOPES	HeB
UDORTHERNTS, LOAMY; TYPE D - URBAN LAND	Ue
SOIL TYPE BOUNDARY	- - - - -



- E&SC NOTES
1. SEE SHEET CD-101 FOR DEMOLITION PLAN.
  2. SEE SHEETS CE-501 THROUGH CE-504 FOR EROSION AND SEDIMENT CONTROL NOTES AND DETAILS.
  3. SEE SHEET CP-101 FOR PLANTING BED AND SODDING DETAILS.

Kimley»Horn		<small>© 2018 KIMLEY-HORN AND ASSOCIATES, INC. 1700 WILLOW LAWN DR., SUITE 200, RICHMOND, VA 23230 PHONE: 804-673-3882 WWW.KIMLEY-HORN.COM</small>
PHASE II E&SC PLAN		
WAWA AT PARHAM AND THREE CHOPT	PREPARED FOR <b>REBKEE CO.</b>	VIRGINIA HENRICO COUNTY
SHEET NUMBER <b>CE-102</b>		

POD# 2018-00101 & 00196