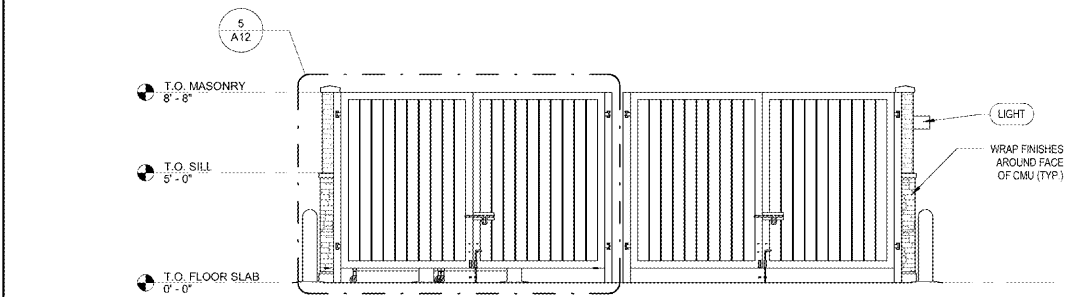
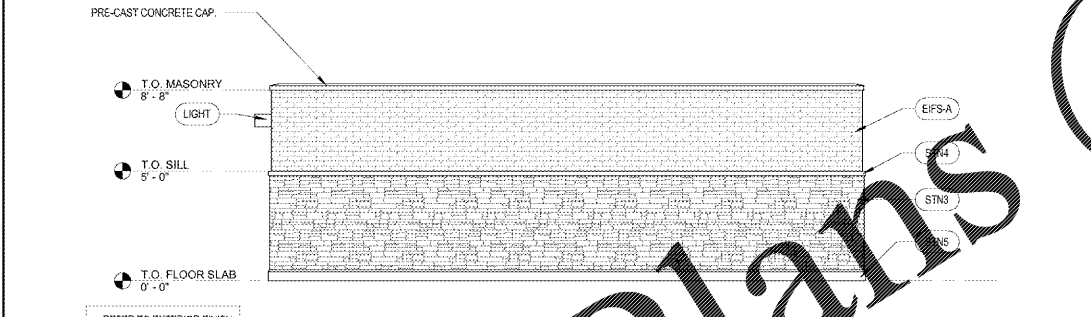


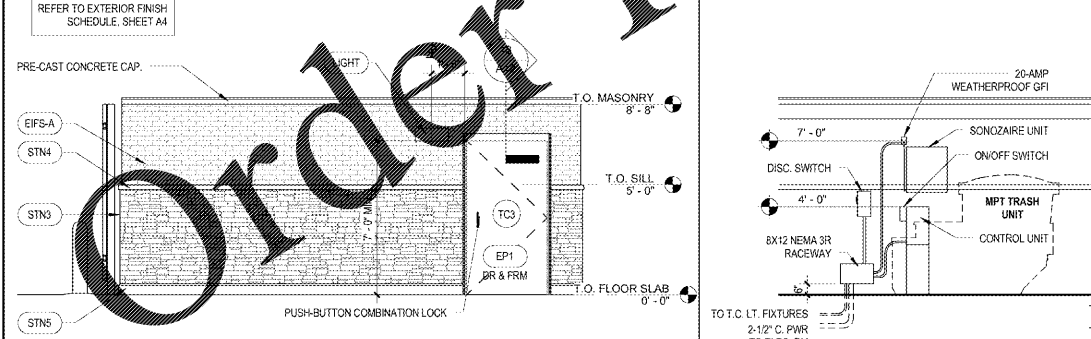
5 GATE ELEVATION
A12 1/2" = 1'-0"



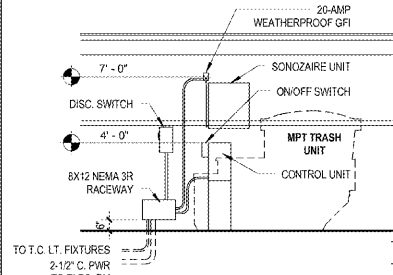
10 FRONT ELEVATION
A12 1/4" = 1'-0"



15 REAR ELEVATION
A12 1/4" = 1'-0"



20 SIDE ELEVATION
A12 1/4" = 1'-0"

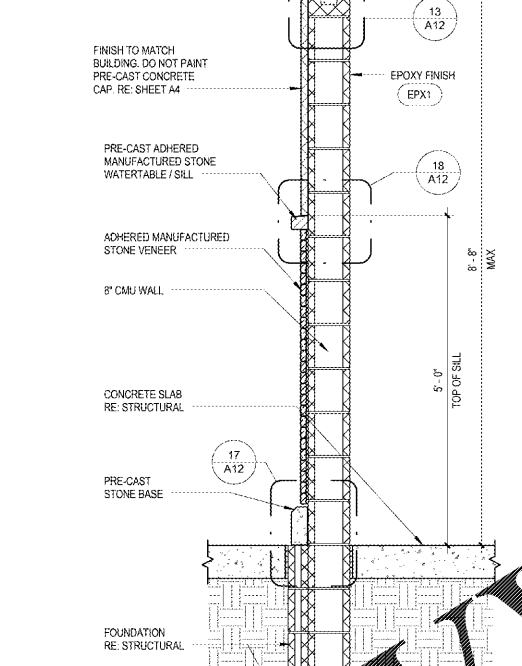


19 PARTIAL INT. ELEV.
A12 1/4" = 1'-0"

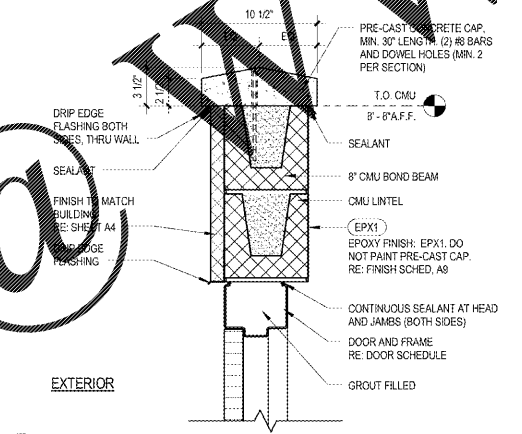
CAUTION
Vehicular traffic on other side of door. Open door slowly

NOTE:
1. SIGN FURNISHED BY WAWA, INSTALLED BY GC
2. POST AT ALL GATES AND DOORS FACING TRAFFIC LANES

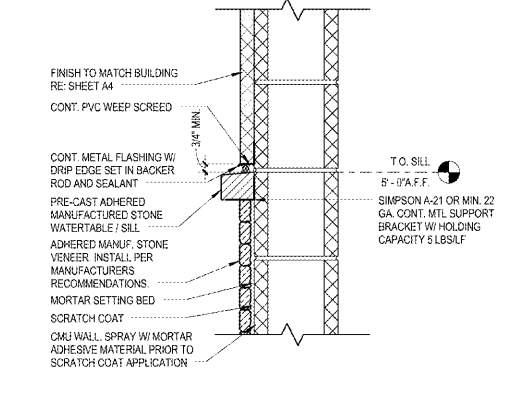
3 SIGN AT DOORS AND GATES
A12 3/4" = 1'-0"



8 WALL SECTION
A12 3/4" = 1'-0"



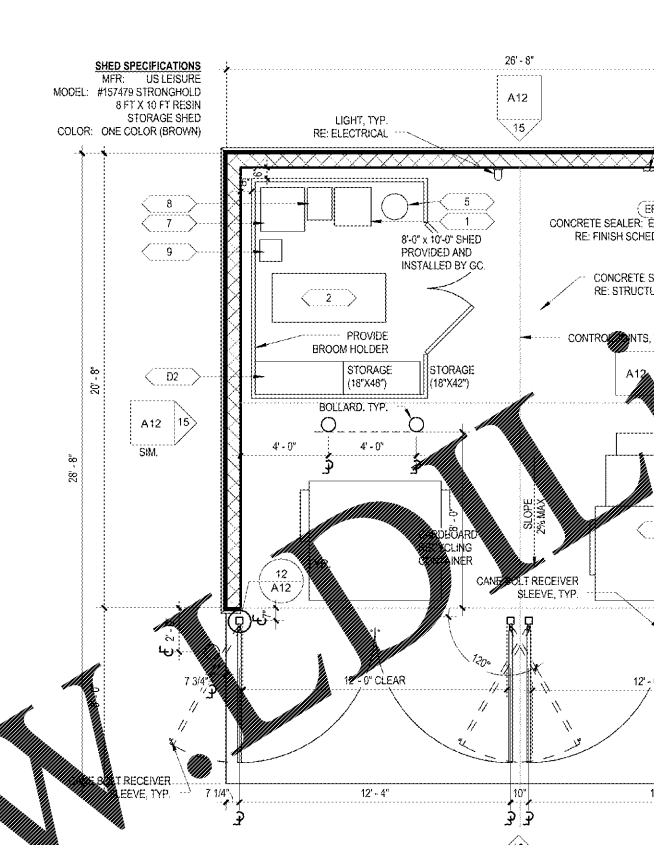
13 HEAD DETAIL
A12 1 1/2" = 1'-0"



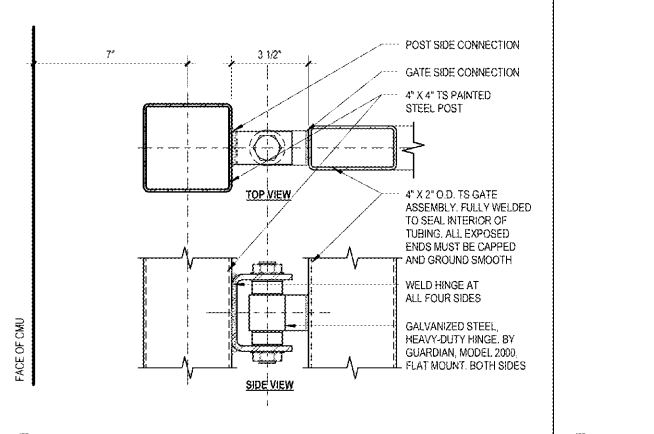
18 SILL DETAIL
A12 1 1/2" = 1'-0"

DOOR SCHEDULE

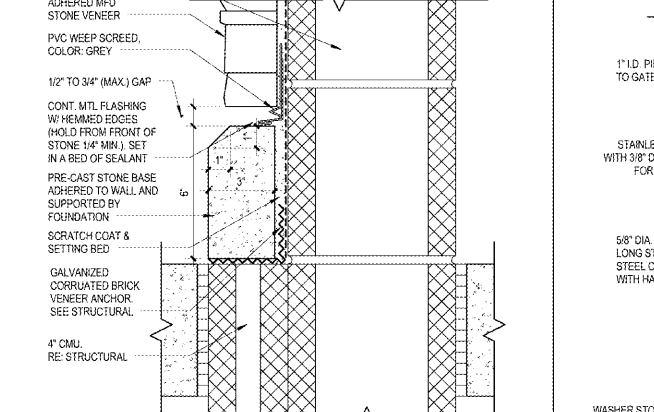
#	W	H	TH	TYPE	MATL	FRM	TH	HOW	REMARKS	PULL HW	KICK PLATE
TCS	3'-8"	7'-0"	1 3/4"	B	HM	HM	HM	HW17.3	4' HEAD, SEE SHEET A1 FOR DOOR NOTES		



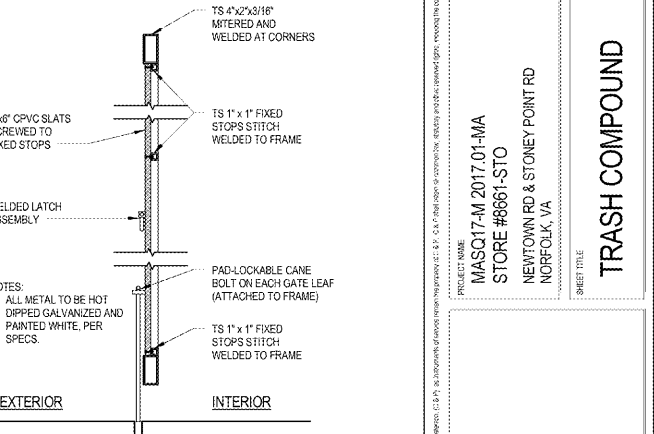
7 TRASH COMPOUND FLOOR PLAN
A12 1/4" = 1'-0"



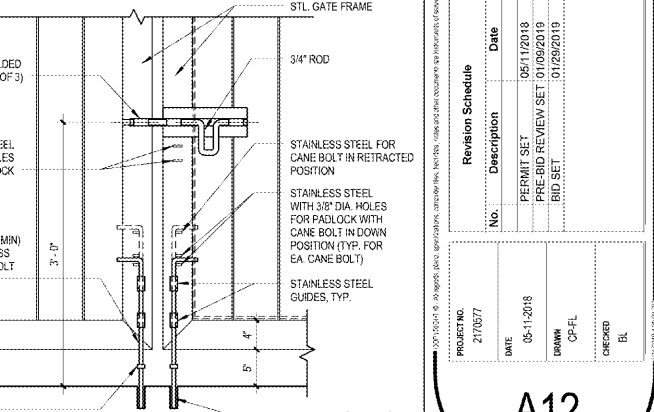
12 HINGE DETAIL
A12 3" = 1'-0"



17 BASE DETAIL
A12 3" = 1'-0"



11 GATE DETAIL
A12 1" = 1'-0"



16 CANE BOLT & LATCH DETAIL
A12 1" = 1'-0"

1925 Prospect Ave.
Oxandale, VA 22121
(407) 668-1100
(407) 668-9101
www.wawa.com

WAWA
Architects & Peterson
Engineers Planners

PROJECT NAME
WAWA
260 W BALTIMORE PIKE
WAWA, VA 19063

PROJECT NO.
MAS017-M 2017.01-MA
STORE #6661-STO
NEWTOWN RD & STONEY POINT RD
NORFOLK, VA

REVISION SCHEDULE

No.	Description	Date
1	PERMIT SET	05/11/2018
2	PRE-BID REVIEW SET	01/09/2019
3	BID SET	01/09/2019

PROJECT NO.
270577

DATE
05-11-2018

DRAWN
CF-FL

CHECKED
EL

A12