

1 CANOPY ELECTRICAL REFLECTED CEILING PLAN  
1/8" = 1'-0"

Lighting Fixture Schedule						
TYPE	MANUF.	CATALOG NO.	QUANT.	WATTS / LAMP	LAMPS / FIXTURE	MGT.
FD		LED - DECK MOUNT - SLOPED ADAPTOR	24	114 W	1	SURFACE

ALL LIGHT FIXTURES AND LAMPS SUPPLIED BY WAWA, INSTALLED BY G.C.  
COORDINATE FIXTURE COUNT, LOCATIONS AND LAMP OUTPUT WITH SITE LIGHTING ENGINEERING DRAWINGS

TANKS AND CANOPY CONDUIT AND CONDUCTOR NOTES:

THE GENERAL CONTRACTOR SHALL FURNISH AND INSTALL ALL GRC CONDUIT, ASSOCIATED FITTINGS AND WIRE NECESSARY TO PROVIDE A COMPLETE ELECTRICAL SYSTEM FOR THE GAS CANOPY, FUEL TANKS, MUSIC AND INTERCOM SYSTEM.

HOWEVER, THE FOLLOWING CONDUIT SHALL BE PROVIDED AND INSTALLED BY THE CONTRACTOR INDICATED BELOW.

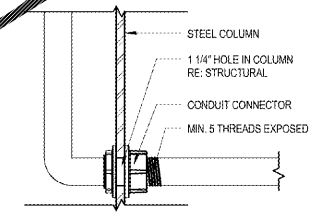
**FUEL TANKS**  
PETROLEUM CONTRACTOR SHALL FURNISH AND INSTALL THE CONDUIT FROM THE EDGE OF THE FUEL TANK CONCRETE PAD AND TERMINATE AT THE TANK EQUIPMENT.

**GAS CANOPY**  
PETROLEUM CONTRACTOR SHALL FURNISH AND INSTALL THE CONDUIT FROM THE EDGE OF THE CONCRETE CANOPY PAD TO THE BASE OF THE CANOPY COLUMNS WHERE THEY WILL MAKE A THREADED CONNECTION (REFER TO DETAIL 4IC1) CANOPY FABRICATOR SHALL FURNISH AND INSTALL THE THREADED CONNECTOR (MIN 5 EXPOSED THREADS) AT THE BASE OF THE CANOPY COLUMN AND CONTINUE UP THROUGH THE COLUMN TO A SEAL OFF AND ISOL AT 2'-4" THEN CONTINUE WITH RIGID CONDUIT TO THE BOTTOM OF THE CANOPY WHERE IT WILL TRANSITION INTO SEALTIGHT CONDUIT AND TERMINATE AT THE FIRST ROW OF LIGHTS. GC SHALL CONNECT INTO THE FIRST ROW OF LIGHTS AND COMPLETE THE ELECTRICAL CANOPY LIGHTING.

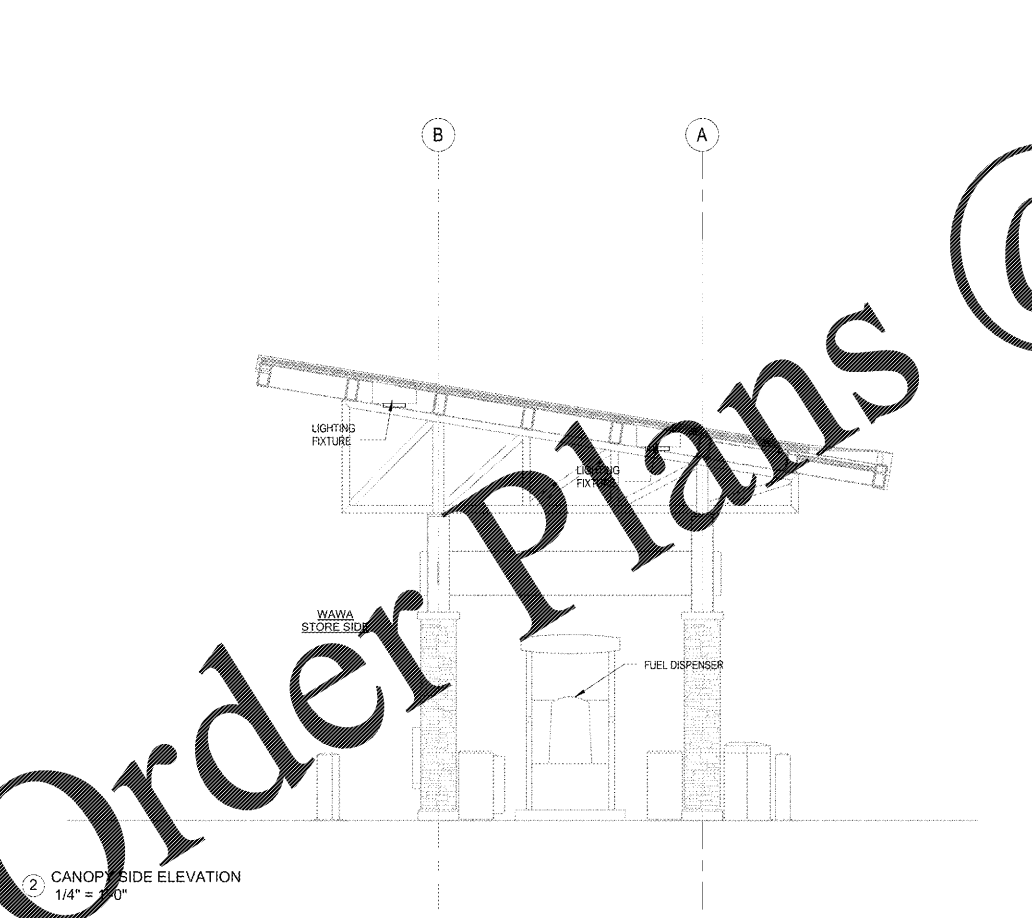
PETROLEUM CONTRACTOR SHALL ALSO INSTALL THE CONDUIT FROM THE EDGE OF THE CONCRETE CANOPY PAD TO THE TERMINATION POINT FOR THE MUSIC AND INTERCOM SYSTEMS.

ELECTRICAL NOTES

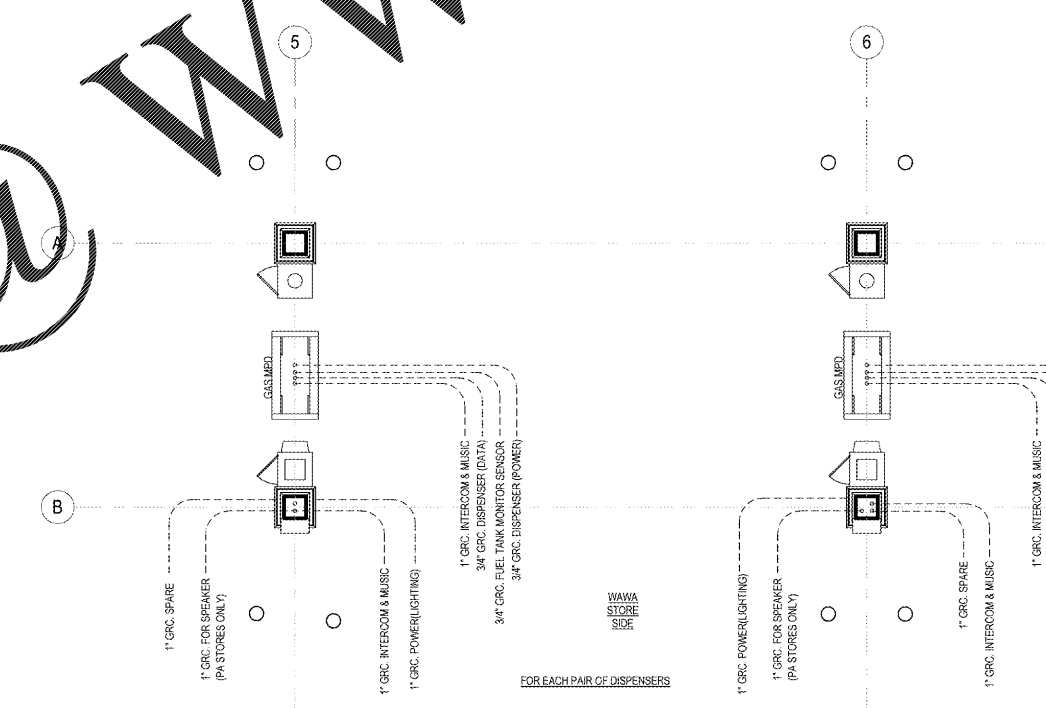
- ALL FIXTURES AND COMPONENTS SHALL BE GROUNDED BY A SEPARATE #10 GROUND WIRE.
- PETROLEUM CONTRACTOR TO PULL WIRING FOR INTERCOM AT CANOPY. PROVIDED BY OTHER CONTRACTOR.
- THE CONDUIT FOR THE 'FD' FIXTURES TO RUN ALONG THE GUTTER AND UNDER THE FIXTURES IN THE FLUTES OF THE DECKING. NO CONDUIT SHOULD BE VISIBLE FROM BELOW THE CANOPY.
- FOR DISPENSER DATA, VEEDEER-ROOT SENSOR, AND INTERCOM MUSIC, PROVIDE CONDUIT FOR ALL CONNECTIONS AS REQUIRED. COORDINATE WITH WAWA CONSTRUCTION MANAGER.
- USE THIS CIRCUIT TO PROVIDE POWER TO 208 VOLT ILLUMINATION SIGN AT THIS LOCATION BETWEEN CANOPY COLUMNS AT APPROXIMATELY 12' AFS.
- ELECTRICAL CONTRACTOR TO COORDINATE WITH PETROLEUM CONTRACTOR AND GENERAL CONTRACTOR TO MAKE SURE THE SEAL OFF FITTINGS AS REQUIRED ARE PROVIDED. CONDUITS ENTERING THE FUEL DISPENSER SHALL BE GROUNDED AND THAT THE ELECTRICAL INSULATION AT THE GAS CANOPY AND FUEL TANKS IS IN ACCORDANCE WITH NEC ARTICLE 514.
- FOR BRANCH CIRCUITS OUT TO CANOPY AREA, IF CIRCUIT LENGTH EXCEEDS 100 FEET WIRE/CONDUIT MUST BE UPSIZED PER CODE TO PREVENT EXCESSIVE VOLTAGE DROP.
- LIGHT FIXTURES PROVIDED BY WAWA SHALL BE INSTALLED BY CANOPY VENDOR. E.C. RESPONSIBLE FOR CONDUIT LAYOUT AND FINAL CONNECTIONS.
- WAWA GOVERNSION, E.C. TO VERIFY EXACT LOCATION WITH WAWA AND ARCHITECTURAL DRAWINGS. E.C. TO RUN WIRING, CONDUIT AND CONNECTIONS TO LOCAL INDUSTRY.



4 THREADED CONNECTION  
3" = 1'-0"



2 CANOPY SIDE ELEVATION  
1/4" = 1'-0"



3 CANOPY CONDUIT LOCATION PLAN  
1/4" = 1'-0"

GASOLINE CONDUIT REQUIREMENTS:

- (1) 1" GRC TO CANOPY COLUMN FOR INTERCOMM/MUSIC
- (1) 1" GRC TO CANOPY COLUMN FOR LIGHTING
- (3) 1" GRC TO EACH DISPENSER:  
(1) POWER, 1 DATA, 1 MUSIC
- (1) 3/4" GRC TO EACH DISPENSER (FUEL TANK MONITOR SENSOR)
- (2) 1" GRC TO EACH TANK CONTAINMENT UNIT, F.E. PETRO POWER (1 POWER, 1 SPARE)
- (1) 3/4" GRC TO EACH TANK CONTAINMENT UNIT (FUEL TANK MONITOR MAGNETOSTRICTIVE PROBE)
- (1) 3/4" GRC TO EACH TANK CONTAINMENT UNIT (FUEL TANK MONITOR SENSOR)
- (1) 3/4" GRC TO EACH TANK CONTAINMENT UNIT (FUEL TANK MONITOR MULTI-PORT FILL SUMP)
- (1) 3/4" GRC TO EACH TANK CONTAINMENT UNIT (FUEL TANK MONITOR BRINE INTERSTITIAL RESERVOIR)
- (1) 1" GRC TO OVERFILL ALARM (ON VENT STACK)
- (1) 1" GRC TO VENT STACK (SPARE)
- (1) 1" GRC TO CANOPY COLUMN FOR SPEAKER (PA STORE ONLY)
- (1) 1" GRC TO CANOPY COLUMN FOR SPARE

1925 Prospect Ave.  
Oxford, MA 01545  
(407) 668-1100  
(407) 668-9101  
www.e-p.com

**Chalaci & Peterson**  
Architects Engineers Planners

**WAWA**  
260 W. BALTIMORE PIKE  
WAWA, VA 19063

PROJECT NAME  
**STRAIGHT 6 GAS CAN. 2017.01-MA**  
STORE #6661- STO  
NEWTOWN RD & STONEY POINT ST  
NORFOLK, VA

Revision Schedule	No.	Description	Date
PERMIT SET	05-11-2018		
PRE-BID REVIEW SET	01/09/2019		
BID SET	01/22/2019		

PROJECT NO. 270577  
DATE 05-11-2018  
DRAWN M.L.B.  
CHECKED J.P.M.

CE1

ELECTRICAL CANOPY PLANS, DETAILS, SCHEDULES