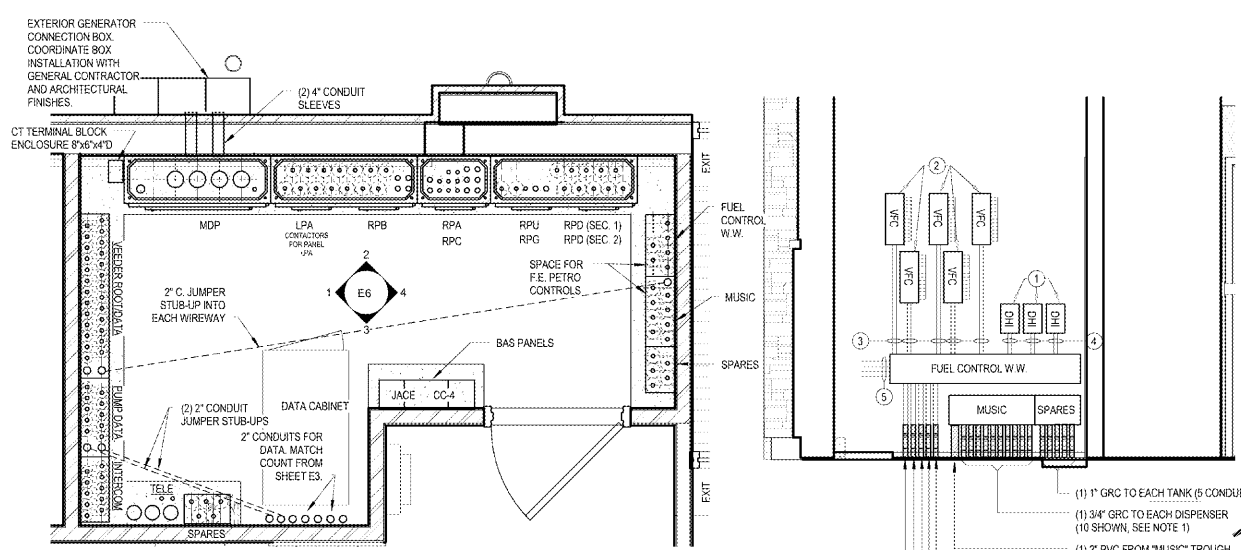
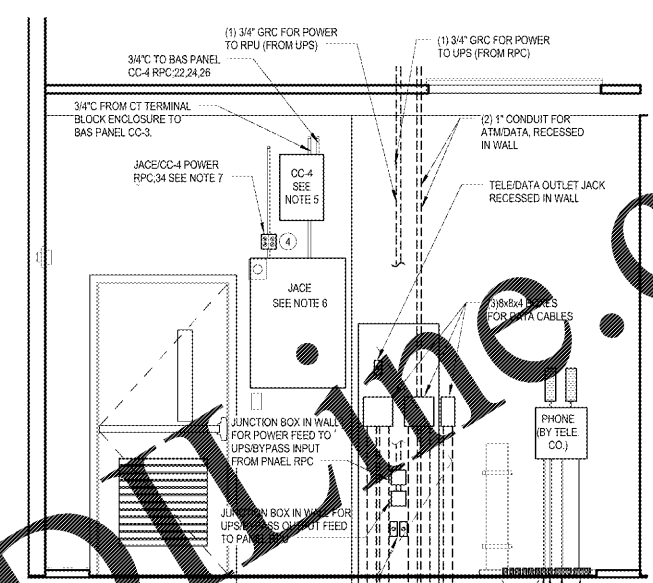


7 GENERATOR CONNECTION BOX ELEVATION
E6 NOT TO SCALE



5 ELECTRICAL ROOM PLAN
E6 NOT TO SCALE



3 South
E6 NOT TO SCALE

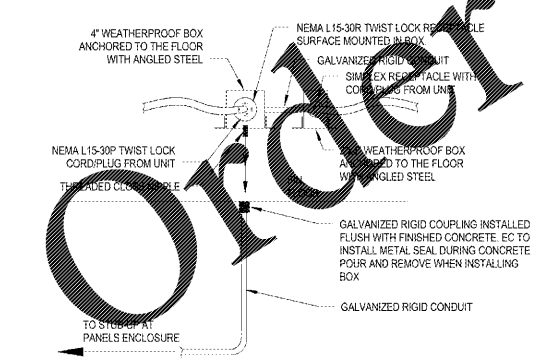
ELECTRICAL ROOM ELEVATION NOTES:

- CONDUIT LAYOUT PLAN SHOWN ON PLAN HAS PROVISIONS FOR 10 DISPENSERS. THE ACTUAL NUMBER OF CONDUITS REQUIRED WILL BE DEPENDENT ON THE CANOPY CONFIGURATION, AND ACTUAL NUMBER OF DISPENSERS INSTALLED. IF FEWER DISPENSERS ARE INSTALLED, AND THEREFORE SUFFICIENT SPACE EXISTS, THE CONDUITS ARE TO BE INSTALLED IN A SINGLE ROW.
- NOT USED.
- SERVICE CONNECT AND METER CABINET ARE SHOWN FOR ILLUSTRATIVE PURPOSES ONLY. REMOTE C.T. CABINET AS INDICATED ON SINGLE LINE DIAGRAM IS PREFERRED INSTALLATION.
- ALL SPARE CONDUITS WHICH TRAVERSE THE HAZARDOUS AREA SHOULD BE PACKED WITH MINERAL FIBER FOLLOWED WITH DUCT SEAL, AND THEN SEALED WITH A THREADED PLUG OR CAP AS APPROPRIATE FOR THE SPECIFIC CONFIGURATION AT EACH END OF THE CONDUIT.
- PANEL CC-4 AND REQUIRED CONDUIT SHALL BE PROVIDED BY BAS CONTRACTOR.
- PANEL JACE AND REQUIRED CONDUIT SHALL BE PROVIDED BY BAS CONTRACTOR.
- JUNCTION BOX, RECEPTACLES, AND ASSOCIATED CONDUIT TO HILL PHOENIX PANEL SHALL BE PROVIDED BY ELECTRICAL CONTRACTOR. JUNCTION BOX SHALL BE SURFACE MOUNTED.

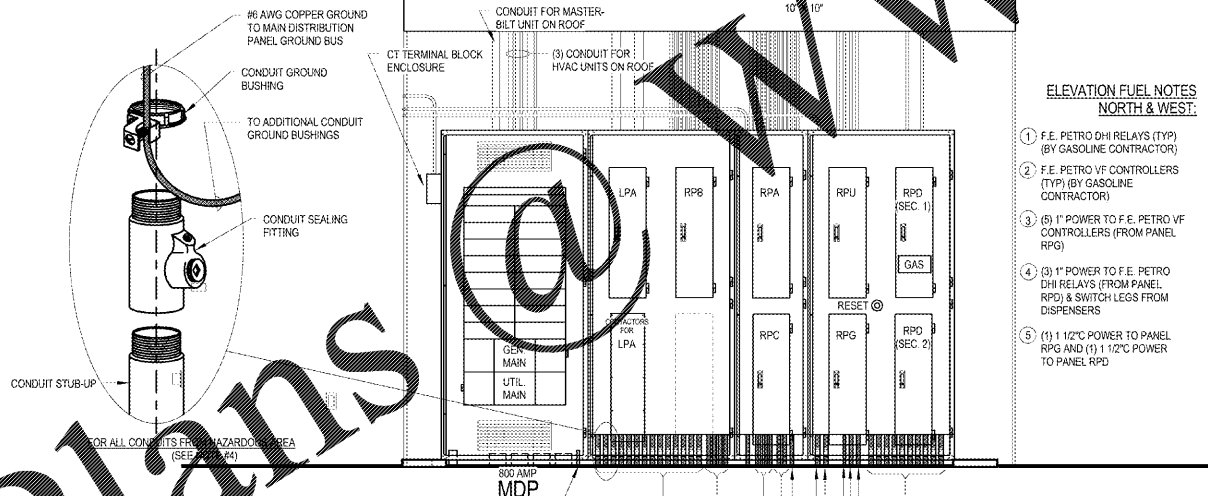
GASOLINE CONDUIT REQUIREMENTS:

- 1" GRC TO EACH CANOPY COLUMN FOR INTERCOM/ CAMERAS (COLUMN CLOSEST TO STORE).
- 1" GRC TO EACH CANOPY COLUMN FOR LIGHTING (COLUMN FURTHEST FROM STORE).
- 1" GRC TO EACH CANOPY COLUMN FOR INTERCOM/ CAMERAS (COLUMN FURTHEST FROM STORE - DOUBLE STACK).
- 3/4" GRC TO EACH DISPENSER (1 POWER, 1 DATA, 1 MUSIC).
- 3/4" GRC TO EACH DISPENSER (FUEL TANK SENSOR).
- 1" GRC TO EACH TANK CONTAINMENT UNIT, F.E. PETRO POWER (1 POWER, 1 SPARE).
- 1" GRC TO EACH TANK CONTAINMENT UNIT (FUEL TANK MAGNETIC PROBE).
- 1" GRC TO EACH TANK CONTAINMENT UNIT (FUEL TANK SENSOR).
- 1" GRC TO EACH TANK CONTAINMENT UNIT (FUEL TANK MULTI-PORT FILL SUMP).
- 1" GRC TO EACH TANK CONTAINMENT UNIT (FUEL TANK BRINE INTERSTITIAL RESERVOIR).
- 1" GRC TO OVERFILL ALARM (ON VENT STACK).
- 1" GRC TO VENT STACK (SPARE).

8 GASOLINE CONDUIT REQUIREMENTS
1/4" = 1'-0"



9 HOT FOOD TABLE OUTLET
1/4" = 1'-0"



ELEVATION FUEL NOTES NORTH & WEST:

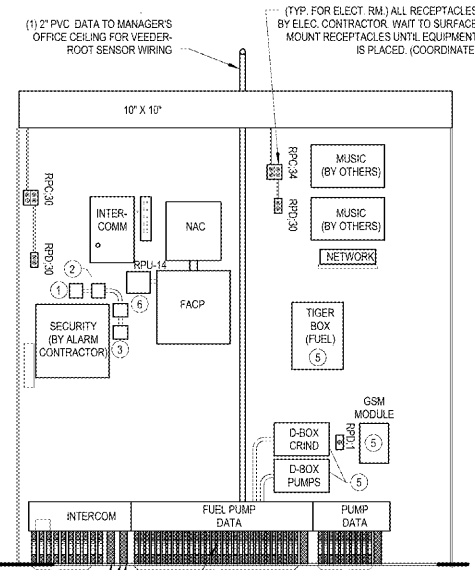
- F.E. PETRO DSI RELAYS (TYP) (BY GASOLINE CONTRACTOR)
- F.E. PETRO V/F CONTROLLERS (TYP) (BY GASOLINE CONTRACTOR)
- 5/8" POWER TO F.E. PETRO V/F CONTROLLERS (FROM PANEL R/P)
- 3/4" POWER TO F.E. PETRO DSI RELAYS (FROM PANEL R/P) & SWITCH LEGS FROM DISPENSERS
- 1" 1/2" POWER TO PANEL R/P AND (1) 1" 1/2" POWER TO PANEL R/P

NOTES EAST & SOUTH:

- DELIVERY DOOR LOCK POWER SUPPLY RPC.32.
- DOOR CHIMES XFMR RPC.32.
- E.C. TO SUPPLY POWER TO LOW VOLTAGE TRANSFORMER FOR BELLBUZZER & CHIMES (COORDINATE WITH ALARM CONTRACTOR)
- JACE POWER RPC.34 SEE NOTE 7.
- BY PETRO CONTRACTOR AS REQUIRED.
- PS3000 RECEPT MTD ON RIGHT SIDE

2 North
E6 NOT TO SCALE

4 West
E6 NOT TO SCALE



1 East
E6 NOT TO SCALE

1925 Prospect Ave.
Oxford, VA 22814
(407) 668-1100
(407) 668-9101
www.c-p.com

Chalaci & Peterson
Architects Engineers Planners

WAWA
280 W BALTIMORE PIKE
WAWA, VA 19063

PROJECT NAME
WAWA U45-FB-LVA-M v2017.01
STORE #6681-STO
Newtown Rd. & Stony Point St.
Norfolk, VA

Revision Schedule

No.	Description	Date
1	PERMIT SET	05/11/2018
2	PRE-BID REVIEW SET	01/09/2019
3	BID SET	01/29/2019

PROJECT NO. 270577
DATE 05-11-18
DRAWN M.L.B.
CHECKED J.M.