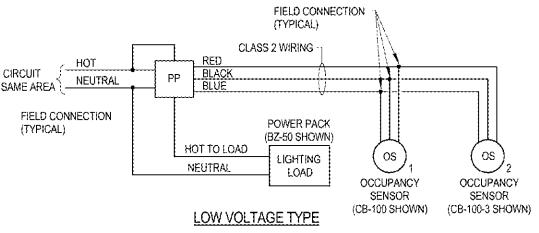


KEYNOTES:

1. ALL LIGHTING BRANCH CIRCUITING SHALL BE ROUTED ABOVE CEILING. EXPOSED CONDUIT OR SEAL-TIGHT IS NOT ACCEPTED.
2. E.C. TO COORDINATE EXACT LOCATION OF J-BOXES WITH SIGN INSTALLER.
3. EMERGENCY BACKUP UNIT FOR ALL LIGHTING FIXTURE IN SELF-SERV WALK-IN. PHILIPS BODINE ELI-S20. SURFACE MOUNT TO WALL ABOVE CEILING.
4. CONNECT CIRCUITING FOR TYPE "DL1E" AHEAD OF LIGHTING CONTACTOR SWITCHING.
5. CIRCUITING AND CONNECTION FROM JUNCTION BOX TO EQUIPMENT LIGHTING SHALL BE THE RESPONSIBILITY OF THE GENERAL CONTRACTOR. E.C. TO LEAVE 15' COIL OF WIRE IN CEILING SPACE FOR THIS CIRCUIT.
6. PROVIDE MOTION DETECTOR OCCUPANCY SENSORS WITH DETECTION DISTANCE RATINGS TO ALLOW THE SENSORS TO FUNCTION PROPERLY AT THE LOCATIONS SHOWN ON THIS PLAN.
7. SWITCH TO CONTROL LIGHTS IN SELF-SERV WALK-IN COOLER.
8. PROVIDE SENSOR SWITCH IN-CRIM-10-11 OCCUPANCY SENSOR.
9. FIXTURE SHALL BE SECURED TO WALL AT (2) POINTS TO PREVENT MOVEMENT/ROTATION.
10. PROVIDE POWER TO THE EMERGENCY BALLAST OF THIS FIXTURE AHEAD OF ANY SWITCHING, DIRECT FROM BREAKER. CIRCUIT TO NORMAL FIXTURE BALLAST THROUGH LIGHTING CONTACTOR.
11. ORIENT FIXTURE WITH MIRROR SIDE TOWARD WALL.
12. WALL MOUNTED LIGHTED WAWA SIGN WITH DISCONNECT SWITCH (MULBERRY #30482, SINGLE POLE, 20 AMP), DISCONNECT SWITCH TO BE LOCATED WITHIN SITE OF SIGN, TRANSFORMER TO BE MOUNTED TO WALL ABOVE CEILING. SEE DETAIL #17 ON SHEET A11.1 FOR MOUNTING OF ELECTRICAL BOX AND SIGN.

ELECTRICAL NOTES:

1. ELECTRICAL CONTRACTOR SHALL INSTALL LIGHTING FIXTURES AND LAMPS FURNISHED BY WAWA.
2. NO SHARED NEUTRAL BETWEEN CIRCUITS SHALL BE PERMITTED.
3. REFER TO PROJECT SPECIFICATIONS FOR EXTENT OF LIGHTING PRODUCT SPECIFICATION/SERVING SAME AREA.
4. LIGHTING FIXTURES SUPPORTED BY CEILING GRID SHALL ALSO BE SUPPORTED BY HANGWIRES. FIXTURES WEIGHING LESS THAN 10 LBS SHALL BE SUPPORTED BY (1) 12 GAUGE WIRE CONNECTED FROM FIXTURE TO STRUCTURE ABOVE. FIXTURES WEIGHING MORE THAN 10 LBS SHALL BE SUPPORTED BY (2) 12 GAUGE WIRES CONNECTED FROM OPPOSITE CORNERS OF THE FIXTURE TO THE STRUCTURE ABOVE. HANGWIRE CONNECTIONS SHALL MEET APPROVAL OF THE A.H.U.



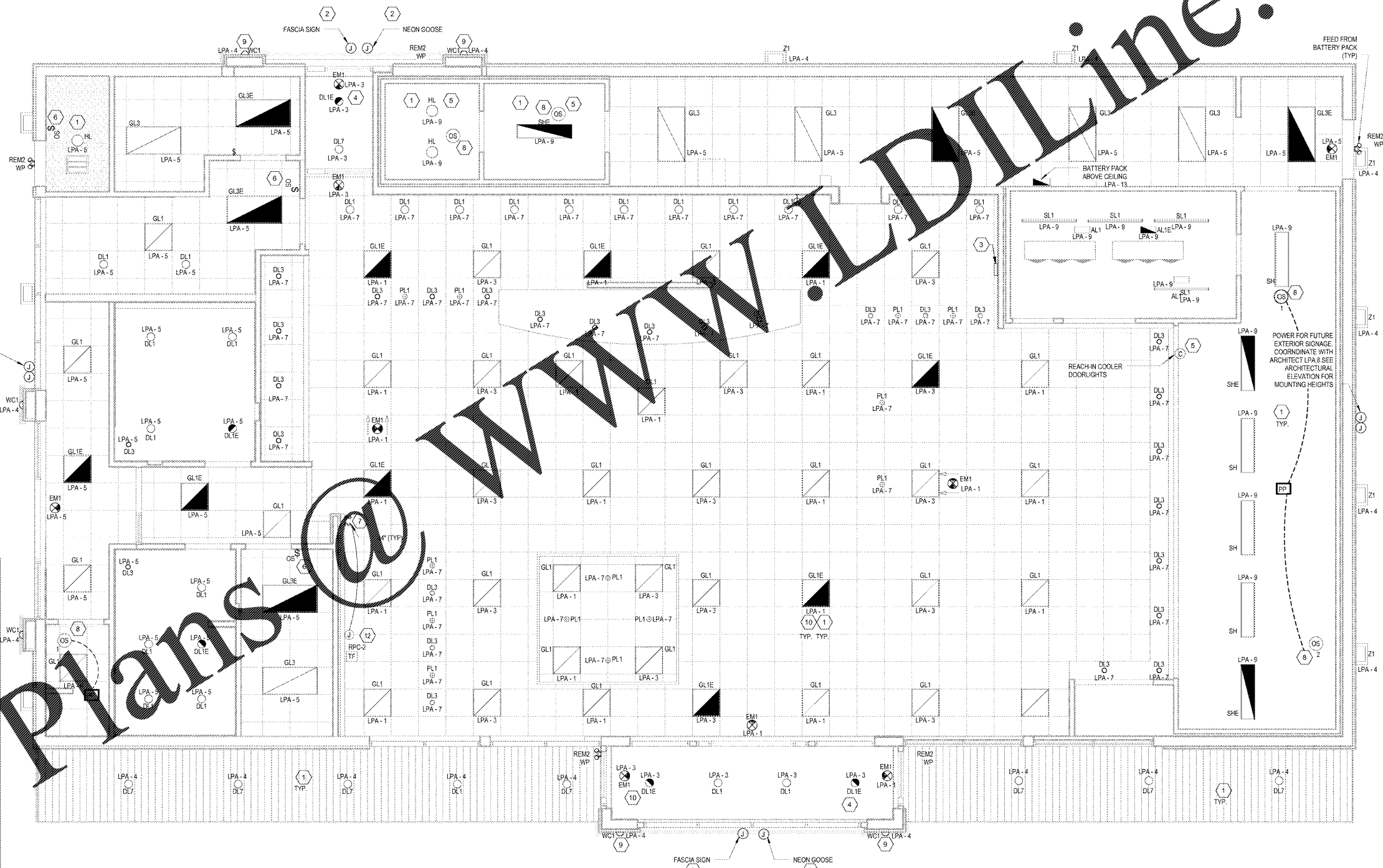
NOTES:

1. KEEP CLASS 1 AND CLASS 2 WIRING SEPARATE. WHERE SEPARATION IS NOT POSSIBLE, USE A 60V INSULATED CABLE WITH A SHIELD FOR CLASS 2 WIRING. CONNECT THE SHIELD TO GROUND TO PROVIDE BETTER NOISE IMMUNITY.
2. WIRE COLORS SHOWN ARE FOR REFERENCE ONLY BASED ON WATTSTOPPER OCCUPANCY SENSORS. REFER TO MANUFACTURERS INSTRUCTION FOR ACTUAL WIRING INSTRUCTIONS.
3. REFER TO LIGHTING SYMBOL LEGEND FOR OCCUPANCY SENSOR TYPES AND DESCRIPTION.
4. ALL SENSORS SHALL BE INSTALLED IN THE LOCATIONS INDICATED ON LIGHTING PLAN.
5. PASSIVE INFRARED SENSORS SHALL BE AIMED SO AS TO MAXIMIZE THE COVERAGE AND TO AVOID DETECTION OUTSIDE OF THE AREA TO BE CONTROLLED. ADJUST SENSITIVITY FOR INFRARED SENSORS TO MAXIMUM AND ADJUST DOWN ON AN AS NEEDED BASIS.
6. WHENEVER POSSIBLE, SENSORS SHALL BE INSTALLED 6 FEET FROM AN AIR SUPPLY REGISTER AND ON A VIBRATION FREE SURFACE.
7. INITIAL TIME DELAY SETTINGS FOR ALL SENSORS SHALL BE SET TO NO LESS THAN 15 MINUTES.

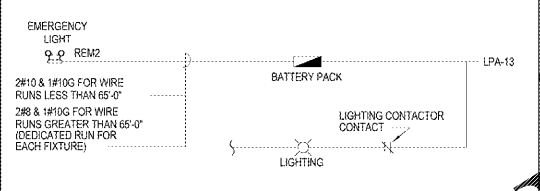
LIGHT FIXTURE SCHEDULE

TYPE	SPECIFICATION
AL1	12" WET LOCATION SURFACE MOUNTED ADJUSTABLE LINEAR LED
AL1E	12" WET LOCATION SURFACE MOUNTED ADJUSTABLE LINEAR LED WITH REMOTE EMERGENCY BACKUP POWER
DL1	RECESSED 6" LED DOWNLIGHT WET LOCATION
DL1E	RECESSED 6" LED DOWNLIGHT WET LOCATION ELECTRONIC BALLAST AND EMERGENCY BALLAST
DL3	RECESSED 4" LED DOWNLIGHT WET LOCATION
DL7	RECESSED 6" LED DOWNLIGHT WET LOCATION WITH GOOF RING
EL1	WET LOCATION LED MODULES WITH REMOTE POWER SUPPLY - APPROXIMATELY (8) 30 MODULE STRINGS
EM1	POLYCARBONATE EXIT SIGN
GL1	2X2 RECESSED LED DIRECT/INDIRECT
GL1E	2X2 RECESSED LED DIRECT/INDIRECT, EMERGENCY BATTERY PACK
GL3	2X4 RECESSED LED DIRECT/INDIRECT
GL3E	2X4 RECESSED LED DIRECT/INDIRECT AND EMERGENCY POWER BATTERY
HL	LED VAPOR TIGHT JELLY JAR WITH GLASS GLOBE CAST GUARD
PL1	5" DIAMETER PENDANT WITH WHITE ACRYLIC DIFFUSER AND SCREW IN LED LAMP WITH ESCUTCHEON PLATE
REM2	WET LOCATION EMERGENCY (DUAL HEADS) FED FROM BATTERY PACK (SEE DIAGRAM THIS SHEET)
RF	WALL MOUNTED WET LOCATION FIXTURE W/ GUARD (FOR USE IN ROOF POCKET. SEE DWG E4)
SH	GASKETED LED WRAP AROUND UL WET LABEL WITH LOW TEMPERATURE DRIVER
SHE	GASKETED LED WRAP AROUND UL WET LABEL WITH LOW TEMPERATURE DRIVER AND EMERGENCY BATTERY PACK
SL1	4" WET LOCATION SURFACE MOUNTED LINEAR LED
WC1	WALL MOUNTED EXTERIOR LED FIXTURE. WEATHER-PROOF. UL WET LABEL.
Z1	EXTERIOR WALL MOUNT LED. UL WET LABEL WALL PACK

POWER FOR FUTURE EXTERIOR SIGNAGE. COORDINATE WITH ARCHITECT LPA-2. SEE ARCHITECTURAL ELEVATION FOR MOUNTING HEIGHTS



BATTERY POWERED EMERGENCY LIGHTING DIAGRAM



SYMBOL LEGEND

	BATTERY UNIT TO MEET ALL STATE & LOCAL CODES. MOUNT TO WALL ABOVE CEILING AT LOCATION SHOWN ON PLAN.		WIRE COIL FOR FUTURE USE
	EXIT LIGHT - CEILING MOUNTED DOUBLE FACE		JUNCTION BOX WITH WIRE
	EXIT LIGHT - CEILING MOUNTED SINGLE FACE		JUNCTION BOX CEILING MTD.
	EXIT LIGHT - WALL MOUNTED		SWITCH OFF LINE
	EMERGENCY REMOTE HEAD (DOUBLE)		SWITCH
			SWITCH WITH TIME DELAY
			DETECTIVE OCCUPANCY SENSOR (SET SENSOR TO 20 MINUTES SHUT OFF)
			MUZAK SPEAKER WITH VOLUME CONTROL
			WALL MOUNT MUZAK SPEAKER WITH VOLUME CONTROL

1 ELECTRICAL LIGHTING PLAN
1/4" = 1'-0"

1745 Prospect Ave.
Oxford, MD 21124
(410) 668-1100
(410) 668-9101
www.c-p.com

Chahaci & Peterson
Architects Engineers Planners

WAWA
280 W BALTIMORE PIKE
WAWA, PA 19083

PROJECT NAME
WAWA U45-FB-LV-M v2017.01
STORE #6661-STO
Newtown Rd. & Stony Point St.
Norfolk, VA

REVISION SCHEDULE

No.	Description	Date
1	PERMIT SET	05/11/2018
2	PRE-BID REVIEW SET	01/09/2019
3	BID SET	01/29/2019

PROJECT NO.
270577

DATE
05-11-18

DRAWN
MLB

CHECKED
JM

Copyright © 2018, Chahaci & Peterson, Inc. All rights reserved. No part of this document may be reproduced or transmitted in any form or by any means, electronic or mechanical, including photocopying, recording, or by any information storage and retrieval system, without the prior written permission of Chahaci & Peterson, Inc.