

OUTSIDE AIR CALCULATION

AREA SERVED	AREA (SQFT)	CFM /SQFT	UNOCCUPIED MHI O.A. REQUIRED	# PEOPLE	CFM PERSON	PEOPLE O.A. REQ'D (CFM)	COMBINED O.A. REQ'D (CFM)	SYSTEM VENTILATION EFFICIENCY	TOTAL O.A. SUPPLIED (CFM)	TOTAL O.A. DEFICIT (CFM)
COFFEE DELIVERY	141	0.06	9	2	7.5	15	24	.891	27	7
VESTIBULE	61	0.12	7	1	0	0	7	.891	6	1
WASH RM.	117	0.06	7	0	0	0	7	.891	8	-1
BACKROOM	1456	0.06	87	12	7.5	90	177	.891	159	27
FOOD SVC	216	0.15	39	1	7.5	7.5	47	.891	53	-6
OFFICES	151	0.18	27	1	7.5	7.5	35	.984	36	-15
RETAIL	434	0.18	78	2	7.5	15	93	.984	95	-2
OFFICES	245	0.06	15	3	5	15	30	.814	37	7
RETAIL	496	0.06	27	5	7.5	38	65	.814	79	14
RRS/MISC	284	0	0	0	0	0	0	.814	0	0
VESTIBULE	162	0.06	10	0	0	0	10	.814	12	2

NOTES:

- OCCUPANCY LOAD VENTILATION RATES ARE BASED ON NET OCCUPYABLE SPACE IN ACCORDANCE WITH THE JURISDICTION'S LATEST ACCEPTED VERSION OF THE INTERNATIONAL MECHANICAL CODE, TABLE 403.3.
- ANTICIPATED NUMBER OF PEOPLE IS BASED ON AN OCCUPANCY LOAD FACTOR (# PEOPLE/SF) VALUE (BASED ON THE JURISDICTION'S LATEST ACCEPTED VERSION OF THE INTERNATIONAL MECHANICAL CODE, TABLE 403.3).

ABBREVIATIONS

D/B'F DRY BULB DEGREES FAHRENHEIT	LD LINEAR DIFFUSER
A/C AIR CONDITIONING	L.P. LOW PRESSURE
AC AIR CURTAIN	MAX MAXIMUM
A.F.F. ABOVE FINISHED FLOOR	MBH 1000 BTU PER HOUR
BAS BUILDING AUTOMATION SYSTEM	MCA MINIMUM CIRCUIT AMPACITY
BTU BRITISH THERMAL UNIT	MHI MINIMUM
CD CEILING DIFFUSER	MOCP MAXIMUM OVER CURRENT PROTECTION
CFM CUBIC FEET PER MINUTE	MPH MILES PER HOUR
CO2 CARBON DIOXIDE	O.A. OUTSIDE AIR
D DIAMETER	O.C. ON CENTER
EER ENERGY EFFICIENCY RATIO	PVC POLYVINYL CHLORIDE
EF EXHAUST FAN	REQ'D REQUIRED
FFH FAN FORCED HEATER	RTU PACKAGED ROOF TOP HVAC UNIT
G GRILLE	SCH SCHEDULE
G.C. GENERAL CONTRACTOR	SEER SEASONAL ENERGY EFFICIENCY RATIO
GFCI GROUND FAULT CIRCUIT INTERRUPTER	SF SQUARE FOOT
HP HORSEPOWER	TYP. TYPICAL
IEER INTEGRATED ENERGY EFFICIENCY RATIO	V VOLTS
IN INCHES WATER COLUMN	W WITH
LBS. POUNDS	WB'F WET BULB DEGREES FAHRENHEIT

MECHANICAL GENERAL NOTES

- REFER TO WRITTEN BOOK SPECIFICATIONS FOR ADDITIONAL INFORMATION.
- THE WORK TO BE DONE UNDER THESE SPECIFICATIONS AND THE DRAWINGS CONSISTS OF FURNISHING ALL EQUIPMENT, MATERIALS, LABOR AND SERVICES, AND PERFORMING ALL OPERATIONS TO COMPLETE THE MECHANICAL CONSTRUCTION WORK FOR THIS PROJECT. ANY WORK NOT SPECIFICALLY COVERED BY THESE SPECIFICATIONS OR INDICATED ON THE MECHANICAL/ELECTRICAL/PLUMBING PLANS, BUT NECESSARY TO COMPLETE OR PERFECT ANY PART OF THIS INSTALLATION IN A SUBSTANTIAL MANNER, SHALL BE PROVIDED WITHOUT EXTRA COST TO OWNER.
- THE TERM "FURNISH" SHALL MEAN TO OBTAIN AND SUPPLY TO THE JOB SITE. THE TERM "INSTALL" SHALL MEAN TO FIX IN POSITION AND CONNECT FOR USE. THE TERM "PROVIDE" SHALL MEAN TO FURNISH AND INSTALL. THE TERM "MECHANICAL WORK" OR "WORK" SHALL MEAN ALL LABOR, MATERIAL, EQUIPMENT, SCAFFOLDING, RIGGING, TOOLS, SUPERVISION, SERVICES AND OTHER INCIDENTALS NECESSARY FOR COMPLETE AND OPERABLE INSTALLATION. THE CONTRACTOR SHALL FURNISH AND INSTALL ALL EQUIPMENT, MATERIALS AND LABOR TO PROVIDE A COMPLETE AND OPERATIONAL SYSTEM AS INDICATED ON THE DESIGN DOCUMENTS.
- CONTRACTOR SHALL OBTAIN ALL PERMITS, INSPECTIONS AND APPROVALS PRIOR TO AND DURING CONSTRUCTION.
- ALL MATERIALS, EQUIPMENT AND INSTALLATIONS SHALL BE IN STRICT ACCORDANCE WITH JURISDICTION'S LATEST ACCEPTED VERSION OF THE INTERNATIONAL BUILDING CODE, MECHANICAL, SMACNA, UL, STATE CODES, LOCAL CODES, MANUFACTURER'S RECOMMENDATIONS, AND ALL AUTHORITIES HAVING JURISDICTION. CONTRACTOR SHALL PROVIDE ALL ROOFING OPENINGS, FLASHINGS, AUXILIARY STEEL, THREADED RODS, VIBRATION ISOLATORS, TURNBUCKLES, ETC. TO SUPPORT HIS EQUIPMENT ON OR FROM THE STRUCTURE.
- CONTRACTOR SHALL COORDINATE ALL WORK WITH OTHER TRADES AND IN FIELD PRIOR TO INSTALLATION OF ANY WORK. REPORT ALL CONFLICTS IMMEDIATELY TO ARCHITECT AND ENGINEER.
- THE DRAWINGS INDICATE DIAGRAMMATICALLY THE EXTENT, GENERAL CHARACTER AND LOCATION OF THE WORK INCLUDED. OFFSETS OR CHANGES IN DUCT SHAPE TO AVOID STRUCTURAL OR OTHER INTERFERENCES, AND WORK INDICATED BUT HAVING MINOR DETAILS OBVIOUSLY OMITTED SHALL BE PROVIDED WITHOUT EXTRA COST.
- ANY CHANGES AND/OR MODIFICATIONS MUST BE REVIEWED AND APPROVED BY THE ENGINEER OR OWNER'S REPRESENTATIVE PRIOR TO CONSTRUCTION.
- REMOVE ALL TRASH, DEBRIS AND DEMOLITION MATERIAL FROM PREMISES AT THE END OF EACH WORK DAY.
- SCHEDULE ALL WORK, CUTTING AND BUILDING SERVICE INTERRUPTIONS WITH BUILDING OWNER AND CONSTRUCTION MANAGER, PRIOR TO COMPLETING WORK.
- ALL DUCT DIMENSIONS ARE INSIDE CLEAR DIMENSIONS.
- THE MAXIMUM FLEXIBLE DUCT LENGTH PERMITTED IS 8'-0". THIS DUCTWORK SHALL BE INSTALLED WITHOUT KINKS OR 90° BENDS.
- ALL FLEXIBLE DUCTWORK SHALL BE FLEX-VENT TYPE KM INSULATED WITH POLYMER INNER FILM AND METALIZED OUTER JACKET, OR APPROVED EQUAL. SIZE SHALL BE SAME AS DIFFUSER NECK SIZE, UNLESS INDICATED OTHERWISE.
- FIELD ADJUST THE DIRECTION OF FLOW FOR ALL SUPPLY AIR DEVICES SO THAT THE DEVICES DO NOT BLOW DIRECTLY INTO SOFFITS, CURTAIN WALLS, REFRIGERATED CASES OR EXHAUST HOODS.
- ALL NEW AND EXISTING PIPES AND DUCTS SHALL HAVE UL FIRE RATED SLEEVES AND/OR FIRE RATED DAMPERS, WHEN PASSING THROUGH FIRE RATED CONSTRUCTION.
- COORDINATE LOCATION OF NEW DUCTWORK, AIR DEVICES AND EQUIPMENT WITH LIGHT FIXTURES, SPRINKLER PIPING AND HYDRONIC PIPING.
- CONTRACTOR SHALL VERIFY FIELD CONDITIONS AT THE SITE AND NOTIFY THE OWNER/ENGINEER OF ANY DISCREPANCIES PRIOR TO COMMENCING WORK.
- ALL TEMPERATURE AND HUMIDITY SENSORS SHALL BE INSTALLED 54" ABOVE FINISHED FLOOR UNLESS NOTED OTHERWISE ON PLAN. COORDINATE FINAL LOCATIONS WITH EQUIPMENT, FURNITURE, TENANT AND ARCHITECT PRIOR TO INSTALLATION.
- ALL DUCTWORK SHALL BE GALVANIZED STEEL CONSTRUCTED AT 2" PRESSURE CLASS. ALL CONCEALED DUCTWORK FROM CEILING TRUSSES SHALL BE INSULATED WITH 1-1/2" FIBERGLASS DUCT WRAP WITH WIRE SUPPORT BANDS ON 24" CENTERS. ALL CONCEALED DUCTWORK ABOVE CEILING TRUSSES SHALL BE INSULATED WITH 1-1/2" FIBERGLASS DUCT WRAP WITH WIRE SUPPORT BANDS ON 24" CENTERS. ALL INTERIOR EXPOSED DUCTWORK BELOW TRUSSES SHALL BE INSULATED WITH 1" RIGID FIBERGLASS DUCT BOARD WITH FOIL AND SCRIM FACING. ALL EXTERIOR EXPOSED DUCTWORK SHALL BE INSULATED WITH 2" RIGID FIBERGLASS DUCT BOARD WITH WEATHERPROOF MEMBRANE.
- VERIFY ALL EQUIPMENT VOLTAGES, WIRING REQUIREMENTS, AND REQUIRED BREAKER SIZES WITH THE ELECTRICAL CONTRACTOR AND TO ORDER.
- ALL ACCESS DOORS REQUIRED IN GENERAL CONSTRUCTION ARE TO BE PROVIDED AND INSTALLED BY THE GENERAL CONTRACTOR. IT IS THE RESPONSIBILITY OF THE MECHANICAL CONTRACTOR TO IDENTIFY SIZE, TYPE AND LOCATION OF SUCH DOORS FOR PROPER ACCESS TO ALL CONCEALED MECHANICAL EQUIPMENT, VALVES AND OTHER RELATED DEVICES. THE MECHANICAL CONTRACTOR SHALL NOTIFY THESE REQUIREMENTS TO THE ARCHITECT PRIOR TO COMMENCING WORK.
- AFTER THE HEATING AND AIR CONDITIONING SYSTEM INSTALLATIONS ARE COMPLETE THE CONTRACTOR SHALL BALANCE THE SYSTEM AND PRESENT OWNER & ARCHITECT WITH A WRITTEN BALANCING REPORT BY A CERTIFIED INDEPENDENT TESTING LAB. DAMPER HANDLES SHALL BE FASTENED INTO DUCTWORK WITH SHEETMETAL SCREWS AFTER BALANCING TO ASSURE CORRECT BALANCED AIRFLOW.
- PROVIDE ELBOWS OR TEES WITH TURNING VANES FOR CHANGES IN SUPPLY DUCT. PROVIDE DAMPER HANDLES FOR ALL DAMPERS WITH LOCKING QUADRANTS FOR ALL BRANCHES AND TAKE-OFFS. PROVIDE RAISED QUADRANTS FOR INSULATED DUCTWORK. ALL PROVIDE DAMPER HANDLES TO PROTRUDE NEATLY THROUGH DUCT INSULATION AND BE TAGGED SO THAT THEY ARE CLEARLY VISIBLE.
- PROVIDE FLEXIBLE CONNECTIONS AT ALL "T" CONNECTIONS TO VIBRATING EQUIPMENT. THESE CONNECTIONS SHALL BE INSTALLED IN CLOSE PROXIMITY TO SUCH EQUIPMENT.
- THE MECHANICAL CONTRACTOR SHALL HAVE A CERTIFIED HVAC TECHNICIAN FROM THE UNIT MANUFACTURER PROVIDE AN EQUIPMENT OPERATION CHECK AFTER UNIT START-UP AND PRIOR TO THE CERTIFIED AIR BALANCING. THE CERTIFICATION SIGNATURE BY THE TECHNICIAN MUST BE INCLUDED IN THE GENERAL CONTRACTOR CLOSING DOCUMENTS FOR THIS PROJECT.

ELECTRIC HEATING UNITS

DESIGNATION	FFH-1
MANUFACTURER	QMARK
TYPE	FAN FORCED CLG HEATER
MODEL	EFF-1500
FACTORY HEATING CAPACITY	1500 WATTS
FAN CFM	150
THERMOSTAT	INTEGRAL
LOCATION	CEILING
ELECTRICAL	120V/1/60 12.5 AMPS
SERVICE	METER CLOSET
OPTIONS	1/2/3

- COORDINATE MOUNTING FRAME TYPE WITH ARCHITECTURAL DRAWINGS.
- PROVIDE FACTORY ACCESSORIES AS REQUIRED FOR RECESSED CEILING INSTALLATION.
- PROVIDE WITH INTERNAL DISCONNECT SWITCH, FACTORY FAN DELAY SWITCH, FACTORY HIGH TEMPERATURE CUTOFF SWITCH, AND INTEGRAL THERMOSTAT.

FAN SCHEDULE

DESIGNATION	EF-1	EF-2
MANUFACTURER	COOK	COOK
TYPE	CENTRIFUGAL	CENTRIFUGAL
MODEL	ACED-100C15DH	GN-148
CFM	275	50
STATIC PRESSURE	0.5"WG	0.25"WG
FAN RPM	1480	680
ELECTRICAL (V/PH/Hz)	115/1/60	115/1/60
MOTOR HORSEPOWER	0.125	28 WATTS
STYLE	DOWNBLAST	INLINE
OPTIONS	1, 2, 3, 4, 5, 6	1, 2, 3, 4, 7, 8
SERVICE	TOILETS & JANITOR	METER CLOSET/CO2 STORAGE

OPTIONS:

- DISCONNECT SWITCH
- DIRECT DRIVE MOTOR
- SPEED CONTROLLER (MOUNT ON FAN)
- WIRE FOR CONTINUOUS OPERATION.
- BIRD SCREEN
- PROVIDE W/18" CURB
- PROVIDE GRAVITY BACKDRIFT DAMPER
- FAN SHALL BE WIRED TO EMERGENCY SHUTOFF SWITCH PROVIDED BY OTHERS. REFERENCE ARCHITECTURAL AND ELECTRICAL DRAWINGS.

AIR BALANCE SCHEDULE

SYSTEM	CFM
RTU-1	+805
RTU-2	+680
RTU-3	+250
EF-1	-275
EF-2	-50
BUILDING POSITIVE PRESSURE	+990

HVAC ROOF TOP UNIT SCHEDULE

MARK	AREA SERVED	NOMINAL TONS	SUPPLY CFM	RETURN CFM	FAN DATA				WATTAGE	VOLTAGE	PHASE	MCA	MOCP	WEIGHT (LBS)	MIN. UNIT COOLING CAPACITY (BTU/H)	BASIS OF DESIGN					NOTES	
					HP	VOLTS	PHASE	MOUNTING HEIGHT								TOTAL COOLING MBH	SENSIBLE COOLING MBH	EOD (°F)	EWB (°F)	AMBIENT (°F)		EER (SEER)
RTU-1	RETAIL	7.5	2260	1280	1.0	110	104	2	208 V	3	410	50	142	84.6	1412	12.5	L25	LENNOX	LGH02HM	2-16		
RTU-2	FOOD SERVICE	12.5	3750	1600	1.0	130	104	2	208 V	3	67	80	1346	132.3	1064	78.0	83.4	93/77	11.0	LENNOX	LCH150H4B	1-12
RTU-3	RETAIL	5.0	2050	1000	1.0	130	104	2	208 V	3	35	50	1004	68.4	56.5	76.4	61.8	93/77	12.0	LENNOX	LGH02H4T	2-14

NOTES:

- PROVIDE EXPOSED FLUSH WALL MOUNTED TEMPERATURE SENSOR MODEL 78M2.
- PROVIDE THE FACTORY INSTALLED SUPPLY AND RETURN SMOKE DETECTORS.
- PROVIDE WITH FACTORY INSTALLED CURB.
- PROVIDE WITH FACTORY INSTALLED VAPORIZER W/ OA HOOD.
- PROVIDE WITH FACTORY MOUNTED EXHAUST FAN W/ HOOD.
- PROVIDE WITH FACTORY FUSE SWITCH.
- PROVIDE WITH FACTORY AWAY PLATED MERV 8 FILTERS.
- PROVIDE WITH FACTORY LOW PRESSURE SWITCHES. LOSS OF CHARGE SWITCH, FREEZE PROTECTION SWITCH, AMT SHORT CYCLE TIMER, BELT DRIVE, AND M S A.V. FAN OPTION WHERE AVAILABLE.
- PROVIDE WITH FACTORY INSTALLED LONKALK GAS INTERFACE.
- COORDINATE WITH FACTORY INSTALLED WEATHERPROOF DISCONNECT SWITCH.
- PROVIDE WITH FACTORY INSTALLED 15 AMP GFCI SERVICE OUTLET WITH WEATHERPROOF COVER. COORDINATE WITH ELECTRICAL CONTRACTOR TO PROVIDE FIELD WIRING TO RECEPTACLE.
- PROVIDE WITH SHOCK POINT POWER CONNECTION.
- PROVIDE WITH FACTORY CORROSION PROTECTION FOR APPLICATIONS WITHIN 5 MILES OF SALT/CRACKS WATER.
- PROVIDE WITH HUMIDITROL OPTION.
- PROVIDE REMOTE WALL MOUNTED COMBINATION TEMPERATURE/HUMIDITY SENSOR MODEL 21W66.
- PROVIDE WITH FACTORY WALL MOUNTED CO2 SENSOR FOR INTERLINK WITH BUILDING AUTOMATION SYSTEM.

AIR CURTAIN SCHEDULE

MARK	AREA SERVED	MANUFACTURER	MODEL	NOZZLE CFM	FAN MOTORS			MOUNTING HEIGHT	NOTES
					HP	VOLTS	PHASE		
AC-1	DELIVERY STAGING	POWERED AIRE	BCE-148	2155	(1) 1/2	120	1	7'-2"	1, 2, 3, 4, 5

NOTES:

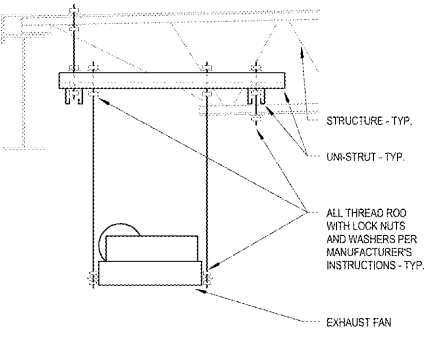
- MOUNT INSIDE BUILDING ABOVE DOOR AT 7'-2" A.F.F. MOUNTING HEIGHT IS FROM BOTTOM OF AIR CURTAIN.
- PROVIDE ALL NECESSARY MOUNTING BRACKETS AND ACCESSORIES.
- PROVIDE WITH MODEL 38-300 COMMERCIAL MAGNETIC REED DOOR SWITCH.
- AIR CURTAIN CONTROLLED BY MAGNETIC REED DOOR SWITCH, FAN ON WHEN DOOR IS OPEN.
- NO SUBSTITUTIONS PERMITTED.

AIR DEVICE SCHEDULE

TYPE MARK	MANUFACTURER	MODEL	SERVICE	DESCRIPTION	MOUNTING TYPE	MATERIAL	FACE SIZE	NECK SIZE	NOTES
CD-1	PRICE	AMD	SUPPLY	LOUVERED FACE FUNCTIONAL DIFFUSER	LAY-IN	ALUMINUM	8"x8"	NECK+3"	1
CD-2	PRICE	AMD	SUPPLY	LOUVERED FACE FUNCTIONAL DIFFUSER	SURFACE	ALUMINUM	12"x12"	NECK+5"	3
CD-3	PRICE	AMD	SUPPLY	LOUVERED FACE FUNCTIONAL DIFFUSER	SURFACE	ALUMINUM	8"x8"	NECK+5"	3
CD-4	PRICE	AMD	SUPPLY	LOUVERED FACE FUNCTIONAL DIFFUSER	LAY-IN	ALUMINUM	8"x8"	NECK+5"	3
CD-5	ACUTHERM	ST-HC	SUPPLY	VAV PLAQUE FACE DIFFUSER	LAY-IN	ALUMINUM	6"x6"	24"x24"	6
CD-6	ACUTHERM	ST-HC	SUPPLY	VAV PLAQUE FACE DIFFUSER	LAY-IN	ALUMINUM	8"x8"	24"x24"	2.6
G-1	PRICE	630FF	TRANSFER	LOUVERED FACE FILTER RETURN GRILLE	LAY-IN	ALUMINUM	20"x20"	NECK+3-3/4"	--
G-2	PRICE	630FF	TRANSFER	LOUVERED FACE FILTER RETURN GRILLE	SURFACE	ALUMINUM	14"x14"	NECK+3-3/4"	--
G-3	PRICE	630FF	EXHAUST	LOUVERED FACE FILTER RETURN GRILLE	SURFACE	ALUMINUM	8"x8"	NECK+3-3/4"	--
G-4	PRICE	630	EXHAUST	LOUVERED FACE RETURN GRILLE	SURFACE	ALUMINUM	10"x10"	NECK+1-3/4"	--
G-5	PRICE	630	TRANSFER	LOUVERED FACE RETURN GRILLE	SURFACE	ALUMINUM	6"x6"	NECK+1-3/4"	--
LD-1	PRICE	TBD4	SUPPLY	24" INSULATED PLENUM W/ (3) 1" SLOTS	LAY-IN	ALUMINUM	8"	N/A	4.5
LD-2	PRICE	TBD4	SUPPLY	48" INSULATED PLENUM W/ (3) 1" SLOTS	LAY-IN	ALUMINUM	10"	N/A	4.5
LD-3	PRICE	TBD4	SUPPLY	48" INSULATED PLENUM W/ (4) 1" SLOTS	LAY-IN	ALUMINUM	12"	N/A	4.5

NOTES:

- FOR LAY-IN CEILING, PROVIDE WITH 18" ROUND NECK ADAPTER. PROVIDE WITH FACTORY SQUARE TO ROUND NECK ADAPTER MODEL "SR".
- FACE SIZE SHALL BE EQUAL TO DIFFUSER NECK SIZE.
- PROVIDE WITH FACTORY PATTERN STD.
- PROVIDE WITH TYPE 6 BEVELLED SURFACE MOTOR FRAME AND FACTORY SQUARE TO ROUND NECK ADAPTER MODEL "SR".
- PROVIDE WITH ALUMINUM INTERNAL INSULATION WITH COATED FIBERBOARD. EXTERNALLY INSULATE PLENUM UPON INSTALLATION WITH DUCT WRAP INSULATION.
- PROVIDE WITH CUTTER NOTCH OPTIONS AS REQUIRED WHEN USED IN 24" T-BAR CEILING.
- PROVIDE WITH MANUAL AUTOMATIC CHANGE-OVER THERMOSTAT FOR COOLING AND HEATING MODES.
- FILTERS IN RETURN GRILLES PROVIDED SOLELY FOR MAINTENANCE PURPOSES. OMIT FILTER UPON INSTALLATION.



1 NOT TO SCALE

HVAC LEGEND

SYMBOL	DESCRIPTION
[Symbol: 10x8] [Symbol: 8'x8']	NEW RECTANGULAR OR ROUND DUCT
[Symbol: 12'ø]	FLEXIBLE DUCT
[Symbol: Arrow through plan]	SUPPLY AIR DUCTWORK UP THROUGH PLAN
[Symbol: Arrow through plan]	RETURN AIR DUCTWORK UP THROUGH PLAN
[Symbol: Arrow through plan]	EXHAUST AIR DUCTWORK UP THROUGH PLAN
[Symbol: Arrow with turning vanes]	90° ELBOW WITH TURNING VANES
[Symbol: Box with control damper]	MANUAL FLEXIBLE CONTROL DAMPER
[Symbol: Box with diffuser]	4 WAY SUPPLY DIFFUSER
[Symbol: Box with diffuser]	3 WAY SUPPLY DIFFUSER
[Symbol: Box with diffuser]	2 WAY OPPOSED SUPPLY DIFFUSER
[Symbol: Box with diffuser]	2 WAY CORNER SUPPLY DIFFUSER
[Symbol: Box with diffuser]	RETURN AIR DEVICE
[Symbol: Box with diffuser]	EXHAUST AIR DEVICE
[Symbol: Box with diffuser]	AIR CURTAIN
[Symbol: Box with diffuser]	LINEAR SLOT DIFFUSER WITH PLENUM
[Symbol: Circle with sensor]	TEMPERATURE SENSOR
[Symbol: Circle with sensor]	COMBINATION TEMPERATURE/HUMIDITY SENSOR
[Symbol: Circle with sensor]	CO2 SENSOR
[Symbol: Circle with sensor]	TYPE MARK CFM
[Symbol: Box with RTU-10]	MECHANICAL EQUIPMENT TAG
[Symbol: Line with condensate piping]	CONDENSATE PIPING
[Symbol: Circle with diffuser]	EF-X ROOF MOUNTED EXHAUST FAN
[Symbol: Circle with diffuser]	EF-X INLINE EXHAUST FAN
[Symbol: Circle with diffuser]	RTU-X PACKAGED ROOFTOP AIR CONDITIONER

1925 Respect Ave.
Orlando, FL 32814
(407) 663-1100
(407) 663-9101
www.aep.com

Chalaci & Peterson
Architects Engineers Planners

PROJECT NAME: WAWA
260 W BALTIMORE PIKE
WAWA, VA 19063

PROJECT NAME: WAWA L45-FB-LVA-M v2017.01
STORE #8661-STO
Newtown Rd & Stony Point St.
Norfolk, VA

Revision Schedule	Date
No. Description	Date
PERMIT SET	05/11/2018
PRE-BID REVIEW SET	01/09/2019
BID SET	01/29/2019