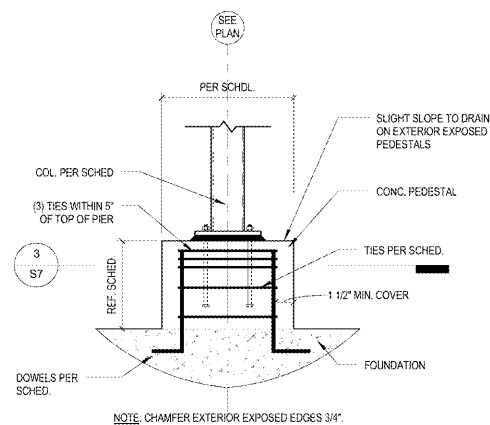
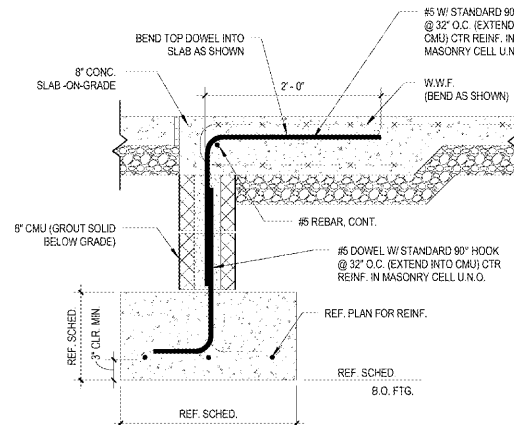


12 ELECTRICAL ROOM CURB
S7 1 1/2" x 1 1/2"



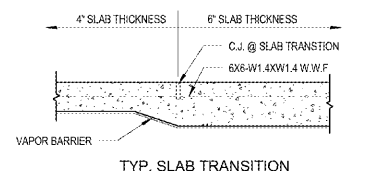
8 TYPICAL PEDESTAL
S7 3 1/2" x 1 1/2"



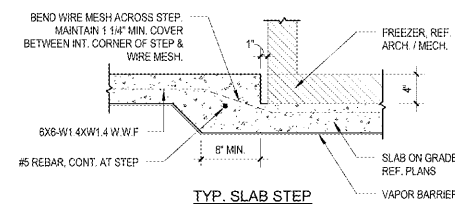
4 SLAB EDGE STOREFRONT AND DOORWAYS
S7 1" x 1 1/2"

GENERAL SHEET NOTES

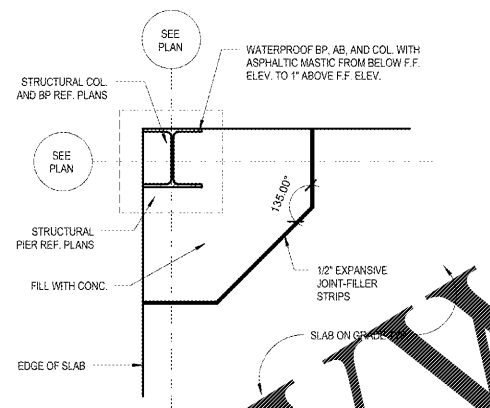
- SEE GENERAL NOTES AND SPECIFICATIONS FOR ADDITIONAL REQUIREMENTS NOT SHOWN HERE.
- ALL CONTINUOUS REINFORCEMENT SHALL BE LAP SPICED AT CORNERS USING "L" BARS.



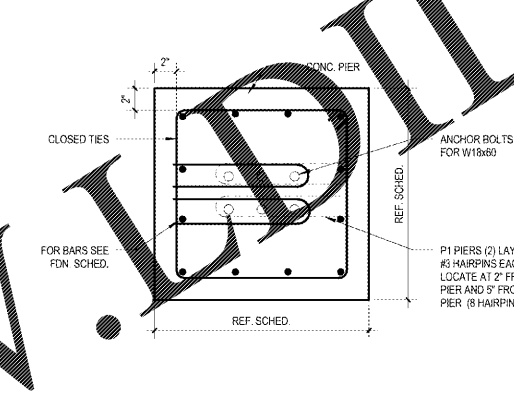
11 SLAB TRANSITION - TYPICAL
S7 1" x 1 1/2"



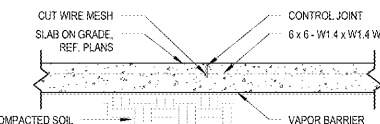
11 SLAB STEP
S7 1" x 1 1/2"



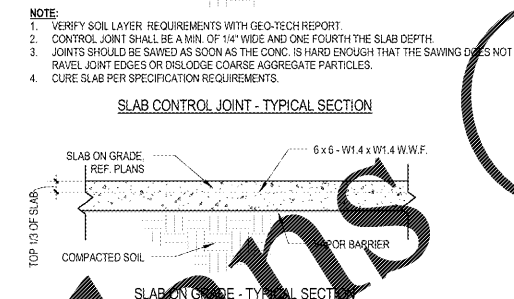
7 ISOLATION JOINT CORNER
S7 1" x 1 1/2"



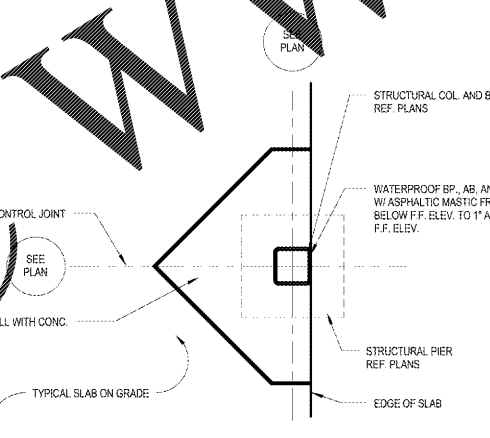
3 PIER SECTION
S7 1 1/2" x 1 1/2"



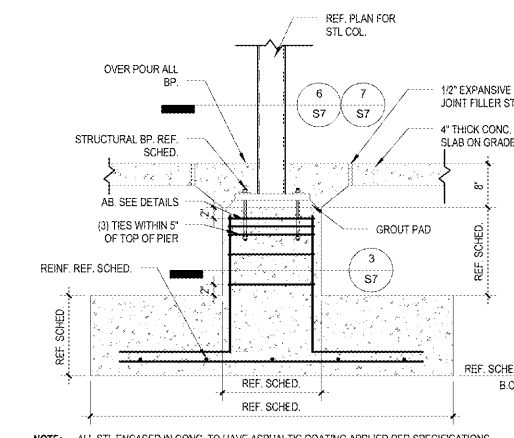
10 FOUNDATION DETAIL
S7 1" x 1 1/2"



10 SLAB CONTROL JOINT - TYPICAL SECTION
S7 1" x 1 1/2"

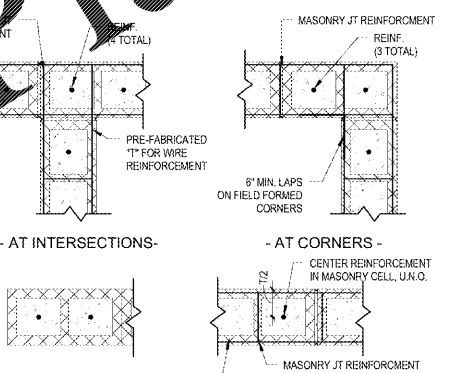


6 ISOLATION JOINT AT WALL
S7 1" x 1 1/2"



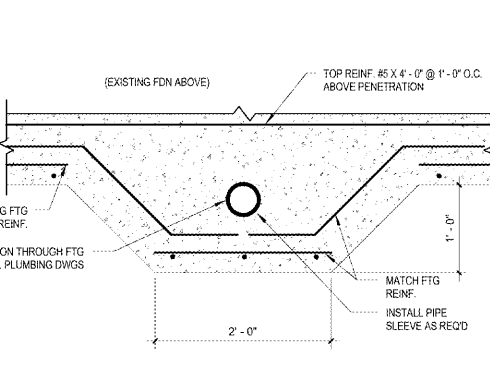
2 TYPICAL COLUMN FTG
S7 3 1/2" x 1 1/2"

NOTE: ALL STL. ENCASED IN CONC. TO HAVE ASPHALTIC COATING APPLIED PER SPECIFICATIONS

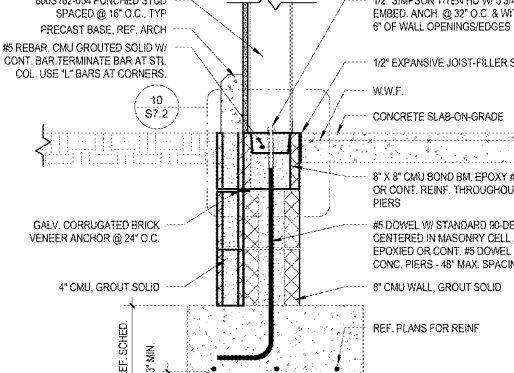


9 TYPICAL CMU DETAILS
S7 1" x 1 1/2"

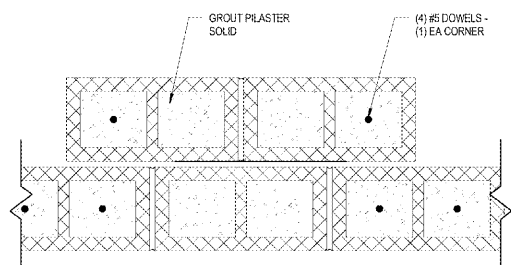
NOTE: SEE TYP. WALL SECTIONS FOR REINFORCING SIZE AND SPACING REQUIREMENTS.



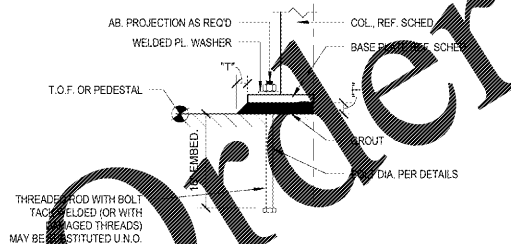
5 FOUNDATION STEP
S7 1" x 1 1/2"



1 TYPICAL WALL AND FOOTING SECTION
S7 1" x 1 1/2"



14 CMU PILASTER SUPPORT
S7 1 1/2" x 1 1/2"



13 ANCHOR BOLT AND GROUT PLACEMENT DETAIL
S7 1 1/2" x 1 1/2"

NOTE: GROUT TO BE PLACED AND SHALL EXTEND A MIN. OF "T" BEYOND THE FACE OF THE BASE PL. "T" = 1 1/2" FOR AB. DIA. UP TO 1 1/2". "T" = 2" FOR AB. DIA. 1 1/2" AND GREATER.

1925 Prospect Ave.
Oxford, PA 17003
(407) 663-1100
(407) 663-9101
www.c-p.com

C
Chiaci & Peterson
Architects Engineers Planners

CLIENT NAME
WAWA
280 W. BALTIMORE PIKE
WAWA, PA 19063

PROJECT NAME
WAWA U45-FB1-VA-M V2017.01
STORE #6681-STO
NEWTOWN RD & STONEY POINT ST
NORFOLK, VA

FOUNDATION DETAILS

No.	Description	Date
2170577	PERMIT SET	05/11/2018
	PRE-BID REVIEW SET	01/09/2019
	BID SET	01/29/2019

S7