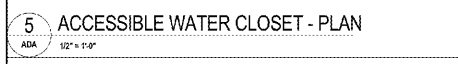
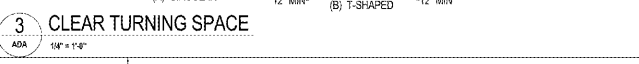


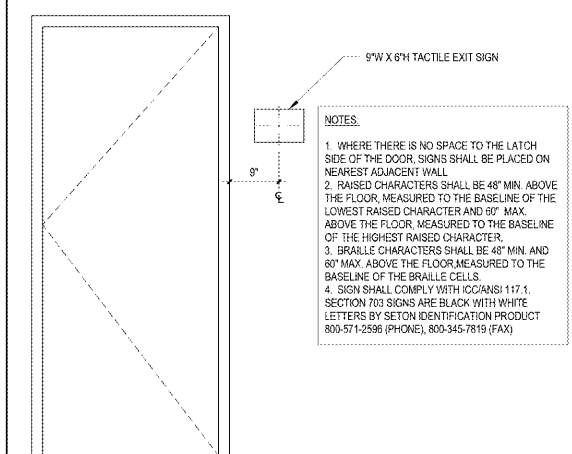
4 ADA RESTROOM SIGNAGE
ADA 3\"/>



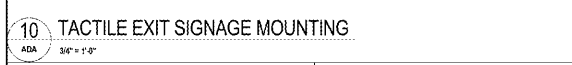
5 ACCESSIBLE WATER CLOSET - PLAN
ADA 12\"/>



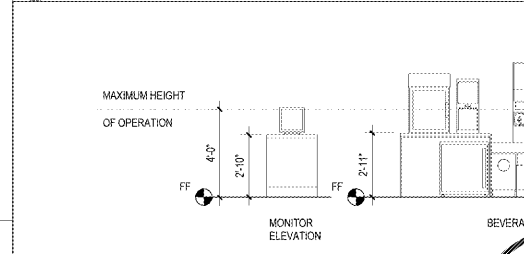
3 CLEAR TURNING SPACE
ADA 18\"/>



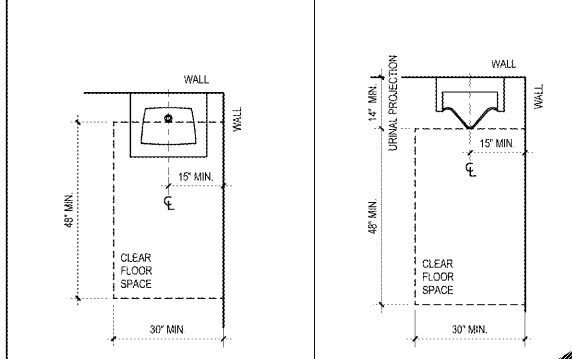
9 GRAB BAR DETAIL
ADA 3\"/>



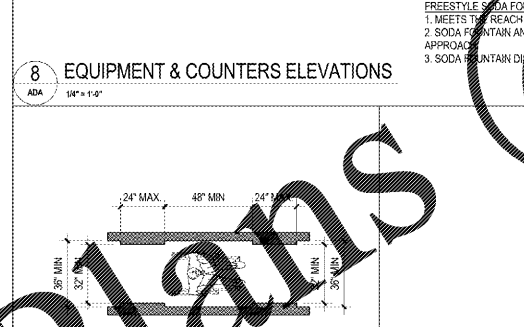
10 TACTILE EXIT SIGNAGE MOUNTING
ADA 36\"/>



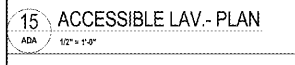
8 EQUIPMENT & COUNTERS ELEVATIONS
ADA 18\"/>



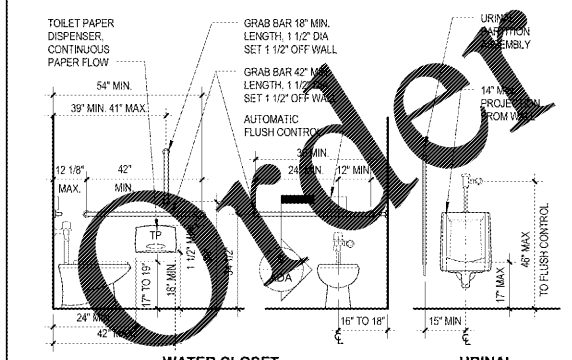
15 ACCESSIBLE LAV. - PLAN
ADA 12\"/>



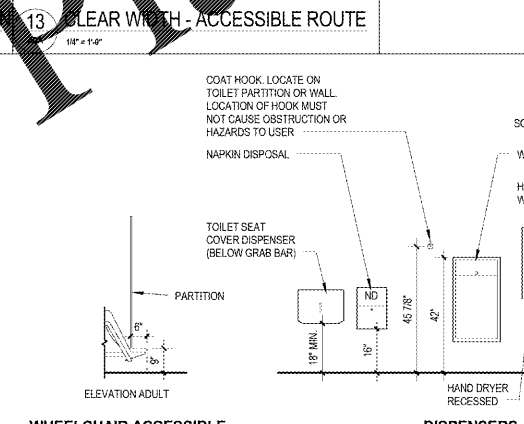
13 CLEAR WIDTH - ACCESSIBLE ROUTE
ADA 18\"/>



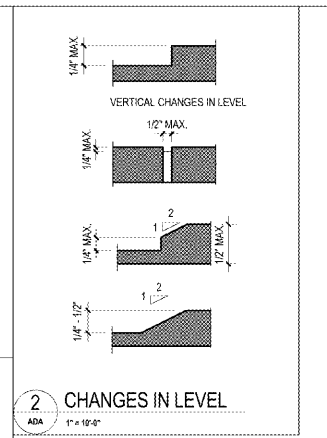
14 ACCESSIBLE URINAL - PLAN
ADA 12\"/>



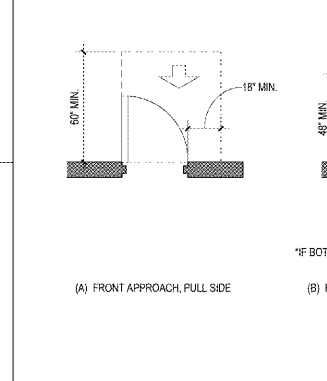
21 ACCESSIBILITY - RESTROOMS BARRIER FREE ELEVATIONS
ADA 36\"/>



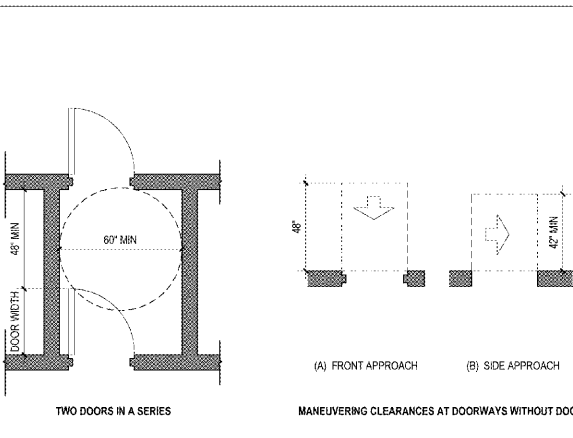
11 CLEAR WIDTH HINGED DOOR
ADA 38\"/>



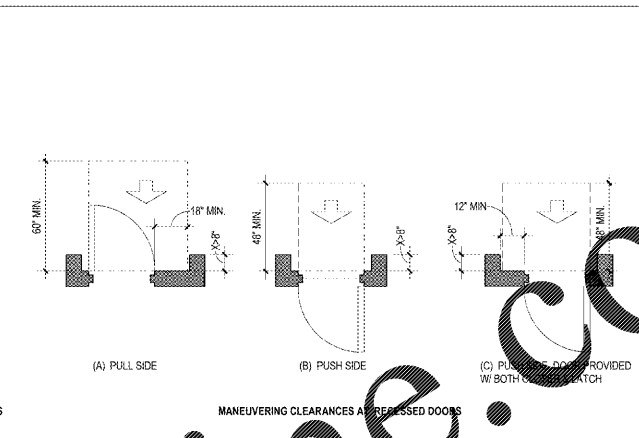
2 CHANGES IN LEVEL
ADA 1\"/>



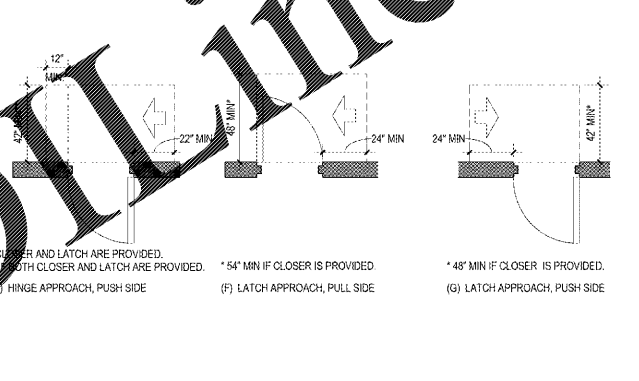
7 MANEUVERING CLEARANCE AT DOORS AND DOORWAYS
ADA 18\"/>



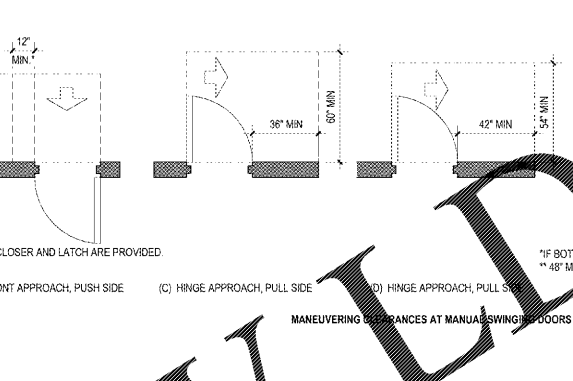
19 COAT HOOK DETAIL
ADA 36\"/>



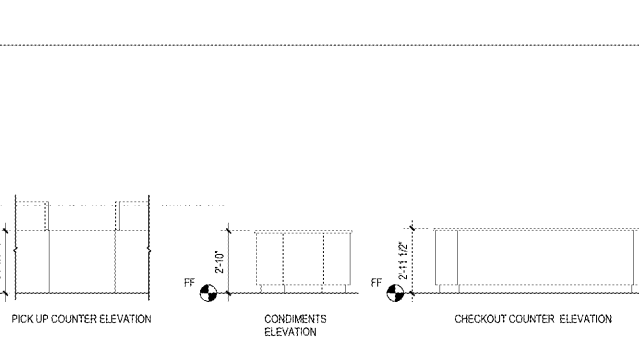
16 ACCESSIBLE REACH
ADA 18\"/>



18 TIME CLOCK DETAIL
ADA 38\"/>



20 PROTRUDING OBJECTS
ADA 18\"/>



17 TIME CLOCK ACCESSIBLE REACH
ADA 38\"/>

4
Chahaci & Peterson
Architects Engineers Planners

1925 Respect Ave.
Oxandale, MD 21122
(410) 668-1100
(410) 668-9101
www.c4-p.com

WAWA
260 W BALTIMORE PIKE
WAWA, PA 19063

PROJECT NAME: **WAWA U45-FB1-VA-M v2017.01**
STORE #8661-STO
Newtown Rd. & Stony Point St.
Norfolk, VA

Revision Schedule

No.	Description	Date
1	PERMIT SET	05/11/2018
2	PRE-BID REVIEW SET	01/09/2019
3	BID SET	01/29/2019

PROJECT NO. 21057
DATE 05-11-18
DRAWN Author
CHECKED Checker

ADA

ACCESSIBILITY REQUIREMENTS