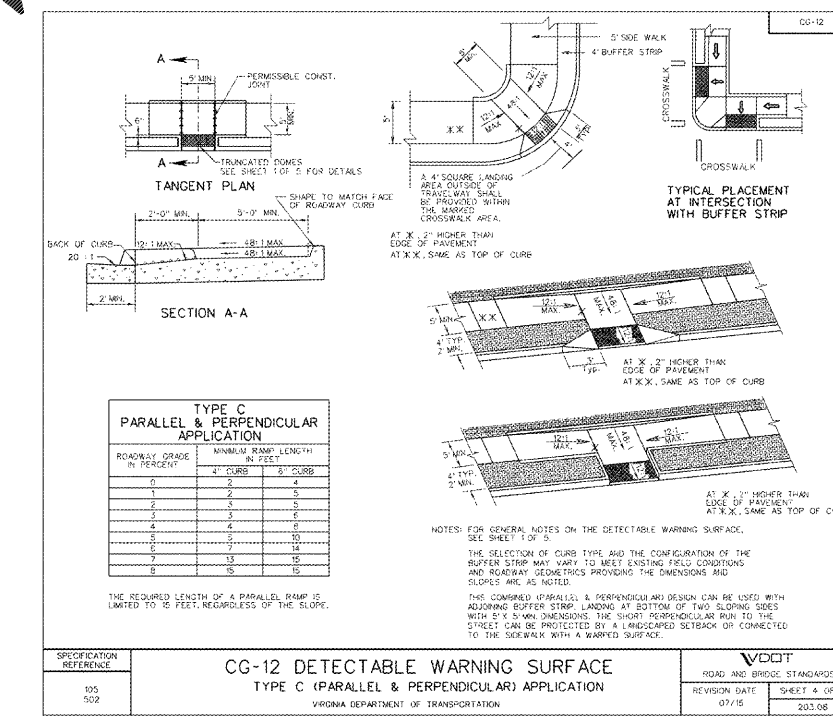
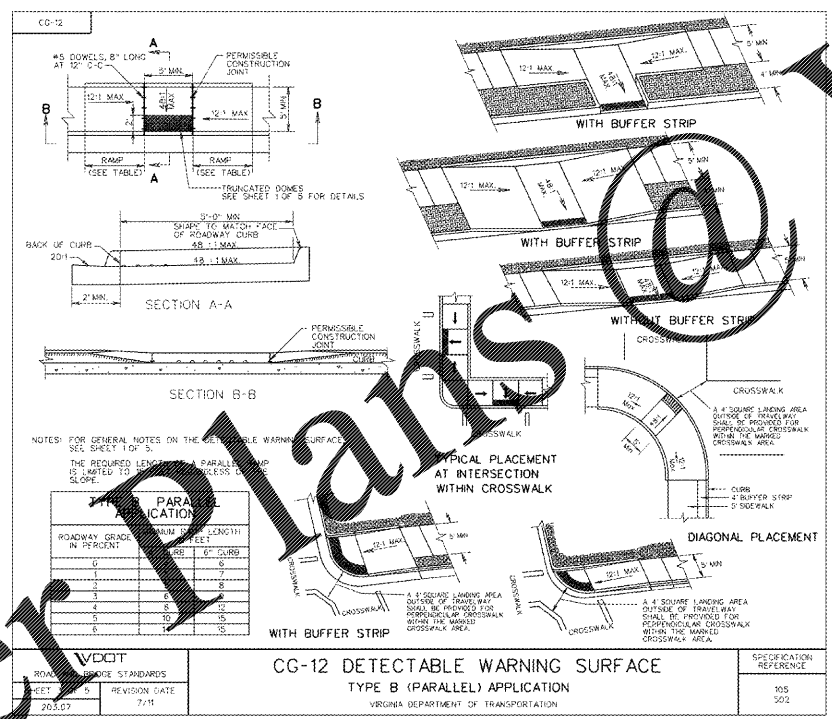
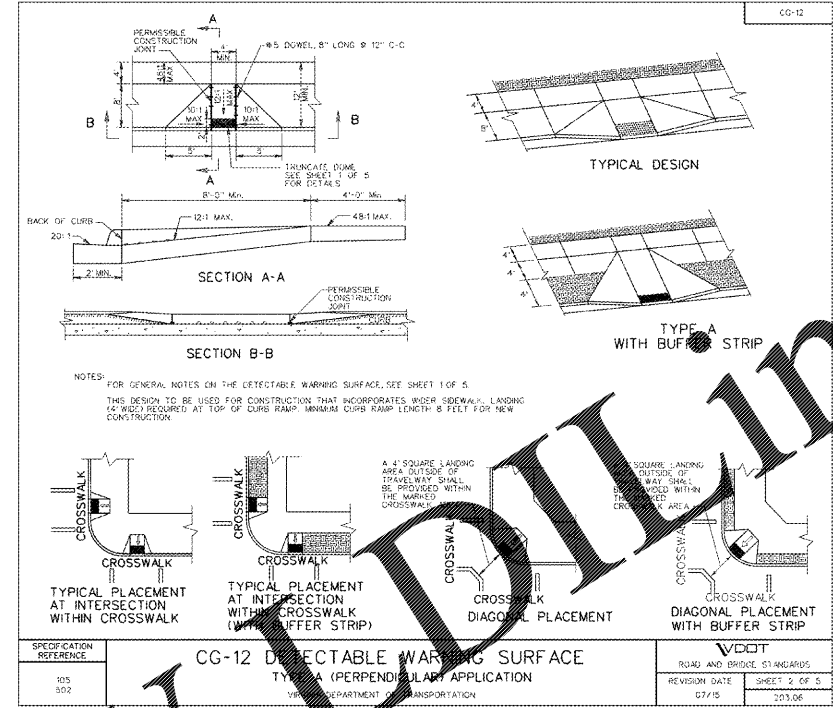
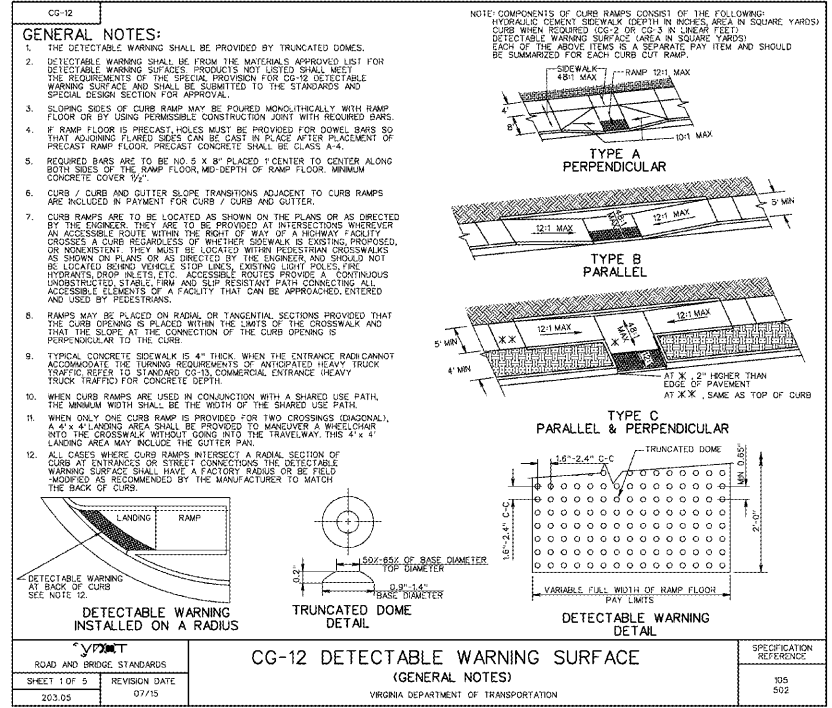


Project: Wawa at Newtown and Stony Point, Wawa, VA. Date: 08/24/2018. Drawn by: J. Leary. Checked by: J. Leary. Scale: AS SHOWN. Project No: 116607003. Sheet No: CS-503.



Order Plans @ www.kimley-horn.com

**Kimley»Horn**

© 2018 KIMLEY-HORN AND ASSOCIATES, INC.  
 1700 WELLOW LAWN DR., SUITE 200, RICHMOND, VA 23230  
 PHONE: 804-673-3882  
 WWW.KIMLEY-HORN.COM

**COMMONWEALTH OF VIRGINIA**  
 J. Randall Royal  
 Lic. No. 14950  
 8/24/18  
 PROFESSIONAL ENGINEER

**SITE DETAILS**  
 WAWA AT NEWTOWN AND STONEY POINT  
 PREPARED FOR WAWA  
 CITY OF NORFOLK, VIRGINIA

KHA PROJECT	DATE	SCALE	DESIGNED BY	DRAWN BY	CHECKED BY
116607003	08/24/2018	AS SHOWN	LEW	LEW	JY

REVISIONS  
 No. DATE BY

SHEET NUMBER  
**CS-503**