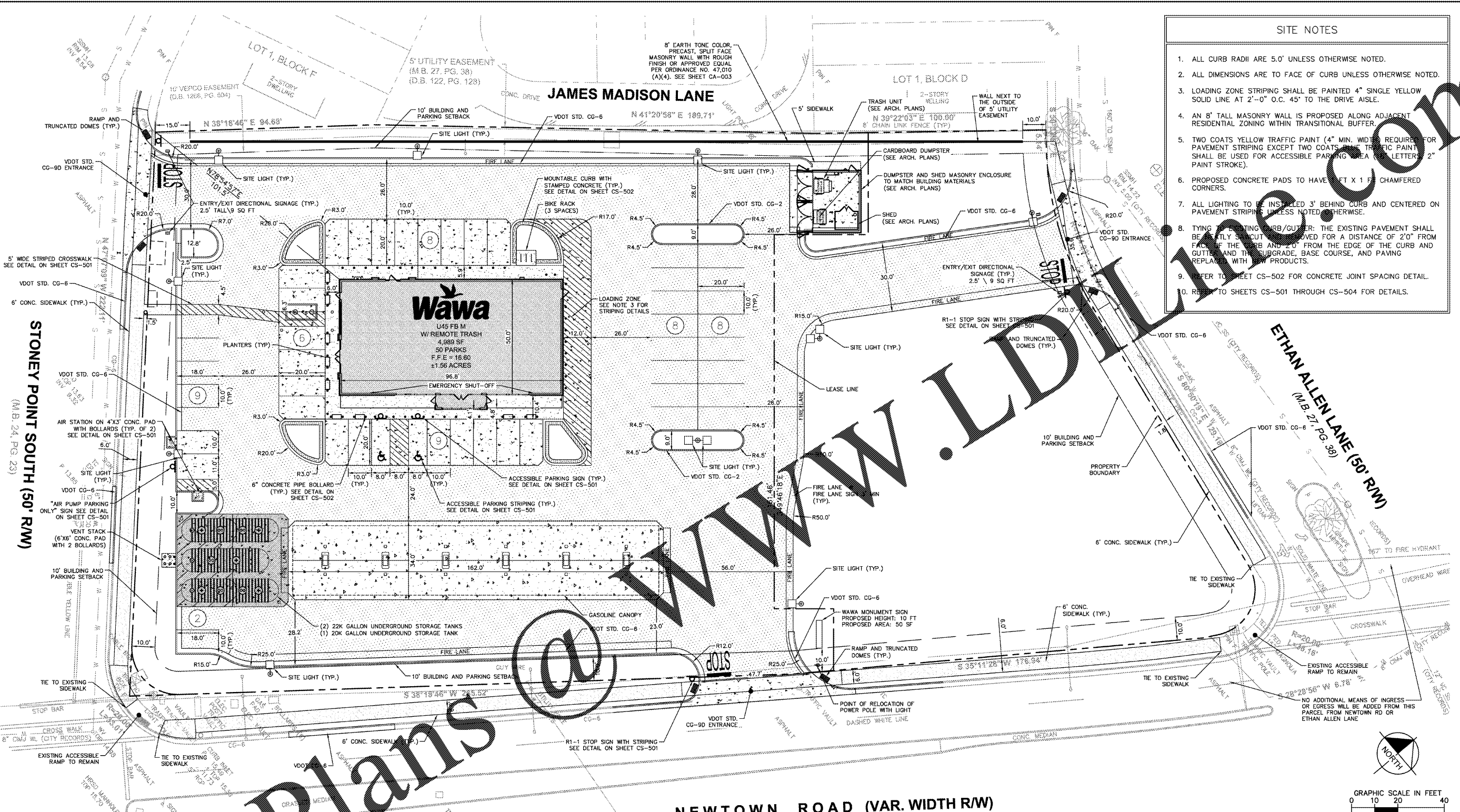


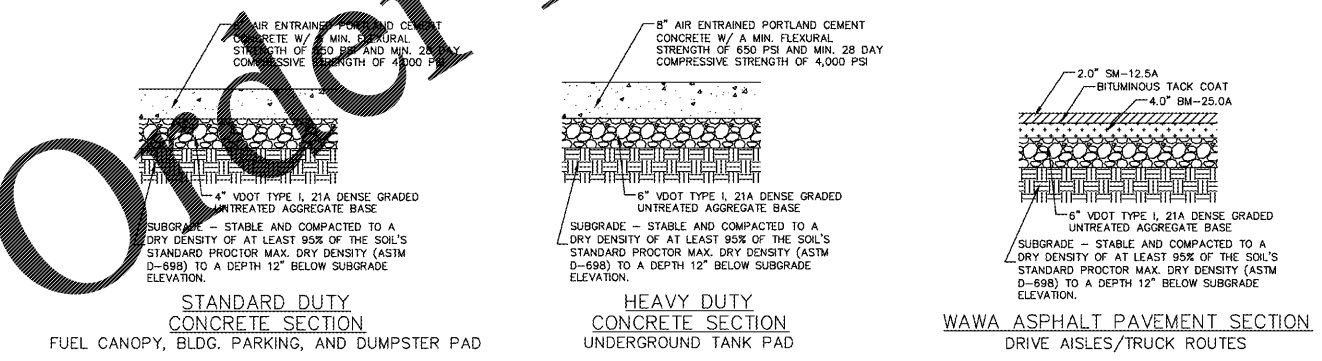
Project: Wawa at Newtown Point and Stoney Point (50' RW) - CS-101 SITE PLAN.dwg  
 Date: 08/24/2018  
 Designer: LEY  
 Checker: LEY  
 Scale: AS SHOWN  
 Project No: 116607003  
 License No: 14990  
 Professional Engineer  
 Kimley-Horn and Associates, Inc.  
 1700 Wellow Lawn Dr., Suite 200, Richmond, VA 23230  
 Phone: 804-673-3882  
 www.kimley-horn.com



- ### SITE NOTES
1. ALL CURB RADII ARE 5.0' UNLESS OTHERWISE NOTED.
  2. ALL DIMENSIONS ARE TO FACE OF CURB UNLESS OTHERWISE NOTED.
  3. LOADING ZONE STRIPING SHALL BE PAINTED 4" SINGLE YELLOW SOLID LINE AT 2'-0" O.C. 45' TO THE DRIVE AISLE.
  4. AN 8' TALL MASONRY WALL IS PROPOSED ALONG ADJACENT RESIDENTIAL ZONING WITHIN TRANSITIONAL BUFFER.
  5. TWO COATS YELLOW TRAFFIC PAINT (4" MIN. WIDTH) REQUIRED FOR PAVEMENT STRIPING EXCEPT TWO COATS YELLOW TRAFFIC PAINT SHALL BE USED FOR ACCESSIBLE PARKING AREA (SEE LETTERS '2' PAINT STROKE).
  6. PROPOSED CONCRETE PADS TO HAVE 1 FT X 1 FT CHAMFERED CORNERS.
  7. ALL LIGHTING TO BE INSTALLED 3' BEHIND CURB AND CENTERED ON PAVEMENT STRIPING UNLESS NOTED OTHERWISE.
  8. TYPING OF LIGHTING CURB/GUTTER: THE EXISTING PAVEMENT SHALL BE CUT AWAY AND REMOVED FOR A DISTANCE OF 2'0" FROM FACE OF THE CURB AND 2'0" FROM THE EDGE OF THE CURB AND GUTTER AND THE SUBGRADE, BASE COURSE, AND PAVING REPLACED WITH NEW PRODUCTS.
  9. REFER TO SHEET CS-502 FOR CONCRETE JOINT SPACING DETAIL.
  10. REFER TO SHEETS CS-501 THROUGH CS-504 FOR DETAILS.

### SITE LEGEND

WAWA ASPHALT PAVEMENT SEE SECTION ON THIS SHEET	
ON SITE CONCRETE SIDEWALK SEE DETAIL CS-501	
STANDARD DUTY CONCRETE SEE SECTION THIS SHEET	
HEAVY DUTY CONCRETE SEE SECTION THIS SHEET	
VDOT CG-6 STANDARD CURB & GUTTER	



DATE: \_\_\_\_\_

REVISIONS: \_\_\_\_\_

NO. \_\_\_\_\_

## Kimley»Horn

© 2018 KIMLEY-HORN AND ASSOCIATES, INC.  
 1700 WELLOW LAWN DR., SUITE 200, RICHMOND, VA 23230  
 PHONE: 804-673-3882  
 WWW.KIMLEY-HORN.COM

**SITE PLAN**

WAWA AT NEWTOWN  
AND STONEY POINT  
PREPARED FOR  
WAWA

CITY OF NORFOLK VIRGINIA

SHEET NUMBER  
**CS-101**