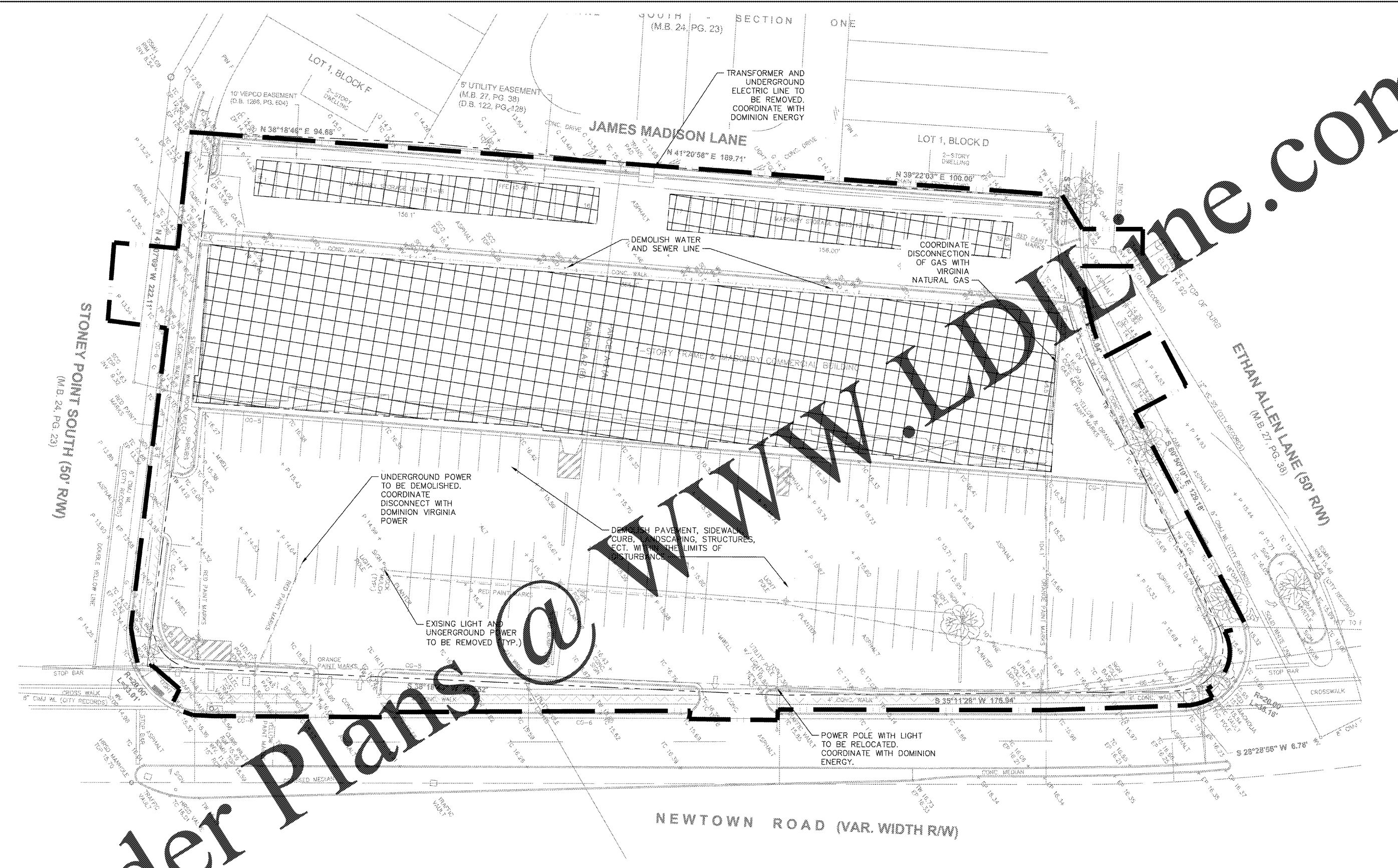
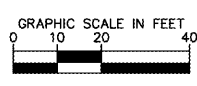


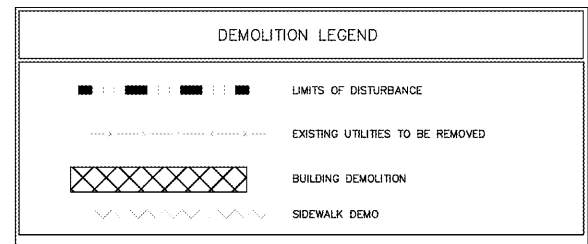
Project: WAWA AT NEWTOWN AND STONEY POINT (50' RW) - DEMOLITION PLAN
 Date: 08/24/2018
 Scale: AS SHOWN
 Designer: LEY
 Drawn: LEY
 Checked: JY
 Project No: 116607003
 Date: 08/24/2018
 Scale: AS SHOWN
 Designer: LEY
 Drawn: LEY
 Checked: JY



Order Plans @ WWW.WAWA.COM



- DEMOLITION NOTES**
1. THIS DEMOLITION/EROSION CONTROL PLAN IS INTENDED TO AID THE CONTRACTOR DURING THE BIDDING AND CONSTRUCTION PROCESS AND IS NOT INTENDED TO DEPICT EACH AND EVERY ELEMENT OF DEMOLITION. THE CONTRACTOR IS RESPONSIBLE FOR IDENTIFYING THE DETAILED SCOPE OF DEMOLITION AND FOR THE DEMOLITION, REMOVAL, OR RELOCATION OF ITEMS IN CONFLICT WITH THE PROPOSED CONSTRUCTION.
 2. CONTRACTOR TO COORDINATE WITH UTILITY COMPANIES REGARDING REMOVAL/DISCONNECTION OF UTILITY LINES TO ENSURE SERVICES TO OTHER PROPERTIES ARE NOT INTERRUPTED.



WAWA AT NEWTOWN AND STONEY POINT (50' RW)

DEMOLITION PLAN

PREPARED FOR
WAWA
CITY OF NORFOLK VIRGINIA

SHEET NUMBER
CD-101

Kimley»Horn

© 2018 KIMLEY-HORN AND ASSOCIATES, INC.
1700 WILLOW LAWN DR., SUITE 200, RICHMOND, VA 23230
PHONE: 804-673-3882
WWW.KIMLEY-HORN.COM

PROFESSIONAL ENGINEER
R. RANDALL ROYAL
Lic. No. 14950
8/24/18

KHA PROJECT: 116607003
DATE: 08/24/2018
SCALE: AS SHOWN
DESIGNED BY: LEY
DRAWN BY: LEY
CHECKED BY: JY

NO. _____
REVISIONS _____
DATE _____