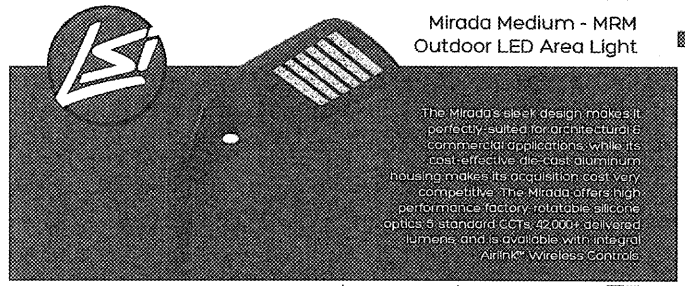


Catalog # : MRM LED 18L SIL FT UNV DIM 50 80CRH BRZ IL
 Project : O'Reilly Auto Parts
 Prepared By : Geyser
 Date : 02/04/2018



**Mirada Medium - MRM
Outdoor LED Area Light**

Features & Specifications

Optical System

- State-of-the-art clear polycarbonate optical lens delivers industry leading optical control with an integrated gasket to provide IP66 sealed socket optical chamber in 1 component.
- Proprietary silicone refractor optic provides exceptional coverage and uniformity in ISO Types 2, 3, 5W, FT and FT4.
- Silicone optical material does not yellow or crack with age and provides a light light transmittance of 93%.

Zero uplight

- Available in 3000K, 4000K, 5000K, and 2700K color temperatures per ANSI C78.377. Also available in Phosphor Converted Amber, custom factory for interiors.
- Minimum CRI of 70. Optional 90 CRI available, consult factory for lead time.
- Integrated Lumen (L) option available for improved back-light control without sacrificing light side performance. See page 8 for more details.

Electrical

- High performance driver features over-voltage, under-voltage, short-circuit and over temperature protection.
- 0-10V dimming (10% - 100%) standard.
- Standard Lineal Voltage (120-277 VAC) Input 50/60 Hz or optional High Voltage (347-480 VAC).
- L80 Calculated Life: >100k Hours (See Lumen Maintenance on Page 3)
- Total harmonic distortion: <20%
- Operating temperature: -40°C to +50°C (-40°F to +122°F). 42L lumen package rated to +60°C.
- Power factor: >.90
- Input power stays constant over life.
- Field replaceable surge protection device meets a minimum Category C level operation (see ANESPEC 022.4.2).
- High efficiency LEDs mounted to metal-core circuit board to maximize heat dissipation.
- Terminal block provided accepts up to 10ga wire.
- Components are fully enclosed in potting material for moisture resistance. Driver complies with FCC standards. Driver and key electronic components can easily be accessed.

Product Dimensions

Side View: 13 1/2" (343mm) height, 1 1/8" (29mm) width, 1 1/2" (38mm) depth, 6 7/8" (173mm) width.

Top View: 18 1/2" (467mm) width, 12 1/2" (318mm) depth.

Bottom View: 18 1/2" (467mm) width, 12 1/2" (318mm) depth.

Other Dimensions: 3 1/2" (89mm) depth, 1 1/2" (38mm) depth, 5 1/8" (138mm) depth.

**Mirada Medium - MRM
Outdoor LED Area Light**

Features & Specifications (Cont.)

Construction

- Rugged die-cast aluminum housing contains factory provided driver and optical unit. Cast aluminum wiring access door located underneath.
- Designed to mount to square or round poles.
- Luminaire is proudly manufactured in the U.S. and imported parts.
- IP66 rated luminaire protects integral components from harsh environments.
- 3G rated for ANSI C136.31 high vibration applications.
- Fixtures are finished with LSI's Duragrip® polyester powder coat finishing process. The Duragrip finish withstands extreme weather changes without cracking or peeling. Other standard LSI finishes available. Consult factory.
- Shipping weight: 30 lbs in cartons.

Controls

Wireless Controls System

To make this fixture AirLink ready, simply order one of the following options:

- The Integrated Wireless Lighting Controller (ALSC or ALSCH) (see ordering guide) as the controls option, or
- Integrated Wireless Controller (optional) with integrated motion sensor. ALSCS (ordering guide for mounting heights) or
- The 7-Pin Photoelectric Control Receiver (CRFP) as the controls option, and either the 2-2Pin or 2-2Pin Lock Control. ALSC UNV TLS is ALSC UNV TLT as an accessory.

Stand Alone Controls

To see how the components of LSI's AirLink system work together, reference the diagram in the controls section of this spec sheet. For more information on our AirLink products, visit our website: www.lsi-light.com.

Key Features:

- The 7-pin ANSI C136.31-2013 photocontrol receptacle option (CRFP) is available for best back photocontrols or wireless control modules.
- The Budon Type Photoelectric (PCE) is capable of providing luminaires ON/OFF in response to the amount of available daylight.

Installation

- A single fastener secures the hinged door, underneath the housing and provides quick & easy access to the electrical compartment for installing wiring.
- Included terminal block provides quick and easy on-site wiring.
- Utilizes LSI's traditional 3/8" drill pattern for easy fastening of LSI products. (See drawing on page 1)

Warranty

- LSI LED fixtures carry a 5-year warranty.

Listings

- UL Listed to UL 1595 and UL 9750.
- FDA Compliant.
- American Recovery and Reinvestment Act Funding Compliant.
- IEA compliant; with 3000K color temperature selection.
- Tier 2 Compliant; see local ordinance for qualification information.
- Available for wet locations.
- IP66 rated luminaire. IP66 rated optical chamber.
- 3G rated for ANSI C136.31 high vibration applications.

Performance

ELECTRICAL DATA (AMPS)*

LED Power	30W	120W	200W	240W	312W	340W	400W
IL	1.5	5.0	8.3	10.4	13.6	15.1	18.2

ELECTRICAL DATA - PHOTOPHOTON CONVERTED AMPS (AMPS)*

LED Power	30W	120W	200W	240W	312W	340W	400W
IL	1.5	5.0	8.3	10.4	13.6	15.1	18.2

RECOMMENDED LUMEN MAINTENANCE (24-42L)

Area	30W	120W	200W	240W	312W	340W	400W
Ambsft	28.6	78.7	130.5	158.4	204.6	225.1	268.4
0.50 C	100%	100%	92%	92%	86%	86%	86%

RECOMMENDED LUMEN MAINTENANCE (7-34L)

Area	30W	120W	200W	240W	312W	340W	400W
Ambsft	28.6	78.7	130.5	158.4	204.6	225.1	268.4
0.50 C	100%	100%	92%	92%	86%	86%	86%

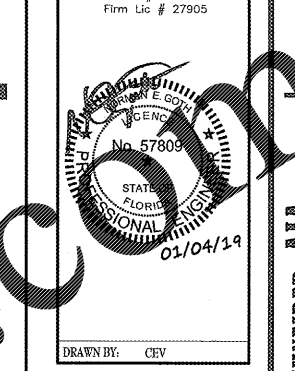
DELIVERED LUMENS*

Area	30W	120W	200W	240W	312W	340W	400W
Ambsft	28.6	78.7	130.5	158.4	204.6	225.1	268.4

**Mirada Medium - MRM
Outdoor LED Area Light**

DELIVERED LUMENS*

Area	30W	120W	200W	240W	312W	340W	400W
Ambsft	28.6	78.7	130.5	158.4	204.6	225.1	268.4



**CRAIG A. SCHNEIDER, AIA
ARCHITECT**
 1736 East Sunshine, Suite 417
 Springfield, Missouri 65804
 Tel: 417.862.0558
 Fax: 417.862.3265
 e-mail: carchitect@estimating.com

MIRADA WALL SCONE (XWM)

SMARTTEC™ 4-Si delivers feature integral sensor which reduces drive current, when ambient temperatures exceed rated temperature.

ENERGY SAVING CONTROL OPTIONS - DIM - 0-10 volt dimming enabled with LSI wireless controls.

OPTIONAL INTEGRAL MOTION SENSOR - Passive infrared motion sensor activates switching of luminaire light levels. High level light is activated when passively enter target zone and increased to full height in 1/2 seconds. Low light level (50% of maximum drive current) is activated when target zone is absent of motion activity for 5 minutes and is gradually ramped down (10 seconds) to low level. Sensor detection range 110° horizontal x 65° vertical x 10 meters maximum distance.

LED'S - Available with 3000K, 4000K or 5000K color temperature. 70 CRI.

OPTICS/DISTRIBUTION - Ultra-high efficiency reflectors provide the distributions. Choose from Type 2, Type 3 or Type FT.

HOUSING - Three-piece die-cast aluminum housing is smooth, combined low-voltage mounting hardware is stainless steel or electro-zinc plating. Housing is certified for use with standard aluminum and steel poles.

OPTICAL UNIT - Proprietary silicone refractor optic provides exceptional coverage and uniformity. Pressure stabilizing bracket allows superior protection from processing cycling from building up internal pressures and vacuum seal can be stretched to fit.

WALL MOUNTING - Galvanized-steel universal wall mounting plate easily fits into standard 4" octagonal or square junction box. EPDM gasket is standard to be replaced when mounting plate and junction box, enabling junction box from re-use of mounting plate permits future to be used in uplighting (indoor only) for ambulatory condition. Optional pole-mounting bracket permits mounting to standard poles (XPLM).

ELECTRICAL - Two-stage surge protection (including separate surge protection on electronic driver) meets ANSI/UL 1595, UL9750 and other U.S. and International safety standards. Suitable for wet locations in downlight position. Please consult factory for special requirements.

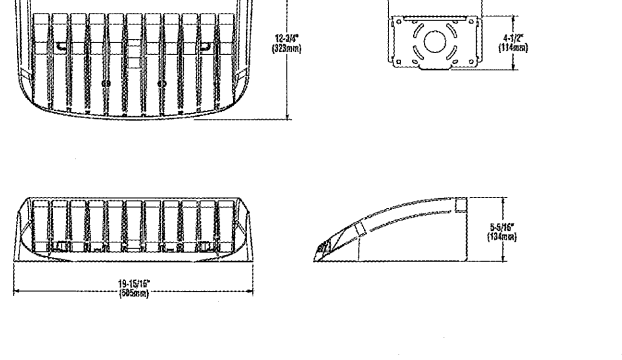
MIRADA WALL SCONE (XWM)

ACCESSORY ORDERING INFORMATION*

Accessory	Description	Order Number
W-101	30W-4000K	18342
W-102	120W-4000K	18343
W-103	200W-4000K	18344
W-104	240W-4000K	18345
W-105	312W-4000K	18346
W-106	340W-4000K	18347
W-107	400W-4000K	18348

FORNOTES:

- For color rendering information and accessories, see Controls Section.
- For details on the LED, DALI, DALI, DALI or DALI 2, see the LSI website.
- For details on the LED, DALI, DALI, DALI or DALI 2, see the LSI website.
- For details on the LED, DALI, DALI, DALI or DALI 2, see the LSI website.



**Mirada Medium - MRM
Outdoor LED Area Light**

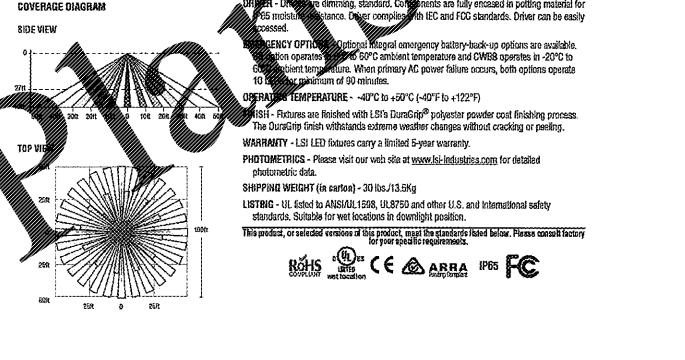
Performance (Cont.)

All published luminaire photometric testing performed to IESNA LM-79 standards. ISO footcandle plots below demonstrate the Mirada (MIRA) light patterns only. Not for total fixture output. For complete specifications and IES files, see website.

Ordering Guide

TYPICAL ORDER SAMPLE: **MRM LED 36L SIL FTA UNV DIM 50 70CRI ALSCS04 BRZ IL**

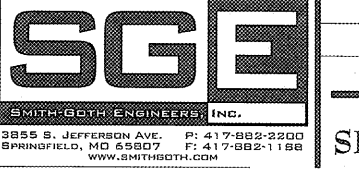
Area	30W	120W	200W	240W	312W	340W	400W
Ambsft	28.6	78.7	130.5	158.4	204.6	225.1	268.4



Project Name: _____ Fixture Type: _____ 10/20/17
 Catalog # _____ LSI INDUSTRIES INC.

Project Name: _____ Fixture Type: _____ 10/20/17
 Catalog # _____ LSI INDUSTRIES INC.

Order Plans



PROJECT: **NEW O'REILLY AUTO PARTS STORE**
 1345 15TH STREET
 PANAMA CITY, FL #1
SITE LIGHTING DETAILS

COMM # 4275
 DATE: 01-04-19
 REVISION DATE: