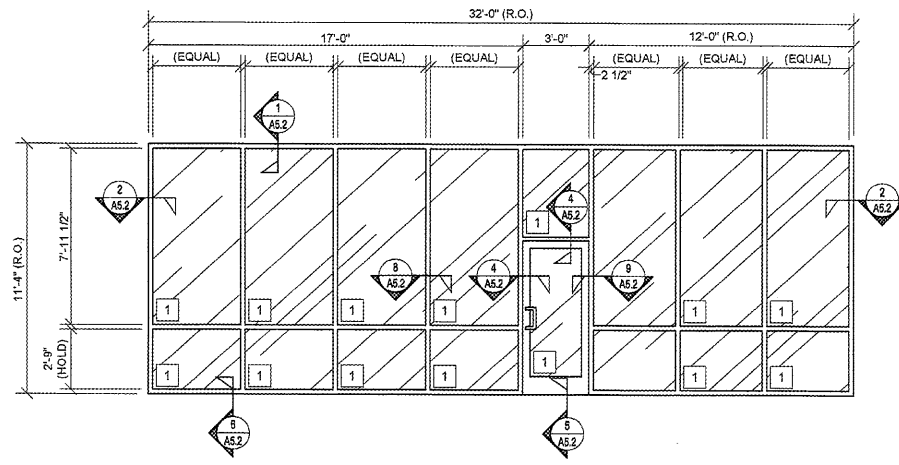
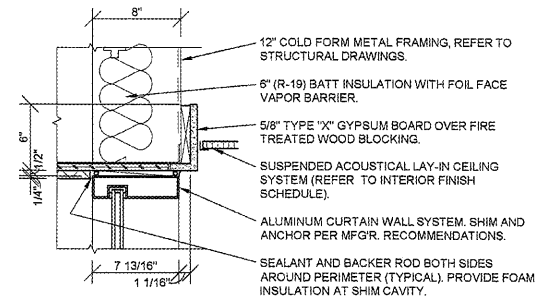


WINDOW TYPES



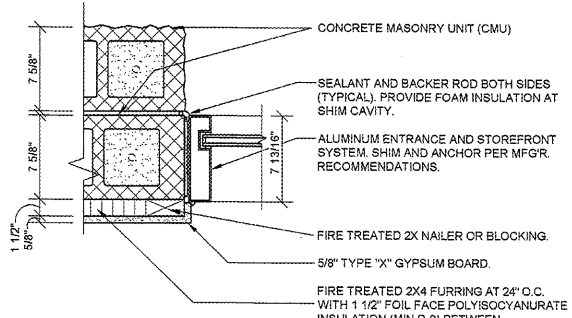
A ALUMINUM CURTAIN WALL FRAMING (2 1/2" X 7 13/16") SYSTEM, THERMALLY BROKEN, FIXED UNIT.

NOTE: REFER TO WALL SECTIONS FOR TYPICAL EXTERIOR WALL CONSTRUCTION NOTATION.



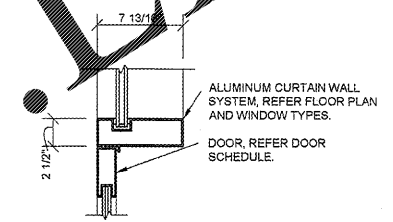
1 HEAD DETAIL
A5.2 SCALE: 1 1/2" = 1'-0"

NOTE: REFER TO WALL SECTIONS FOR TYPICAL EXTERIOR WALL CONSTRUCTION NOTATION.

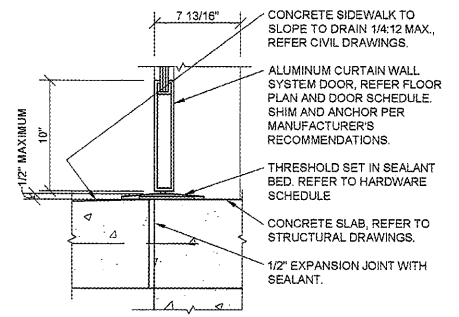


2 JAMB DETAIL
A5.2 SCALE: 1 1/2" = 1'-0"

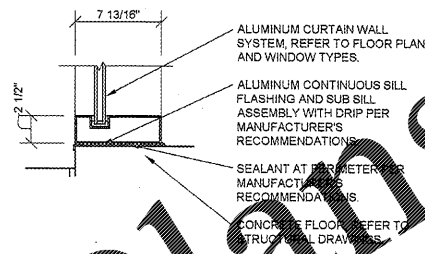
3 NOT USED
A5.2 SCALE: 1 1/2" = 1'-0"



4 HEAD / JAMB DETAIL
A5.2 SCALE: 1 1/2" = 1'-0"



5 SILL DETAIL
A5.2 SCALE: 1 1/2" = 1'-0"



6 SILL DETAIL
A5.2 SCALE: 1 1/2" = 1'-0"

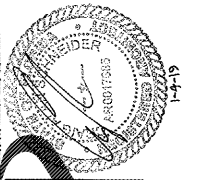
GENERAL NOTES

- (A) REFER TO PROJECT MANUAL FOR ADDITIONAL REQUIREMENTS.
- (B) REFER TO BUILDING CODE SUMMARY FOR PROJECT STRUCTURAL DESIGN CRITERIA. WINDOW FRAMING AND ANCHORING SYSTEMS SHALL BE DESIGNED BY MANUFACTURER TO CONFORM TO PERFORMANCE AND TESTING REQUIREMENTS SPECIFIED.
- (C) REFER TO FLOOR PLAN, ELEVATIONS, AND SECTIONS FOR ADDITIONAL REQUIREMENTS.
- (D) WINDOW TYPE ELEVATIONS SHOWN VIEWED FROM EXTERIOR SIDE.
- (E) REFER TO EXTERIOR FINISH SCHEDULES FOR ALUMINUM WINDOW FRAMING COLORS. PERIMETER SEALANT COLOR TO MATCH WINDOW FRAMING COLOR UNLESS OTHERWISE INDICATED.
- (F) ALL DIMENSIONS TO ROUGH FACE OF FRAMING UNLESS OTHERWISE INDICATED. FIELD VENTILATORS TO BE INSTALLED PRIOR TO WINDOW INSTALLATION.
- (G) REFER TO DOOR AND HARDWARE SCHEDULES FOR ADDITIONAL REQUIREMENTS.
- (H) SECURITY SYSTEMS MAY BE REQUIRED. CONTACT PROJECT ADMINISTRATOR FOR VERIFICATION. (REFER TO SCOPE OF WORK SCHEDULE). PROVIDE ADDITIONAL SUPPORT FRAMING SYSTEM AS REQUIRED.
- (I) WHEN WIND SPEED IS EQUAL TO OR GREATER THAN 120 MPH, A FORM PANEL SYSTEM SHALL BE OWNER FURNISHED AND INSTALLED. CONTACT PROJECT ADMINISTRATOR TO VERIFY AND COORDINATE WITH SYSTEM PROVIDED BY OTHERS. (REFER TO SCOPE OF WORK SCHEDULE). PROVIDE ADDITIONAL SUPPORT FRAMING SYSTEM AS REQUIRED.
- (J) CONTRACTOR'S OPTION TO DIRECT ORDER AND PURCHASE WINDOW FRAMING SYSTEM AND GLAZING FROM THE FOLLOWING SUPPLIER (REFER TO SCOPE OF WORK SCHEDULE):

COULTER & COMPANY
13711 E. 86TH ST. N.
OWASSO, OK 74055
PHONE: (918) 272-4494
FAX: (918) 272-7908
EMAIL: carl@coulterglass.com
CONTACT: Carl Yorman

GLAZING SCHEDULE

- 1 1 5/16" INSULATED IMPACT RESISTANT SAFETY GLAZING (7/16" VITRO "SOLEXIA" TEMPERED EXTERIOR PANE WITH REINFORCING INNER LAYER / 7/16" CLEAR TEMPERED INTERIOR PANE) SHADING COEFFICIENT .57



CRAIG A. SCHNEIDER, AIA
ARCHITECT
417.862.000
1756 East Sunshine, Suite 417
Springfield, Missouri 65804
e-mail: architect@estetichneider.com

PROJECT:
NEW O'REILLY AUTO PARTS STORE
1345 15TH STREET
PANAMA CITY, FL #1
WINDOW SCHEDULE

O'Reilly AUTO PARTS
CORPORATE OFFICES
233 SOUTH PATTERSON
SPRINGFIELD, MISSOURI 65802
(417) 862-2674 TELEPHONE

COMM #	4275
DATE:	1-4-19
REVISION	
DATE:	