

EXTERIOR FINISH SCHEDULE

EXTERIOR INSULATION AND FINISH SYSTEM (EIFS)

KEY NOTE NO. 1:
MFG: DRYVIT SPECIFIED, EQUAL BY STO OR BASF (NO SUBSTITUTES)
SERIES: OUTSULATION PLUS MD
TEXTURE: SANDBLAST
COLOR: DRYVIT "ORP010305" STRATOTONE HIGH PERFORMANCE
COLOR STANDARD: SHERWIN WILLIAMS "POSITIVE RED" SW6871 (SHER-CRYL) GLOSS

KEY NOTE NO. 5:
MFG: DRYVIT SPECIFIED, EQUAL BY STO OR BASF (NO SUBSTITUTES)
SERIES: OUTSULATION PLUS MD
TEXTURE: SANDBLAST
COLOR: EQUAL TO SHERWIN WILLIAMS "SOFTER TAN" SW5141 (SHER-CRYL) GLOSS

UNIT MASONRY

KEY NOTE NO. 2A:
TYPE: CONCRETE MASONRY UNIT (CMU)
MFG: (REFER TO PROJECT MANUAL)
SIZE: 8"X8"X16" (NOM.)
TEXTURE: SMOOTH FACE SINGLE SCORE
COURSING: RUNNING BOND
FINISH: FIELD PAINT (ACCENT COLOR)
COLOR: SHERWIN WILLIAMS "SOFTER TAN" SW5141 (SEMI-GLOSS)

KEY NOTE NO. 2B:
TYPE: CONCRETE MASONRY UNIT (CMU)
MFG: (REFER TO PROJECT MANUAL)
SIZE: 8"X8"X16" (NOM.)
TEXTURE: SPLIT FACE
COURSING: RUNNING BOND
FINISH: FIELD PAINT (FIELD COLOR)
COLOR: SHERWIN WILLIAMS "LATTE" SW6108 (SEMI-GLOSS)

KEY NOTE NO. 12:
TYPE: STEEL DOORS AND FRAMES (DOORS NO. 3)
MFG: (REFER PROJECT MANUAL)
FINISH: FACTORY PRIMED AND FIELD PAINTED
COLOR: SHERWIN WILLIAMS (MATCH ADJACENT MASONRY COLOR) (SEMI-GLOSS)

KEY NOTE NO. 13:
TYPE: STEEL WINDOWS (REFER TO WINDOW SCHEDULE)
MFG: EPFC, KAWNEER, OR OLD CASTLE (WINDOW WALL), (NO SUBSTITUTES)
COLOR: EPFC "VY", KAWNEER "DARK IVY", WINDOW WALL "INTERSTATE GREEN"

KEY NOTE NO. 14:
TYPE: STEEL COLLARS (REFER TO CIVIL DRAWINGS)
FINISH: FIELD PRIME AND PAINT
COLOR: SHERWIN WILLIAMS "HUNT CLUB" SW6468 (SEMI-GLOSS)

KEY NOTE NO. 15:
TYPE: STEEL COLLARS (REFER TO CIVIL DRAWINGS)
FINISH: FIELD PRIME AND PAINT
COLOR: SHERWIN WILLIAMS "HUNT CLUB" SW6468 (SEMI-GLOSS)

FLASHING AND SHEET METAL

KEY NOTE NO. 3:
TYPE: STANDING SEAM ROOFING SYSTEM
MFG: (REFER TO PRE-ENGINEERED METAL BUILDING SHOP DRAWINGS)
COLOR: EQUAL TO "SOLAR WHITE" WITH SOLAR REFLECTANCE OF 0.70 AND THERMAL EMITANCE OF 0.85

KEY NOTE NO. 4:
TYPE: CAP FLASHING
MFG: (REFER TO PRE-ENGINEERED METAL BUILDING SHOP DRAWINGS)
FINISH: PREFINISHED
COLOR: EQUAL TO BUTLER BUILDING "COOL BIRCH WHITE"

KEY NOTE NO. 18:
TYPE: CONDUCTOR HEAD AND DOWNSPOUTS
FINISH: PREFINISHED
COLOR: EQUAL TO BUTLER BUILDING "COOL BIRCH WHITE"

DOORS AND WINDOWS

KEY NOTE NO. 12:
TYPE: STEEL DOORS AND FRAMES (DOORS NO. 2 AND 7)
MFG: (OWNER FURNISHED / CONTRACTOR INSTALLED)
FINISH: FACTORY PRIMED AND FIELD PAINTED
COLOR: SHERWIN WILLIAMS (MATCH ADJACENT MASONRY COLOR) (SEMI-GLOSS)

KEY NOTE NO. 12:
TYPE: STEEL DOORS AND FRAMES (DOORS NO. 3)
MFG: (REFER PROJECT MANUAL)
FINISH: FACTORY PRIMED AND FIELD PAINTED
COLOR: SHERWIN WILLIAMS (MATCH ADJACENT MASONRY COLOR) (SEMI-GLOSS)

KEY NOTE NO. 13:
TYPE: STEEL WINDOWS (REFER TO WINDOW SCHEDULE)
MFG: EPFC, KAWNEER, OR OLD CASTLE (WINDOW WALL), (NO SUBSTITUTES)
COLOR: EPFC "VY", KAWNEER "DARK IVY", WINDOW WALL "INTERSTATE GREEN"

KEY NOTE NO. 14:
TYPE: STEEL COLLARS (REFER TO CIVIL DRAWINGS)
FINISH: FIELD PRIME AND PAINT
COLOR: SHERWIN WILLIAMS "HUNT CLUB" SW6468 (SEMI-GLOSS)

KEY NOTE NO. 15:
TYPE: STEEL COLLARS (REFER TO CIVIL DRAWINGS)
FINISH: FIELD PRIME AND PAINT
COLOR: SHERWIN WILLIAMS "HUNT CLUB" SW6468 (SEMI-GLOSS)

GENERAL NOTES

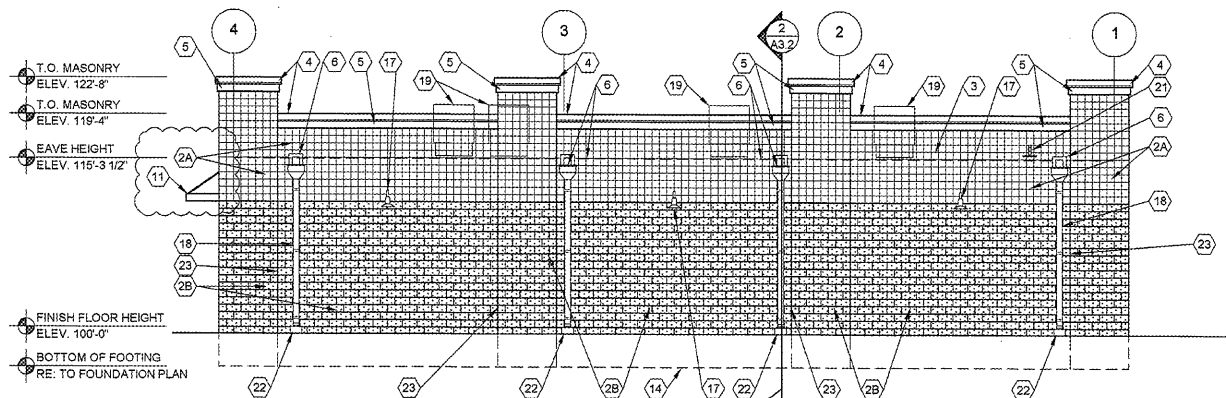
- (A) REFER TO PROJECT MANUAL FOR ADDITIONAL REQUIREMENTS.
- (B) REFER TO CIVIL DRAWINGS FOR ADDITIONAL REQUIREMENTS.
- (C) REFER TO PLUMBING, MECHANICAL, AND ELECTRICAL DRAWINGS FOR SYSTEM TYPES AND ADDITIONAL REQUIREMENTS.
- (D) REFER TO EXTERIOR FINISH SCHEDULE FOR MATERIAL TYPES.
- (E) REFER TO PRE-ENGINEERED METAL BUILDING SHOP DRAWINGS FOR ADDITIONAL REQUIREMENTS.
- (F) REFER TO SCOPE OF WORK SCHEDULE FOR ADDITIONAL REQUIREMENTS.

KEY NOTES

- (1) EXTERIOR INSULATION AND FINISH SYSTEM (EIFS).
- (2A) CONCRETE MASONRY UNIT (CMU) EXTERIOR WALL CONSTRUCTION (ACCENT COLOR) REFER TO PLANS, SECTIONS, AND DETAILS FOR ADDITIONAL REQUIREMENTS.
- (2B) CONCRETE MASONRY UNIT (CMU) EXTERIOR WALL CONSTRUCTION (FIELD COLOR), REFER TO PLANS, SECTIONS, AND DETAILS FOR ADDITIONAL REQUIREMENTS.
- (3) PRE-ENGINEERED METAL BUILDING SHEET METAL ROOFING SYSTEM, (BEYOND)
- (4) PRE-ENGINEERED METAL BUILDING SHEET METAL FLASHING, FIELD BREAK FROM PRE-FINISHED FLAT STOCK AS REQUIRED.
- (5) EXTERIOR INSULATION AND FINISH SYSTEM (EIFS) CORNICE.
- (6) PRE-ENGINEERED METAL BUILDING SHEET METAL GUTTER (BEYOND) AND SCUPPER BY PEMB MANUFACTURER.
- (7) CONCRETE MASONRY UNIT (CMU) CORNER FINISHED JAMB UNIT.
- (8) LINE OF ROOF BEYOND WITH 1/4":12" SLOPE MINIMUM.
- (9) SURFACE MOUNTED SIGN OWNER FURNISHED AND INSTALLED. PROVIDE BACKING FOR MOUNTING AND ROUGH-IN ELECTRICAL COORDINATE REQUIREMENTS WITH OWNER. REFER TO SHEET SG2.1.
- (10) BUILDING ADDRESS NUMBERS IN 6" HIGH HELVETICA WHITE VINYL ADHERED TO EXTERIOR FACE OF GLAZING.
- (11) PRE FABRICATED METAL CANOPY EQUAL TO ARCHITECTURAL SHADE PRODUCTS (LARRY FISHER - 770-213-2131) 6" FASCIA, 3'-0" PROJECTION, FLAT METAL CANOPY WITH HANGER RODS (1 1/4" SCHEDULE 40 PIPE), (COLOR TO BE GREEN TO MATCH CANOPY COLOR) (COORDINATE EXACT LOCATION OF ROD BRACING WITH APPROVED SIGNAGE PLANS SUBMITTED BY OTHERS, TO AVOID CONFLICT WITH SIGN LOCATION). METAL DECKING - .085 EXTRUDED ALUMINUM IN 6" WIDE PANELS; MIL FINISH ALUMINUM TOP. EXPOSED BOTTOM SHALL BE POWDER COATED, FINISH TO BE GREEN TO MATCH STOREFRONT. PROVIDE TWO 3" DIAMETER ROUND DOWNSPOUTS TO EXTEND 3" BELOW CANOPY AT LOCATION SHOWN - GREEN TO MATCH STOREFRONT. PROVIDE 3RD PARTY ENGINEERED PLANS SEALED FOR THE STATE OF FLORIDA. REFER TO WALL SECTIONS AND STRUCTURAL.
- (12) EXTERIOR DOOR AND FRAME SYSTEM REFER TO FLOOR PLAN AND DOOR SCHEDULE FOR TYPES.
- (13) EXTERIOR WINDOW SYSTEM. REFER TO FLOOR PLAN AND WINDOW SCHEDULE FOR TYPES.
- (14) APPROXIMATE LINE OF FOUNDATION, REFER TO STRUCTURAL DRAWINGS.
- (15) STEEL BOLLARDS, REFER TO CIVIL AND STRUCTURAL DRAWINGS.
- (16) HOSE BIB, REFER TO PLUMBING DRAWINGS.
- (17) LIGHT FIXTURE, REFER TO ELECTRICAL DRAWINGS.
- (18) CONDUCTOR HEAD AND DOWNSPOUT (BY CONTRACTOR) REFER TO A3.3.
- (19) MECHANICAL ROOF TOP UNIT, REFER TO MECHANICAL DRAWINGS.
- (20) MECHANICAL WALL PENETRATIONS, REFER TO MECHANICAL DRAWINGS. PROVIDE FRAMING, FLASHING, AND SEALANT AS REQUIRED. INSTALL RESTROOM EXHAUST FANS 12" MINIMUM ABOVE INTERIOR CEILING FRAMING.
- (21) PLUMBING ROOF VENT, REFER TO PLUMBING DRAWINGS AND DETAIL 11/A4.2.
- (22) DOWNSPOUT COLLECTION SYSTEM. REFER TO CIVIL.
- (23) MASONRY CONTROL JOINT, REFER TO STRUCTURAL DRAWINGS. PROVIDE SEALANT OVER 1/2" DIAMETER FOAM BACKER ROD.
- (24) RUSTICATION JOINT, REFER TO DETAIL 6/A3.2.

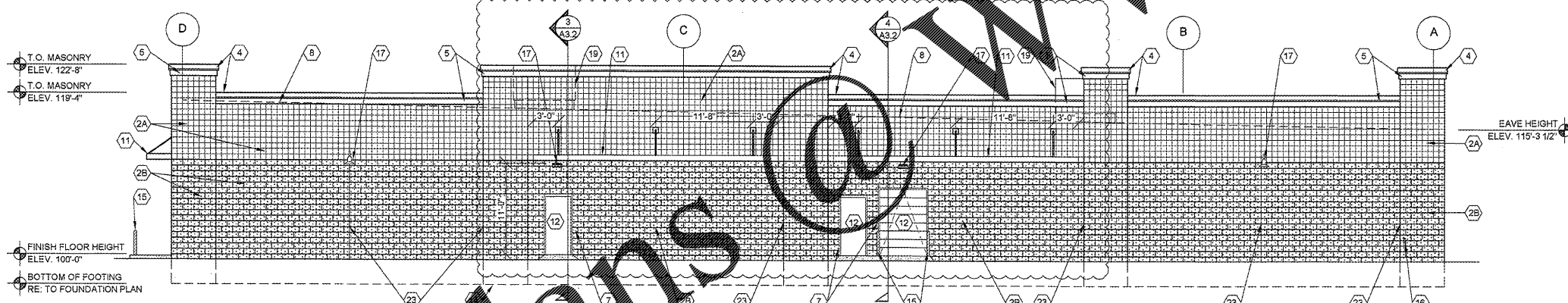
1 NORTH EXTERIOR ELEVATION

A2.1 SCALE: 1/8" = 1'-0"



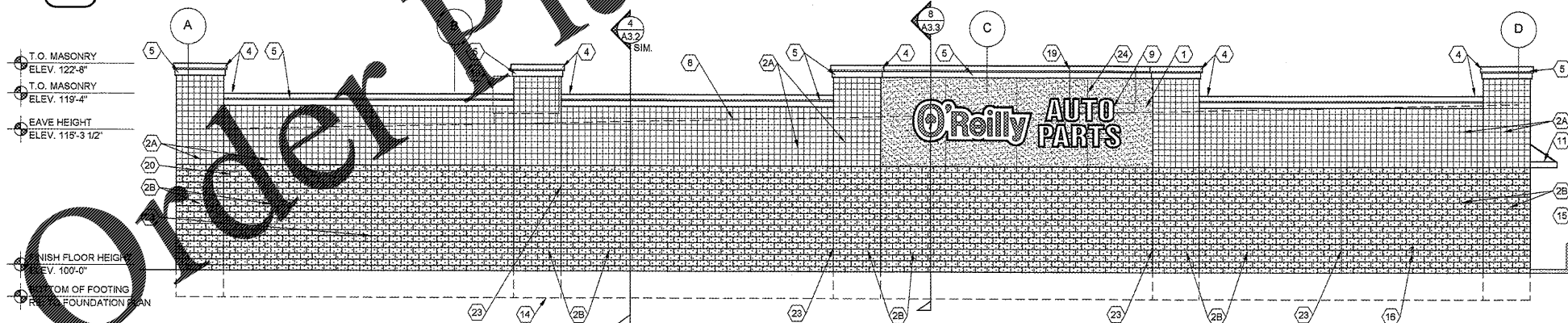
2 SOUTH EXTERIOR ELEVATION

A2.1 SCALE: 1/8" = 1'-0"



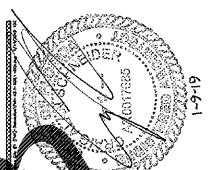
3 WEST EXTERIOR ELEVATION

A2.1 SCALE: 1/8" = 1'-0"



4 EAST EXTERIOR ELEVATION

A2.1 SCALE: 1/8" = 1'-0"



CRAG A. SCHNEIDER, AIA
ARCHITECT

1756 East Sunshine, Suite 417
 Springfield, Missouri 65804

PROJECT:
NEW O'REILLY AUTO PARTS STORE
1345 15TH STREET
PANAMA CITY, FL #1

EXTERIOR ELEVATIONS

O'Reilly AUTO PARTS
 CORPORATE OFFICES
 233 SOUTH PATTERSON
 SPRINGFIELD, MISSOURI 65802
 (417) 862-2674 TELEPHONE

COMM # 4275
 DATE: 1-4-19
 REVISION DATE: 1-9-19

A2.1