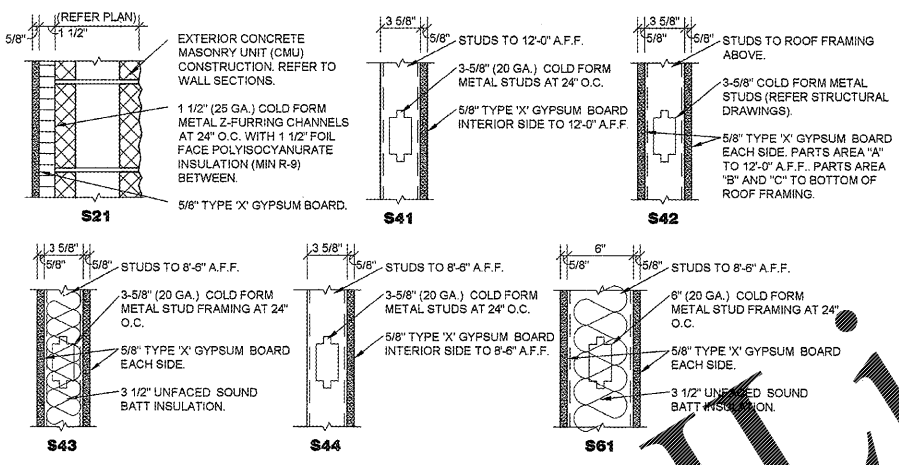


**1 FLOOR PLAN**  
A1.1 SCALE: 1/8" = 1'-0"

**INTERIOR WALL TYPES**  
(SCALE 1 1/2" = 1'-0")



**GENERAL NOTES**

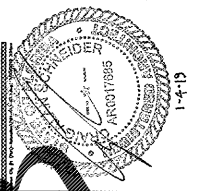
- (A) REFER TO PROJECT MANUAL FOR ADDITIONAL REQUIREMENTS.
- (B) ALL DIMENSIONS TO ROUGH FACE OF ROUGH FRAMING, CONCRETE MASONRY OR CENTERLINE OF STRUCTURE, UNLESS OTHERWISE NOTED. COLD FORM METAL STUD INTERIOR PARTITION DIMENSIONS SHALL BE 3/8" UNLESS OTHERWISE INDICATED AND NOT SHOWN FOR CLARITY.
- (C) REFER TO EXTERIOR AND INTERIOR FINISH SCHEDULES FOR ADDITIONAL REQUIREMENTS.
- (D) REFER TO PRE-ENGINEERED METAL BUILDING SHOP DRAWINGS FOR ADDITIONAL REQUIREMENTS. ARCHITECT'S FINISH DESIGN CONDITIONS DEVIATE SUBSTANTIALLY FROM THOSE INDICATED HEREIN.

**KEY NOTES**

- (1) EXPOSED STEEL COLUMN, REFER TO PRE-ENGINEERED METAL BUILDING SHOP DRAWINGS. PROVIDE SHEET METAL COVER WITH NO EXPOSED HORIZONTAL SEAMS. FINISH TO MATCH WINDOW FRAME.
- (2) EXPOSED STEEL COLUMN, REFER TO PRE-ENGINEERED METAL BUILDING SHOP DRAWINGS. (PAINT W-3, REFER TO INTERIOR FINISH SCHEDULE).
- (3) (NOT USED)
- (4) SURFACE MOUNTED PORTABLE FIRE EXTINGUISHER, REFER TO DETAIL 10/A4.2.
- (5) SHOWROOM CORNER WALL BOX OUT. INSTALL 5/8" FIRE TREATED PLYWOOD BACKING TO BACK SIDE OF STUD INTERIOR FLANGE ON EACH EXPOSED WALL FACE FROM 8'-0" TO 10'-0" A.F.F. FOR INSTALLATION OF SECURITY MIRRORS. REFER TO A4A.2 (TYPICAL).
- (6) TACTILE EXIT SIGN AT EXIT DISCHARGE DOOR STATING "EXIT" WITH BRAILLE LETTERING. SIGN TYPE TO COMPLY WITH ANSI A117.1 AND MOUNTED AT 6'-0" A.F.F. TO CENTERLINE.
- (7) ROOF HATCH & ROOF ACCESS LADDER. REFER TO 8/A4.2.

**INTERIOR WALL & CEILING NOTES**

- 1. GENERAL:
  - A. REFER TO FINISH SCHEDULES FOR ADDITIONAL WALL FINISH MATERIAL APPLICATIONS.
  - B. REFER TO WALL SECTIONS AND DETAILS FOR ADDITIONAL CONDITIONS.
- 2. FRAMING:
  - A. PROVIDE FIRE TREATED 2X BLOCKING AS REQUIRED FOR INSTALLATION OF ACCESSORIES PER MANUFACTURER'S RECOMMENDATIONS.
  - B. PROVIDE DIAGONAL WALL BRACING (3" X 16 GA. FLAT STRIP) AT CORNER FACES OF FREE STANDING PARTITION SYSTEMS.
  - C. WHERE WALL FRAMING EXTENDS TO BOTTOM OF ROOF DECK OR STRUCTURE, PROVIDE DEFLECTION CHANNELS AT TOP TRACK FOR 1 1/2" MINIMUM DEFLECTION.
  - D. REFER TO STRUCTURAL DRAWINGS FOR STRUCTURAL STUD REQUIREMENTS.
  - E. REFER TO WINDOW AND DOOR HEAD, JAMB AND SILL DETAILS FOR ADDITIONAL FRAMING REQUIREMENTS.
  - F. PROVIDE HORIZONTAL STUD BRIDGING AT 4'-0" O.C. VERTICAL.
- 3. GYPSUM AND BACKING BOARD:
  - A. EXPANSION/CONTROL JOINTS: INSTALL EXPANSION/CONTROL JOINTS IN CEILINGS EXCEEDING 2500 SQ. FT. IN AREA AND IN PARTITION WALL LENGTHS EXCEEDING 30 FEET. DO NOT EXCEED A DISTANCE OF 50 FEET IN ANY DIRECTION BETWEEN CEILING JOINTS. INSTALL CONTROL JOINTS WHERE FRAMING OR FURRING CHANGES DIRECTION.
- B. PROVIDE MOISTURE RESISTANT TYPE "X" GYPSUM BOARD AT ALL WET LOCATIONS (RESTROOMS, WET WALLS, AND JANITOR'S SINK AREAS).
- C. PROVIDE "J" MOLDING, REGLETS, OR CORNER BEAD AT GYPSUM BOARD PERIMETER CONDITIONS TRANSITIONING TO DISSIMILAR EXPOSED FINISH MATERIALS.
- 4. INSULATION:
  - A. INSULATION SHALL HAVE A FLAME SPREAD RATING OF 0-25 AND A SMOKE DEVELOPMENT RATING OF 0-450.
  - B. PROVIDE SEALANT ON BOTH SIDES OF STUD BOTTOM TRACKS AT ACOUSTICALLY INSULATED WALL LOCATIONS.



**CRAG A. SCHNEIDER, AIA**  
ARCHITECT  
417.862.0100  
417.862.3206  
e-mail: architect@esteytschneider.com

PROJECT:  
**NEW O'REILLY AUTO PARTS STORE**  
1345 15TH STREET  
PANAMA CITY, FL #1  
**FLOOR PLAN**

**O'Reilly AUTO PARTS**  
CORPORATE OFFICES  
233 SOUTH PATTERSON  
SPRINGFIELD, MISSOURI 65802  
(417) 862-2674 TELEPHONE

COMM #	4275
DATE:	1-4-19
REVISION	
DATE:	