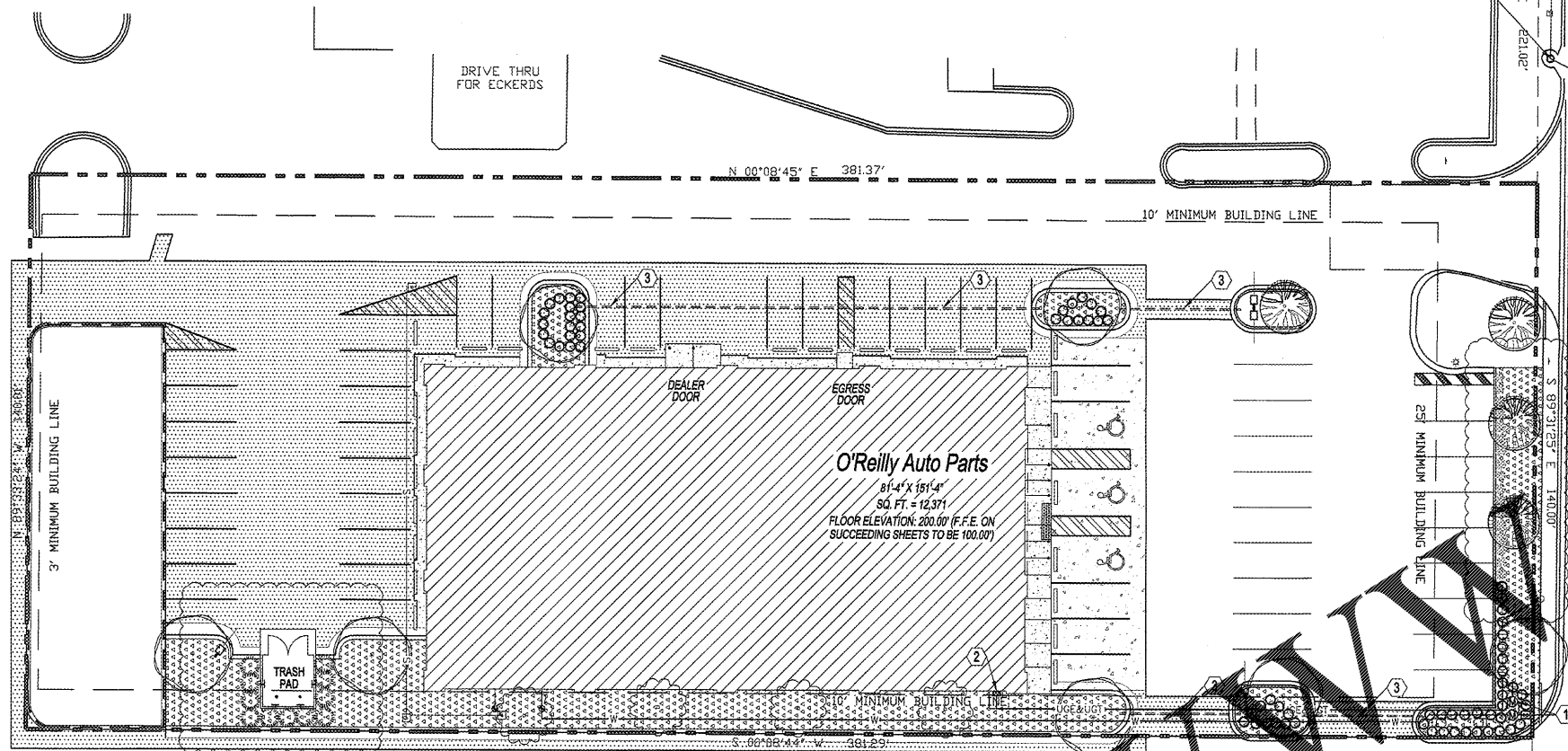


ZONED GENERAL COMMERCIAL  
 NEW YORK LIFE INSURANCE COMPANY  
 C/O MR. JIM ACKERMAN  
 LARGO, FLORIDA 33777-1230  
 18673-005-000

STORM DRAIN MANHOLE  
 TOP= 198.47  
 INVERT IN (18"RCP)=194.44  
 INVERT OUT(18"RCP)=194.42

BENCH MARK  
 RR SPIKE IN UTILITY POLE  
 ELEV.=200'  
 ASSUMED

DRIVE THRU  
 FOR ECKERDS



O'Reilly Auto Parts  
 81'-4" x 151'-4"  
 SQ. FT. = 12,371  
 FLOOR ELEVATION: 200.00' (F.F.E. ON  
 SUCCEEDING SHEETS TO BE 100.00')

ZONED GENERAL COMMERCIAL  
 KMART CORPORATION  
 1329 15th STREET WEST  
 PANAMA CITY, FLORIDA  
 18673-010-000

**1 LANDSCAPE IRRIGATION PLAN**  
 L2.1 SCALE: 1" = 20'-0"



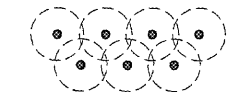
**CAUTION:**  
 THE CONTRACTOR IS RESPONSIBLE FOR MAKING HIS OWN  
 DETERMINATION AS TO THE TYPE AND LOCATION OF  
 UNDERGROUND IRRIGATION SYSTEM AND COORDINATE  
 INSTALLATION OF NEW IRRIGATION SYSTEM WITH  
 EXISTING SYSTEM TO THE EXTENT POSSIBLE.

**GENERAL NOTES**

- (A) REFER TO PROJECT MANUAL FOR ADDITIONAL REQUIREMENTS.
- (B) REFER TO CIVIL AND SITE UTILITY DRAWINGS FOR ADDITIONAL REQUIREMENTS. COORDINATE WORK WITH OTHER SITE RELATED DEVELOPMENT DRAWINGS.
- (C) PRIOR TO INSTALLATION, GENERAL CONTRACTOR TO CONFIRM THAT LIGHT POLES, LANDSCAPING AND UTILITIES CONFLICT WITH SIGN LOCATION SHOWN. IF ANY POTENTIAL CONFLICTS DISCOVERED, GENERAL CONTRACTOR IS TO CONTACT OWNER'S REPRESENTATIVE BEFORE PROCEEDING WITH THE WORK.
- (D) IRRIGATION SYSTEM TO BE DESIGNED BY CONTRACTOR FOR SHOWN COVERAGE AREAS INDICATED. CONTRACTOR SHALL BE RESPONSIBLE FOR PROVIDING COMPLETE AND OPERABLE IRRIGATION SYSTEM IN ACCORDANCE WITH GOVERNING CODES, ORDINANCES, AND AUTHORITIES HAVING JURISDICTION. SUBMIT SHOP DRAWINGS FOR REVIEW AND APPROVAL AS SPECIFIED.
- (E) VERIFY MINIMUM STATIC WATER PRESSURE IS AVAILABLE AT THE PROJECT SITE PRIOR TO DESIGN AND BEGINNING CONSTRUCTION.
- (F) COORDINATE IRRIGATION SYSTEM WITH LANDSCAPING AND PLANTING IN LANDSCAPE PLAN. WHEN TRENCHING AVOID TREE ROOT BLOCKS AND INSTALL HEADS AT APPROPRIATE LOCATIONS.
- (G) ADJUST ALL NOZZLES TO AVOID OVERTHROW ON SIDEWALKS, LAWNS, WALLS, ROADWAYS, AND BEYOND PROPERTY LINES, UNLESS OTHERWISE INDICATED. THROTTLE ALL IRRIGATION CONTROL VALVES AS REQUIRED TO PREVENT FOGGING. ADJUST ARC AND RADIUS OF REQUIRED SPRINKLERS AS NEEDED.
- (H) SET CONTROLLER RUN TIMES TO MATCH PLANT WATER NEEDS AND SOIL CONDITIONS.
- (I) INSTALL RISERS 18" FROM WALLS AND A MINIMUM OF 12" FROM ANY SIDEWALK OR ROAD.
- (J) TOP OF SPRAY AND ROTOR HEADS SHALL BE SET AT TOP OF SOD OR TOP OF MULCH LAYERS.
- (K) PROVIDE RAIN SENSOR AND ANTI-FREEZE ASSEMBLY ON IRRIGATION SYSTEM.
- (L) THE CONTRACTOR IS FULLY RESPONSIBLE FOR THE WORK UNTIL OWNER GIVES FINAL ACCEPTANCE.
- (M) ALL CIRCUIT PIPE IS TO BE CLASS 160 PVC OR HIGHER GRADE.
- (N) ALL MAIN FITTINGS SHALL BE REINFORCED WITH 2000 PSI POURED CONCRETE THRUST BLOCKS.
- (O) PROVIDE COMPRESSED AIR QUICK CONNECT BRASS FITTING IN VALVE BOX FOR WINTERIZATION. LOCATE AS CLOSE TO WATER SOURCE AS POSSIBLE.

**COVERAGE REQUIREMENTS**

IRRIGATION HEAD SHALL BE PLACED TO PROVIDE 100% OVERLAP HEAD-TO-HEAD COVERAGE.



**KEY NOTES**

- (1) APPROXIMATE LOCATION OF LAWN IRRIGATION METER WITH BACK FLOW PREVENTION PER CITY REQUIREMENTS. REFER TO SITE UTILITIES PLAN.
- (2) IRRIGATION CONTROLLER LOCATION INSIDE OF BUILDING. PROVIDE FREEZE SENSOR AND RAIN SENSOR ON OUTSIDE OF BUILDING.
- (3) 4" DIAMETER SCHEDULE 40 PVC SLEEVES UNDER PAVEMENT FOR ROUTING OF IRRIGATION SYSTEM. PROVIDE END CAPS AND PULL WIRE.

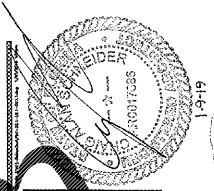
**SYMBOLS LEGEND**

- NOTE: REFER TO SURVEY SHEET FOR SYMBOLS LEGEND OF EXISTING CONDITIONS.
- NEW AREA OF IRRIGATION SYSTEM COVERAGE
  - NEW SHRUB PLANTING
  - NEW TREE PLANTING

**CAUTION:**  
 INFORMATION ON THIS DRAWING CONCERNING TYPE AND LOCATION OF UNDERGROUND AND OTHER UTILITIES IS NOT GUARANTEED TO BE ACCURATE OR ALL INCLUSIVE. THE CONTRACTOR IS RESPONSIBLE FOR MAKING HIS OWN DETERMINATION AS TO THE TYPE AND LOCATION OF UNDERGROUND AND OTHER UTILITIES AS MAY BE NECESSARY TO AVOID DAMAGE THERETO.



**Know what's below  
 Call before you dig.**



**CRAIG A. SCHNEIDER, AIA**  
 ARCHITECT  
 417.862.0000  
 417.862.3265  
 e-mail: architect@esterfschneider.com

PROJECT:  
**NEW O'REILLY AUTO PARTS STORE**  
 1345 15TH STREET  
 PANAMA CITY, FL #1  
**LANDSCAPE IRRIGATION PLAN**

**O'Reilly AUTO PARTS**  
 CORPORATE OFFICES  
 233 SOUTH PATTERSON  
 SPRINGFIELD, MISSOURI 65802  
 (417) 862-2674 TELEPHONE

COMM # 4275  
 DATE: 1-4-19  
 REVISION DATE: 1-9-19

**Order Plans**