



PANDA EXPRESS, INC.
1683 Walnut Grove Ave.
Rosemead, California
91770
Telephone: 626.799.9898
Facsimile: 626.372.8288

All ideas, designs, arrangement and plans indicated or represented by this drawing are the property of Panda Express Inc. and were created for use on this specific project. None of these ideas, designs, arrangements or plans may be used by or disclosed to any person, firm, or corporation without the written permission of Panda Express Inc.

Table with 2 columns: Revisions, Date. Includes entries for Jurisdictional Comments on 11-29-18.

Table with 2 columns: Issue Date, Date. Includes entries for Building Permit on 08-16-18 and Bid on 11-29-18.

Project No. PE1804
PANDA PROJECT # S8-19-06558
ARCH PROJECT # 1804

Kurzynski & Associates
CONSULTING ENGINEERS
2900 Lebanon Pike
Suite 201
Nashville, Tennessee 37214

PANDA EXPRESS
US 98 and PORTSIDE DRIVE
3868 GULF BREEZE PARKWAY
GULF BREEZE, FL
2200 TRUE - R1 - DAB 12

E-601

PANELS, SINGLE LINE, LOAD CALC'S

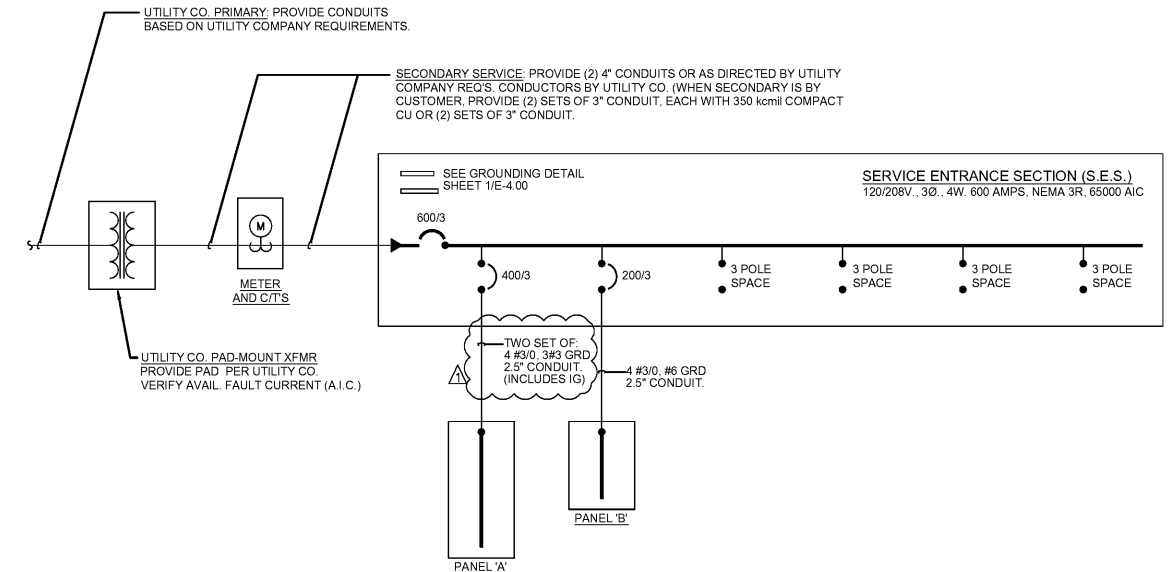
PANELBOARD SCHEDULE - PANEL-SES. Table with columns: Panelboard Description, Breaker Options, Loads, and a detailed load summary table at the bottom.

PANELBOARD SCHEDULE - PANEL-B. Table with columns: Panelboard Description, Breaker Options, Loads, and a detailed load summary table at the bottom.

PANELBOARD SCHEDULE - PANEL-A. Table with columns: Panelboard Description, Breaker Options, Loads, and a detailed load summary table at the bottom.

PANELBOARD NOTES. List of notes A through D regarding personnel protection ground fault circuit interrupters, GFCI breakers, shunt-trip breakers, and panel recessing.

PANEL SCHEDULES 1
NOT TO SCALE E-601



ELECTRICAL SERVICE ENTRANCE COORDINATION. Table listing items, contractor, and utility company responsibilities for service entrance components.

- 7. UNLESS NOTED, ALL DEVICES AND TERMINATIONS 100 AMPS AND LESS TO BE RATED FOR 60°C WIRE, OVER 100 AMPS, 75°C WIRE.
CONTRACTOR TO SUBMIT SERVICE ENTRANCE GEAR SHOP DRAWINGS TO SERVING UTILITY COMPANY FOR APPROVAL.
ALL WIRE #8 AND SMALLER TO BE THWN/THHN CU.; #6 AND LARGER TO BE XHHW CU.
THE DESIGN PROFESSIONAL HAS PERFORMED ALL REQUIRED LOAD CALCULATIONS AND VERIFIES THAT ALL UPSTREAM PANELS AND EQUIPMENT ARE NOT OVERLOADED.

SERIES RATING NOTES 4
NOT TO SCALE E-601

SINGLE LINE DIAGRAM 2
NOT TO SCALE E-601