



PANDA EXPRESS, INC.
1683 Walnut Grove Ave.
Rosemead, California
91770
Telephone: 626.799.9898
Facsimile: 626.372.8288

All ideas, designs, arrangement and plans indicated or represented by this drawing are the property of Panda Express Inc. and were created for use on this specific project. None of these ideas, designs, arrangements or plans may be used by or disclosed to any person, firm, or corporation without the written permission of Panda Express Inc.

REVISIONS:

1	JURISDICTIONAL COMMENTS	11-29-18
---	-------------------------	----------

ISSUE DATE:

1st	ISSUE FOR BUILDING PERMIT	08-16-18
2nd	ISSUE FOR BID	11-29-18

DRAWN BY: RR

PANDA PROJECT # S8-19-D6558
ARCH PROJECT # 1804



PANDA EXPRESS
US 98 and PORTSIDE DRIVE
3868 GULF BREEZE PARKWAY
GULF BREEZE, FL
2200 TRUE - R1 - DAB 12

E-101
LIGHTING FLOOR PLAN

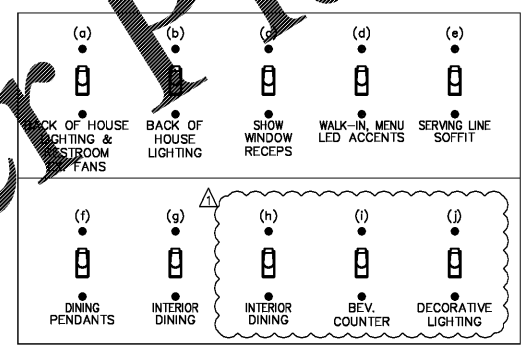
- ALL FLUORESCENT FIXTURES SHALL HAVE ELECTRONIC BALLASTS WITH 20% OR LESS THD.
- CONTRACTOR SHALL PROVIDE ALL REQUIRED HARDWARES, BRACKETS, ETC. FOR A COMPLETE INSTALLATION.
- ALL LIGHTING FIXTURES SHALL BE SUPPORTED PER N.E.C. 410-16(C). SEE DETAIL, SHEET 4 / E-4.00.
- CONTRACTOR SHALL INSTALL ALL LIGHTING FIXTURES INCLUDING OWNER-FURNISHED FIXTURES.
- ALL FIXTURE BALLASTS SHALL BE U.L. LISTED.
- G.C. SHALL INSTALL OWNER SUPPLIED LED & CUT TO PROPER LENGTH
- ALL MULTI-WIRE BRANCH CIRCUITS SHALL HAVE MEANS TO SIMULTANEOUSLY DISCONNECT ALL UNGROUNDED CONDUCTORS AT THE POINT WHERE THE BRANCH CIRCUIT ORIGINATES TO MEET THE REQUIREMENTS OF 2014 NEC 210.4(B).
- ALL FLUORESCENT FIXTURES SHALL HAVE INTEGRAL DISCONNECTING MEANS PER 2005 NEC 410.73(G) and 2008 NEC 410.130(G)(1).
- ALL CIRCUITRY SHOWN WITHOUT TICKS SHALL HAVE (2) WIRES PLUS EQUIPMENT GROUNDING CONDUCTOR.
- 'N.L.' DESIGNATION INDICATES NIGHT LIGHT ON UNSWITCHED CIRCUIT.
- CONTRACTOR TO ENSURE THAT LEFT OVER DISTANCE FOR EXTERIOR FIXTURES SHALL BE EQUAL ON BOTH SIDES, AND SHALL NOT TO HAVE ANY GAP BETWEEN THE LIGHTING FIXTURE

LIGHTING GENERAL NOTES 2
NOT TO SCALE E-101

- SWITCHBANK 'A' REFER TO SCHEDULE THIS SHEET (4/ E-101)
- ROUTE HOMERUN THROUGH LIGHTING SWITCHBANK 'A' (SWITCHES AS NOTED IN LOWER CASE) AND THROUGH INTERIOR LIGHTING CONTROL PANEL. REFER TO SCHEDULE (4/ E-101) FOR MORE INFORMATION.
- ROUTE THROUGH CONTACTS IN HOOD CONTROL PANEL 'M4' FOR CIRCUIT POWER. REFER TO DETAILS, SHEETS 3 / E-4.01.
- PROVIDE SEPARATE UNSWITCHED HOT CONDUCTOR (SAME CIRCUIT, NOT CONTROLLED BY SWITCH IN SWITCHBANK) TO LOCALLY SWITCHED FIXTURES AND EMERGENCY FIXTURE BATTERY TRIGGER LEADS.
- DUPLEX RECEPTACLE AT SOFFIT FOR LED ROPE. INSTALL ON BACK OF BULKHEAD ABOVE CEILING. REFER TO DETAILS, SHEET A-402 FOR MORE INFORMATION.
- WALK-IN COOLER LIGHT FIXTURES AND PILOT LIGHT SWITCH PROVIDED WITH COOLER. REFER TO 'COOLER EVAPORATOR COIL' WIRING DIAGRAM, SHEET 8 / E-4.00.
- WALK-IN FREEZER LIGHT FIXTURE AND PILOT LIGHT SWITCH PROVIDED WITH FREEZER. REFER TO 'FREEZER LTG AND DOOR HEATER WIRING DIAGRAM', SHEET 10 / E-4.00.
- EXHAUST FAN SHALL BE TIED INTO BACK OF HOUSE LIGHTING CIRCUIT AND SWITCH CONTROL.
- FIXTURES THIS ROOM SHALL BE LOCALLY SWITCHED.
- LIGHTING INVERTER TO BE MOUNTED ABOVE THE ELECTRICAL PANELS, NEXT TO CEILING.
- LED TRANSFORMER LOCAL MOUNT ABOVE FIXTURES.
- FLUSH MOUNTED AUTOMATIC LIGHTING CONTROL PANEL FEED FROM PANEL-B. CONTRACTOR SHALL ROUTE INTERIOR LIGHTING CIRCUITS THRU CONTROL PANEL. FIELD COORDINATE MOUNTING LOCATION AND TIMER SETTINGS WITH PANDA CONSTRUCTION MANAGER.
- AUTOMATIC LIGHTING CONTROLS OVERRIDE SWITCH. MOUNT ABOVE SWITCH BANK. LABEL SWITCH ACCORDINGLY.
- WALL SWITCH OCCUPANCY SENSOR. SEE ELECTRICAL SYMBOLS LIST SHEET E-008 FOR MORE INFORMATION.

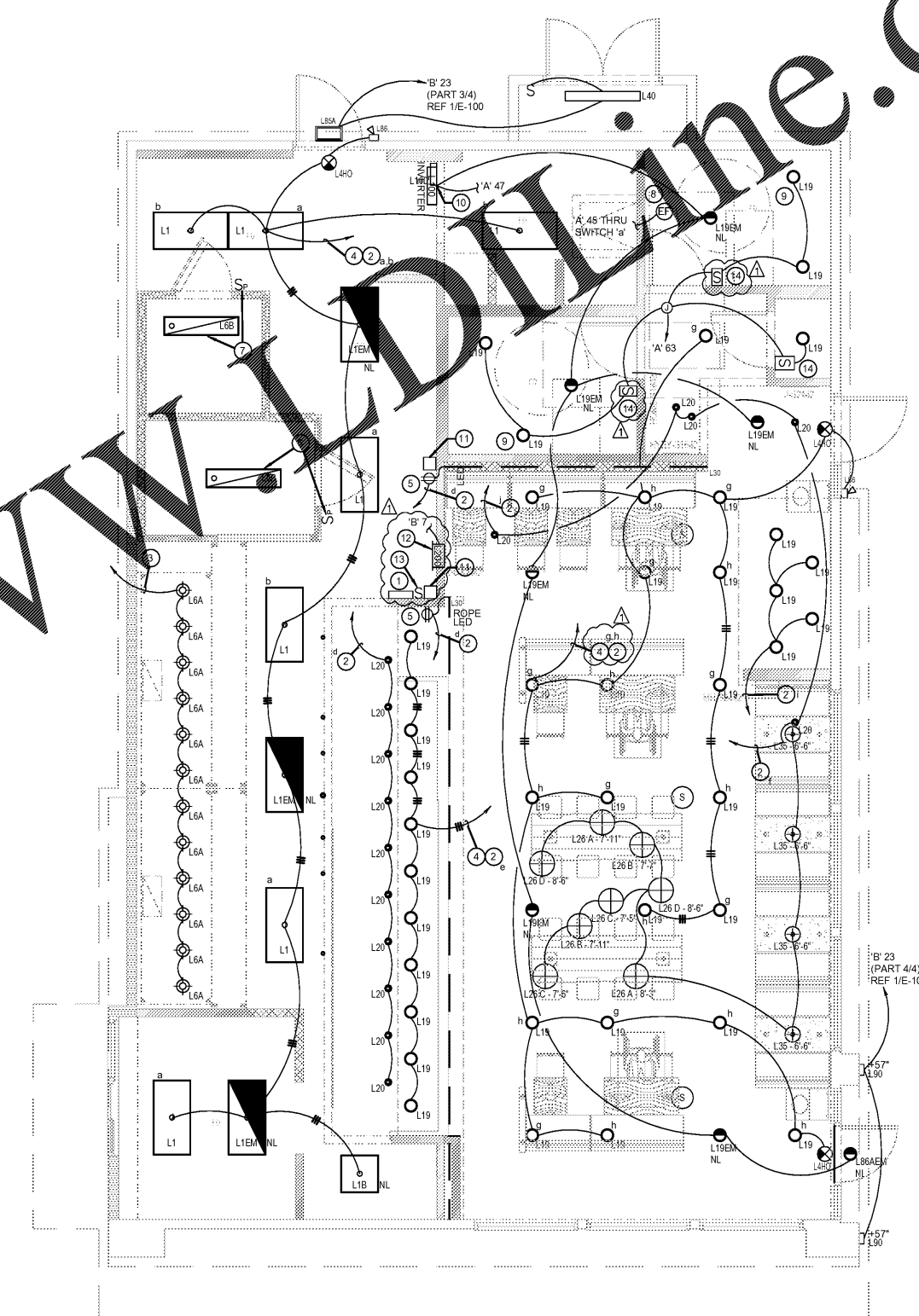
LIGHTING KEYED NOTES 3
NOT TO SCALE E-101

NOTE:
CONTRACTOR TO PROVIDE (2) 5 GANG SWITCH BOXES AS SHOWN BELOW. DO NOT INSTALL SEPARATE INDIVIDUAL BOXES FOR EACH SWITCH.



SWITCHBANK SCHEDULE 'A'				
TAG	SWITCH TYPE	AREA SERVED / SWITCH LABEL	CIRCUIT	LOAD
a	TOGGLE SWITCH	BACK-OF-HOUSE / RR FANS	'A' 45	823 VA
b	TOGGLE SWITCH	BACK-OF-HOUSE	'A' 45	823 VA
c	TOGGLE SWITCH	SHOW WINDOW RECEP	'A' 49	540 VA
d	TOGGLE SWITCH	WALK-INS, MENU, LED ACCENTS	'A' 1	614 VA
e	TOGGLE SWITCH	SERVING LINE SOFFIT	'A' 47	154 VA
f	TOGGLE SWITCH	DINING PENDANTS	'A' 47	423 VA
g	TOGGLE SWITCH	INTERIOR DINING	'A' 47	140 VA
h	TOGGLE SWITCH	INTERIOR DINING	'A' 47	140 VA
i	TOGGLE SWITCH	BEVERAGE COUNTER	'A' 47	70 VA
j	TOGGLE SWITCH	DECORATIVE LIGHTING	'A' 47	250 VA

LIGHTING SWITCHBANK SCHEDULE 4
NOT TO SCALE E-101



LIGHTING FLOOR PLAN 1
Scale: 1/4"=1'-0" E-101

Order Plans