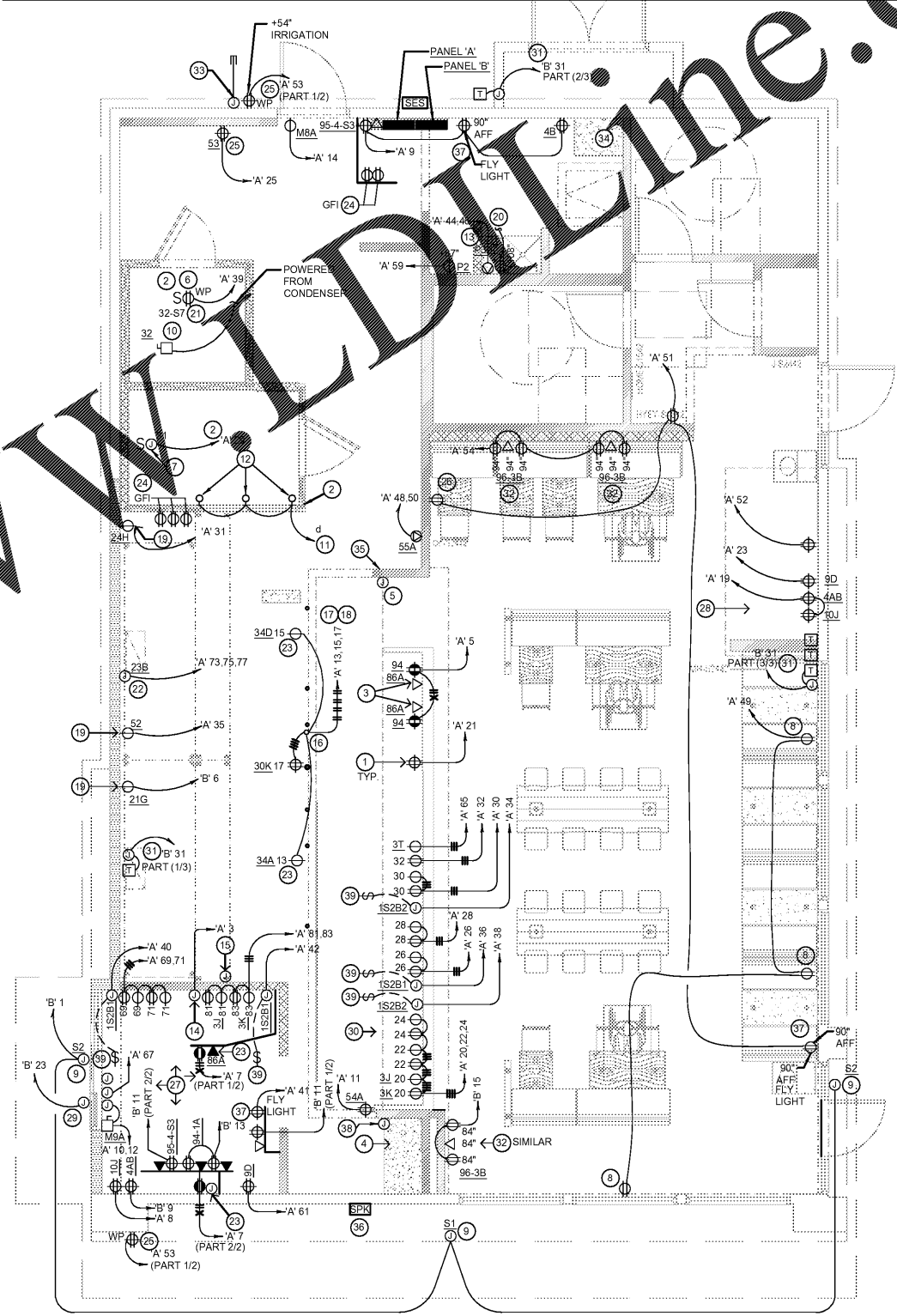


NO UNDER SLAB ELECTRICAL WORK ALLOWED UNLESS OTHERWISE NOTED ON PLAN.



ALL 120 VOLT, 20 AMP RECEPTACLES LOCATED UNDER COUNTERS WITHIN SERVING AREA 101, DRIVE-THRU 102, AND KITCHEN 103 TO BE SERVED FROM GFCI-TYPE CIRCUIT BREAKERS PER NEC 210.8 (B) (2).

1. ALL CIRCUITRY/CONDUIT FOR FRONT LINE EQUIPMENT TO BE ROUTED IN CASEWORK TO J-BOX IN WALL AND CONCEAL IN WALL.
2. PROVIDE SEALS AND EXPANSION COUPLINGS ON ALL CONDUITS ENTERING / LEAVING AREA OF TEMPERATURE DIFFERENCE.
3. PROVIDE (2) 1-1/2" CONDUITS WITH PULL STRINGS FROM CASH REGISTER TO MANAGER STATION. SEE P.O.S. AND SERVICE LINE ELEVATIONS, SHEET 3/E-200.
4. SEE 'MANAGER STATION ELEVATION' 1 / E-200 FOR ADDITIONAL OUTLETS AND J-BOXES.
5. ANSUL PULL STATION. REFER TO DETAIL, SHEET 2 / E-400.
6. REFER TO 'LTG AND DOOR HEATER WIRING DIAGRAM, SHEET 10 / E-400.
7. REFER TO 'COOLER EVAPORATOR COIL' WIRING DIAGRAM, SHEET 8 / E-400.
8. SHOW WINDOW RECEPTACLE SHALL BE CONTROLLED VIA SWITCH 'c'. REFER TO LIGHTING SWITCHBANK SCHEDULE, SHEET 4/E101. RECEPTACLE SHALL BE MOUNTED IN WALL AS CLOSE TO TOP OF STRUCTURAL HEADER AS POSSIBLE.
9. W.P. J-BOX FOR SIGNAGE. COORDINATE LOCATION WITH ARCHITECT / OWNER / SIGN PACKAGE. SIGN DISCONNECT PROVIDED BY SIGN CONTRACTOR.
10. REFER TO 'FREEZER EVAPORATOR COIL' WIRING DIAGRAM, SHEET 9 / E-400. CONNECTION FOR HEAT TRACE TAPE INCLUDED IN FREEZER EVAPORATOR COIL. HEAT TAPE PROVIDED AND INSTALLED BY ELECTRICIAN.
11. ROUTE HOMERUN THROUGH LIGHTING SWITCHBANK 'A' (SWITCH AS NOTED IN LOWER CASE). REFER TO SCHEDULE, SHEET 4/E-101, FOR MORE INFORMATION.
12. CONNECT TO VEGETABLE DISPLAY LIGHTING PROVIDED WITH WALK-IN COOLER.
13. WATER HEATER. FEED RECEPTACLE WITH 2 #8, #10 GROUND, 3/4" CONDUIT. FURNISH AND INSTALL RECEPTACLE AND CORD AND PLUG. COORDINATE THE EXACT CONFIGURATION WITH THE WATER HEATER SUPPLIER.
14. HOOD CONTROL PANEL/ANSUL SYSTEM CABINET. MOUNT CABINET DIRECTLY BELOW T-BAR CEILING.
15. PROVIDE 2-GANG J-BOX @ 48" AFF FOR HOOD CONTROL SWITCHES. REFER TO M-400 AND M-401.
16. CONDUIT STUB UP LOCATION IN STAINLESS STEEL POWER PANEL FOR ISLAND KITCHEN EQUIPMENT CONNECTION. REFER TO DETAIL 2/A-109. COORDINATE LOCATION WITH ARCHITECT / OWNER.
17. ROUTE CABLING / CIRCUITRY THROUGH CONDUIT IN SLAB (KEYED NOTE #16).
18. UTILIZE SEAL TIGHT CONDUIT FOR ALL WIRING INCLUDED ALONG LOW WALL PANEL.
19. ALL DEVICES UNDER HOOD TO BE PROVIDED AND INSTALLED WITH SHUNT TRIP CIRCUIT BREAKER AND WATERPROOFING BOX (RED DOT #CKSU). REFER TO COOKLINE ELECTRICAL ELEVATION, SHEET 6/E-200.
20. OUTLET TO BE CONNECTED TO BACK-OF-HOUSE LIGHTING CIRCUITRY CONTROL. CONTRACTOR TO PROVIDE CORDSET FOR RECIRC PUMP.
21. PROVIDE WEATHERPROOF RECEPTACLE FOR HEAT TAPE. COORDINATE EXACT LOCATION WITH REFRIGERATION INSTALLER.
22. ELECTRIC GRILL '23B'. FEED WITH 3 #8, #10 GROUND, 3/4" CONDUIT. REFER TO DETAIL, SHEET 4 / E-200.
23. SEE DRIVE THRU ELEVATION, SHEET 2/E-200 FOR CONDUIT SIZES AND CONFIGURATIONS.
24. FURNISH AND INSTALL (2) HUBBELL (TYPE 20) RECESSED GFCI (OR EQUIVALENT) (1) FOR EACH CIRCUIT FEEDING EQUIPMENT UNDER THE KITCHEN HOOD WHICH UTILIZES SIMPLEX 120V RECEPTACLES. KITCHEN HOODS TO BE INSTALLED IN AN ACCESSIBLE LOCATION IN THIS GENERAL AREA, OR AS DIRECTED BY THE OWNER, ARCHITECT OR ELECTRICAL ENGINEER. PROVIDE ADDITIONAL OUTLETS AS REQUIRED TO FEED ALL SUCH HOODS BEHIND HOOD. FASTEN A PLASTIC LABEL STAMPING CIRCUIT AND EQUIPMENT SERVED FOR EACH OUTLET.
25. PROVIDE WP, IN-USE RECESSED DOT (S2).
26. CONTRACTOR TO ENSURE THAT ELECTRICAL OUTLET SHOWN FALLS BENEATH TABLE TOP. REFER TO ARCHITECTURAL FURNITURE PLAN FOR EXACT LOCATION.
27. SEE DRIVE-THRU ELEVATIONS, 2/E-200.
28. SEE DRINK STATION ELEVATIONS, SHEET 5/E-200.
29. CONTRACTOR TO FURNISH J-BOX FOR AWNING LIGHT FIXTURES. COORDINATE IN FIELD FOR EXACT LOCATION FOR J-BOX AND ANY ADDITIONAL REQUIREMENTS PRIOR TO START ANY WORK AND INCLUDE ALL ASSOCIATED COSTS IN THE BID.
30. SEE 3/E-200 FOR SERVICE LINE ELEVATIONS.
31. CONTRACTOR TO FURNISH (1) J-BOX (WITH PULL-WIRE) AT THIS LOCATION FOR SET OF EXTERIOR VERTICAL LIGHT FINNS. THE 'SET OF FINNS' ARE POWERED FROM CEILING MOUNTED TRANSFORMERS THAT ARE TO BE LOCATED ABOVE THE CEILING OF THE INTERIOR. UTILIZE CIRCUIT B-31 FROM PANELBOARD B. PROVIDE SEAL TIGHT PENETRATIONS AS REQUIRED. COORDINATE IN FIELD FOR EXACT LOCATIONS FOR J-BOX AND ANY ADDITIONAL REQUIREMENTS PRIOR TO START OF ANY WORK AND INCLUDE ALL ASSOCIATED COSTS IN THE BID.
32. SEE DINING ROOM MONITOR ELEVATION, SHEET 8/E-200.
33. PROVIDE AND INSTALL 3/4" CONDUIT AND PULL STRING FROM CLOSEST LANDSCAPE AREA, THROUGH WALL UP TO EMPTY FLUSH MOUNTED JUNCTION BOX @ 54" A.F.F. (FOR IRRIGATION CONTROLS). CLOSE OFF CONDUIT IN LANDSCAPE AREA WITH REMOVABLE CAP. UTILIZE CIRCUIT 'B'-7.
34. REFER TO SHEET 9/E-200 FOR INSTALLATION OF CO2 MONITOR.
35. SEE SWITCH BANK ELEVATION, SHEET 7/E-200.
36. OUTDOOR SPEAKER TO BE MOUNTED ON THE SIDE OF CANOPY. FIELD COORDINATED LOCATION WITH PROJECT MANAGER. CONTRACTOR TO PROVIDE AND INSTALL CONDUIT WITH PULL STRING WIRES IN 3/4" CONDUIT IN EXTERIOR WALL CAVITY, UP TO ABOVE ADJACENT CEILING. CONTRACTOR TO COORDINATE WITH OWNER FOR EXACT LOCATION OF CONDUIT ANY FURTHER CLARIFICATION AND INCLUDE ALL ASSOCIATED COSTS IN THE BID. FINAL LOCATION OF SPEAKER TO BE ON CANOPY CLOSEST TO PATIO SEATING. COORDINATE WITH PANDA PROJECT MANAGER.
37. FLY LIGHT RECEPTACLE SHALL BE INSTALLED WITH A RECESSED CLOCK OUTLET. TYP OF 3 LOCATIONS.
38. SEE SECURITY KEY PAD ELEVATION 1/E200.
39. CONNECT HEAT LAMPS TO COUNTER-MOUNTED SWITCH PROVIDED AND INSTALLED BY CONTRACTOR. REFER TO PLAN FOR LOCATIONS AND QUANTITIES.

1. ALL ELECTRICAL WORK TO BE COMPLETED PRIOR TO ROUGH IN.
2. ALL TELEPHONE, DATA CABLES AND WIRES, AND TERMINATES ALL REQUIRED CABLE AND JACKS WILL BE INSTALLED BY THIRD PARTY.
3. OWNER SUPPLY FOR COMPUTER, CASH REGISTER (81, & 86, OR 87A, & 81) SHALL BE ON THE SAME CIRCUIT. BREAKER, WISOLATED GROUND & ORANGE RECEPTACLE.
4. ALL CIRCUITRY SHOWN WITHOUT TICKS SHALL HAVE (2) WIRES PLUS EQUIPMENT GROUNDING CONDUCTOR.
5. ALL MULTI-WIRE BRANCH CIRCUITS SHALL HAVE MEANS TO SIMULTANEOUSLY DISCONNECT ALL UNGROUNDED CONDUCTORS AT THE POINT WHERE THE BRANCH CIRCUIT ORIGINATES TO MEET THE REQUIREMENTS OF 2014 NEC 210.4(B).
6. TRANSFORMERS SHALL BE MOUNTED ABOVE CEILING BELOW TRUSSES WITH LOW VOLTAGE WIRING FEEDING TO ALL EXTERIOR LIGHTS.

POWER PLAN GENERAL NOTES 2
NOT TO SCALE E-100

POWER PLAN KEYED NOTES 3
NOT TO SCALE E-100

POWER FLOOR PLAN 1
Scale: 1/4"=1'-0" E-100

Order Plans @ WWW.ONLINE.COM



PANDA EXPRESS, INC.
1683 Walnut Grove Ave.
Rosemead, California
91770
Telephone: 626.799.9898
Facsimile: 626.372.8288

All ideas, designs, arrangement and plans indicated or represented by this drawing are the property of Panda Express Inc. and were created for use on this specific project. None of these ideas, designs, arrangements or plans may be used by or disclosed to any person, firm, or corporation without the written permission of Panda Express Inc.

REVISIONS:

ISSUE DATE:

1st	ISSUE FOR BUILDING PERMIT	08-16-18
2nd	ISSUE FOR BID	11-29-18

DRAWN BY: RR
PANDA PROJECT # S8-19-D6558
ARCH PROJECT # 1804



PANDA EXPRESS
US 98 and PORTSIDE DRIVE
3868 GULF BREEZE PARKWAY
GULF BREEZE, FL
2200 TRUE - R1 - DAB 12

E-100
POWER FLOOR PLAN