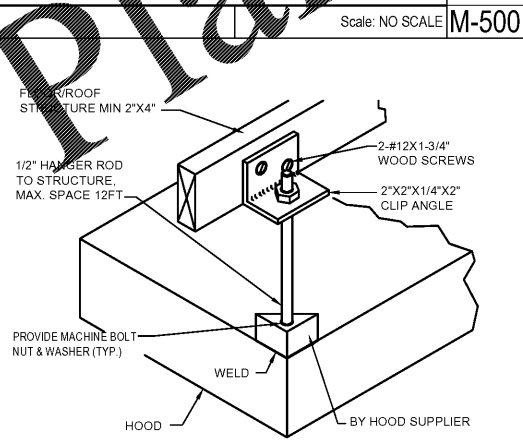


HOOD CLIP AT WALL 14
Scale: NO SCALE M-500



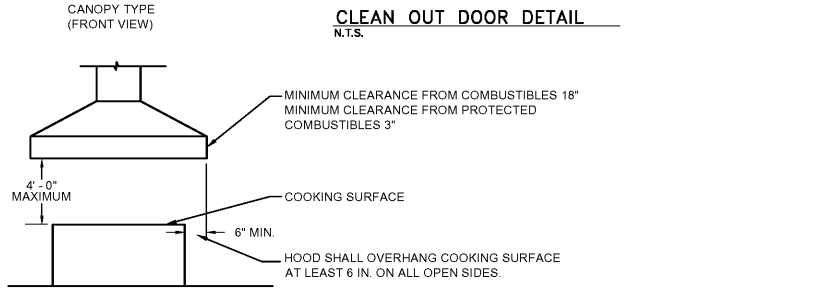
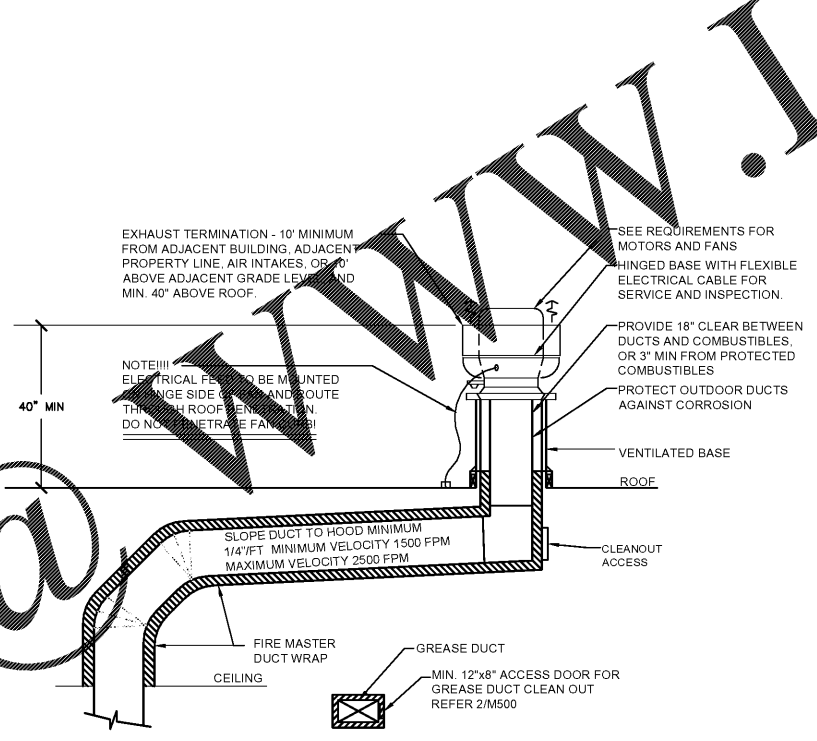
HOOD SUPPORT AT TRUSS 13
Scale: NO SCALE M-500

PERFORMANCE TEST FOR LISTED MECHANICAL HOOD IS REQUIRED PER UMC 509.11

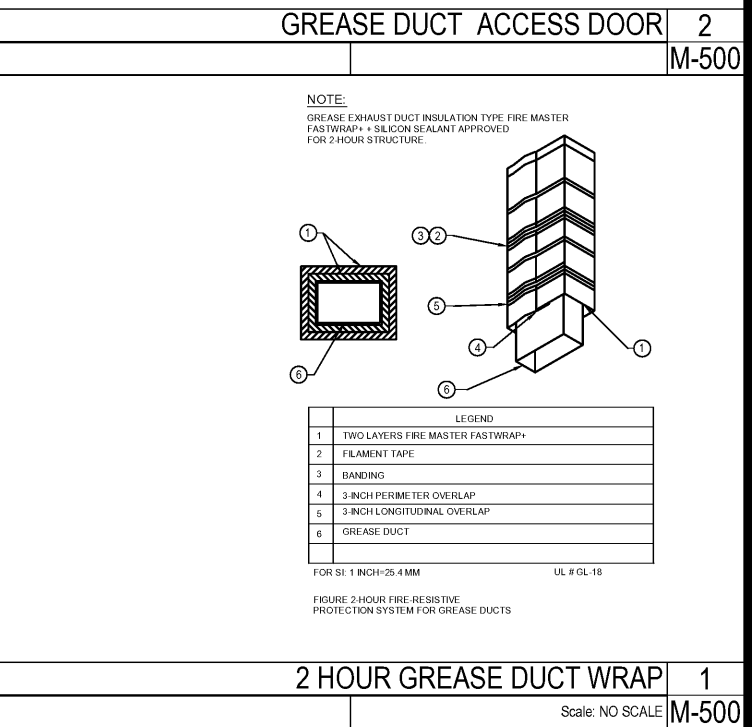
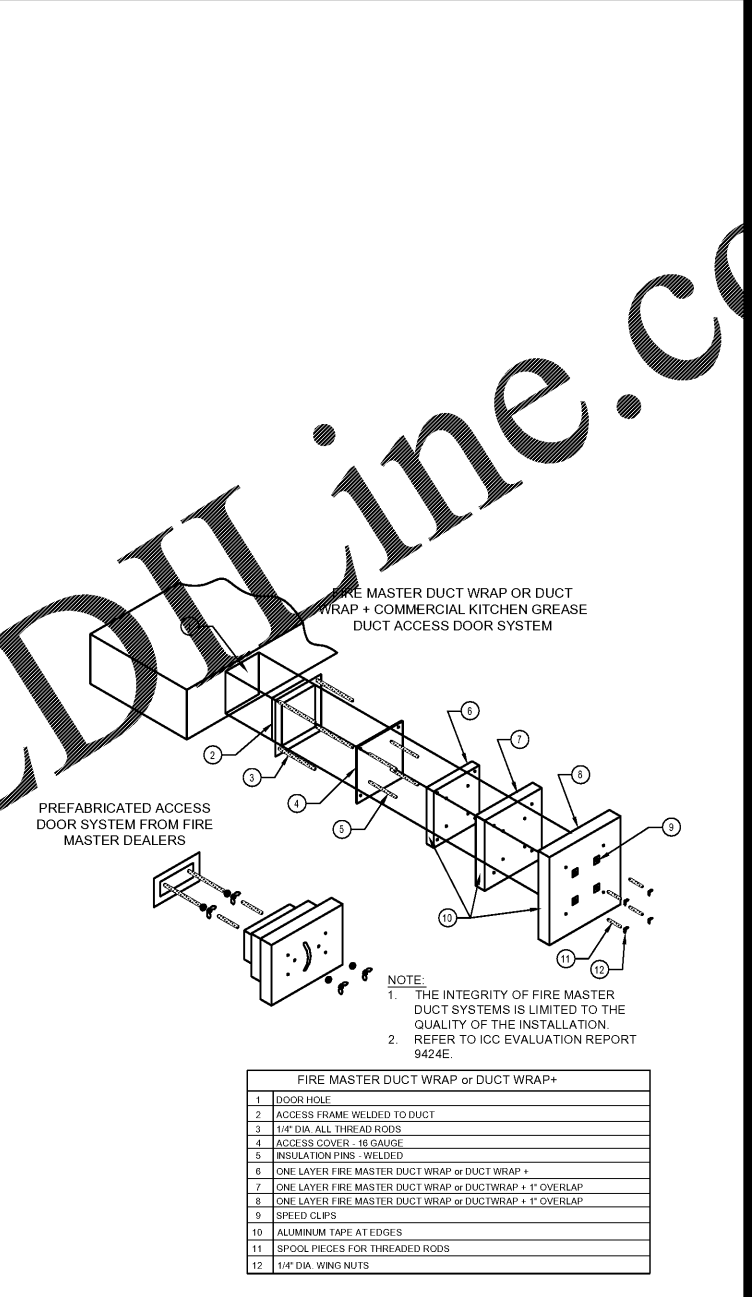
- GREASE HOOD SYSTEM CALCULATION**
1. TYPE - CANOPY TYPE I, STAINLESS STEEL 18 GAUGE.
 2. COOKING EQUIPMENT: (2) CHINESE RANGE, (2) DEEP FRYER, RICE COOKER
 3. SIZE: 23'-6" x 4'-0" + 2'-0" MAKEUP AIR PLENUM
 4. MIN. REQ'D CAPACITY CFM: (2) U.L. LISTED HOOD @ 3,450 CFM EACH
 5. PROPOSED (2) EXHAUST FAN & (1) MAKE-UP AIR UNIT: EF1 & EF2 (3,450 CFM EACH); MAU1 (5,520 CFM, 80% OF EXHAUST)
 6. EXHAUST DUCT SIZE: 22"x14"
 7. EXHAUST VELOCITY @ EXHAUST DUCT 3450/(22"x14"x144")= 1612 FPM 1500FPM < 1612 FPM < 2500FPM
 8. EXHAUST FAN (EF1 & EF2) AND MAKE-UP AIR UNIT (MAU1) SHALL BE ELECTRICALLY INTERLOCKED
 9. FOR CODE COMPLIANCE SEE DETAIL
 10. FOR FILTER INFORMATION SEE CAPTIVEAIRE DWG #M-400
 11. INTERLOCK RTU FANS TO OPERATE WITH KEF'S FOR MAKEUP AIR

- INFORMATIONAL GUIDE FOR COMMERCIAL COOKING HOODS**
1. STAINLESS STEEL TO BE NO. 18 U.S. GAGE.
 - WHEN GUTTERS ARE PROVIDED THEY SHALL DRAIN TO A COLLECTING PAN WHICH IS READILY ACCESSIBLE FOR CLEANING
 - SEE TABLE 507.11 FOR MINIMUM DISTANCE BETWEEN LOWER EDGE OF GREASE FILTER AND THE COOKING OR HEATING SURFACE.
 - GREASE FILTERS SHALL BE OF STEEL CONSTRUCTION AND READILY ACCESSIBLE FOR CLEANING.
 - ALL JOINTS AND SEAMS SHALL BE GREASE TIGHT.
 - HOODS SHALL BE SECURELY FASTENED IN PLACE BY INCOMBUSTIBLE SUPPORTS.

- NOTES**
1. PROVIDE ADEQUATE CLEANOUT OPENINGS FOR THOROUGH CLEANING OF DUCT SYSTEM.
 2. PROVIDE ADEQUATE MAKE-UP AIR FOR PROPER OPERATION.
 3. PROVIDE A SEPARATE DUCT SYSTEM FOR EACH HOOD.
 4. THICKNESS OF DUCTS SHALL BE:
DUCT AREA U.S. GAGE STEEL
UP TO 4 SQ. FT. 16 GA
OVER 4 SQ. FT. 14 GA
 5. WELD OR BRAZE ALL DUCT JOINTS AND SEAMS ON THE EXTERNAL SURFACE.
 6. SUPPORT THE DUCTS AS REQUIRED. DO NOT PENETRATE DUCT WALLS WITH SCREWS, NAILS, ETC.
 7. SECTIONS OF DUCT SHALL NOT CONTAIN GREASE POCKETS.



HOOD VENTILATION AND SECTION 5
Scale: NO SCALE M-500



PANDA EXPRESS, INC.
1683 Walnut Grove Ave.
Rosemead, California 91770
Telephone: 626.799.9898
Facsimile: 626.372.8288

All ideas, designs, arrangement and plans indicated or represented by this drawing are the property of Panda Express Inc. and were created for use on this specific project. None of these ideas, designs, arrangements or plans may be used by or disclosed to any person, firm, or corporation without the written permission of Panda Express Inc.

REVISIONS:

ISSUE DATE:

1st	ISSUE FOR BUILDING PERMIT	08-16-18
2nd	ISSUE FOR BID	11-29-18

DRAWN BY: RR

PANDA PROJECT # S8-19-D6558
ARCH PROJECT #: 1804

Project No. PE1804

Kurzynski & Associates
CONSULTING ENGINEERS
2900 Lebanon Pike Suite 201
Nashville, Tennessee 37214

PANDA EXPRESS
US 98 and PORTSIDE DRIVE
3868 GULF BREEZE PARKWAY
GULF BREEZE, FL
2200 TRUE - R1 - DAB 12

M-500

KITCHEN HOOD DETAILS