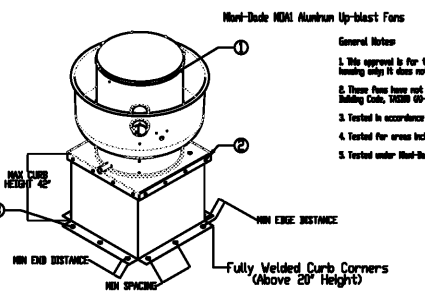
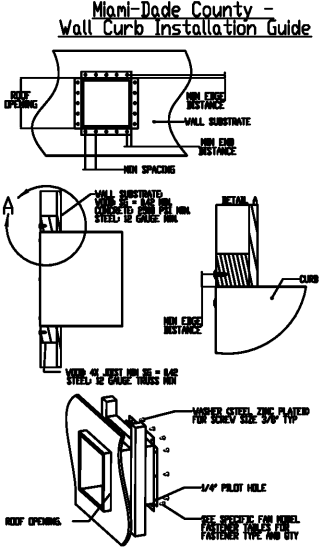
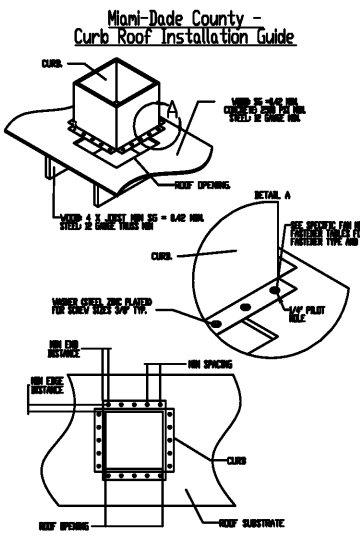


**DESIGN PRESSURE: +300 / -300 PSF  
LARGE MISSILE IMPACT RESISTANT**

INSTALLATION FASTENER TYPES				
	Fan To Curb	Wood (SG = 0.42 Min.)	Steel (12 Gauge Min.)	Concrete (2500 psi Min. Cracked Concrete)
Fastener	1 1/4" x 1 1/2" Self Drilling Screw (A307 OR BETTER)	3/8" Dia. Zinc Plated Lag Bolt	1/4" - 14 Drill Flex Self Drilling Screw	3/8" Dia. SS HBB Kwik Bolt T2 Expansion Anchor
Minimum Thread Penetration	N/A	2"	12 Gauge	2.5/16"
Minimum Edge Distance	N/A	1-1/2"	3/8"	3"
Minimum End Distance	N/A	2-5/8"	3/8"	4"
Minimum Spacing	N/A	1-1/2"	3/4"	7"

INSTALLATION FASTENER QTY												
Fan Model	Curb to Fan			Wood			Steel			Concrete		
	Long Side	Short Side	Total	Long Side	Short Side	Total	Long Side	Per Side	Total	Long Side	Short Side	Total
Direct Free 2	5	2	14	18	5	30	0	4	24	9	4	28

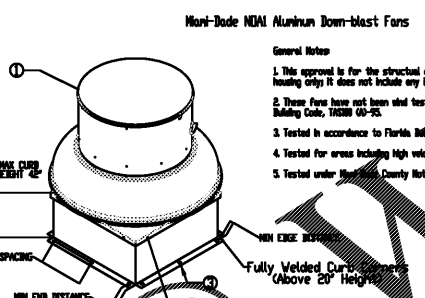


**DESIGN PRESSURE: +300 / -300 PSF  
LARGE MISSILE IMPACT RESISTANT**

INSTALLATION FASTENER TYPES				
	Fan To Curb	Wood (SG = 0.42 Min.)	Steel (12 Gauge Min.)	Concrete (2500 psi Min. Cracked Concrete)
Fastener	5/16" - 18 x 2" Self Drilling Screw (E300 DRILL FLEX OR BETTER)	3/8" Dia. Zinc Plated Lag Bolt	1/4" - 14 Drill-Flex Self Drilling Screw	3/8" Dia. SS HBB Kwik Bolt T2 Expansion Anchor
Minimum Thread Penetration	N/A	2-1/2"	12 Gauge	2"
Minimum Edge Distance	N/A	1-1/2"	3/8"	3"
Minimum End Distance	N/A	2-5/8"	3/8"	3"
Minimum Spacing	N/A	1-1/2"	3/4"	5-1/2"

INSTALLATION FASTENER QTY																
Fan Model	Curb to Fan (Roof)		Curb to Fan (Wall)		Wood (Roof)		Wood (Wall)		Steel (Roof)		Steel (Wall)		Concrete (Roof)		Concrete (Wall)	
	Per Side	Total	Per Side	Total	Per Side	Total	Per Side	Total	Per Side	Total	Per Side	Total	Per Side	Total	Per Side	Total
HCAS	3	12	3	12	3	24	3	24	0	24	4	24	3	24	3	24



**DESIGN PRESSURE: +300 / -300 PSF  
LARGE MISSILE IMPACT RESISTANT**

INSTALLATION FASTENER TYPES				
	Fan To Curb	Wood (SG = 0.42 Min.)	Steel (12 Gauge Min.)	Concrete (2500 psi Min. Cracked Concrete)
Fastener	5/16" - 18 x 2" Self Drilling Screw (E300 DRILL FLEX OR BETTER)	3/8" Dia. Zinc Plated Lag Bolt	1/4" - 14 Drill-Flex Self Drilling Screw	3/8" Dia. SS HBB Kwik Bolt T2 Expansion Anchor
Minimum Thread Penetration	N/A	2-1/2"	12 Gauge	2"
Minimum Edge Distance	N/A	1-1/2"	3/8"	3"
Minimum End Distance	N/A	2-5/8"	3/8"	3"
Minimum Spacing	N/A	1-1/2"	3/4"	5-1/2"

INSTALLATION FASTENER QTY																
Fan Model	Curb to Fan (Roof)		Curb to Fan (Wall)		Wood (Roof)		Wood (Wall)		Steel (Roof)		Steel (Wall)		Concrete (Roof)		Concrete (Wall)	
	Per Side	Total	Per Side	Total	Per Side	Total	Per Side	Total	Per Side	Total	Per Side	Total	Per Side	Total	Per Side	Total
HCAS	3	12	3	12	3	24	3	24	0	24	4	24	3	24	3	24

**REVISIONS**

NO.	DATE	DESCRIPTION

**CAPTIVEAIR.COM**

Southern California Office  
3002 Dow Ave., Suite 410, Tustin, CA 92780 PHONE: (714) 957-1500 FAX: (919) 227-5975 EMAIL: reggie@captiveaire.com

**ISSUE DATE:**

1st	ISSUE FOR BUILDING PERMIT	08-16-18
2nd	ISSUE FOR BID	11-29-18

**DRAWN BY:** RR

PANDA PROJECT # S8-19-D6558  
ARCH PROJECT # 1804

Project No. FE1804

**Kurzynske & Associates**  
CONSULTING ENGINEERS  
2900 Lebanon Pike Suite 201  
Moehville, Tennessee 37214

Panda Express - Gulf Breeze FL (S8-19-16558)  
GULF BREEZE, FL, 32561

DATE: 8/15/2018  
DWG NO.: 3513979  
DRAWN BY: AHJ-86  
SCALE: 3/4" = 1'-0"  
MASTER DRAWING

SHEET NO. 4

**NOTE: UNLESS OTHERWISE STATED, PANDA RESTAURANT GROUP SHALL PROVIDE ALL EQUIPMENT ON THE FOLLOWING CAPTIVEAIR SHEETS, INCLUDING HOODS, FIRE SYSTEM, EXHAUST FANS, SUPPLY FAN, BATHROOM FAN AND ELECTRICAL INTERLOCK PACKAGE.**

**ANSUL GAS VALVE:**  
THE ANSUL GAS VALVE IS PROVIDED BY CAPTIVEAIR SYSTEMS. CONTACT OUR OFFICE WITH THE VALVE SIZE 3 DAYS IN ADVANCE OF WHEN IT IS NEEDED ON SITE.

FOR QUESTIONS CALL THE SOUTHERN CALIFORNIA OFFICE  
STONE HILL DESIGN CENTER  
2915 RED HILL AVE. SUITE C06  
COSTA MESA, CA 92626  
TEL: 800-967-7701 EMAIL: REGGIE@CAPTIVEAIR.COM



PANDA EXPRESS, INC.  
1683 Walnut Grove Ave.  
Rosemead, California 91770  
Telephone: 626.799.9898  
Facsimile: 626.372.8288

All ideas, designs, arrangement and plans indicated or represented by this drawing are the property of Panda Express Inc. and were created for use on this specific project. None of these ideas, designs, arrangements or plans may be used by or disclosed to any person, firm, or corporation without the written permission of Panda Express Inc.

**REVISIONS:**

NO.	DATE	DESCRIPTION

**ISSUE DATE:**

1st	ISSUE FOR BUILDING PERMIT	08-16-18
2nd	ISSUE FOR BID	11-29-18

**DRAWN BY:** RR

PANDA PROJECT # S8-19-D6558  
ARCH PROJECT # 1804

Project No. FE1804

**Kurzynske & Associates**  
CONSULTING ENGINEERS  
2900 Lebanon Pike Suite 201  
Moehville, Tennessee 37214

Panda Express - Gulf Breeze FL (S8-19-16558)  
GULF BREEZE, FL, 32561

DATE: 8/15/2018  
DWG NO.: 3513979  
DRAWN BY: AHJ-86  
SCALE: 3/4" = 1'-0"  
MASTER DRAWING

SHEET NO. 4

HOOD DETAIL PLAN

M-403