



PANDA EXPRESS, INC.
1683 Walnut Grove Ave.
Rosemead, California
91770
Telephone: 626.799.9898
Facsimile: 626.372.8288

All ideas, designs, arrangement and plans indicated or represented by this drawing are the property of Panda Express Inc. and were created for use on this specific project. None of these ideas, designs, arrangements or plans may be used by or disclosed to any person, firm, or corporation without the written permission of Panda Express Inc.

REVISIONS:

ISSUE DATE:

1st	ISSUE FOR BUILDING PERMIT	08-16-18
2nd	ISSUE FOR BID	11-29-18

DRAWN BY: RR
PANDA PROJECT # S8-19-D6558
ARCH PROJECT # 1804

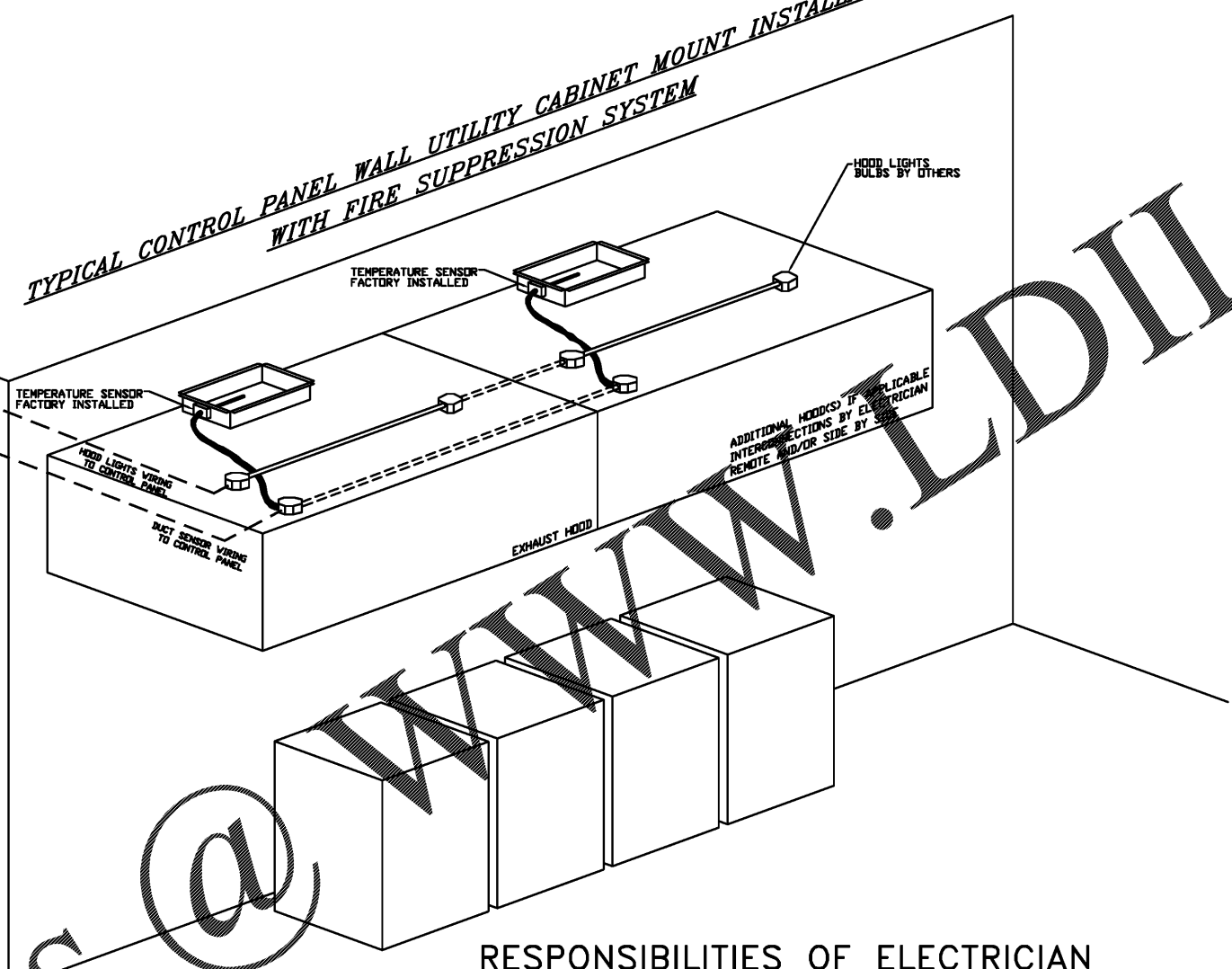
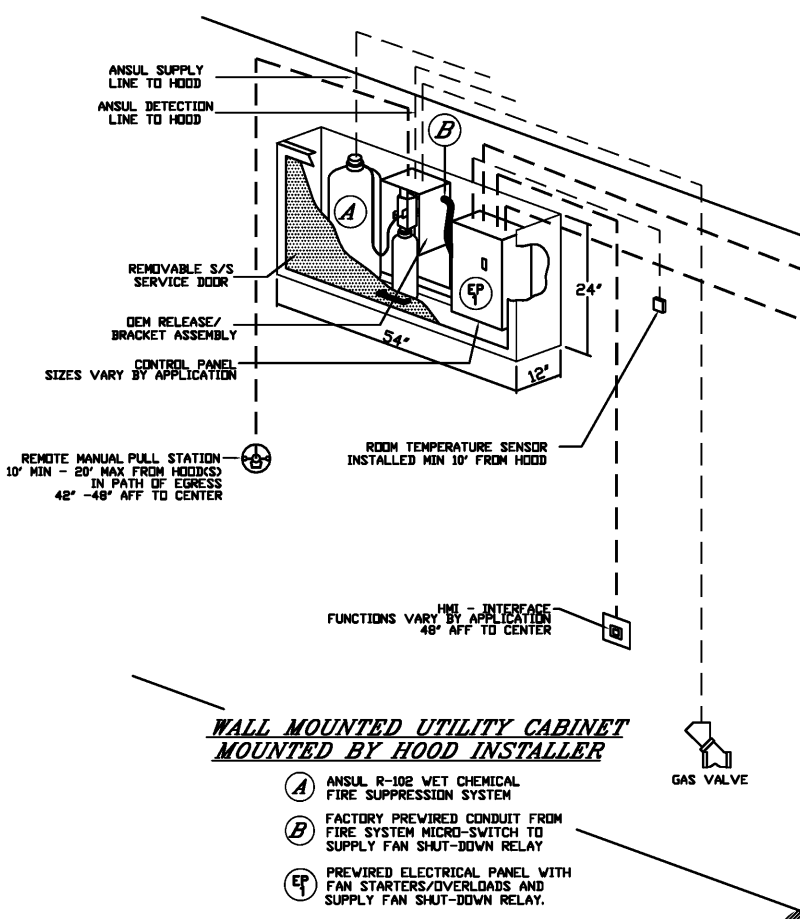


PANDA EXPRESS
US 98 and PORTSIDE DRIVE
3868 GULF BREEZE PARKWAY
GULF BREEZE, FL
2200 TRUE - R1 - DAB 12

M-401
HOOD DETAIL PLAN

REVISIONS
DATE: 8/15/2018
DWG. NO.: 3513979
DRAWN BY: AHJ-86
SCALE: 3/4" = 1'-0"
MASTER DRAWING
SHEET NO. 2

TYPICAL CONTROL PANEL WALL UTILITY CABINET MOUNT INSTALLATION WITH FIRE SUPPRESSION SYSTEM



RESPONSIBILITIES OF ELECTRICIAN

1. WIRE 120V FROM MAIN PANEL TO CONTROL PANEL
2. WIRE LIGHT FIXTURES BETWEEN HOOD(S) & BACK TO CONTROL PANEL
3. WIRE TEMPERATURE SENSOR(S) FROM EXHAUST COLLARS TO CONTROL PANEL
4. MOUNT & WIRE ROOM SENSOR TO CONTROL PANEL
5. WIRE FAN POWER FROM MAIN PANEL THROUGH CONTROL PANEL TO FAN(S)
6. WIRE SHUNT COIL TO CONTROL PANEL
7. WIRE GAS VALVE (IF APPLICABLE) TO CONTROL PANEL (120V FROM CONTROL PANEL)

ADDITIONAL RESPONSIBILITIES IF APPLICABLE

1. IF MULTIPLE FIRE SYSTEMS ON SINGLE CONTROL PANEL, THE FOLLOWING MUST OCCUR
 - A. ANSUL AUTOMAN MICROSWITCHES TO BE WIRED IN SERIES BACK TO CONTROL PANEL
 - B. ANSUL CATRIDGE MICROSWITCHES TO BE WIRED IN SERIES BACK TO CONTROL PANEL

RESPONSIBILITIES OF ALARM CONTRACTOR

1. WIRE ANSUL ALARM MICROSWITCH TO BUILDING ALARM PANEL

TERMINAL BLOCK WIRING DETAILS CAN BE FOUND ON ELECTRICAL WIRING DIAGRAMS

Order Plans @ WWW.LDILine.com

www.LDILine.com
Southern California Office
3002 Dow Ave., Suite 410, Tustin, CA 92780 PHONE: (714) 957-1500 FAX: (919) 227-5975 EMAIL: reggie@captivate.com