

NOTED DIMENSIONS  
 a = 4'-0"  
 havg = 17'-0"

LOCATION	ZONE	EFFECTIVE WIND AREA (SF)	DESIGN WIND PRESSURE
ROOF	1	10	+19/-46
		25	+17/-45
		50	+16/-43
		100	+16/-42
	2	10	+42/-77
		25	+40/-66
		50	+38/-58
		100	+36/-50
	3	10	+42/-77
		25	+40/-66
		50	+38/-58
		100	+36/-50
WALLS	4	10	+42/-46
		25	+38/-41
		50	+34/-38
		100	+32/-35
	5	10	+42/-56
		25	+38/-48
		50	+34/-40
		100	+32/-35

- NOTES:
- PRESSURES NOTED ARE CALCULATED PER ASCE 7-10.
  - WIND PRESSURES SHOWN ARE ULTIMATE LOADS.
    - + DENOTES PRESSURE ACTING TOWARDS SURFACE
    - DENOTES PRESSURE ACTING AWAY FROM SURFACE
  - USE THE FOLLOWING DEAD LOADS WHEN APPLYING CODE SPECIFIED LOAD COMBINATIONS:
    - FOR ROOF TRUSS DESIGN : 3 PSF DL + TRUSS WEIGHT

BASIC WIND SPEED: 155 MPH EXPOSURE CATEGORY: C

COMPONENTS & CLADDING DESIGN WIND PRESSURES

Scale: None S-100

PLAN NOTES

- REF. SHEET S-000 FOR STRUCTURAL NOTES AND SPECIAL INSPECTIONS.
- REF. 3/S-201 FOR TYPICAL PIPE AND TRENCH DETAIL AS REQUIRED.
- REF. 4/S-201 FOR TYPICAL SILL PLATE BOLT DETAIL AS REQUIRED.
- REF. 5/S-201 FOR TYPICAL STEP FOOTING DETAIL AS REQUIRED.
- REF. 6/S-201 FOR TYPICAL GRADE BEAM STIRRUP DETAIL AS REQUIRED.
- REF. 7/S-201 FOR TYPICAL REINFORCING BAR DETAIL AS REQUIRED.
- REF. 8/S-201 FOR TYPICAL CORNER BAR DETAIL AS REQUIRED.
- REF. 9/S-201 FOR TYPICAL NON BEARING WALL CONNECTION AT SLAB AS REQUIRED.
- REF. 3/S-301 FOR TYPICAL FRAMING NOTCHES DETAIL AS REQUIRED.
- REF. 4/S-301 FOR TYPICAL WALL FRAMING DETAILS AS REQUIRED.
- REF. 11/S-200 FOR TYPICAL TRASH ENCLOSURE DETAIL AS REQUIRED.
- REF. 9/S-201 FOR TYPICAL CURB DETAIL AS REQUIRED.
- REF. 15/S-200 FOR TYPICAL LIGHT POLE BASE DETAIL AS REQUIRED.
- REF. 12/S-200 AND 11/S-201 FOR TYPICAL UMBRELLA FOOTING AS REQUIRED.
- REF. 10/S-201 FOR TYPICAL TRENCH DRAIN DETAIL AS REQUIRED.
- REF. 11/S-201 FOR TYPICAL DRAIN DETAIL AS REQUIRED.
- COORDINATE WITH ARCHITECTURAL, MECHANICAL AND PLUMBING DRAWINGS FOR LOCATIONS OF ALL DEPRESSIONS, CURBS, DRAINS, ETC. IN FLOOR SLAB.

SHEARWALL SCHEDULE

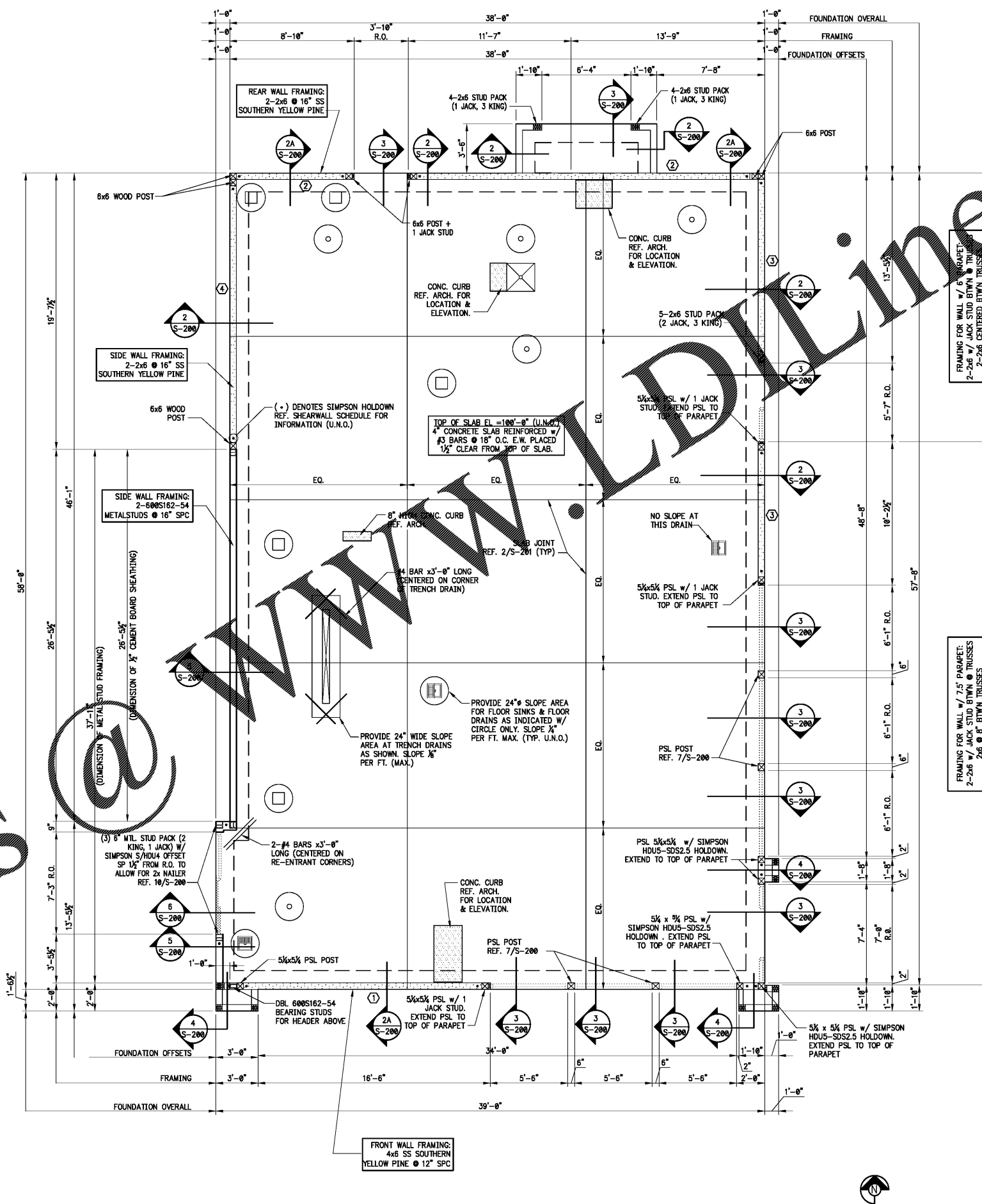
TYPE	NAIL SPACING	HOLD DOWN	SILL ANCHORS	REMARKS
(1)	10d @ 2' O.C.	HDU11-S2.5	3/4" @ 32" O.C.	SEE NOTES 9,10
(2)	10d @ 4' O.C.	HDU11-S2.5	3/4" @ 32" O.C.	
(3)	10d @ 4' O.C.	HDU11-S2.5	3/4" @ 32" O.C.	
(4)	10d @ 4' O.C.	HDU11-S2.5	3/4" @ 32" O.C.	

(X) - DESIGNATES SHEARWALL TYPE

- USE 10d COMMON NAILS.
- USE 1/2" MIN. SPACING ALONG BOUNDARY AND JOINTS NOTED IN SCHEDULE. NAIL PANEL FACES @ O.C. AT ALL INTERMEDIATE STUDS.
- USE 1/2" PLYWOOD FOR ALL WALL SHEATHING.
- PROVIDE HORIZONTAL BLOCKING ALONG ALL HORIZONTAL JOINTS.
- USE 1/2" PLYWOOD JOINT AND SILL PLATE NAILING.
- FRAMING MEMBERS OR BLOCKING SHALL BE PROVIDED AT THE EDGES OF ALL SHEETS IN SHEARWALLS.
- REFER TO 9/S-200 FOR HOLD DOWN ANCHOR EMBEDMENT.
- HOLD DOWN ANCHORS MUST BE TIED IN PLACE PRIOR TO FOUNDATION INSPECTION.
- WALL STUDS FOR SHEAR WALL 1 ARE 4x6 @ 12" SPC.
- STAGGER NAILS 1" ALONG EACH SIDE OF SHEATHING JOINTS.

FOUNDATION NOTES

Scale: None S-100



FRONT WALL FRAMING:  
 4x6 SS SOUTHERN  
 YELLOW PINE @ 12" SPC



PANDA EXPRESS, INC.  
 1683 Walnut Grove Ave.  
 Rosemead, California  
 91770  
 Telephone: 626.799.9898  
 Facsimile: 626.372.8288

All ideas, designs, arrangement and plans indicated or represented by this drawing are the property of Panda Express Inc. and were created for use on this specific project. None of these ideas, designs, arrangements or plans may be used by or disclosed to any person, firm, or corporation without the written permission of Panda Express Inc.

REVISIONS:

NO.	DESCRIPTION	DATE

ISSUE DATE:

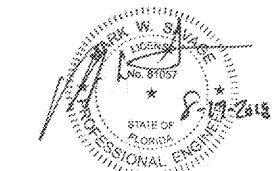
NO.	DESCRIPTION	DATE
1st	ISSUE FOR BUILDING PERMIT	08-16-18
2nd	ISSUE FOR BID	11-29-18

DRAWN BY: EMC

PANDA PROJECT #: S8-19-D6558  
 ARCH PROJECT #: 1804

**EMC**  
 STRUCTURAL ENGINEERS, P.C.  
 4525 Trousdale Drive  
 Nashville, Tennessee 37204  
 (615) 781-8199  
 (615) 781-4088 (fax)

EMC Project No. 18254



PANDA EXPRESS  
 US 98 and PORTSIDE DRIVE  
 3868 GULF BREEZE PARKWAY  
 GULF BREEZE, FL

2200 TRUE - R1 - DAB 12

S-100

FOUNDATION PLAN

FOUNDATION PLAN

Scale: 1/4"=1'-0" S-100