



PANDA EXPRESS, INC.
 1683 Walnut Grove Ave.
 Rosemead, California
 91770
 Telephone: 626.799.9898
 Facsimile: 626.372.8288

All ideas, designs, arrangement and plans indicated or represented by this drawing are the property of Panda Express Inc. and were created for use on this specific project. None of these ideas, designs, arrangements or plans may be used by or disclosed to any person, firm, or corporation without the written permission of Panda Express Inc.

REVISIONS:

NO.	DESCRIPTION	DATE

ISSUE DATE:

1st	ISSUE FOR BUILDING PERMIT	08-16-18
2nd	ISSUE FOR BID	11-29-18

DRAWN BY: RR

PANDA PROJECT # S8-19-D6558
 ARCH PROJECT # 1804



315 WALTER ROBERTS ST • FRANKLIN, TN 37064
 PHONE (615) 496-8250 • FAX (666) 584-1325

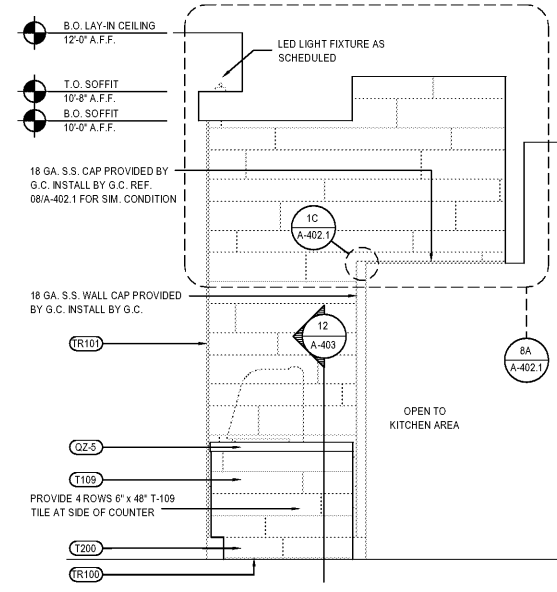
REGISTERED FLORIDA ARCHITECT # AR0015528

PANDA EXPRESS
 US 98 and PORTSIDE DRIVE
 3868 GULF BREEZE PARKWAY
 GULF BREEZE, FL

2200 TRUE - R1 - DAB 12

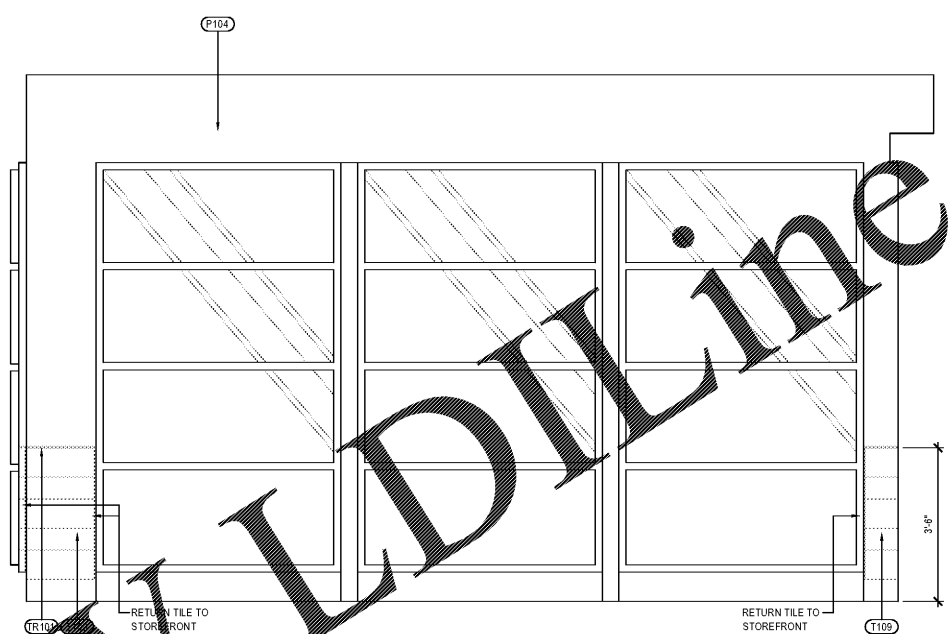
A-501

INTERIOR ELEVATIONS

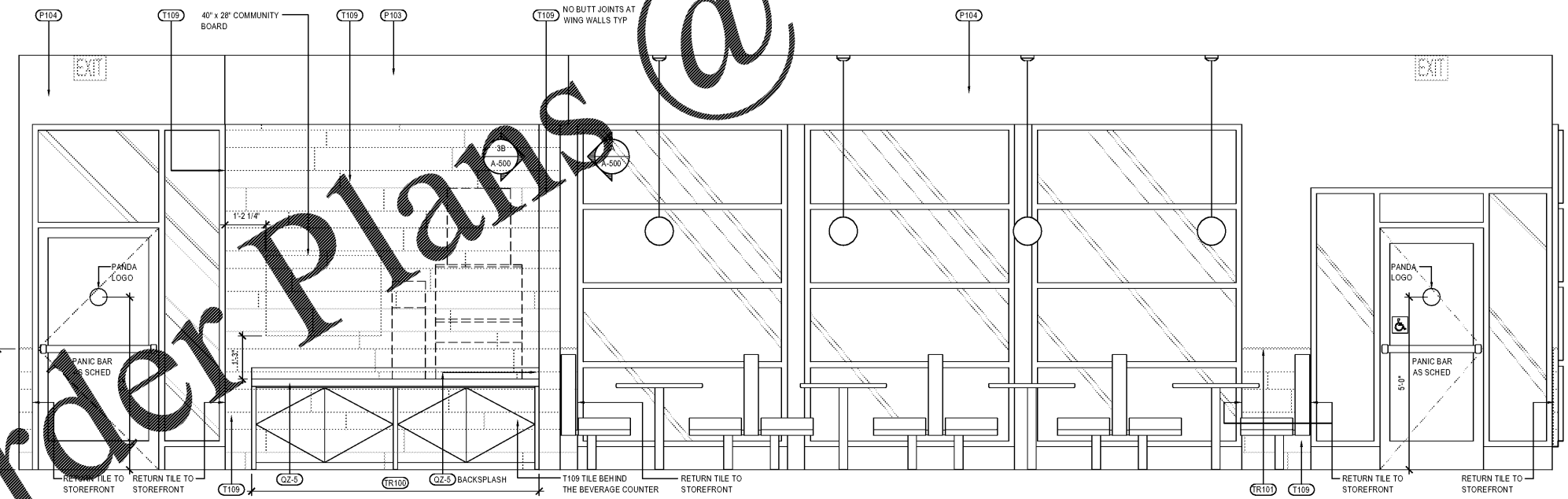


NOT USED 4
 Scale= 1/2" = 1'-0" A-501

SERVICE COUNTER ELEVATION 3
 Scale= 1/2" = 1'-0" A-501



DINING ROOM ELEVATION 2
 Scale= 1/2" = 1'-0" A-501



BOT. OF LAY-IN CEILING
 12'-0" A.F.F.
 TOP OF GLAZING
 10'-0" A.F.F.

DINING ROOM ELEVATION 1
 Scale= 1/2" = 1'-0" A-501

Order Plans @