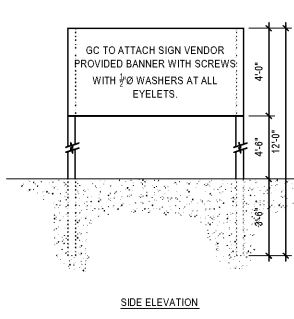
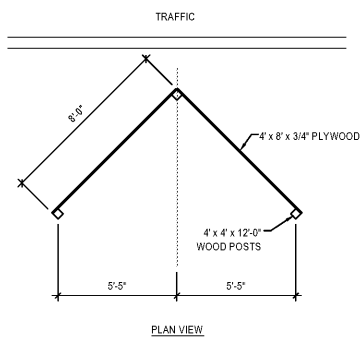
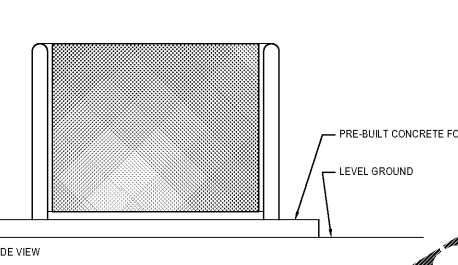
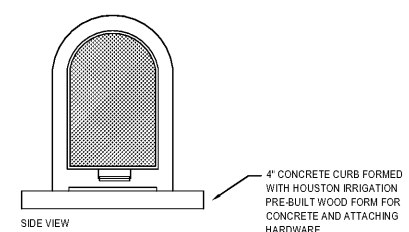
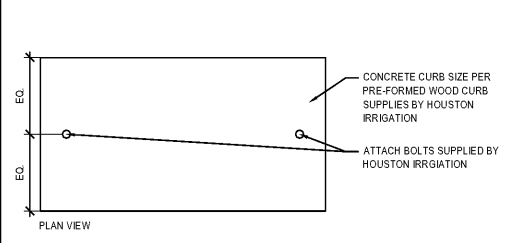


NOTE: GC TO COORDINATE PLACEMENT ONSITE WITH PANDA PROJECT MANAGER.

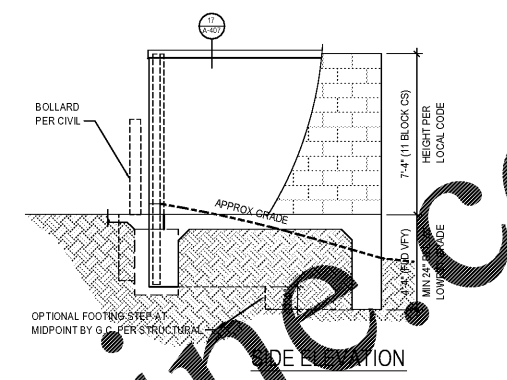
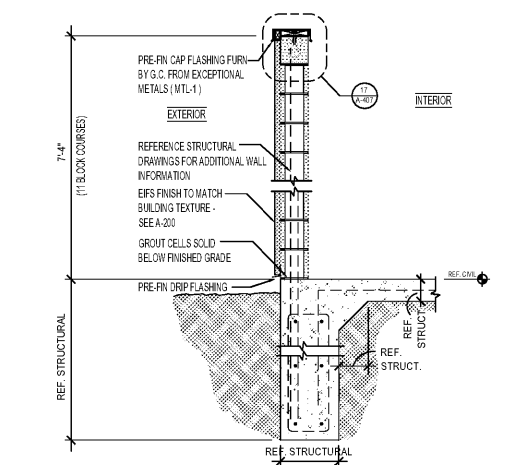


"COMING SOON" SIGN DETAIL 16
Scale= 1/4" = 1'-0" A-407

PROVIDE & INSTALL CAGE AND COVER FOR THE BACK-FLOW PREVENTER AT 4" CONCRETE CURB IN LANDSCAPE AREA- GORILLA CAGE, MANUFACTURED BY HOUSTON IRRIGATION SERVICES SPRING, TEXAS (281-705-9701). PROVIDE INSULATED COVER, AQUA SHIELD MODEL #BFP1-S FOR COLDER REGIONS OF US. COORDINATE WITH PANDA PM.

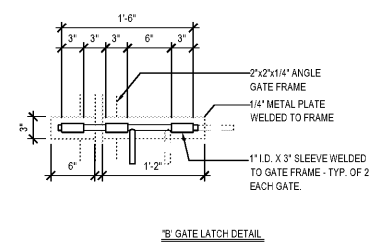
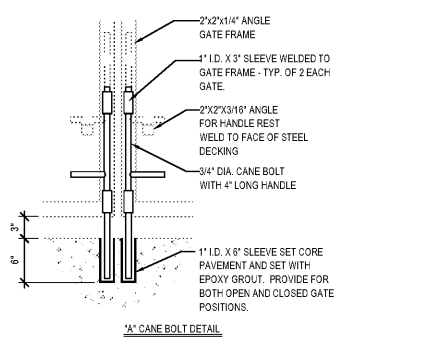


BACKFLOW PROTECTION CAGE 11
Scale= NTS A-407

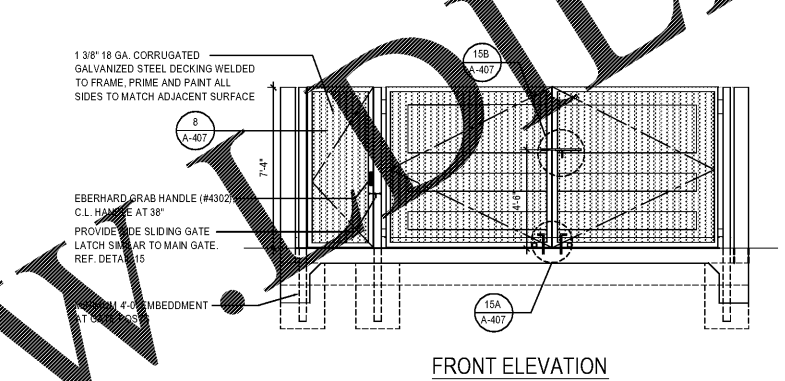


TRASH ENCLOSURE WALL SECTION 8
Scale= 1/2" = 1'-0" A-407

SIDE ELEVATION 4
Scale= 1/4" = 1'-0" A-407



DUMPSTER GATE LATCH DETAILS 15
Scale= NTS A-407



NOTE: THE TRASH ENCLOSURE EXTERIOR CMU WALLS TO HAVE EIFS FINISH TO MATCH BUILDING TEXTURE - SEE: A-200. (ALT IF APPROVED BY PANDA P.M. IS 3-COAT STUCCO - VFY PRIOR TO BID)

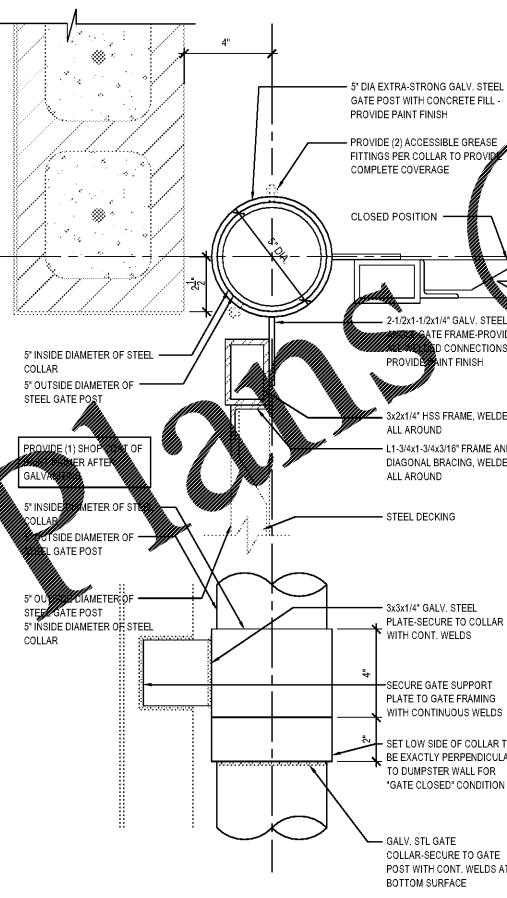
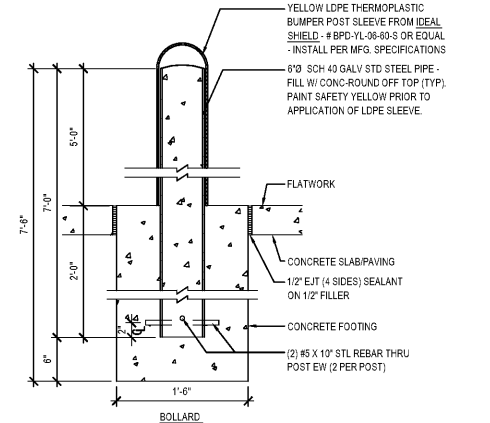
TRASH ENCLOSURE WALLS AND GATE COLOR SHALL MATCH EIFS

INTERIOR WALLS SHALL BE SMOOTH, CLEANABLE AND SEALED WITH AN APPROVED EPOXY CEMENT SEALER. COLOR TO MATCH EXTERIOR.

NOTE: CONTRACTOR TO SUPPLY & INSTALL ALL HINGES, GATE LATCHES, CANE BOLTS, ETC. AS INDICATED.

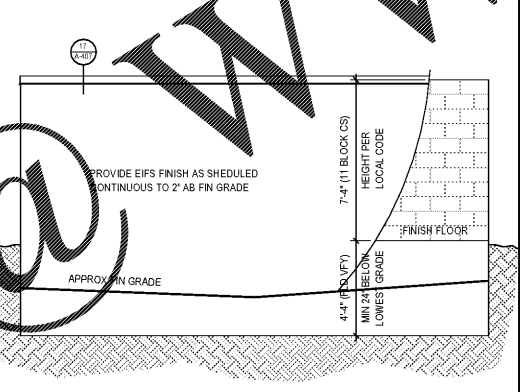
NOTE: ANY DIAGONAL SUPPORT FOR GATES SHALL BE INSTALLED ON THE INSIDE OF ENCLOSURE. THIS SHALL NOT BE VISIBLE ON THE OUTSIDE OF THE GATE.

FRONT ELEVATION 2
Scale= 1/4" = 1'-0" A-407

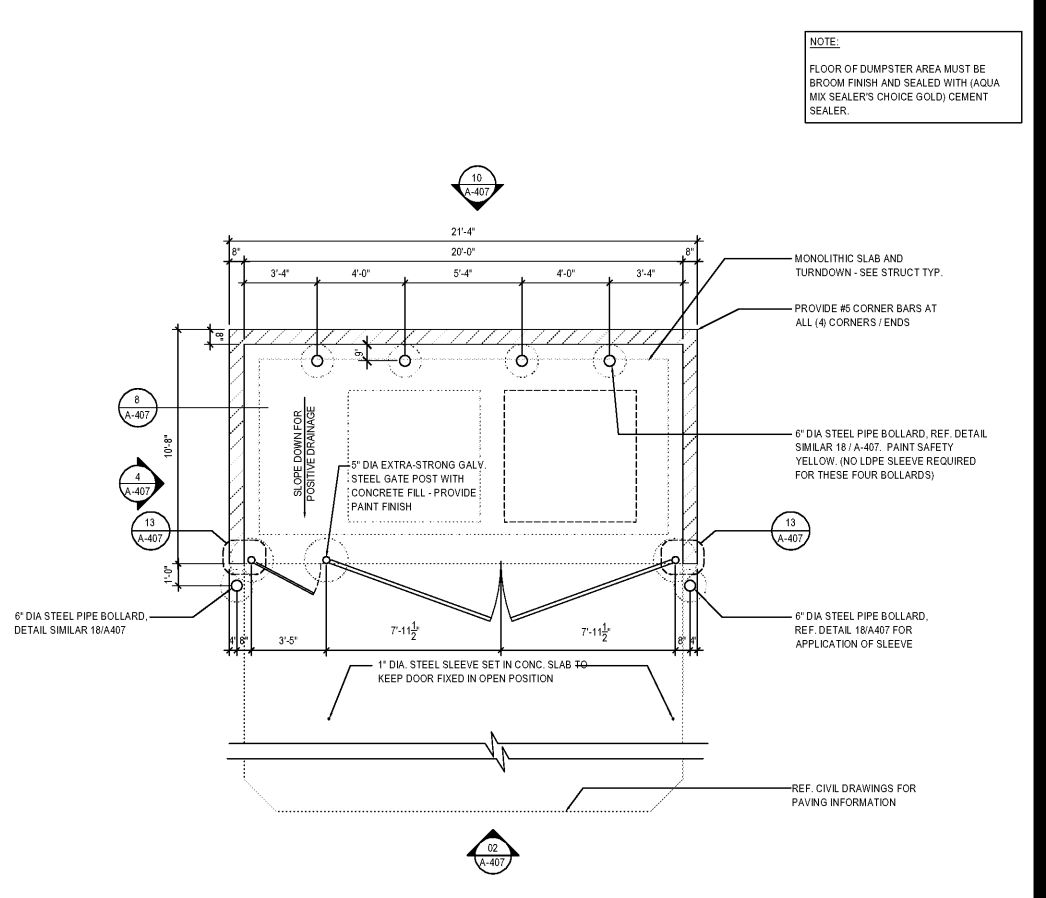


BOLLARD / POST BASE 18
Scale= 1" = 1'-0" A-407

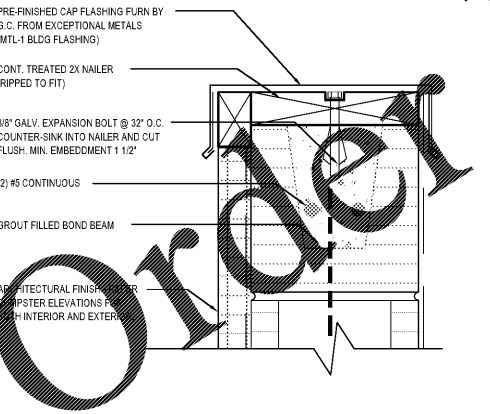
HINGE DETAIL 13
Scale= 3" = 1'-0" A-407



REAR ELEVATION 10
Scale= 1/4" = 1'-0" A-407



TRASH ENCLOSURE 1
Scale= 1/4" = 1'-0" A-407



DUMPSTER CAP DETAIL 17
Scale= 3" = 1'-0" A-407

NOT USED 9
Scale= A-407



PANDA EXPRESS, INC.
1683 Walnut Grove Ave.
Rosemead, California
91770
Telephone: 626.799.9898
Facsimile: 626.372.8288

All ideas, designs, arrangement and plans indicated or represented by this drawing are the property of Panda Express Inc. and were created for use on this specific project. None of these ideas, designs, arrangements or plans may be used by or disclosed to any person, firm, or corporation without the written permission of Panda Express Inc.

REVISIONS:

NO.	JURISDICTIONAL COMMENTS	DATE
1		11-29-18

ISSUE DATE:

1st	ISSUE FOR BUILDING PERMIT	08-16-18
2nd	ISSUE FOR BID	11-29-18

DRAWN BY: RR

PANDA PROJECT # S8-19-D6558
ARCH PROJECT # 1804



315 WALTER ROBERTS ST • FRANKLIN, TN 37064
PHONE (615) 496-4250 • FAX (666) 584-1325
REGISTERED FLORIDA ARCHITECT # AR0015528

PANDA EXPRESS
US 98 and PORTSIDE DRIVE
3868 GULF BREEZE PARKWAY
GULF BREEZE, FL

2200 TRUE - R1 - DAB 12

A-407

TRASH ENCLOSURE DETAILS