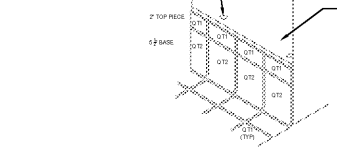


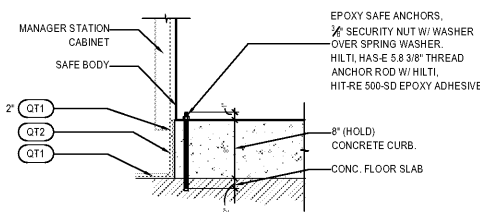
MANAGER CABINET STATION CURB SIZE REFER FLR. PLAN FOR LOCATION

8" H X 24" W (CONCRETE CURB ONLY, NOT INCLUDE TILE BASE); INSTALL TILE TO EXPOSED FACE

DRILL 1/2" HOLES THRU CURB INTO FLOOR SLAB. REFER SECTION DETAIL BELOW. HOLE LOCATIONS VARY DEPENDING ON SAFE MODEL. CHECK PANDA PM FOR SAFE MODEL.

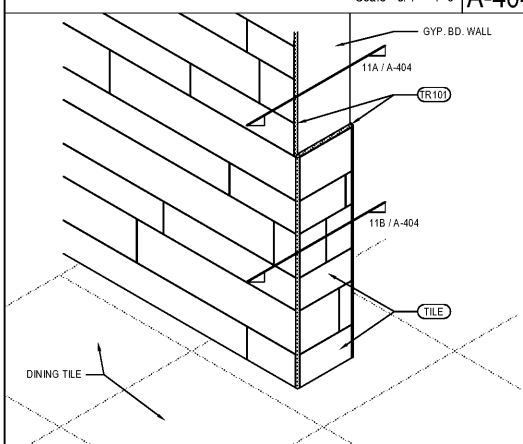


MANAGER STATION CABINET ENCLOSED BY 3 SIDE OF WALLS. TILE ONLY FRONT FACE OF CURB; NO TILE ON TOP OF CURB



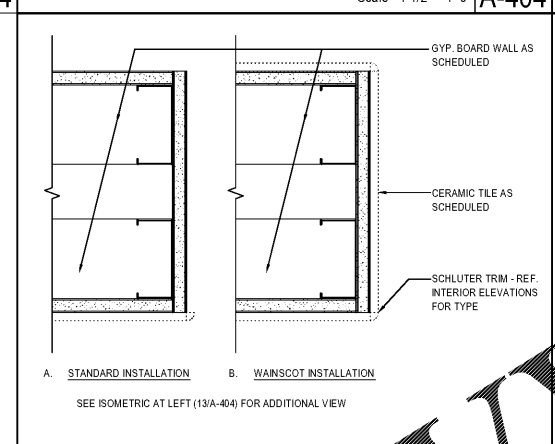
MGR. STATION & SAFE CURB 20  
Scale= 1 1/2" = 1'-0" A-404

NOT USED 14  
Scale= 3/4" = 1'-0" A-404



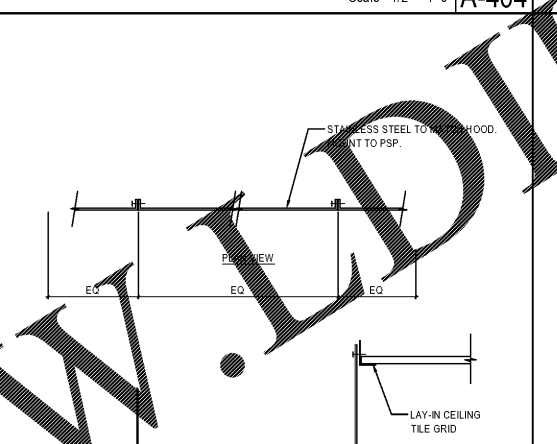
OUTSIDE CORNER ISOMETRIC 13  
Scale= 3/4" = 1'-0" A-404

15" CURB DETAIL (AT MOP SINK) 12  
Scale= 1 1/2" = 1'-0" A-404



PLAN SECTION WALL DETAIL 11  
Scale= 3" = 1'-0" A-404

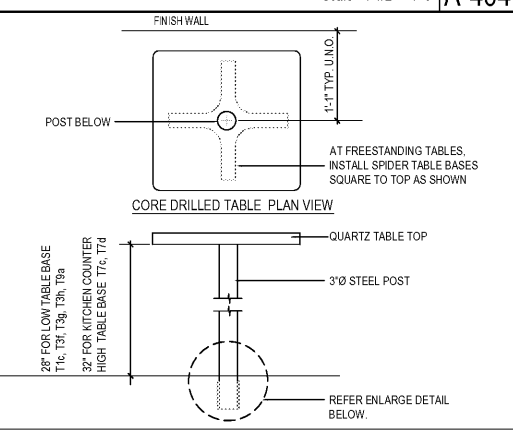
S.S. DETAIL @ COOLER / FREEZER 8  
Scale= 1/2" = 1'-0" A-404



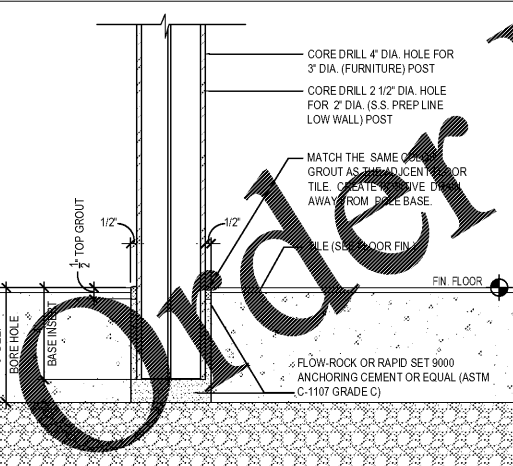
5 1/2" CURB DETAIL (CO2 TANK) 4  
Scale= 1 1/2" = 1'-0" A-404



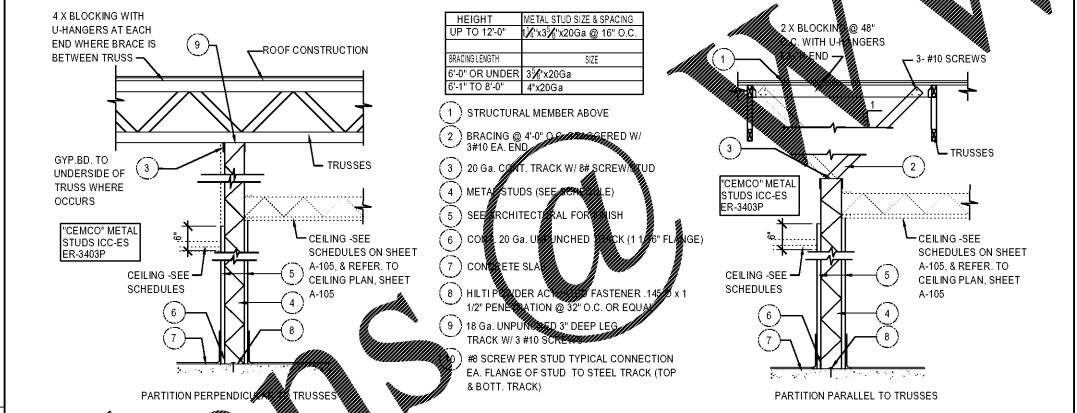
NOT USED 3  
Scale= 1 1/2" = 1'-0" A-404



NOTE:  
G.C. TO REFER CORE DRILL LOCATION ON SHEET A-109

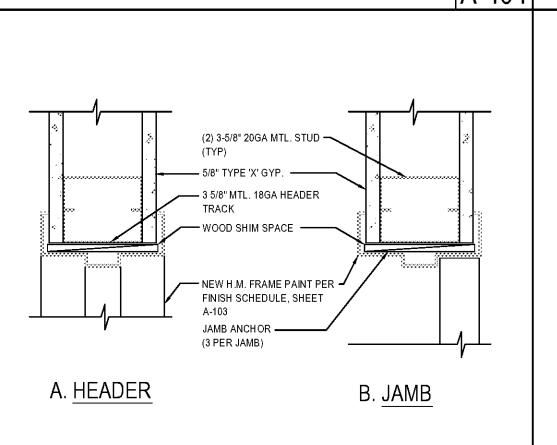


STANDARD CORE DRILL TABLE 17  
NTS A-404



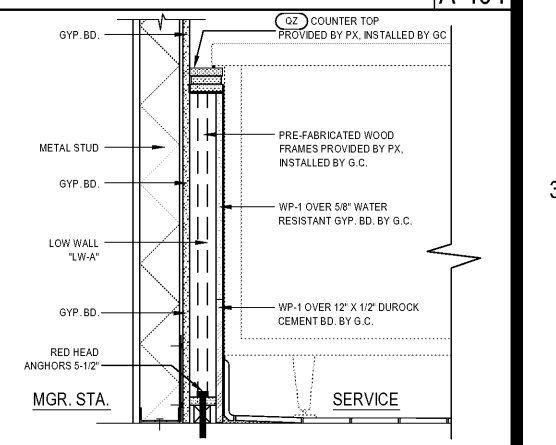
PARTITION DETAILS 10  
Scale= 3/4" = 1'-0" A-404

S.S. DETAIL @ EXHAUST HOOD 6  
Scale= 1/2" = 1'-0" A-404

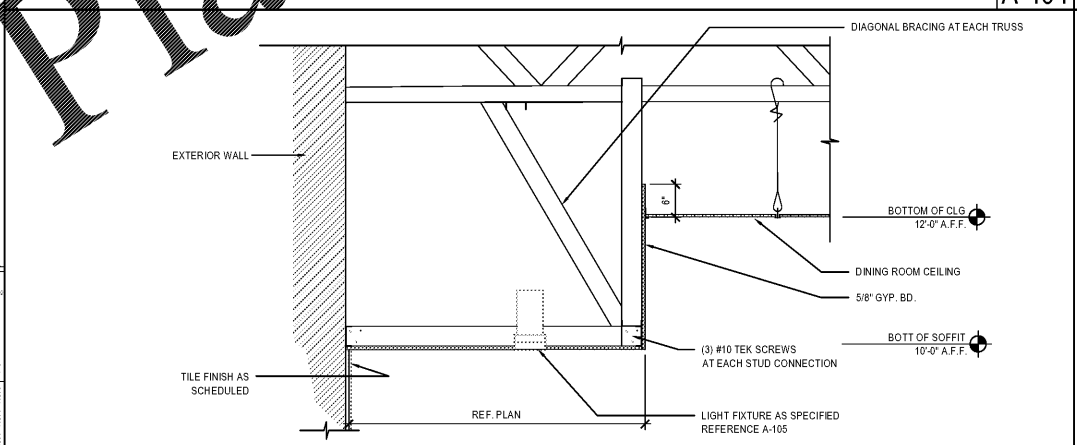


INTERIOR DOOR HEADER/JAMB 5  
Scale= 3" = 1'-0" A-404

NOT USED 2  
Scale= NONE A-404



SERVICE COUNTER END DETAIL 1  
Scale= 1 1/2" = 1'-0" A-404



SOFFIT @ BEVERAGE COUNTER 9  
Scale= 3/4" = 1'-0" A-404



PANDA EXPRESS, INC.  
1683 Walnut Grove Ave.  
Rosemead, California  
91770  
Telephone: 626.799.9898  
Facsimile: 626.372.8288

All ideas, designs, arrangement and plans indicated or represented by this drawing are the property of Panda Express Inc. and were created for use on this specific project. None of these ideas, designs, arrangements or plans may be used by or disclosed to any person, firm, or corporation without the written permission of Panda Express Inc.

REVISIONS:


ISSUE DATE:

1st	ISSUE FOR BUILDING PERMIT	08-16-18
2nd	ISSUE FOR BID	11-29-18

DRAWN BY: RR  
PANDA PROJECT #: S8-19-D6558  
ARCH PROJECT #: 1804

**RANDY REYNOLDS**  
ARCHITECT  
315 WALTER ROBERTS ST • FRANKLIN, TN 37064  
PHONE (615) 499-8250 • FAX (666) 584-1325  
REGISTERED FLORIDA ARCHITECT # AR0015528

**PANDA EXPRESS**  
US 98 and PORTSIDE DRIVE  
3868 GULF BREEZE PARKWAY  
GULF BREEZE, FL  
2200 TRUE - R1 - DAB 12

**A-404**

ARCHITECTURAL  
DETAILS