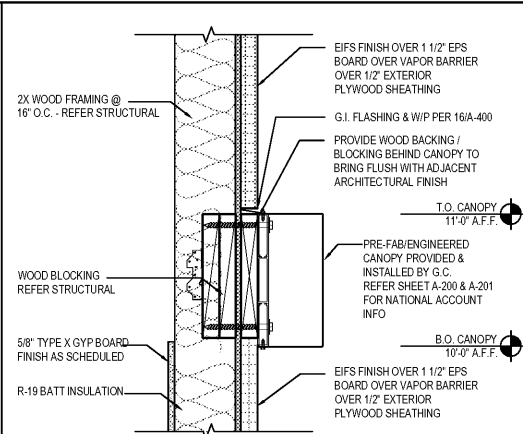
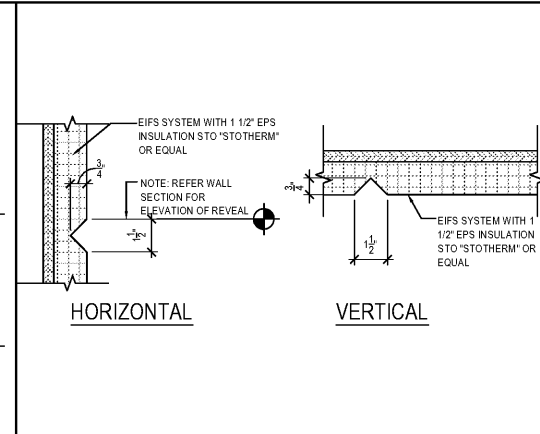


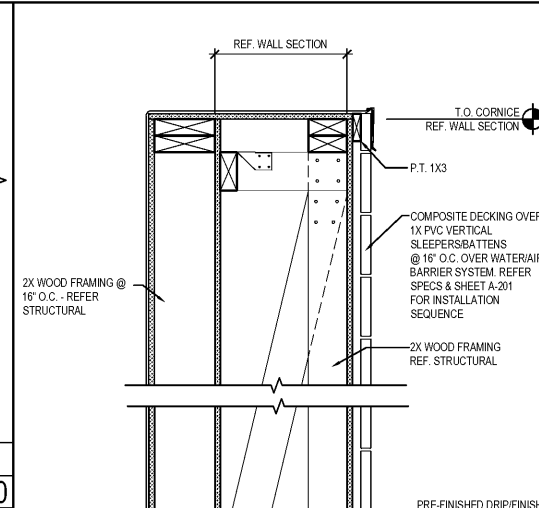
TYPICAL FLASHING AT CANOPIES 16
Scale= 3" = 1'-0" A-400



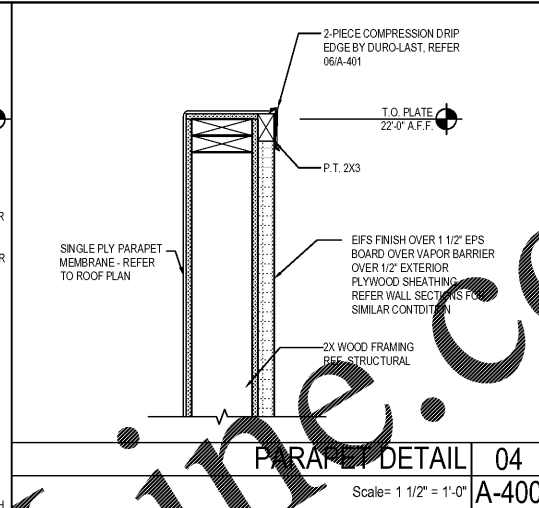
CANOPY DETAIL 13
Scale= 1 1/2" = 1'-0" A-400



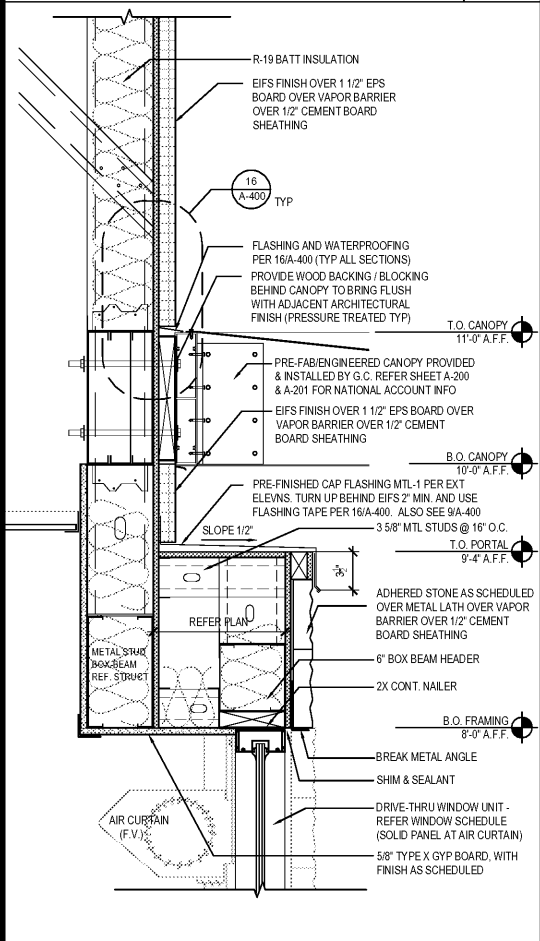
EIFS AESTHETIC REVEAL JOINT 10
Scale= 3" = 1'-0" A-400



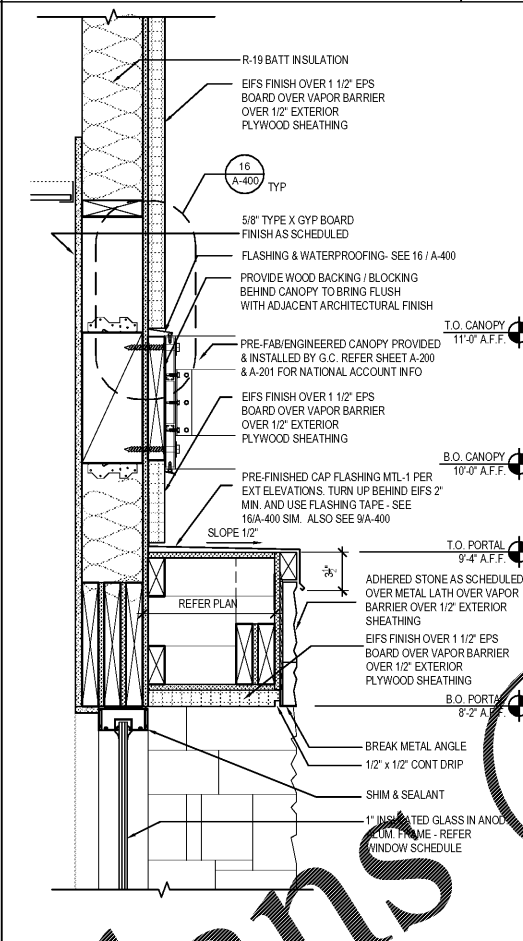
PARAPET/CORNICE DETAIL 07
Scale= 1 1/2" = 1'-0" A-400



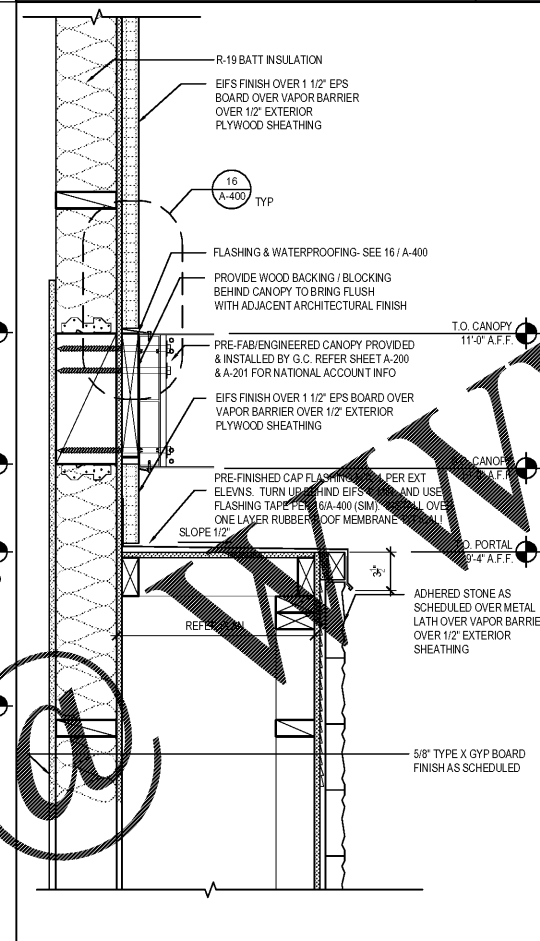
PARAPET DETAIL 04
Scale= 1 1/2" = 1'-0" A-400



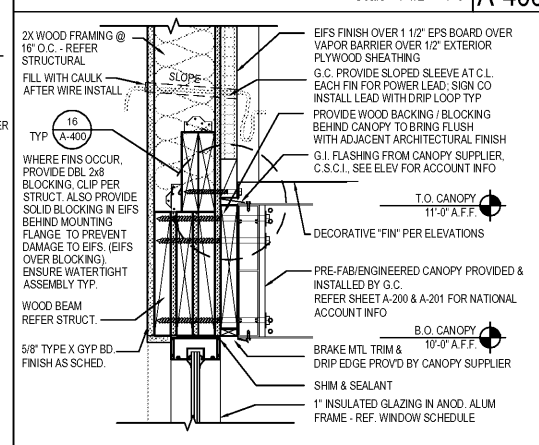
DRIVE-THRU HEAD DETAIL 15
Scale= 1 1/2" = 1'-0" A-400



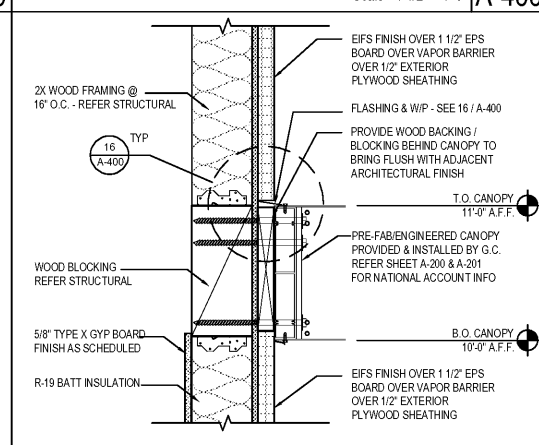
PORTAL DETAIL 12
Scale= 1 1/2" = 1'-0" A-400



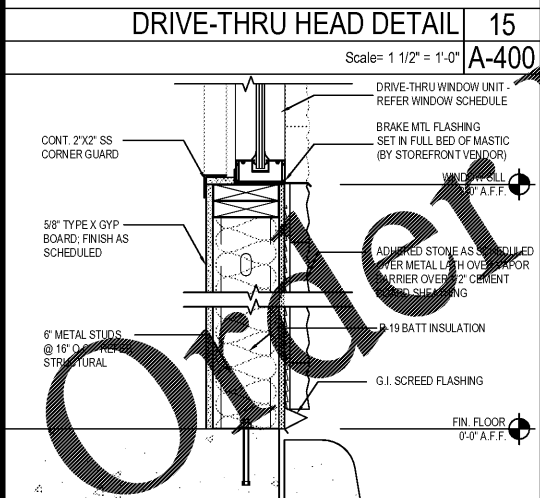
PILASTER DETAIL 09
Scale= 1 1/2" = 1'-0" A-400



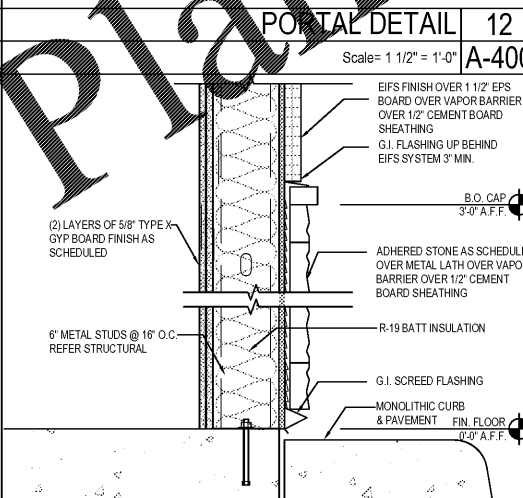
HEAD/CANOPY DETAIL 06
Scale= 1 1/2" = 1'-0" A-400



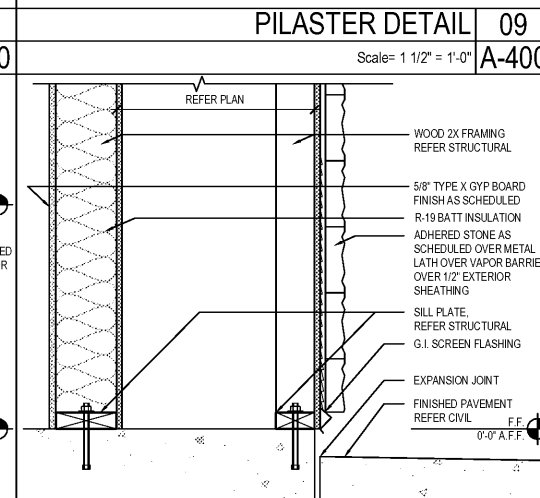
CANOPY DETAIL 02
Scale= 1 1/2" = 1'-0" A-400



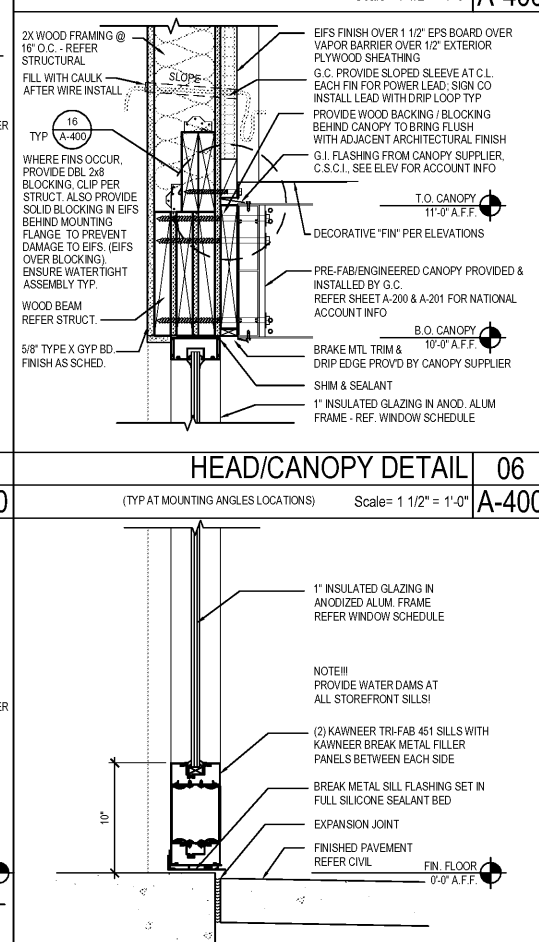
SILL DETAIL 14
Scale= 1 1/2" = 1'-0" A-400



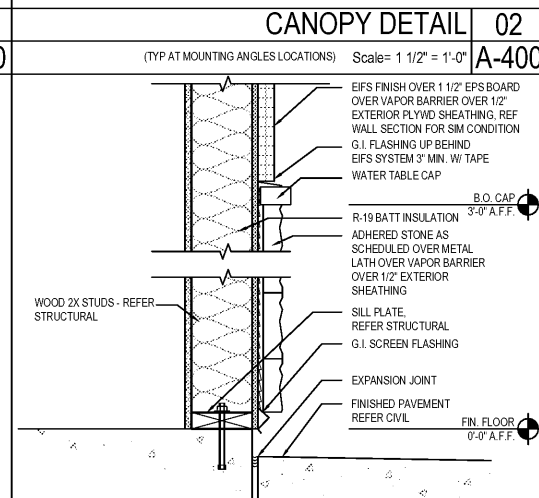
SILL DETAIL 11
Scale= 1 1/2" = 1'-0" A-400



SILL DETAIL 08
Scale= 1 1/2" = 1'-0" A-400



SILL DETAIL 05
Scale= 1 1/2" = 1'-0" A-400



SILL DETAIL 01
Scale= 1 1/2" = 1'-0" A-400

PANDA EXPRESS, INC.
1683 Walnut Grove Ave.
Rosemead, California
91770
Telephone: 626.799.9898
Facsimile: 626.372.8288

All ideas, designs, arrangement and plans indicated or represented by this drawing are the property of Panda Express Inc. and were created for use on this specific project. None of these ideas, designs, arrangements or plans may be used by or disposed to any person, firm, or corporation without the written permission of Panda Express Inc.

REVISIONS:

1st	ISSUE FOR BUILDING PERMIT	08-16-18
2nd	ISSUE FOR BID	11-29-18

ISSUE DATE:

DRAWN BY: RR

PANDA PROJECT # S8-19-D6558
ARCH PROJECT # 1804

RANDY REYNOLDS
ARCHITECT

315 WALTER ROBERTS ST • FRANKLIN, TN 37064
PHONE (615) 496-8750 • FAX (666) 584-1265
REGISTERED FLORIDA ARCHITECT # AR0015526

PANDA EXPRESS
US 98 and PORTSIDE DRIVE
3868 GULF BREEZE PARKWAY
GULF BREEZE, FL
2200 TRUE - R1 - DAB 12

A-400
ARCHITECTURAL
DETAILS