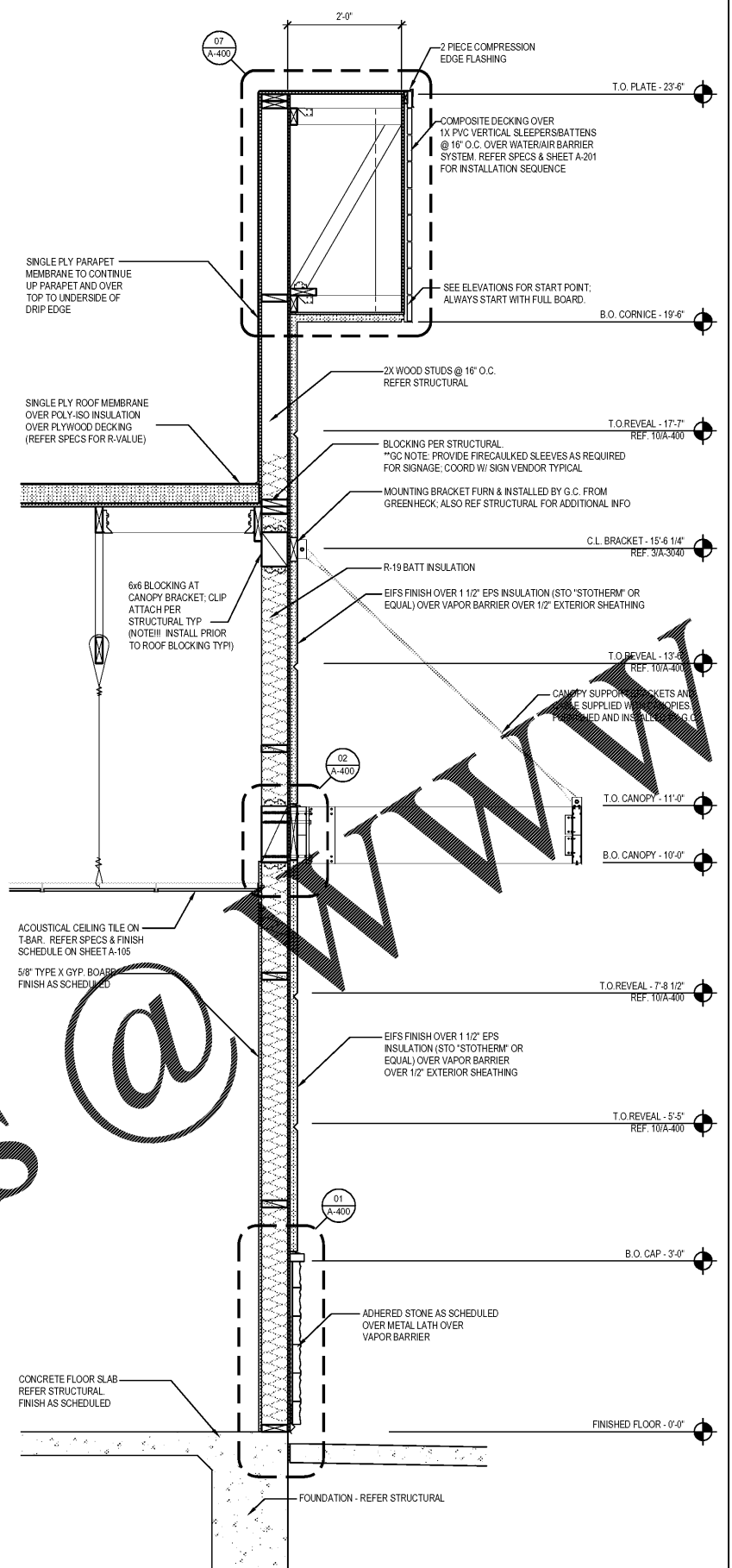


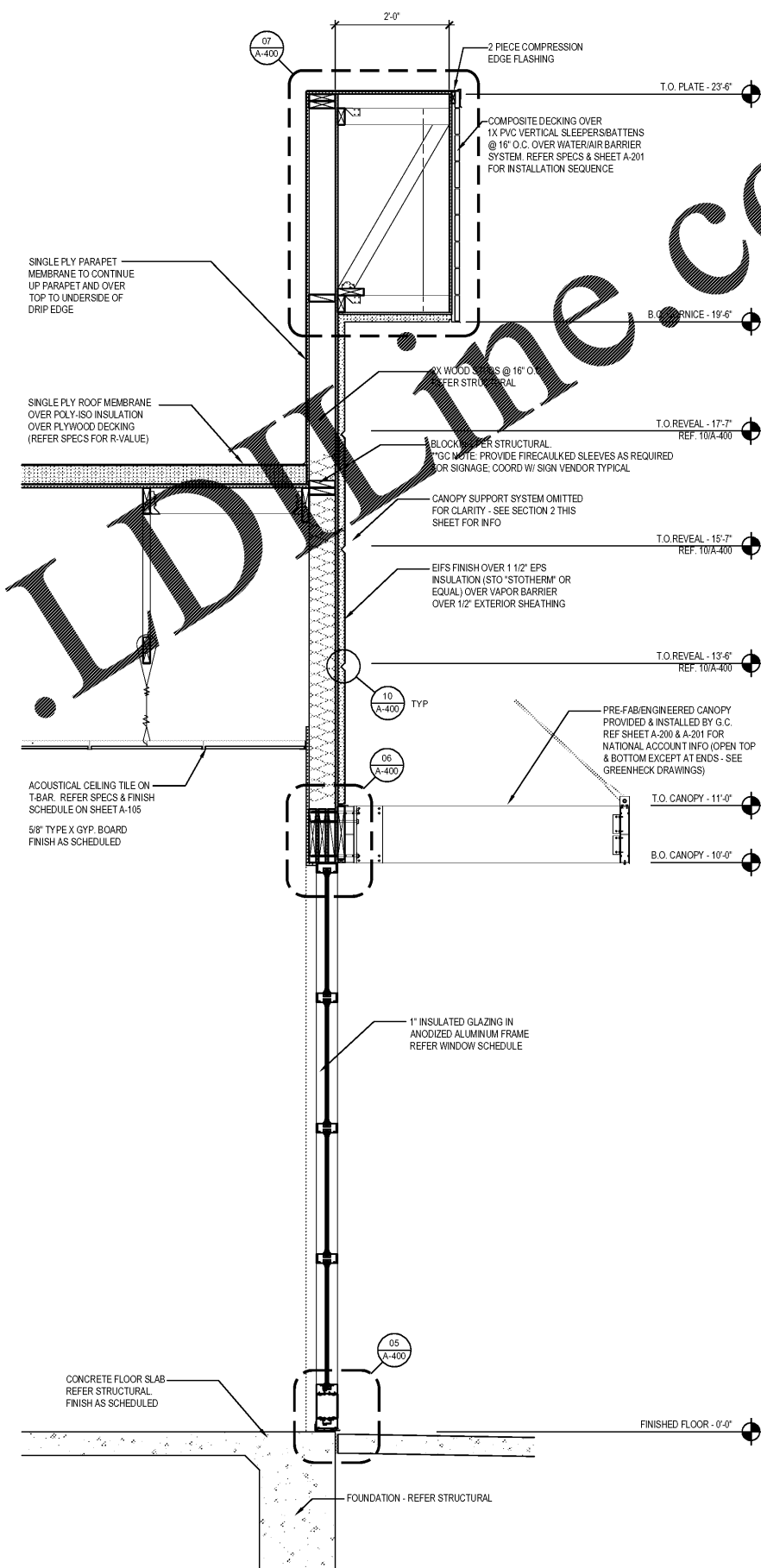
SECTION AT BUMP-OUT AT LEFT FRONT CORNER 1

Scale= 3/4" = 1'-0" A-301



SECTION AT LEFT SIDE OF FRONT WALL 2

Scale= 3/4" = 1'-0" A-301



SECTION AT RIGHT SIDE OF FRONT WALL 3

Scale= 3/4" = 1'-0" A-301



PANDA EXPRESS, INC.
1683 Walnut Grove Ave.
Rosemead, California
91770
Telephone: 626.799.9898
Facsimile: 626.372.8288

All ideas, designs, arrangement and plans indicated or represented by this drawing are the property of Panda Express Inc. and were created for use on this specific project. None of these ideas, designs, arrangements or plans may be used by or disclosed to any person, firm, or corporation without the written permission of Panda Express Inc.

REVISIONS:

ISSUE DATE:
1st ISSUE FOR BUILDING PERMIT 08-16-18
2nd ISSUE FOR BID 11-29-18

DRAWN BY: RR

PANDA PROJECT # S8-19-D6558
ARCH PROJECT # 1804



315 WALTER ROBERTS ST * FRANKLIN, TN 37064
PHONE (615) 496-8750 * FAX (666) 584-1265
REGISTERED FLORIDA ARCHITECT # AR0015526

PANDA EXPRESS
US 98 and PORTSIDE DRIVE
3868 GULF BREEZE PARKWAY
GULF BREEZE, FL

2200 TRUE - R1 - DAB 12

A-301

WALL SECTIONS

Order Plans @

WWW.LDLINE.COM