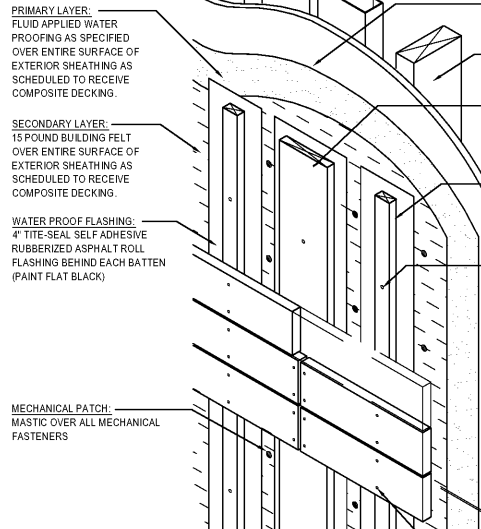
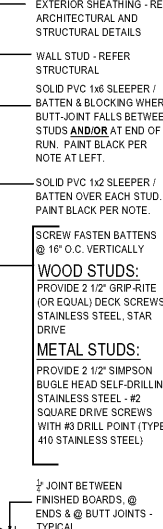


SCREW AND FASTENING DTL.

WATER/AIR BARRIER



CONSTRUCTION



NOTE !!!
ALL SLEEPER / BATTENS AND ALL MATERIALS BEHIND THE COMPOSITE DECKING SHALL BE PAINTED FLAT BLACK PRIOR TO INSTALLING THE COMPOSITE DECKING. USE PAINT SUITABLE FOR THIS APPLICABLE AND COMPATIBLE WITH ALL MATERIALS BEING PAINTED.

SURFACE MOUNTING FASTENING SYSTEM

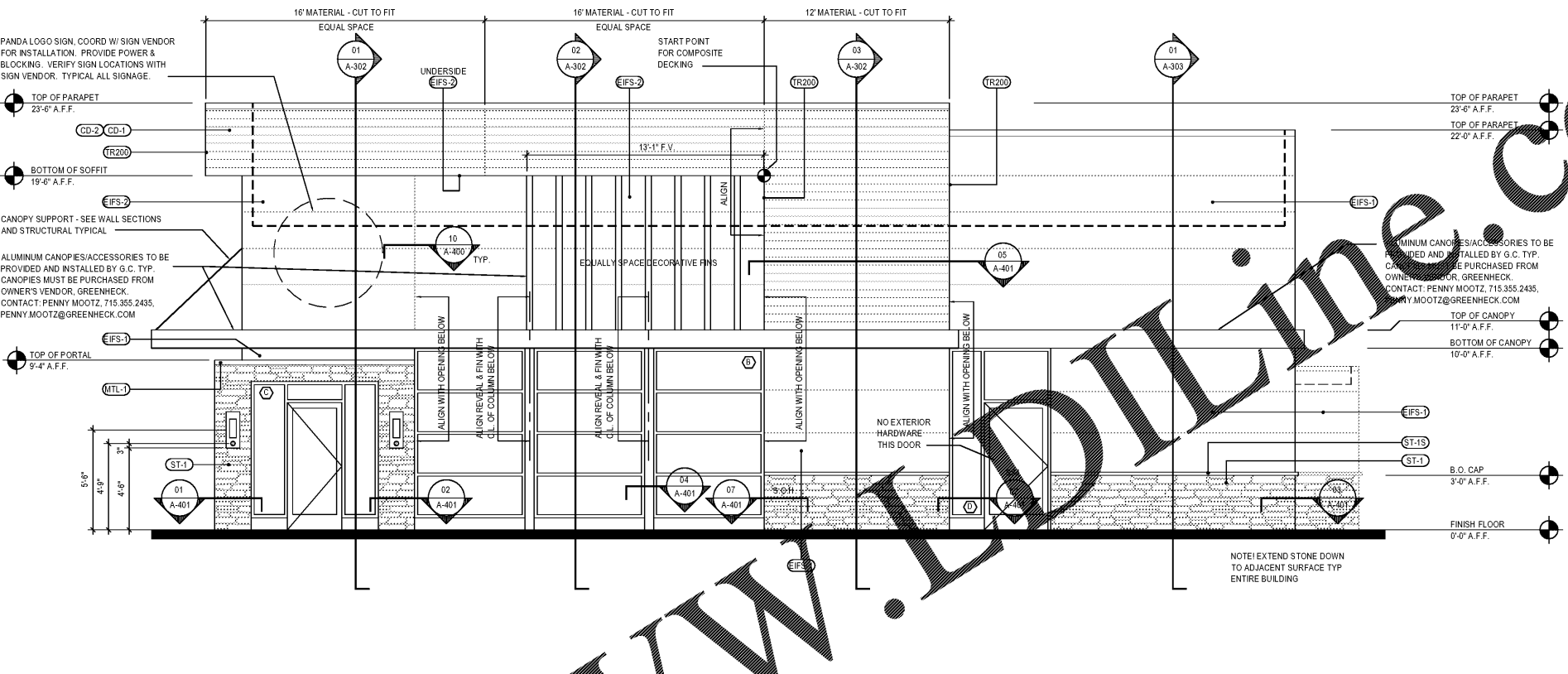
COMPOSITE DECK FASTENING & WATER PROOFING DTLs 3
Scale= 1 1/2" = 1'-0" A-201

NO	MANUFACTURER	MFG#	COLOR	FINISH	NOTES
ES-1	STOTHERM ESSENCE SYSTEM	SW 6148	WOOL SKEN	FINE	BUILDING BODY
ES-2	STOTHERM ESSENCE SYSTEM	SW 7067	CITYSCAPE	FINE	BUILDING BODY
ST-1	CORONADO STONE PRODUCTS	800 SERIES	#2 GREY	SMOOTH	STONE CAP (18" VERT. TO MATCH STONE CAP)
ST-2	CORONADO STONE PRODUCTS	INDUSTRIAL LEDGE	SHALE GREY		ENTRY PORT COUPLER (1" COASTAL) SEE 864.808
CD-1	FIBERON	HORIZON	PE	65% MATERIAL COVERAGE - RANDOM MIX (NON-GROOVE)	CONTACT: PENNY MOOTZ, 715.355.2435, PNNY.MOOTZ@GREENHECK.COM
CD-2	FIBERON	HORIZON	TUDOR BROWN	40% MATERIAL COVERAGE - RANDOM MIX (NON-GROOVE)	CONTACT: PENNY MOOTZ, 715.355.2435, PNNY.MOOTZ@GREENHECK.COM
CD-3	GREENHECK	9/8 CORNER ANGLE	CUSTOM	PRE-FINISHED OUT-CORNER AT ALL FIBERON	
CD-4	EXCEPTIONAL METALS (DURALAST)		"PANDA EXPRESS IRON ORE"	METAL CAP FLASHING	

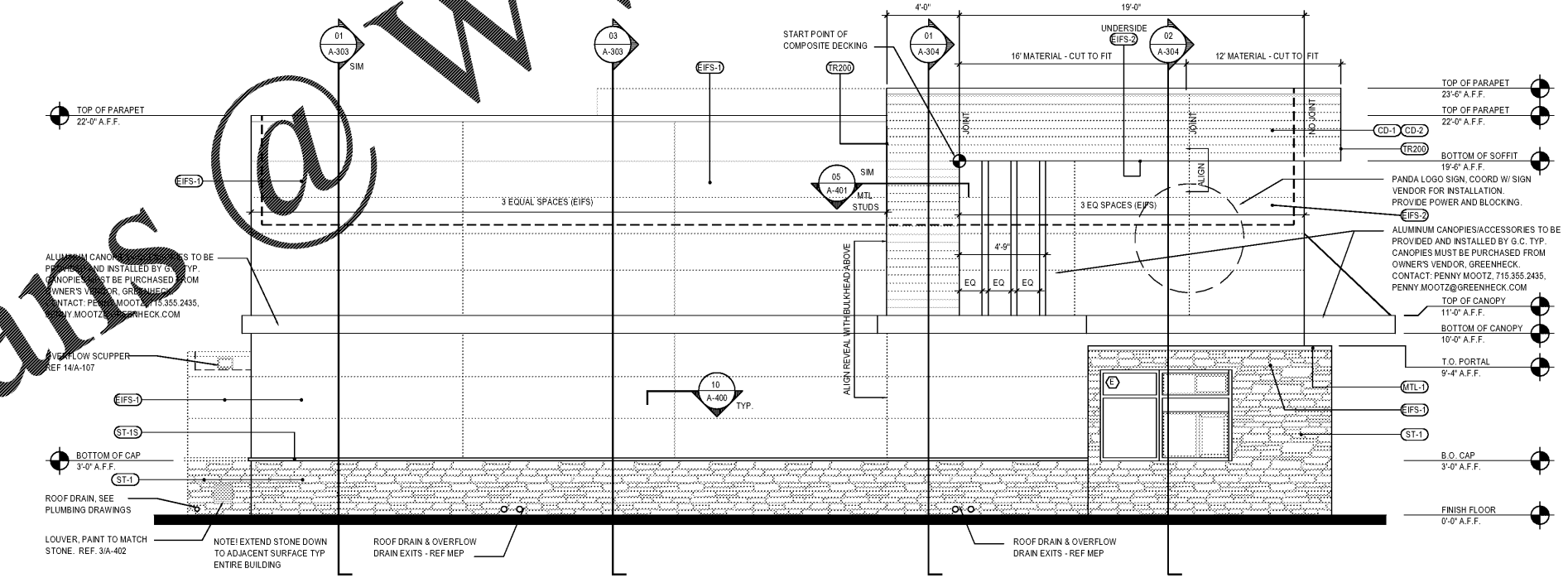
*NOTE: CANOPIES AND ACCESSORIES COME PRE-FINISHED FROM GREENHECK. COLOR "PANDA BRONZE" #SRSL 47301

SYM	WIDTH	HEIGHT	GLASS	FRAME	REMARKS	NOTES
W-1	17'-6"	10'-0"	1" INSULATED GLASS	DARK BRONZE ALUMINUM STOREFRONT	1" INSULATED GLASS, 45° X 2" ANODIZED ALUMINUM FRAME WITH R-10 GLAZING SYSTEM PER NOKA	1. INSULATING GLASS PPG SOLARBAN 80 LOW-E CLEAR OVER CLEAR, WINTER U-0.24, SHGC 0.23 VS TRANS 54% 2. DOORS: FULL GLAZED DOORS WITH "KICK" BASE, COLOR (DARK BRONZE) ANODIZED ALUM FINISH - REFER HARDWARE SCHEDULE 3. WINDOW DIMENSIONS ARE FOR BIDDING PURPOSES ONLY. G.C. TO VERIFY ACTUAL WINDOW DIMENSIONS PRIOR TO FABRICATION/INSTALLATION. 4. GLASS FACADE AND ENTRY DOORS TO BE DESIGNED, DETAIL, FACTORY FABRICATED AND SITE ASSEMBLED AND ERECTED. 5. MANUFACTURER: QUIK-SERV, MODEL SS-403E, 3" WITH TRU-BEAM WITH PHOTO-ELECTRIC BAR FURNISH WITH CHIP-25 HEATED AIR CURTAIN WINDOW SYSTEM SHALL COMPLY WITH APPLICABLE SECTION AND CHAPTER OF BUILDING CODE. 6. TEMPERED GLASS
W-2	19'-3"	10'-0"	1" INSULATED GLASS	DARK BRONZE ALUMINUM STOREFRONT	1" INSULATED GLASS, 45° X 2" ANODIZED ALUMINUM FRAME WITH R-10 GLAZING SYSTEM PER NOKA	
W-3	7'-0"	8'-2"	1" INSULATED GLASS	DARK BRONZE ALUMINUM STOREFRONT	1" INSULATED GLASS, 45° X 2" ANODIZED ALUMINUM FRAME WITH R-10 GLAZING SYSTEM PER NOKA	
W-4	10'-0"	10'-0"	1" INSULATED GLASS	DARK BRONZE ALUMINUM STOREFRONT	1" INSULATED GLASS, 45° X 2" ANODIZED ALUMINUM FRAME WITH R-10 GLAZING SYSTEM PER NOKA	
W-5	59'-12"		TEMPERED GLASS	DARK BRONZE ALUMINUM	QUIK-SERV WITH HEATED AIR CURTAIN, ROUGH OPENING PER 10' x 402 SEE ADDITIONAL NOTE #5 CONTACT WAYNE ARNOLD, 803-388-8307	

WINDOW & EXTERIOR FINISH SCHEDULE 4
Scale= NONE A-201



EAST ELEVATION 2
Scale= 1/4" = 1'-0" A-201



WEST ELEVATION 1
Scale= 1/4" = 1'-0" A-201



PANDA EXPRESS, INC.
1683 Walnut Grove Ave.
Rosemead, California 91770
Telephone: 626.799.9898
Facsimile: 626.372.8288

All ideas, designs, arrangement and plans indicated or represented by this drawing are the property of Panda Express Inc. and were created for use on this specific project. None of these ideas, designs, arrangements or plans may be used by or disclosed to any person, firm, or corporation without the written permission of Panda Express Inc.

REVISIONS:

NO	DESCRIPTION	DATE
1st	ISSUE FOR BUILDING PERMIT	08-16-18
2nd	ISSUE FOR BID	11-29-18

ISSUE DATE:

DRAWN BY: RR

PANDA PROJECT # S8-19-D6558
ARCH PROJECT # 1804

RANDY REYNOLDS
ARCHITECT

315 WALTER ROBERTS ST • FRANKLIN, TN 37064
PHONE (615) 496-8250 • FAX (615) 584-1325
REGISTERED FLORIDA ARCHITECT # AR0015528

PANDA EXPRESS
US 98 and PORTSIDE DRIVE
3868 GULF BREEZE PARKWAY
GULF BREEZE, FL

2200 TRUE - R1 - DAB 12

A-201

EXTERIOR ELEVATIONS