

EXTERIOR FINISH SCHEDULE INSTALLED AND FURNISHED BY: G.C. UNLESS NOTED OTHERWISE

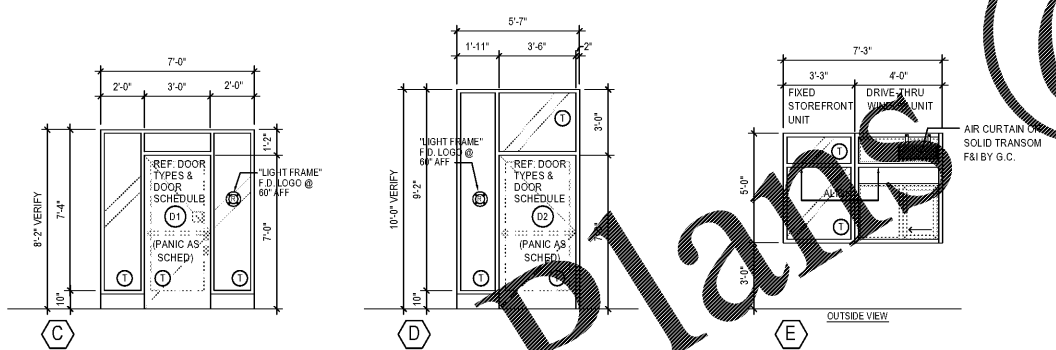
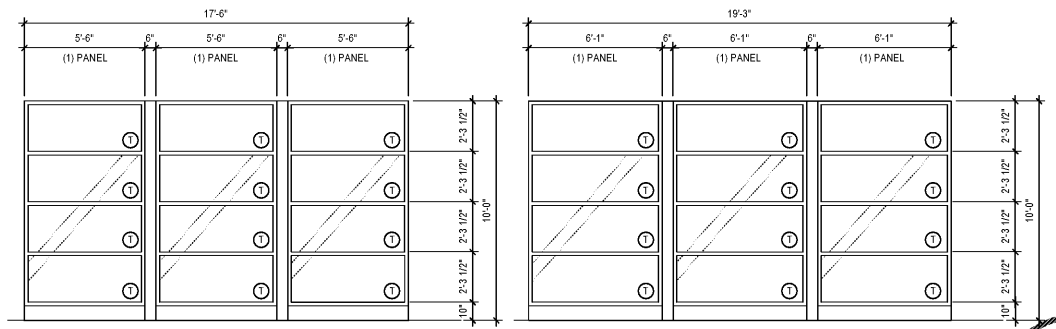
NO	MANUFACTURER	MFG#	COLOR	FINISH	NOTES
(EFS-1)	STO	STOTHERM ESSENCE SYSTEM	SW 6146 WOOL SKEIN	FINE	BUILDING BODY
(EFS-2)	STO	STOTHERM ESSENCE SYSTEM	SW 7067 CITYSCAPE	FINE	BUILDING BODY
(ST-1S)	CORONADO STONE PRODUCTS	900 SERIES	#2 GREY	SMOOTH	STONE CAP (3/8" VERT JOINT - MORTAR TO MATCH STONE CAP)
(ST-1)	CORONADO STONE PRODUCTS	INDUSTRIAL LEDGE	SHALE GREY	-	ENTRY PORTAL & WAINSCOT CONTACT: (EAST COAST) LISA KILGORE: 864-962-1221
(CD-1)	FIBERON	HORIZON	IPE	60% MATERIAL COVERAGE - RANDOM MIX (NON-GROOVE)	COMPOSITE DECKING - CONTACT: BILL ROSS @ 704-756-1980 EMAIL: BillR@fberondecking.com
(CD-2)	FIBERON	HORIZON	TUDOR BROWN	40% MATERIAL COVERAGE - RANDOM MIX (NON-GROOVE)	COMPOSITE DECKING - CONTACT: BILL ROSS @ 704-756-1980 EMAIL: BillR@fberondecking.com
(TR200)	GREENHECK	O/S CORNER ANGLE	CUSTOM	SEE DETAIL 5 / A-401	PRE-FINISHED OUTSIDE CORNER AT ALL FIBERON
(MTL-1)	EXCEPTIONAL METALS (DURALAST)	-	"PANDA EXPRESS IRON ORE"	-	METAL CAP FLASHING

* NOTE: CANOPIES AND ACCESSORIES COME PRE-FINISHED FROM GREENHECK, COLOR "PANDA BRONZE" # SRSL 47307

WINDOW SCHEDULE INSTALLED AND FURNISHED BY: G.C. UNLESS NOTED OTHERWISE

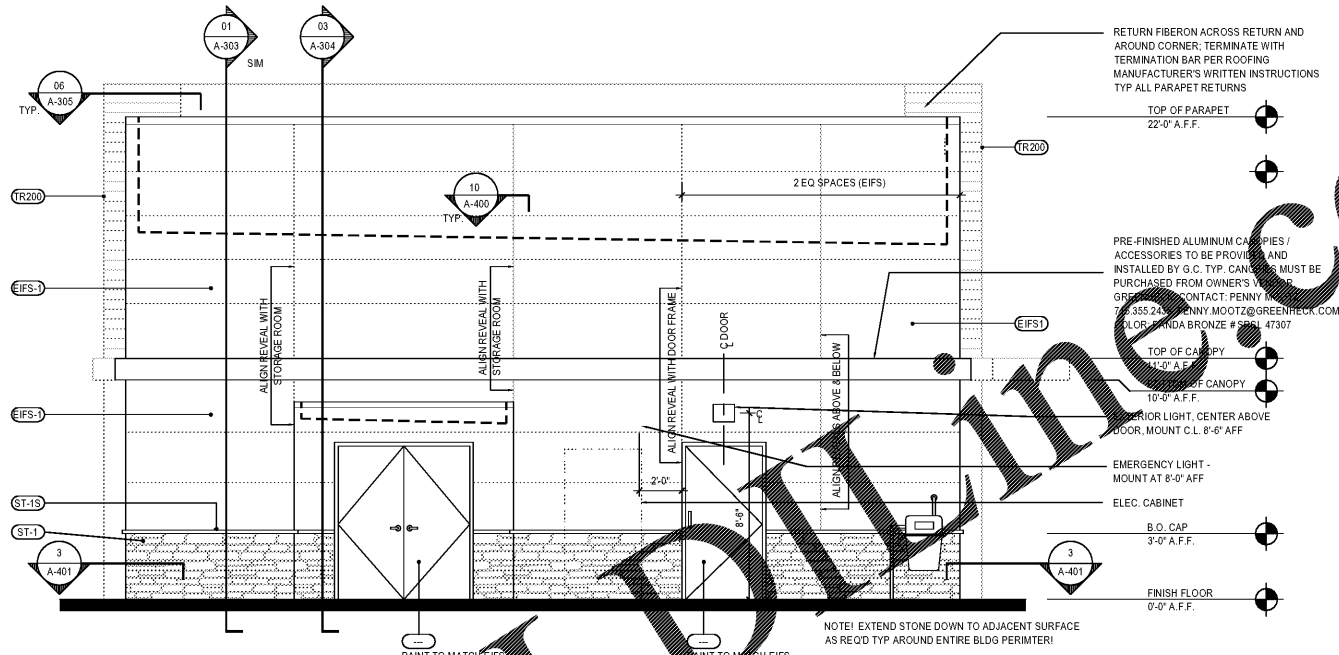
SYM	WIDTH	HEIGHT	GLASS	FRAME	REMARKS
(A)	17'-6"	10'-0"	1" INSULATED GLASS	DARK BRONZE ALUMINUM STOREFRONT	1" INSULATED GLAZING, IN 4.5" X 2" ANODIZED ALUMINUM FRAME KAWNEER TRI-FAB 451T-IR WITH IR GLAZING SYSTEM PER NOA'S
(B)	19'-3"	10'-0"	1" INSULATED GLASS	DARK BRONZE ALUMINUM STOREFRONT	1" INSULATED GLAZING, IN 4.5" X 2" ANODIZED ALUMINUM FRAME KAWNEER TRI-FAB 451T-IR WITH IR GLAZING SYSTEM PER NOA'S
(C)	7'-0"	8'-2"	1" INSULATED GLASS	DARK BRONZE ALUMINUM STOREFRONT	1" INSULATED GLAZING, IN 4.5" X 2" ANODIZED ALUMINUM FRAME KAWNEER TRI-FAB 451T-IR WITH IR GLAZING SYSTEM PER NOA'S
(D)	5'-7"	10'-0"	1" INSULATED GLASS	DARK BRONZE ALUMINUM STOREFRONT	1" INSULATED GLAZING, IN 4.5" X 2" ANODIZED ALUMINUM FRAME KAWNEER TRI-FAB 451T-IR WITH IR GLAZING SYSTEM PER NOA'S
(E)	7'-3 3/4" (TOTAL)	59 1/2"	TEMPERED GLASS	DARK BRONZE ANODIZED ALUMINUM	QUICK-SERV WITH HEATED AIR CURTAIN, ROUGH OPENING PER 10 / A-402. SEE ADDITIONAL NOTE # 5. CONTACT: WAYNE ARNOLD, 800-388-8307

- NOTES
- INSULATING GLASS PPG SOLARBAN 90 LOW E: CLEAR-OVER-CLEAR; WINTER U=0.24, SHGC: 0.23 VIS TRANS: 51%
 - DOORS: FULL GLAZED DOORS W/10" KICK BASE, COLOR DARK BRONZE ANODIZED ALUM. FINISH. REFER HARDWARE SCHEDULE.
 - WINDOW DIMENSIONS ARE FOR BIDDING PURPOSES ONLY. G.C. TO VERIFY ACTUAL WINDOW DIMENSIONS PRIOR TO FABRICATION INSTALLATION. GLASS FACADE AND ENTRY DOORS TO BE DESIGNED, DETAILED, FACTORY FABRICATED AND SITE ASSEMBLED AND ERECTED.
 - MANUFACTURER: QUICK-SERV, MODEL SS-403SE-IP WITH THRU-BEAM WITH PHOTO-ELECTRIC BAR. FURNISH WITH CHIF-25 HEATED AIR CURTAIN.
 - WINDOW SYSTEM SHALL COMPLY WITH APPLICABLE SECTION AND CHAPTER OF BUILDING CODE.
 - TEMPERED GLASS

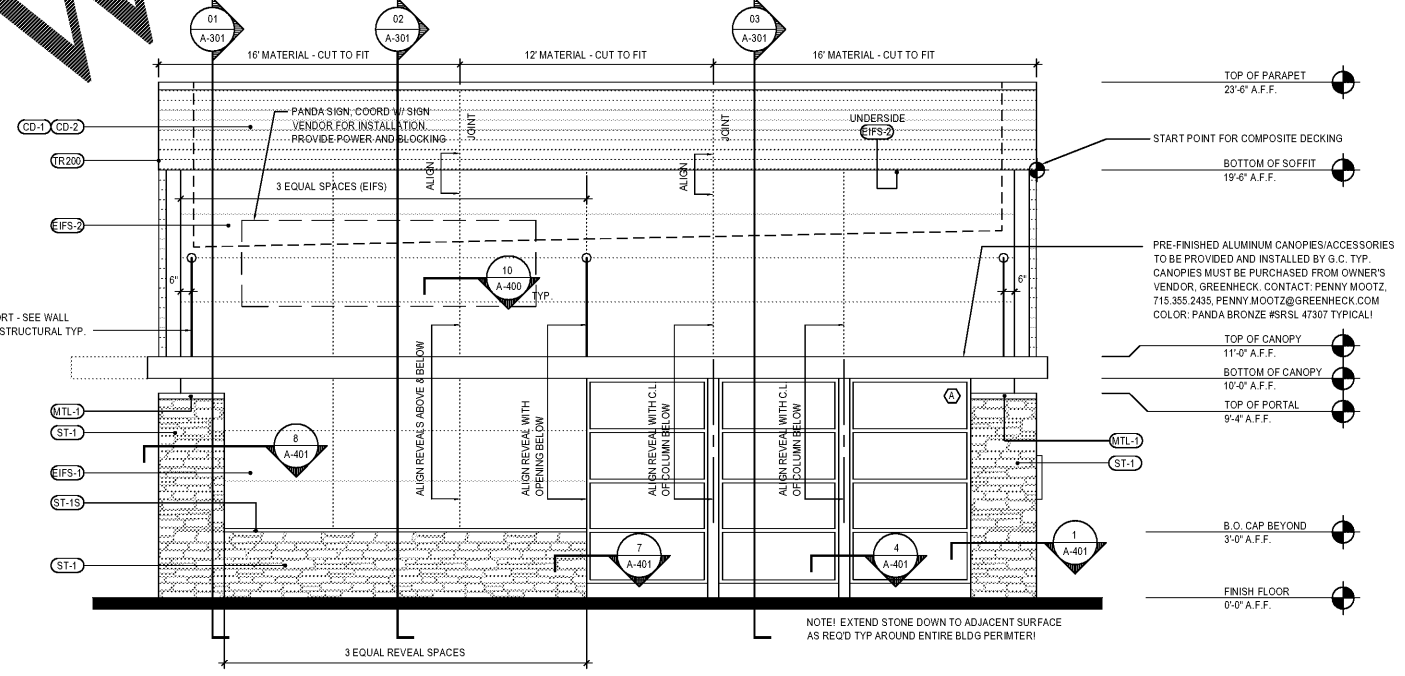


WINDOW AND DOOR ELEVATIONS 3

Scale= NTS A-200



NORTH ELEVATION 2
Scale= 1/4" = 1'-0" A-200



SOUTH ELEVATION 1
Scale= 1/4" = 1'-0" A-200



PANDA EXPRESS, INC.
1683 Walnut Grove Ave.
Rosemead, California 91770
Telephone: 626.799.9898
Facsimile: 626.372.8288

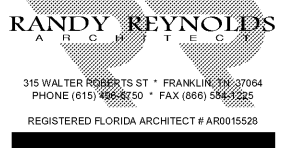
All ideas, designs, arrangement and plans indicated or represented by this drawing are the property of Panda Express Inc. and were created for use on this specific project. None of these ideas, designs, arrangements or plans may be used by or disclosed to any person, firm, or corporation without the written permission of Panda Express Inc.

REVISIONS:

NO	DESCRIPTION	DATE
1st	ISSUE FOR BUILDING PERMIT	08-16-18
2nd	ISSUE FOR BID	11-29-18

ISSUE DATE:
1st ISSUE FOR BUILDING PERMIT 08-16-18
2nd ISSUE FOR BID 11-29-18

DRAWN BY: RR
PANDA PROJECT #: S8-19-D6558
ARCH PROJECT #: 1804



315 WALTER ROBERTS ST • FRANKLIN, TN 37064
PHONE (615) 496-8250 • FAX (615) 584-1225
REGISTERED FLORIDA ARCHITECT # A00015528

PANDA EXPRESS
US 98 and PORTSIDE DRIVE
3868 GULF BREEZE PARKWAY
GULF BREEZE, FL

2200 TRUE - R1 - DAB 12

A-200

EXTERIOR ELEVATIONS

Order Plans @